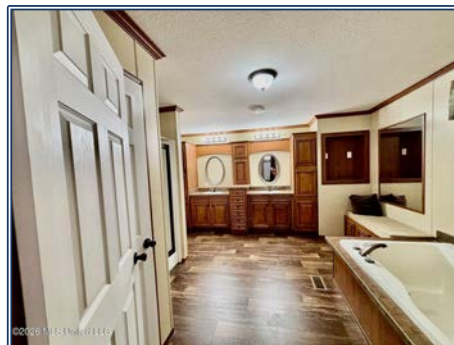




This spacious 2012 double-wide mobile home offers 2,112 square feet of comfortable living space, perfectly situated on a full 1-acre lot in Tylertown, MS, within the desirable Salem School District of Walthall County. Tucked away with a long private driveway, this property provides both privacy and peaceful surroundings, complemented by beautiful views. Inside, you'll find a thoughtfully designed layout featuring a large kitchen with an oversized island and abundant cabinet space--ideal for cooking, entertaining, and everyday living. The home has brand new carpet in bedrooms, adding a fresh and cozy touch. The main bedroom suite is a true retreat, boasting a very large soaking bathtub, a separate shower, and a spacious walk-in closet conveniently located just off the bathroom. Step outside to enjoy the expansive back deck, perfect for relaxing, hosting gatherings, or simply taking in the surroundings full of wildlife. With its generous space, modern features, and tranquil setting, this property offers the perfect blend of comfort and country living.

181 Firetower Road, Tylertown, MS

31.272191, -90.141049 GPS



\$144,500

3 Bed/2 Bath
1.0± Acres
MLS #4146790



Danielle Burnette
dandynburn@gmail.com
Office: (601) 250-0017
Cell: (601) 249-7061
SouthernStatesRealty.com