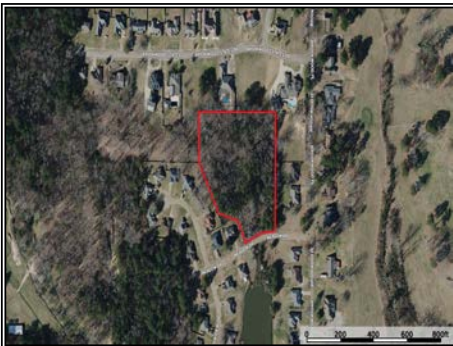




Prime development opportunity in the desirable Brookwood Estates subdivision in Byram, Mississippi! This approximately 4-acre property in Hinds County offers outstanding potential for residential development or a private custom home site. Whether you are a developer looking to build multiple homes or a buyer seeking acreage for a spacious estate near Jackson, this property provides endless possibilities. Conveniently located near shopping, dining, schools, and major highways, it offers the perfect balance of peaceful country living with quick access to city amenities. With limited opportunities available in Brookwood Estates, this land is ideal for new construction, investment, or creating your dream home in one of Byram's sought-after locations. Contact your favorite realtor today for more information on this land for sale in Byram, MS.

Meadow Drive, Byram, MS

32.213931, -90.273789 GPS



**\$59,000**

4.0± Acres  
MLS #4149701



**Trey Meacham**  
meachamandassociatesins@gmail.com  
Office: (601) 250-0017  
Cell: (601) 622-1974  
SouthernStatesRealty.com