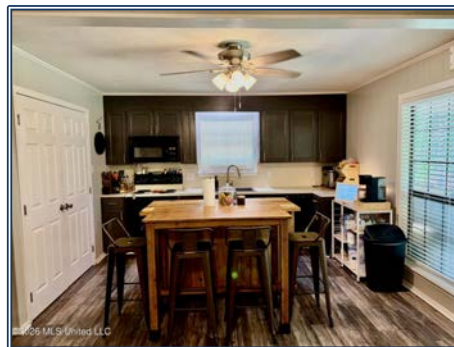




Tucked away on 3.97 acres in Summit, Mississippi, this charming property offers the perfect blend of privacy, space, and versatility—all within the desirable North Pike School District in Pike County. The main home features 2 bedrooms and 1 bathroom across approximately 1,080 square feet, set well off the road with a large, welcoming front yard that enhances its peaceful, secluded feel. A gravel drive leads up to a paved area near the home, adding both convenience and curb appeal. Relax and enjoy the surroundings from the spacious front and back porches, both set on a solid slab foundation—ideal for morning coffee or evening unwinding. Inside, the home has been thoughtfully updated in recent years, including newer flooring and freshly painted kitchen cabinets. The cozy living area has a fireplace with an insert, offering flexibility for both efficient heating or traditional wood-burning use. Adding exceptional value to this property is a separate, newly renovated 1 bed, 1 bath apartment spanning approximately 1,020 square feet. This detached living space features stylish butcher block countertops, a tankless hot water heater, and an efficient split unit for heating and cooling—perfect for guests, rental income, or multi-generational living. With nearly 4 acres of land, modern updates, and a versatile second dwelling, this Summit property offers endless possibilities in a serene country setting.

3115 River Ridge Road, Summit, MS

31.277789, -90.381567 GPS



\$275,500

3 Bed/2 Bath
3.97± Acres
MLS #4148196



Danielle Burnette
dandynburn@gmail.com
Office: (601) 250-0017
Cell: (601) 249-7061
SouthernStatesRealty.com