

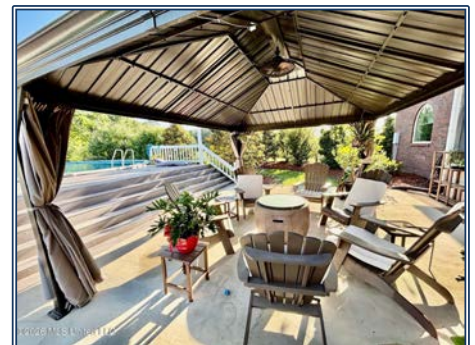
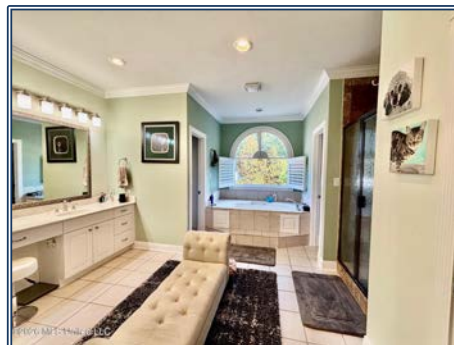


26 MLS United LLC

Welcome to your retreat in the heart of Lawrence County! Nestled on approximately 2 beautifully landscaped acres in Monticello, MS, this spacious 3,200+ sq. ft. home offers the perfect blend of comfort, functionality, and outdoor entertaining. Built in 2000, this well-maintained property features 6 bedrooms with 4 located upstairs and 2 downstairs, along with 3 full bathrooms designed to accommodate a growing family or guests with ease. Inside, you'll find an inviting floor plan with multiple living and working spaces, including two dedicated offices ideal for remote work, hobbies, or study areas. A formal dining room provides the perfect setting for family gatherings and special occasions. The bright sunroom overlooking the backyard creates a peaceful place to relax while enjoying views of the pool and outdoor entertaining area. Step outside to your own backyard oasis featuring an above-ground pool, expansive patio area, and a charming gazebo complete with a ceiling fan—perfect for entertaining year-round. The beautifully landscaped grounds, concrete circle driveway, and whole-house Generac generator add both curb appeal and peace of mind. This exceptional property combines space, privacy, and convenience in a desirable Lawrence County location. Don't miss the opportunity to make this stunning home your own!

95 Pearl View Circle, Monticello, MS

31.575579, -90.105889 GPS



## \$419,500

6 Bed/3 Bath  
2± Acres  
MLS #4149739



**Danielle Burnette**  
dandynburn@gmail.com  
Office: (601) 250-0017  
Cell: (601) 249-7061  
SouthernStatesRealty.com