



**Scott Campbell**  
 scampbellunited@bellsouth.net  
 Office: (601) 250-0017  
 Cell: (601) 248-4595  
 SouthernStatesRealty.com



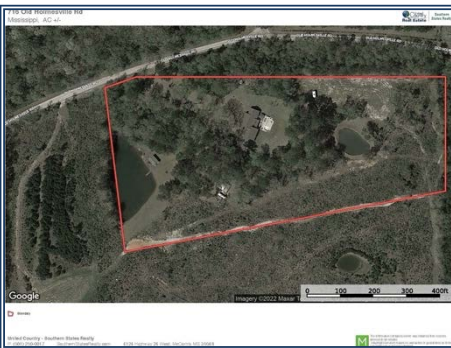
**SOUTHERN  
STATES REALTY**



3 Bed, 2 Bath, 2,200 sqft Country Home on 10 acres of land with 2 ponds, inground pool, barn and brand new insulated ClearSpan metal shop. Home has been completely updated and has brand new AC and heating units, unique concrete countertops, all modern appliances and a man cave. The exterior features a pool/patio area, double garage, 2 ponds, gazebo, deck, and a long asphalt driveway leading up to the house. The property has 10 acres of land with trees and open areas and has plenty of white tail deer and rabbits. This country home and land is located in Southwestern Walthall County approximately halfway between McComb and Tylertown, MS. The pool liner has been recently replaced and the shop is brand new with a large roll up door. Call today to view this home on 10 acres for sale in Walthall County, MS.

**716 Old Holmesville RD, Tylertown, MS**

**31.211693, -90.225398 GPS**



**\$329,500**

**10 Acres  
 MLS #137329  
 UC #23042-37329**

