



**Caleb Breaux**  
 cajunlandservices@gmail.com  
 Office: (601) 250-0017  
 Cell: (985) 209-4125  
 SouthernStatesRealty.com



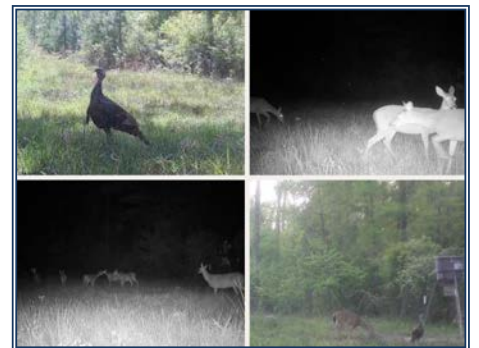
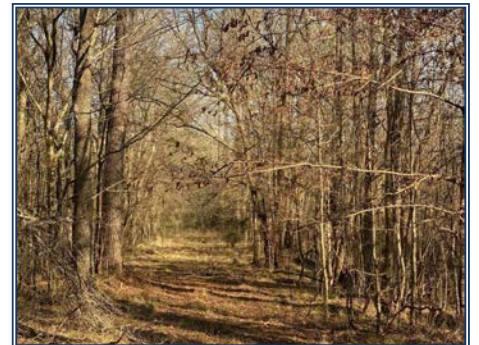
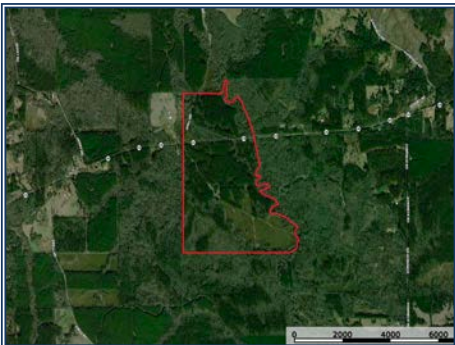
**Southern  
States Realty**



This 398± acre hunting and recreational retreat in Amite County, MS, located between Centreville and Liberty, offers a rare blend of accessibility, natural beauty, and proven wildlife habitat. Featuring scenic frontage along Beaver Creek, the property supports strong populations of whitetail deer, turkey, hogs, waterfowl, and small game, making it ideal for the avid outdoorsman. With frontage on both sides of Highway 48, an established internal road system, multiple food plots, and strategic stand locations, access throughout is seamless. The diverse timber mix of mature pine, hardwood bottoms, and mid-rotation pine provides both immediate enjoyment and long-term investment potential. A high-elevation campsite with power and municipal water is already in place, perfect for a camp, cabin, or future homesite. Conveniently located just one hour from Baton Rouge and two hours from New Orleans, this property offers the perfect balance of seclusion and convenience for a private **retreat, weekend getaway, or legacy investment.**

**Hwy 48, Gloster, MS**

**31.102818, -90.969989 GPS**



**398± Acres**  


---

**\$1,592,000**



**HUNTING  
PROPERTIES**  
 powered by **REALTREE**