



**Slade Priest**  
 sladepriest1@gmail.com  
 Office: (601) 250-0017  
 Cell: (601) 888-0094  
 SouthernStatesRealty.com



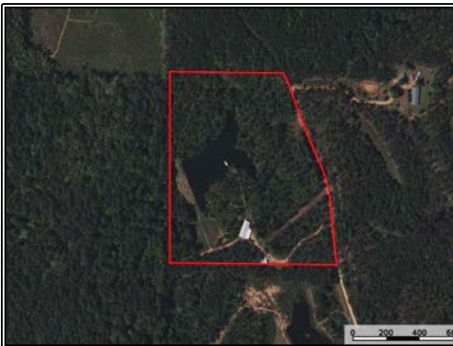
**Southern  
States Realty**



If you've been looking for an affordable hunting getaway that checks every box, this 20± acre tract in Hazelhurst, Mississippi in Copiah County is one you don't want to miss. Adjoining the renowned Homochitto National Forest, this property gives you direct access to thousands of additional acres to hunt, explore, and enjoy—while still having your own private setup to call home. The land itself is laid out perfectly for recreation. A big, scenic pond offers great fishing and a beautiful backdrop right outside your door. Established food plots are already in place, creating ideal stand locations and drawing in the abundant deer and turkey this area is known for. With the National Forest as your neighbor, you'll benefit from expanded habitat and low hunting pressure right at your boundary line. The mobile home is set up for comfort and longevity, complete with a full metal cover roof built over it for added protection from the elements. Whether you're staying for the weekend or the entire season, it provides a solid, comfortable base camp after long days in the woods. A large shop on the property gives you plenty of room to store tractors, side-by-sides, boats, and all your hunting equipment. There's also a dedicated skinning facility, making game processing easy and convenient right on site. Properties adjoining the Homochitto National Forest are hard to find—especially with a pond, food plots, shop, and living quarters already in place. Whether you're looking for a private hunting retreat, family getaway, or an investment in Mississippi recreational land, this Copiah County tract is ready to enjoy from day one.

**2015 Forest Road, Hazelhurst, MS**

**31.733663, -90.695750 GPS**



**\$299,000**

**20± Acres  
3 Bed/2 Bath  
MLS #4139014**



**#HUNTINGLANDMAN**