

Historic South Grand River Gun Club
NW 700th Rd
Urich, MO 64788

\$2,952,922
288± Acres
Henry County



Historic South Grand River Gun Club Urich, MO / Henry County

SUMMARY

Address

NW 700th Rd

City, State Zip

Urich, MO 64788

County

Henry County

Type

Hunting Land, Recreational Land, Riverfront

Latitude / Longitude

38.456163 / -94.055235

Acreage

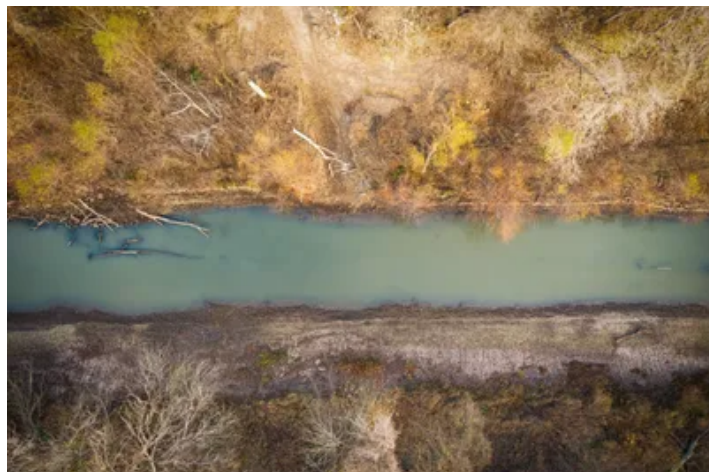
288

Price

\$2,952,922

Property Website

<https://arrowheadlandcompany.com/property/historic-south-grand-river-gun-club/henry/missouri/94119/>



PROPERTY DESCRIPTION

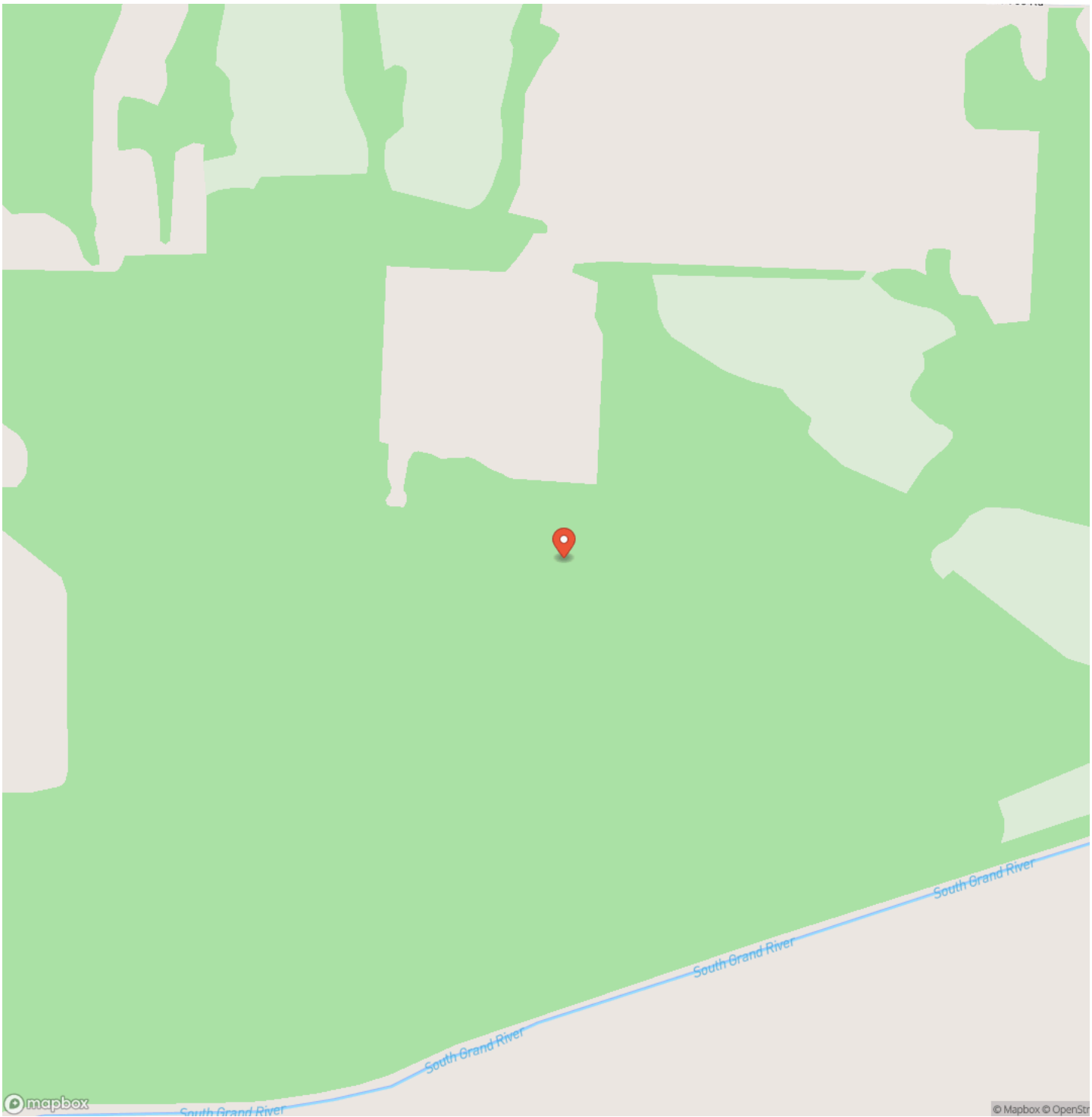
This 288+/- acre tract in Henry County, Missouri is home to the historic Harrisonville Gun Club, a one-of-a-kind property located in the South Grand River bottoms! The club was founded in 1909, and the original off-grid cabin—still standing and used today—was built in the 1920s, giving this place a level of heritage and character that simply can't be replicated. Secluded behind gated access, over a mile off the county road, and surrounded by hardwood timber, this farm has been managed for waterfowl for generations. There are currently five developed wetland pools on the property, each set up with Osceola Machine water control structures for precise drainage and management. Combined, these units provide roughly 35± acres of floodable habitat, giving hunters multiple setups and options as water levels and migration patterns change. Five permanent blinds are in place on the main lake, all of which are pit blinds already brushed and positioned to hunt immediately. A permitted pump ramp and permitted inflow canal is cut directly into the Grand River for easy pumping access. The timber on this tract is impressive, with large mature oak bottoms that hold water during wet cycles. With the natural elevation changes across the property, there is strong potential to develop a green timber reservoir (flooded timber)—something very few properties in this region offer. A high-quality internal trail system makes travel across the farm simple, and a solid access road brings you in smoothly from the entrance. The hunting extends well beyond waterfowl. Several deer blinds are already in place, and many great deer have been taken off the property over the years. This area is also well-known for strong turkey populations and this tract has produced fantastic spring hunting year after year. This is a genuine, multi-species hunting tract with proven waterfowl history and excellent whitetail/turkey hunting. This property is situated between Settles Ford Conservation Area—known to hold large numbers of wintering waterfowl—and Truman Lake. It is surrounded by numerous intensely managed waterfowl properties that consistently produce strong numbers year after year. Simply put, this tract sits in the right neighborhood for waterfowl hunting, benefiting from a proven flyway and a concentration of high-quality duck habitat in every direction. With no conservation easements or development restrictions in place, and positioned above the Truman Flood Lake Easement, this tract offers a rare opportunity to design and add onto what is already here to create a truly world-class waterfowl impound. Its unrestricted status and ideal elevation make it a genuine blank slate for turning big habitat visions into reality. Recent drought conditions have limited the ability to pump the wetland pools, but the landowners are prepared to begin pumping as soon as river levels rise. Located roughly 60 +/- miles southeast of Kansas City, 45 +/- miles southwest of Warrensburg, and 20 +/- miles northwest of Clinton, this property sits in a quiet and well-known waterfowl corridor. In addition, out of state access is made a breeze with being located in close proximity to Clinton Regional Airport and Lawrence Smith Memorial Airport. Between its historic roots, existing wetland infrastructure, and room for further development, Harrisonville Gun Club is a rare opportunity for anyone looking for a legacy hunting property with real history behind it! All showings are by appointment only. If you would like more information or would like to schedule a private viewing please contact Trey Broker at [\(816\) 914-2201](tel:8169142201) or Shea Miller at [\(913\) 208-1364](tel:9132081364).

Disclaimer: The boundary lines shown are approximate and are provided for general reference only. Arrowhead Land Company makes no representations or warranties, express or implied, as to the accuracy, completeness, or reliability of those property lines. Buyers are advised to obtain an independent survey to verify exact property boundaries.

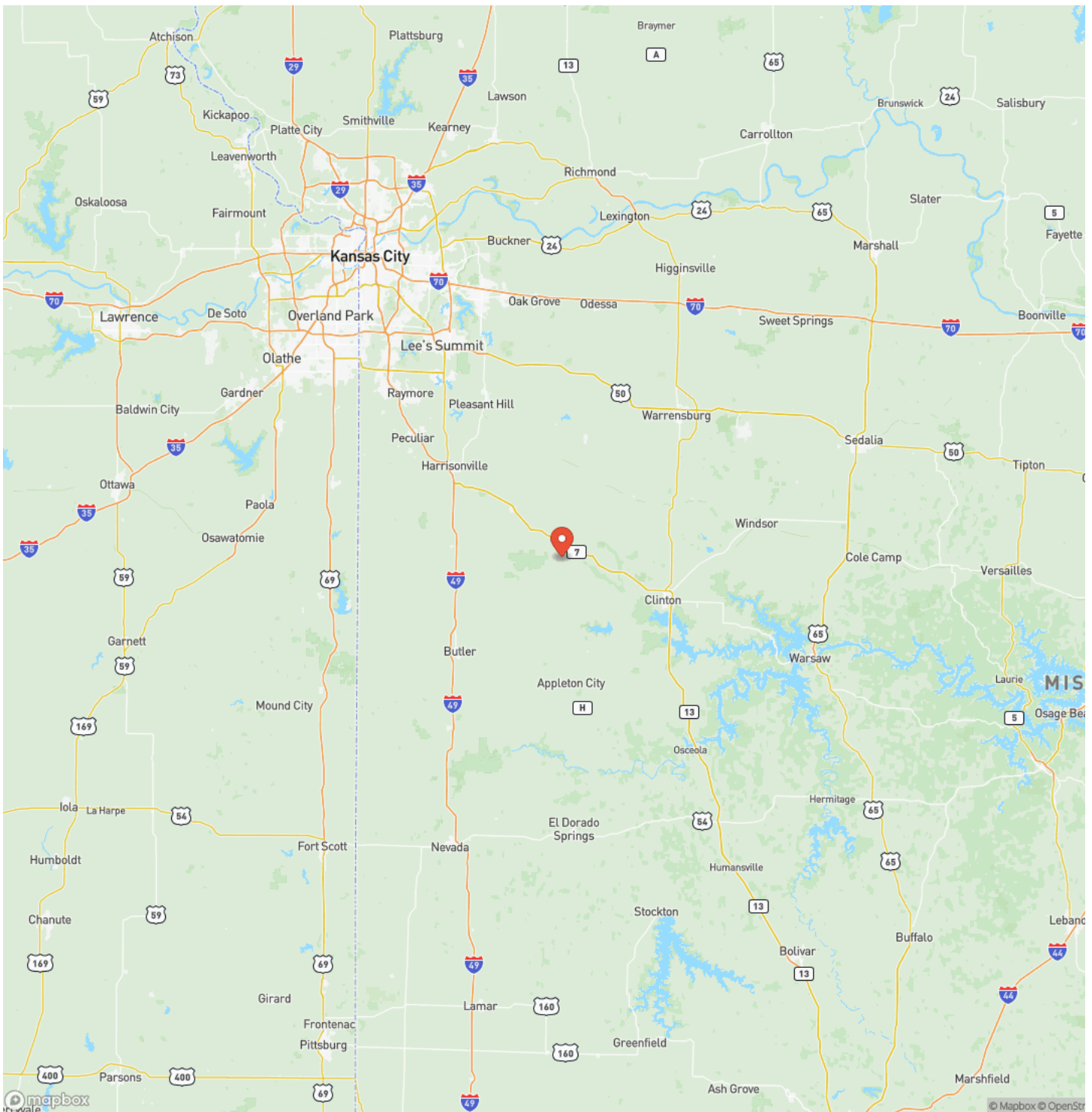
Historic South Grand River Gun Club
Urish, MO / Henry County



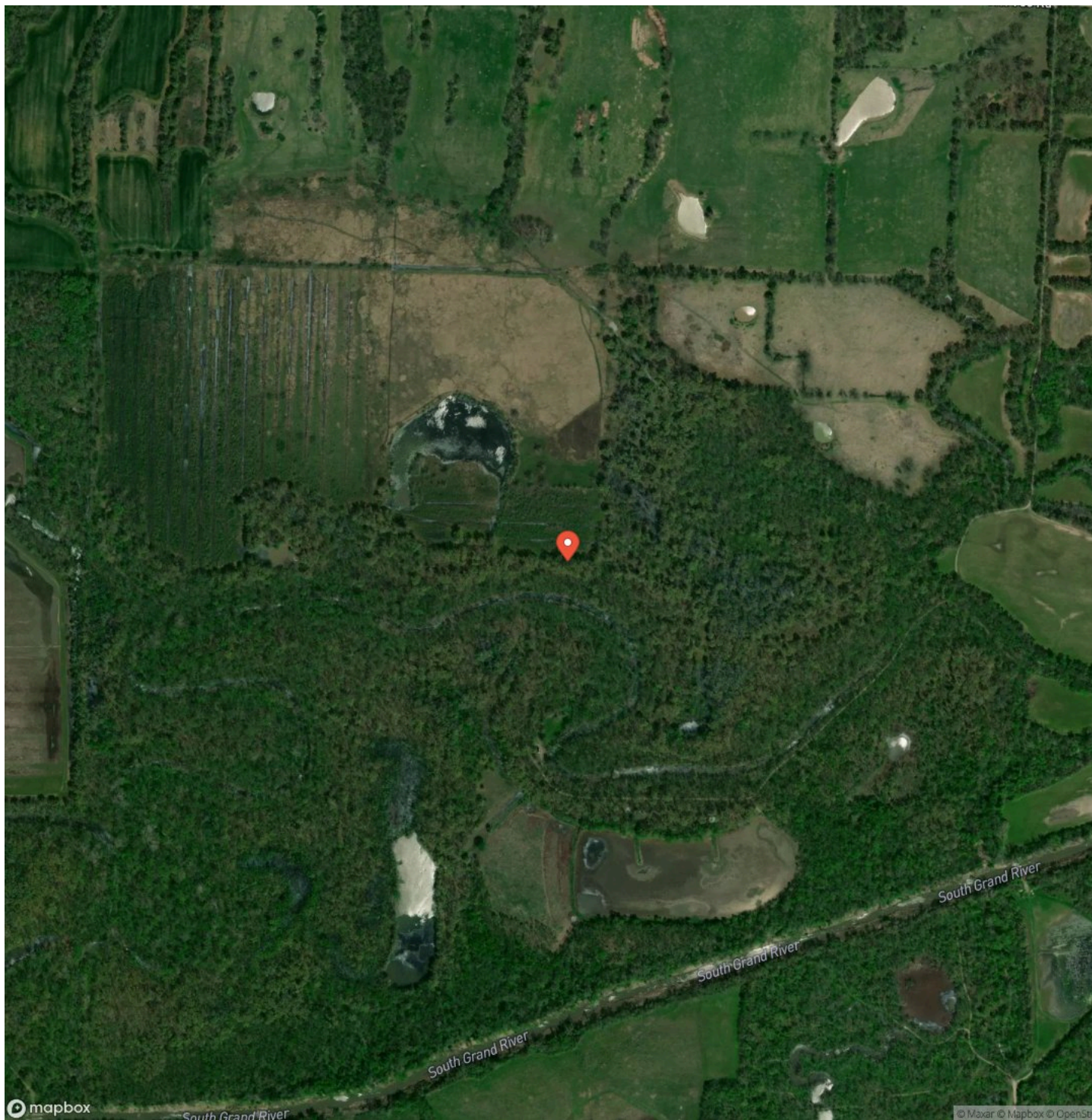
Locator Map



Locator Map



Satellite Map



Historic South Grand River Gun Club

Urich, MO / Henry County

LISTING REPRESENTATIVE

For more information contact:



Representative

Trey Broker

Mobile

(816) 914-2201

Email

trey.broker@arrowheadlandcompany.com

Address

City / State / Zip

Lee's Summit, MO 64063

NOTES

[illegible]

[illegible]

DISCLAIMERS

Information in this brochure is provided solely for information purposes and does not constitute an offer to sell or advertise real estate outside the states in which broker or agent licensed. The information presented has been obtained from sources deemed to be reliable, but is not guaranteed or warranted by the agent, broker, or the sellers of these properties. This offering is subject to errors, omissions, prior sale, price change, correction or withdrawal from the market without notice. All references to age, square footage, income, expenses, acreage, carrying capacity, and land classification, etc. are approximate. Prospective buyers are chargeable with and expected to conduct their own independent investigation of the information and the property and to rely only on those results. Sellers reserve the right to accept or reject any and all offers without liability to any buyer or cooperating broker.

Maps are provided for illustration purposes only, the accuracy is not warranted. Parcels on interactive maps are not adjusted to match aerial backgrounds. This information is for reference purposes only and is not a legal document. Data maps contain errors. The seller and seller's agent are making known to all potential buyers that there may be variations between the location of the existing fence lines and the legal description of the deeded property. Seller and seller's agent make no warranties with regard to the location of the fence lines in relationship to the deeded property lines, nor does the Seller make any warranties or representations with regard to the specific acreage contained within the fenced property lines. Seller is selling the property in an "as is" condition, which includes the location of the fences as they exist. Boundaries shown on the accompanying maps are approximate, based on county parcel data. The maps are not to scale. The accuracy of the maps is not guaranteed. Prospective buyers are encouraged to verify fence lines, deeded property lines and acreages using a licensed surveyor at their own expense.

Arrowhead Land Company
205 E Dewey Ave
Sapulpa, OK 74066
(833) 873-2452
www.arrowheadlandcompany.com

