

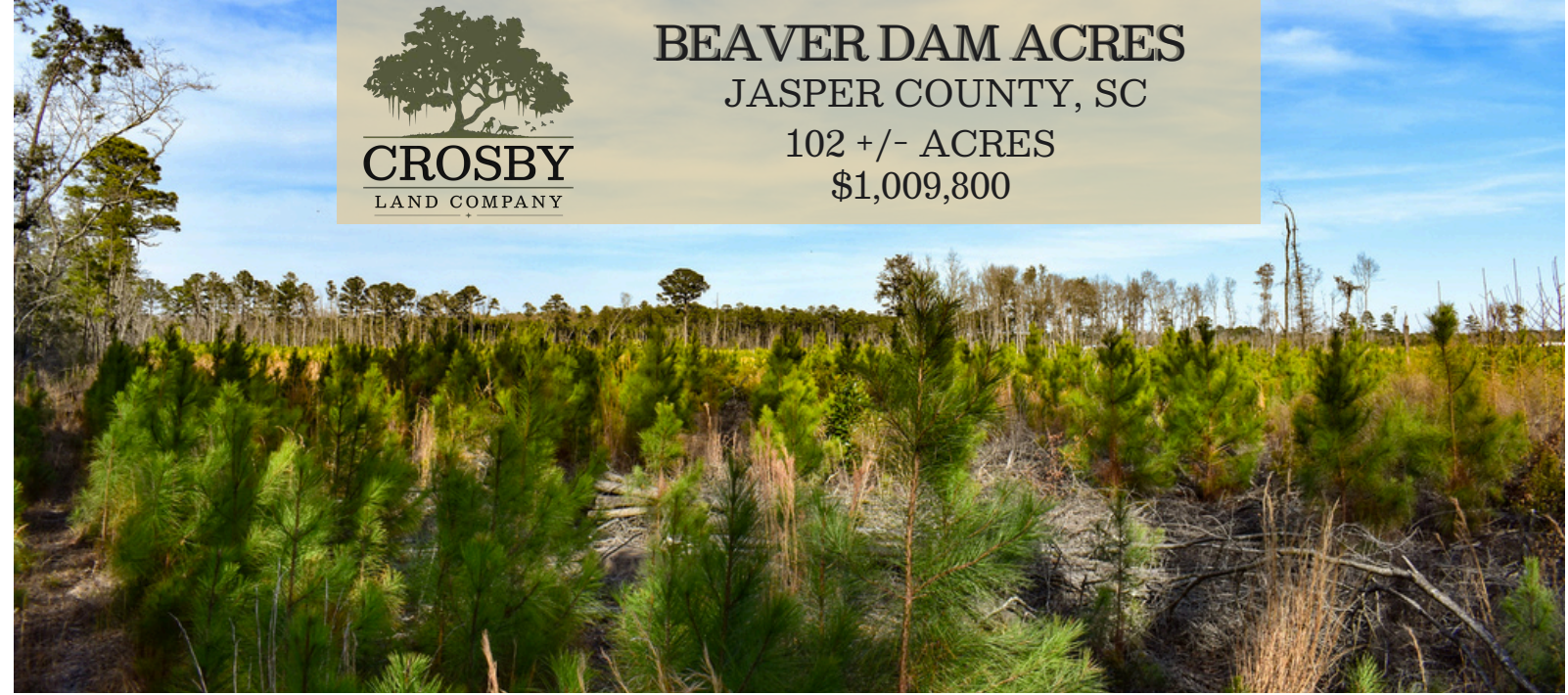


# BEAVER DAM ACRES

JASPER COUNTY, SC

102 +/- ACRES

\$1,009,800



## PROPERTY DESCRIPTION

The Beaver Dam Acres property is a 102 +/- acre property located near Grays in Jasper County, South Carolina, offering an excellent blend of recreation, timber investment, and future development potential. The property features planted pine timber and a high percentage of upland soils, making it well suited for long-term timber management or a private rural retreat. With strong road access from Beaver Dam Road and proximity to Highway 278, the tract is both convenient and secluded. The wooded landscape supports abundant wildlife, including whitetail deer, turkey, dove, quail, and small game, providing outstanding hunting and outdoor recreation opportunities. Whether for hunting, timber investment, or building a private getaway, this tract offers a versatile Lowcountry land opportunity.

## PROPERTY FEATURES:

- Great Access
- Planted Pines
- High Percentage of Upland Soils

## DIRECTIONS:

From Ridgeland take Highway 278 for 13 miles. Turn left on Beaver Dam Road and travel for 2.6 miles. The property will be on the right.

## CONTACT

Alton Smith, SCRF, CF

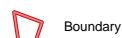
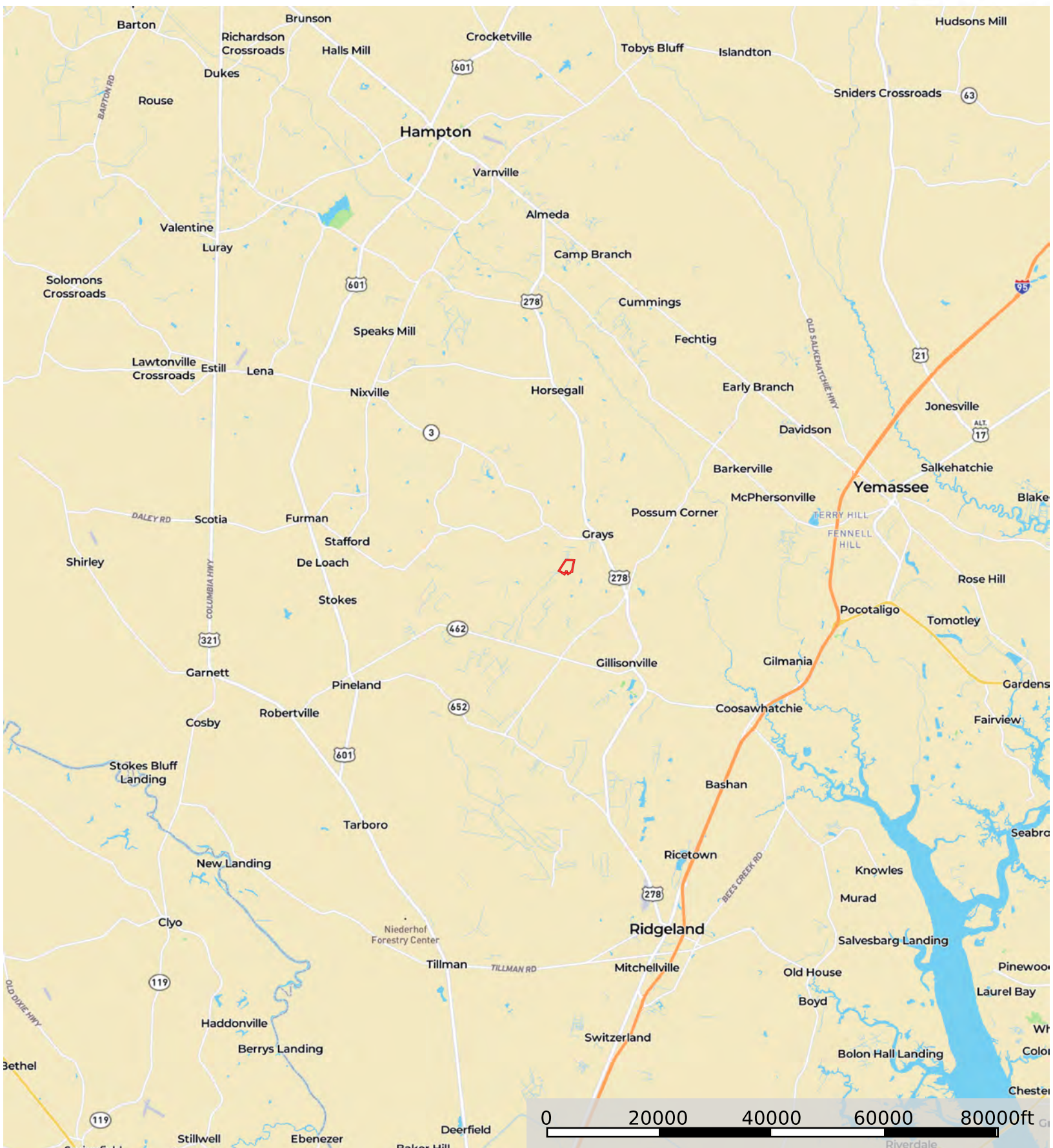
C: 803-942-2530

Email: [smithforestmanagement@yahoo.com](mailto:smithforestmanagement@yahoo.com)

[www.CrosbyLandCo.com](http://www.CrosbyLandCo.com)

# Beaver Dam Acres

Jasper County, South Carolina, 102 AC +/-



Boundary

**Disclaimer:** All persons entering upon the property do so at their own risk, all entrants assume all risks and liabilities and agree to indemnify, defend, and hold harmless Seller, its affiliates, officers, directors, managers, agents, representatives, and employees from any and all claims, demands, causes of action, injuries (including death), or damages arising out of, incidental to, or in any way resulting from inspections or exposure to the property. Property inspections shall be conducted during daylight hours only. Seller and Crosby Land Company, Inc. make no representations or warranties as to the condition of the property, access, usage, acreage, or boundaries. All information provided is assumed accurate but is not guaranteed, and no liability is assumed. This offering is subject to errors, omissions, price changes, or withdrawal without notice.

Todd Crosby

P: 8437825700

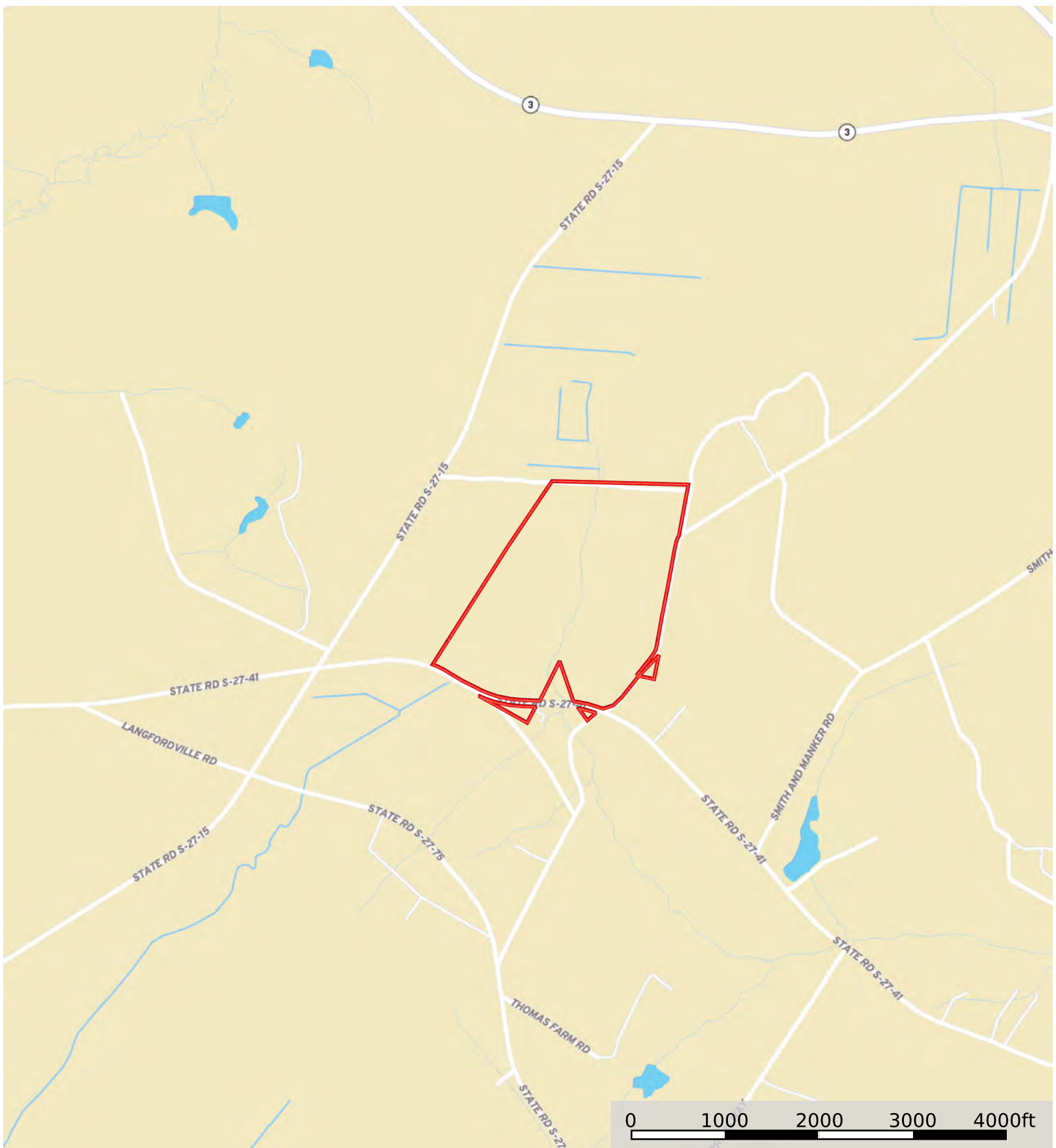
Crosbylandco.com



The information contained herein was obtained from sources deemed to be reliable. Land id® Services makes no warranties or guarantees as to the completeness or accuracy thereof.

# Beaver Dam Acres


Jasper County, South Carolina, 102 AC +/-



 Boundary

**Disclaimer:** All persons entering upon the property do so at their own risk, all entrants assume all risks and liabilities and agree to indemnify, defend, and hold harmless Seller, its affiliates, officers, directors, managers, agents, representatives, and employees from any and all claims, demands, causes of action, injuries (including death), or damages arising out of, incidental to, or in any way resulting from inspections or exposure to the property. Property inspections shall be conducted during daylight hours only. Seller and Crosby Land Company, Inc. make no representations or warranties as to the condition of the property, access, usage, acreage, or boundaries. All information provided is assumed accurate but is not guaranteed, and no liability is assumed. This offering is subject to errors, omissions, price changes, or withdrawal without notice.

Todd Crosby  
P: 8437825700      Crosbylandco.com

 The information contained herein was obtained from sources deemed to be reliable. Land id® Services makes no warranties or guarantees as to the completeness or accuracy thereof.



 Boundary

**Disclaimer:** All persons entering upon the property do so at their own risk, all entrants assume all risks and liabilities and agree to indemnify, defend, and hold harmless Seller, its affiliates, officers, directors, managers, agents, representatives, and employees from any and all claims, demands, causes of action, injuries (including death), or damages arising out of, incidental to, or in any way resulting from inspections or exposure to the property. Property inspections shall be conducted during daylight hours only. Seller and Crosby Land Company, Inc. make no representations or warranties as to the condition of the property, access, usage, acreage, or boundaries. All information provided is assumed accurate but is not guaranteed, and no liability is assumed. This offering is subject to errors, omissions, price changes, or withdrawal without notice.