



**BLADEN 203**  
BLADEN COUNTY, NC  
81 +/- ACRES  
\$215,519



## PROPERTY DESCRIPTION

Bladen 203 is an excellent recreational and timberland investment property. Located approximately 5 miles southwest of Garland and 17 miles northeast of Elizabethtown in northeastern Bladen County, NC. The property contains merchantable timber value with several age classes of planted pines and natural mixed pine and hardwood timber areas. The property boasts exceptional access to the South River with plentiful recreational opportunities, including fishing, canoeing, kayaking, and camping. Additionally, the upland areas offer excellent hunting and timber investment opportunities.

## PROPERTY FEATURES:

- River Access
- Road Frontage
- Trails and Roads
- Merchantable Timber
- Potential Building Sites

## DIRECTIONS:

From Garland, take US Highway 701 south, approximately 3.1 miles to NC Highway 210. Turn left on NC Highway 210, and the access to the property will be on your left about 1.7 miles from the intersection of US Highway 701 and NC Highway 210. You can also copy and paste the following coordinates into your mobile navigation application: 34.732542, -78.402879.

## CONTACT

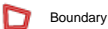
Philip Mead

O: 843.782.5700 - M: 336.653.8839

Email: [philipmead@crosbylandco.com](mailto:philipmead@crosbylandco.com)

[www.CrosbyLandCo.com](http://www.CrosbyLandCo.com)





Boundary

Disclaimer: All information provided is assumed accurate and correct but no assumptions of liability are intended. Neither the seller nor the agent of the seller represent the accuracy of the information provided. No representations or warranties are expressed or implied as to the property, its condition, usage, acreage, or boundaries. This offering is subject to errors and omissions as well as changes including price or withdrawal without notice.

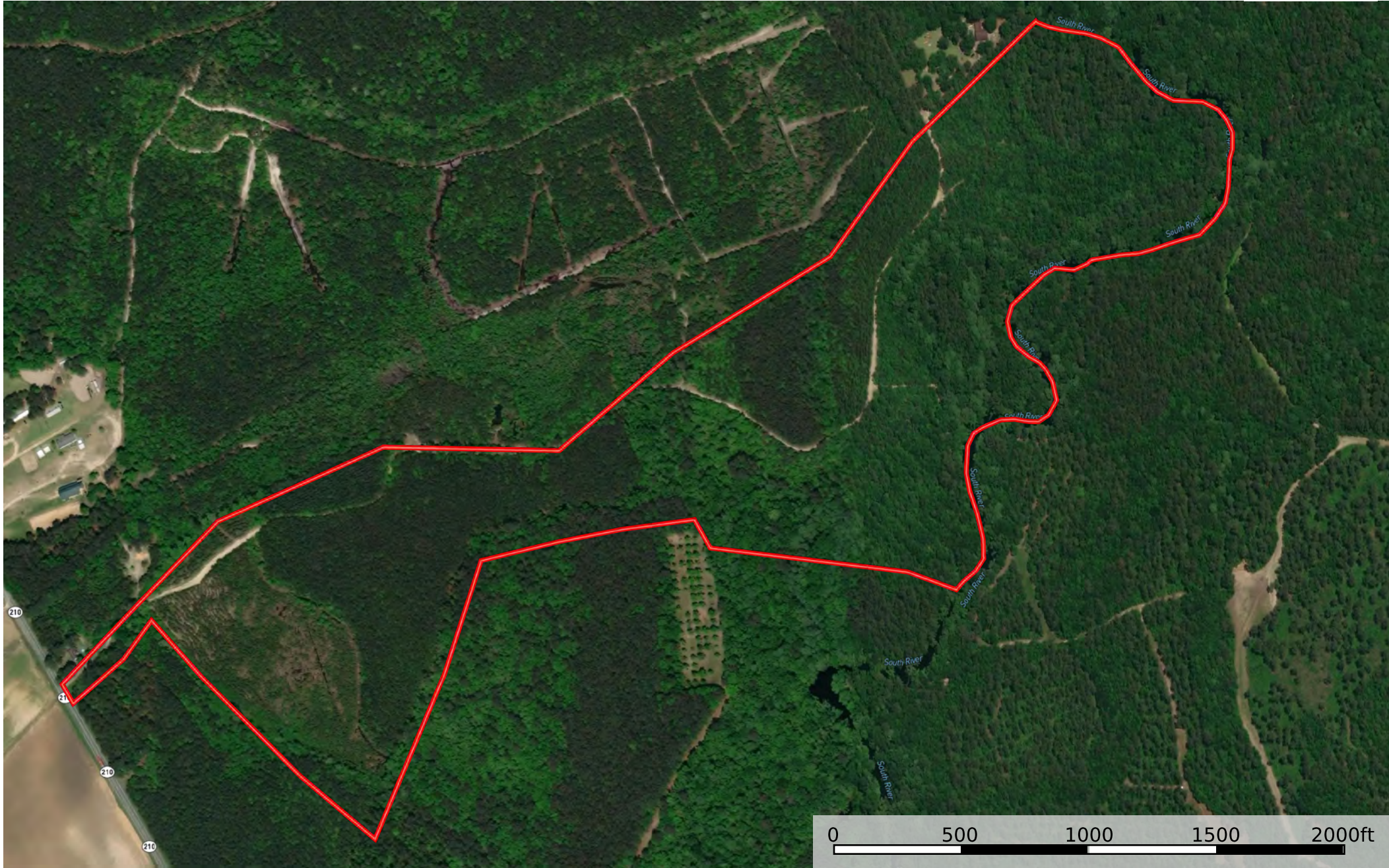


Boundary

Disclaimer: All information provided is assumed accurate and correct but no assumptions of liability are intended. Neither the seller nor the agent of the seller represent the accuracy of the information provided. No representations or warranties are expressed or implied as to the property, its condition, usage, acreage, or boundaries. This offering is subject to errors and omissions as well as changes including price or withdrawal without notice.

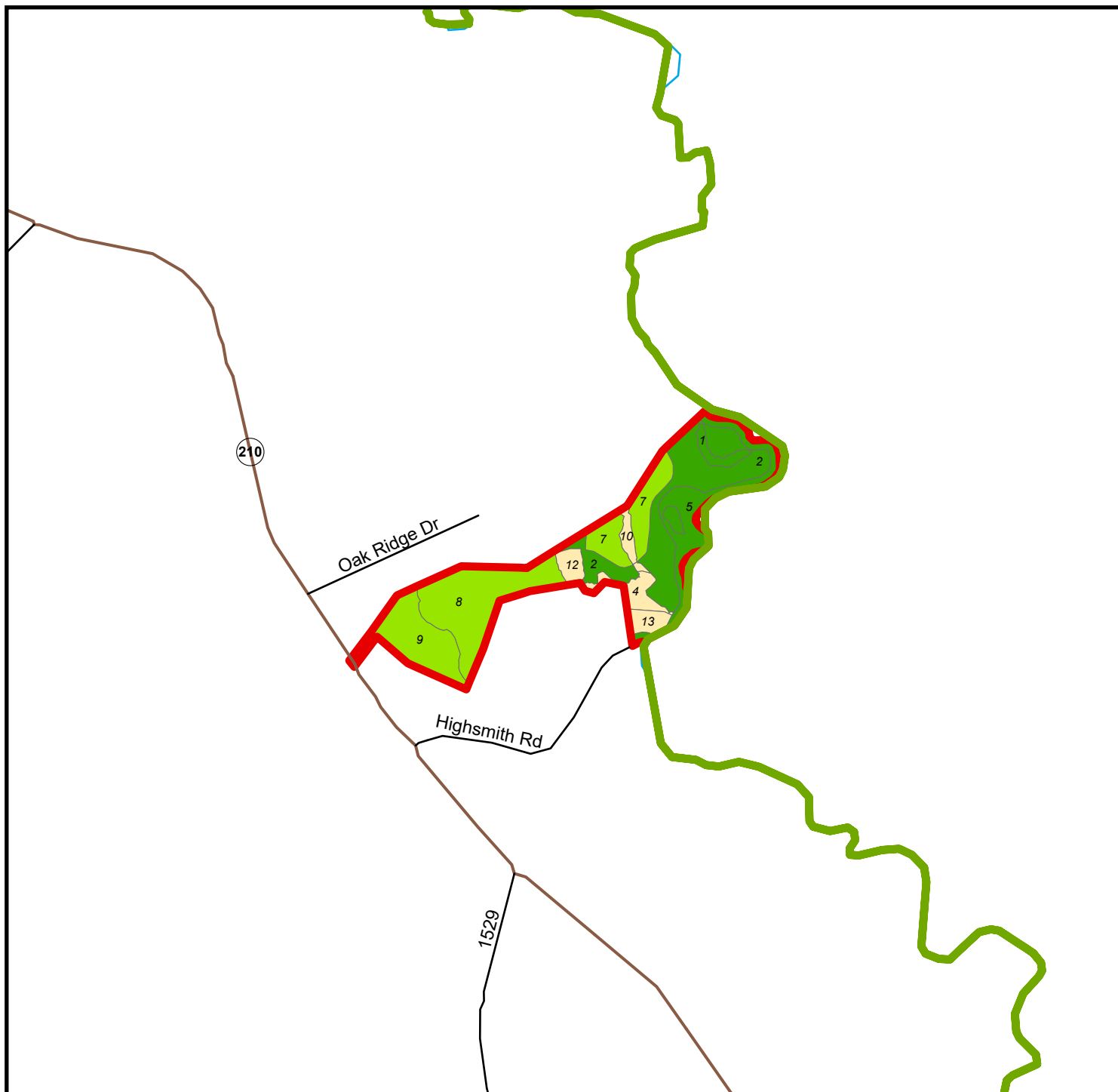




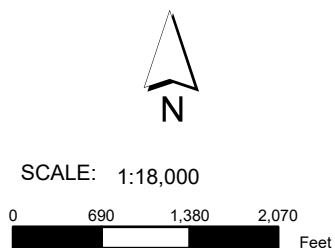
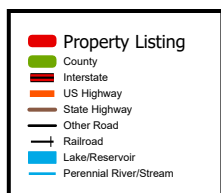


 Boundary

Disclaimer: All information provided is assumed accurate and correct but no assumptions of liability are intended. Neither the seller nor the agent of the seller represent the accuracy of the information provided. No representations or warranties are expressed or implied as to the property, its condition, usage, acreage, or boundaries. This offering is subject to errors and omissions as well as changes including price or withdrawal without notice.



**Bladen 203**  
Bladen County, NC - approx. 81.3 acres +/-



Stand #	Cover Type	Age	Acres
NP	Non Productive	NA	0.7
1	Pine	69	1.7
2	Pine	19	20.2
3	Pine	47	0.8
4	Hardwood	69	3.3
5	Pine	74	11.6
7	Pine Plantation >= 12 yr20		8.6
8	Pine Plantation >= 12 yr21		18.1
9	Pine Plantation >= 12 yr14		10.8
10	Hardwood	69	1.3
11	Hardwood	69	0.2
12	Hardwood	69	1.8
13	Hardwood	69	2.2

*Smaller stands have been excluded to fit in the allowable space*

The property depicted on this map has not been surveyed. The acreage is an estimate based upon GIS data. The volume information in this report is based on current information in the seller's inventory system. The information is subject to change due to harvest activities and/or updates resulting from routine maintenance of the inventory system. Neither the owner nor its officers, directors, employees or agents represent or warrant the accuracy or completeness of the ownership acreage, the cover type acreage, timber inventory species, grade or volumes, legal or practical access to the property, or operability.

5/30/2024