



## WITTEE BRANCH #2

WILLIAMSBURG COUNTY, SC

53+/- ACRES

\$212,000



### PROPERTY DESCRIPTION

The Wittee Branch #2 tract is located just 3 miles from the Wee Tee WMA, and only 47 miles from Mount Pleasant, SC.

The property is suitable for multiple applications, including permanent residence, hunting pursuits, and potential timber revenue. The property consists of 77% upland pine and 23% bottomland.

This excellent recreational tract is located in a game-rich area known for quality deer and incredible populations of wild turkeys. The property will surely reap the benefits of having good neighbors and diverse habitat. A few of the surrounding properties include Wee Tee Plantation, Knollwood, and Quarry Lake Plantation.

This excellent recreational tract is located in a game-rich area known for quality deer and incredible populations of wild turkeys. The property will surely reap the benefits of having good neighbors and diverse habitat. A few of the surrounding properties include Wee Tee Plantation, Knollwood, and Quarry Lake Plantation

### PROPERTY FEATURES:

- Paved road frontage
- Endless Recreational Opportunities

### DIRECTIONS:

From Andrews take SC-41 for 8.8 miles then turn right onto Santee Road. Continue straight for 6.4 miles and the property will be on the right.

### CONTACT

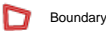
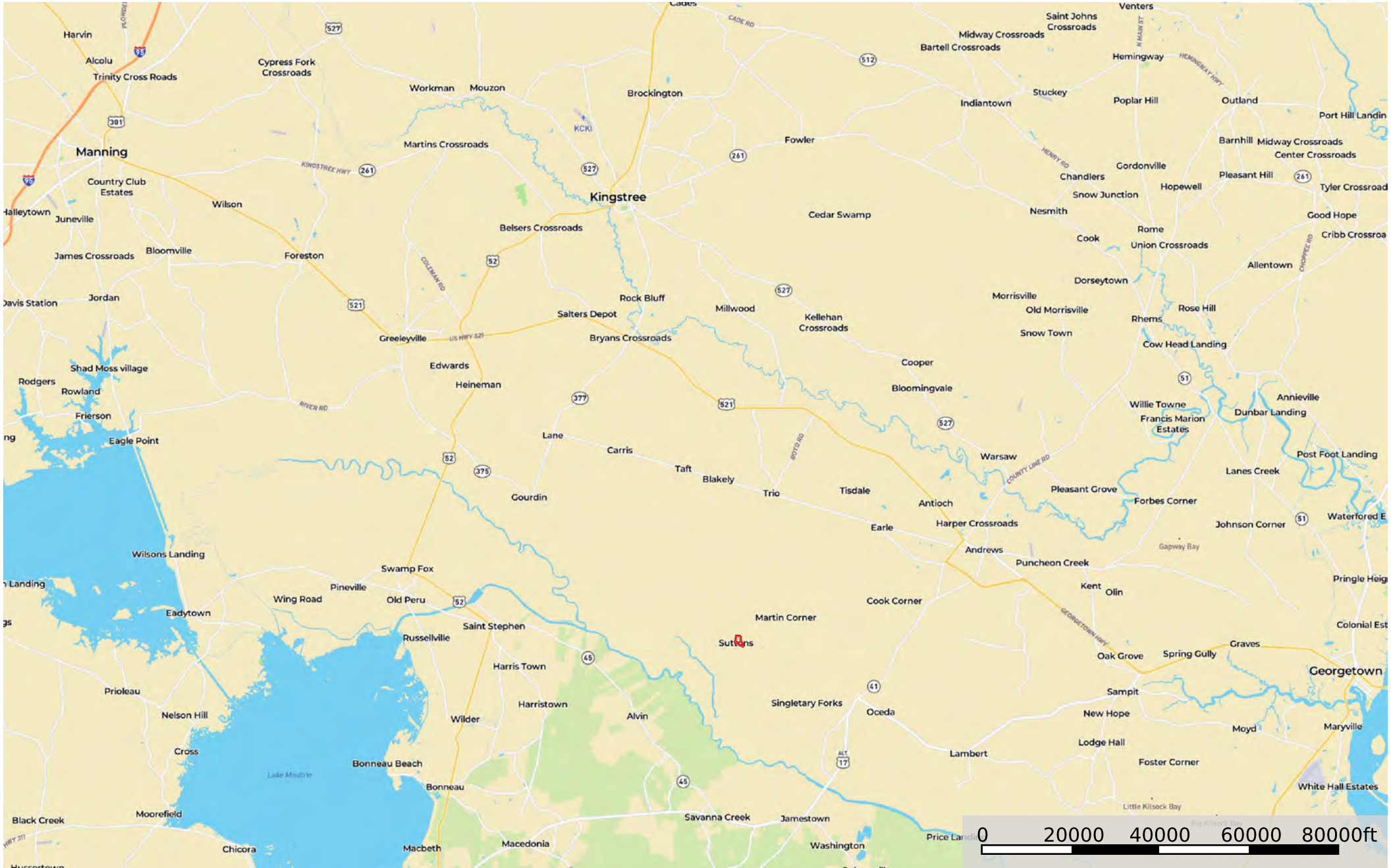
Jared Griffith

O: 843-782-5700 ~ M: 864-314-1801

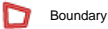
Email: [jaredgriffith@crosbylandco.com](mailto:jaredgriffith@crosbylandco.com)

[www.CrosbyLandCo.com](http://www.CrosbyLandCo.com)

Wittee Branch #2  
Williamsburg County, South Carolina, 53 AC +/-

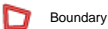
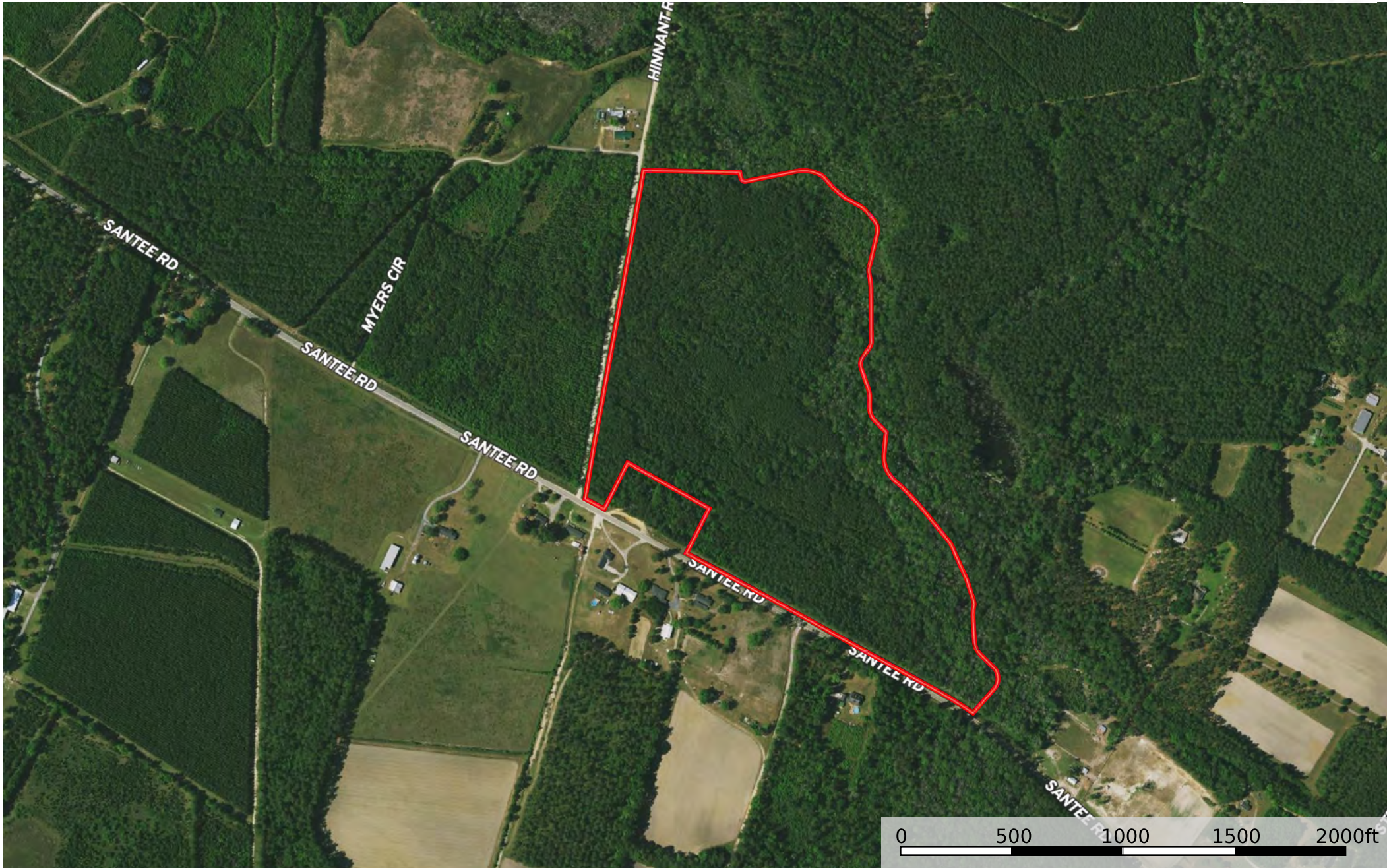


**Disclaimer:** All information provided is assumed accurate and correct but no assumptions of liability are intended. Neither the seller nor the agent of the seller represent the accuracy of the information provided. No representations or warranties are expressed or implied as to the property, its condition, usage, acreage, or boundaries. This offering is subject to errors and omissions as well as changes including price or withdrawal without notice.



**Disclaimer:** All information provided is assumed accurate and correct but no assumptions of liability are intended. Neither the seller nor the agent of the seller represent the accuracy of the information provided. No representations or warranties are expressed or implied as to the property, its condition, usage, acreage, or boundaries. This offering is subject to errors and omissions as well as changes including price or withdrawal without notice.





Boundary

**Disclaimer:** All information provided is assumed accurate and correct but no assumptions of liability are intended. Neither the seller nor the agent of the seller represent the accuracy of the information provided. No representations or warranties are expressed or implied as to the property, its condition, usage, acreage, or boundaries. This offering is subject to errors and omissions as well as changes including price or withdrawal without notice.

