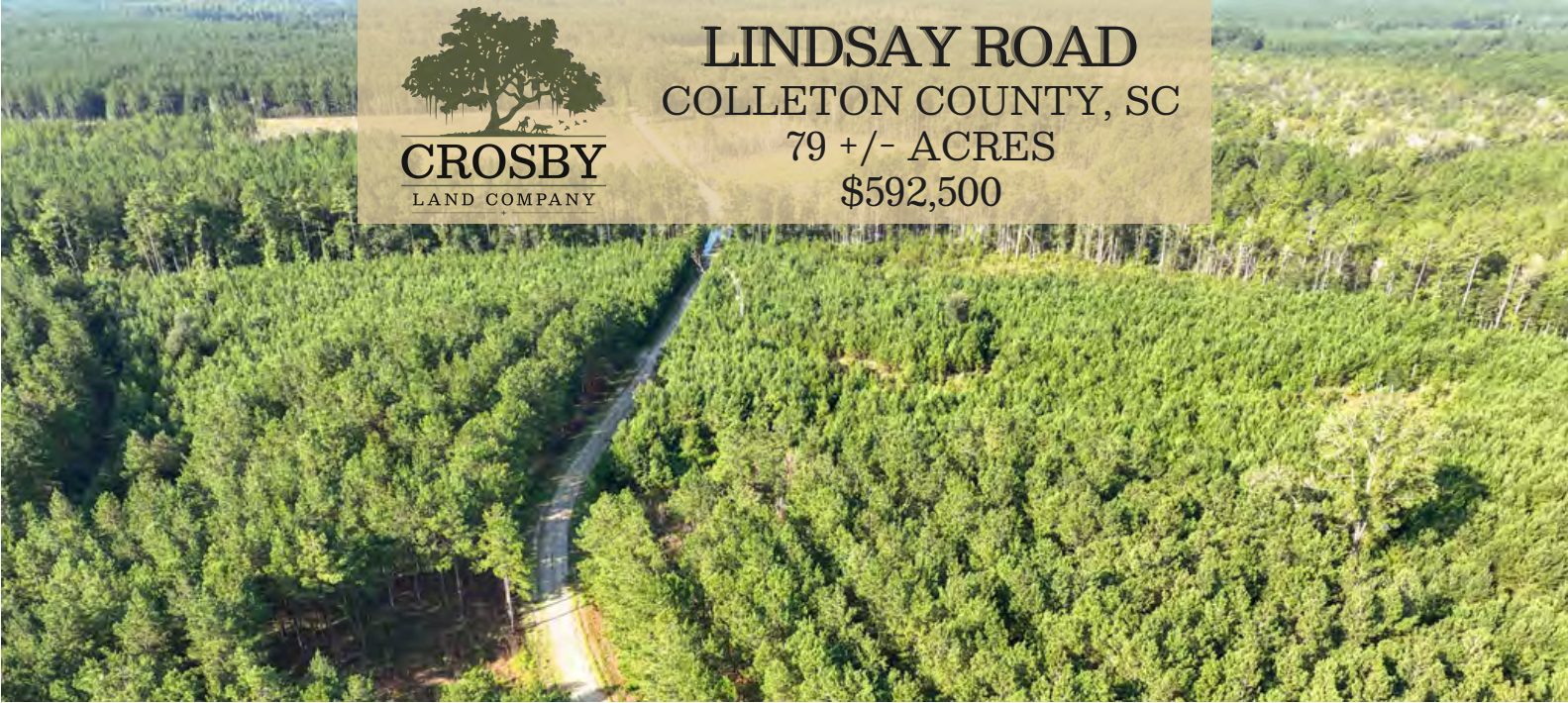




LINDSAY ROAD

COLLETON COUNTY, SC

79 +/- ACRES
\$592,500



PROPERTY DESCRIPTION

Located just 10 miles north of Walterboro, South Carolina, this 79± acre tract offers an exceptional investment opportunity in a quiet, rural setting. Accessible via Lindsay Road, a well-maintained gravel road managed by the county, the property provides reliable access to all areas of the land.

This is a raw timber tract featuring an internal road system and a strong history of professional forest management. The land includes two distinct age classes of planted pines, with approximately 14± acres of 20-year-old pine in excellent growing condition, offering immediate potential for timber revenue.

Whether you're seeking an income-producing timber investment, a private recreational retreat, or a peaceful site for a future residence, this versatile property offers a range of possibilities in a serene Lowcountry landscape.

PROPERTY FEATURES:

- Food Plot
- Planted Pine
- Internal Road System

DIRECTIONS:

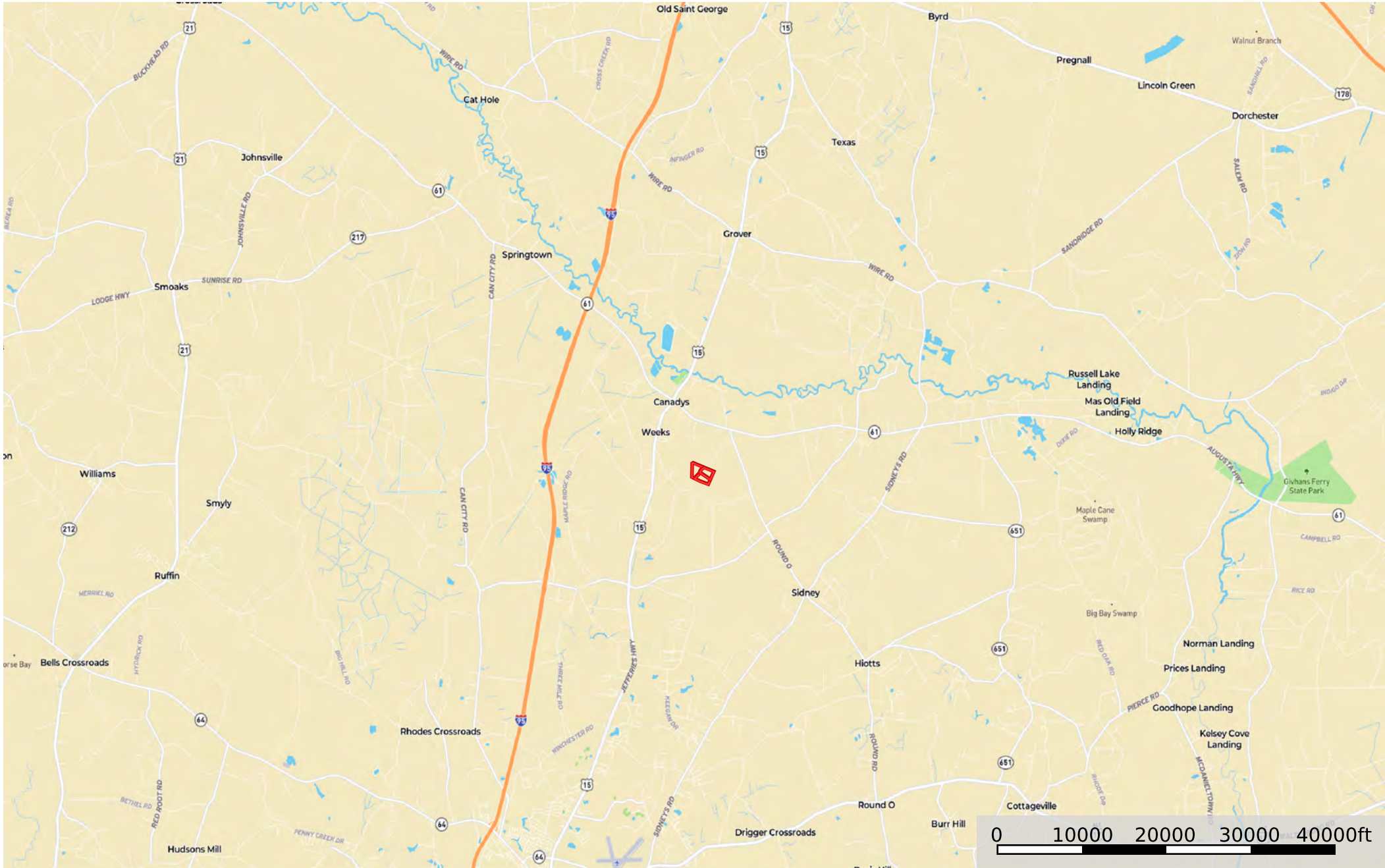
From Walterboro, travel north on US-15 for 9 miles. Turn right onto Hiotts Pond Road and travel for 1 mile. Turn left onto Lindsay Road, and the property will be on the left and right sides of the road within .5 miles.

CONTACT

Alton Smith, SCRF, CF
C: 803-942-2530

Email: smithforestmanagement@yahoo.com
www.CrosbyLandCo.com


Lindsay Road
Colleton County, South Carolina, 79 AC +/-



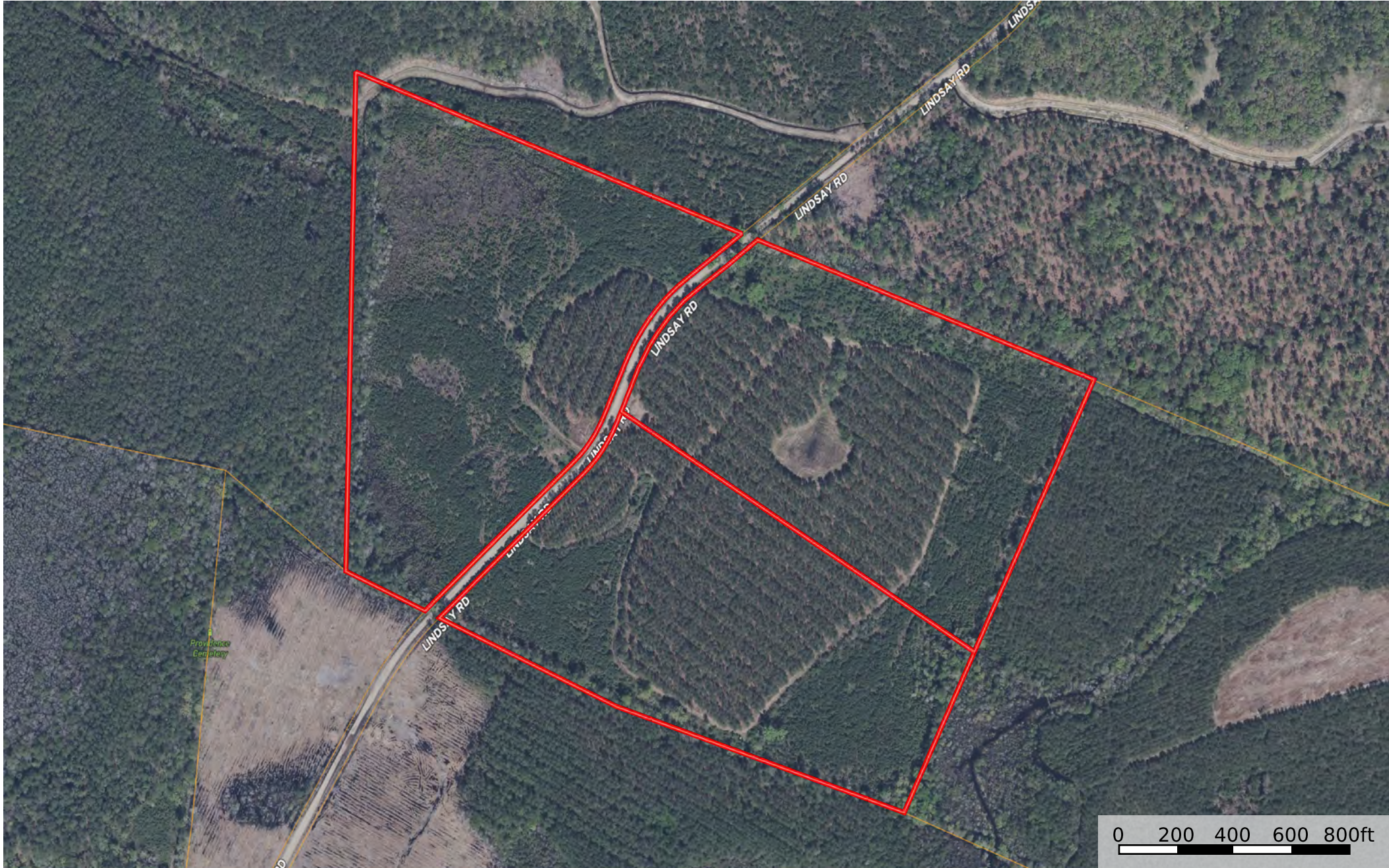
Boundary

Disclaimer: All information provided is assumed accurate and correct but no assumptions of liability are intended. Neither the seller nor the agent of the seller represent the accuracy of the information provided. No representations or warranties are expressed or implied as to the property, its condition, usage, acreage, or boundaries. This offering is subject to errors and omissions as well as changes including price or withdrawal without notice.



 Boundary

Disclaimer: All information provided is assumed accurate and correct but no assumptions of liability are intended. Neither the seller nor the agent of the seller represent the accuracy of the information provided. No representations or warranties are expressed or implied as to the property, its condition, usage, acreage, or boundaries. This offering is subject to errors and omissions as well as changes including price or withdrawal without notice.



Boundary

Disclaimer: All information provided is assumed accurate and correct but no assumptions of liability are intended. Neither the seller nor the agent of the seller represent the accuracy of the information provided. No representations or warranties are expressed or implied as to the property, its condition, usage, acreage, or boundaries. This offering is subject to errors and omissions as well as changes including price or withdrawal without notice.