



PARKS MILL FARM
MORGAN COUNTY, GA
160.29 +/- ACRES
\$1,099,000



PROPERTY DESCRIPTION

Parks Mill Farm in Morgan County, GA, is conveniently located 60 miles from Atlanta and 30 miles from Athens. This tract is primarily forested, consisting of Loblolly Pine planted in 1993. It has been thinned twice, and a well-stocked growing saw timber stand remains. The internal wood roads provide easy access across the rolling terrain, and on the western side of the property, you will find a flowing branch. There are two access points to the property, one along Parks Mill Road and the other at the end of Parks Mill Lane.

Parks Mill Farm is currently zoned AR (Agriculture Residential District) by Morgan County. The surrounding neighborhood is beautiful, with well-appointed and constructed homes near the fronting of Lake Oconee, less than a mile away.

PROPERTY FEATURES:

- Several Potential Homesites
- Less Than A Mile To Lake Oconee
- Accessible From Two County Roads
- Close Proximity To Atlanta & Athens

DIRECTIONS:

From Interstate 20, Take exit 121. Head North 1.2 miles to Buckhead. Take a right on Parks Mill Road and travel southeast 5.2 miles, crossing back over I-20. The property will have an old house and a grassed field on the left. Travel less than 1/4 of a mile and take a left on Parks Mill Lane. This road stops at the property line with gates.

CONTACT

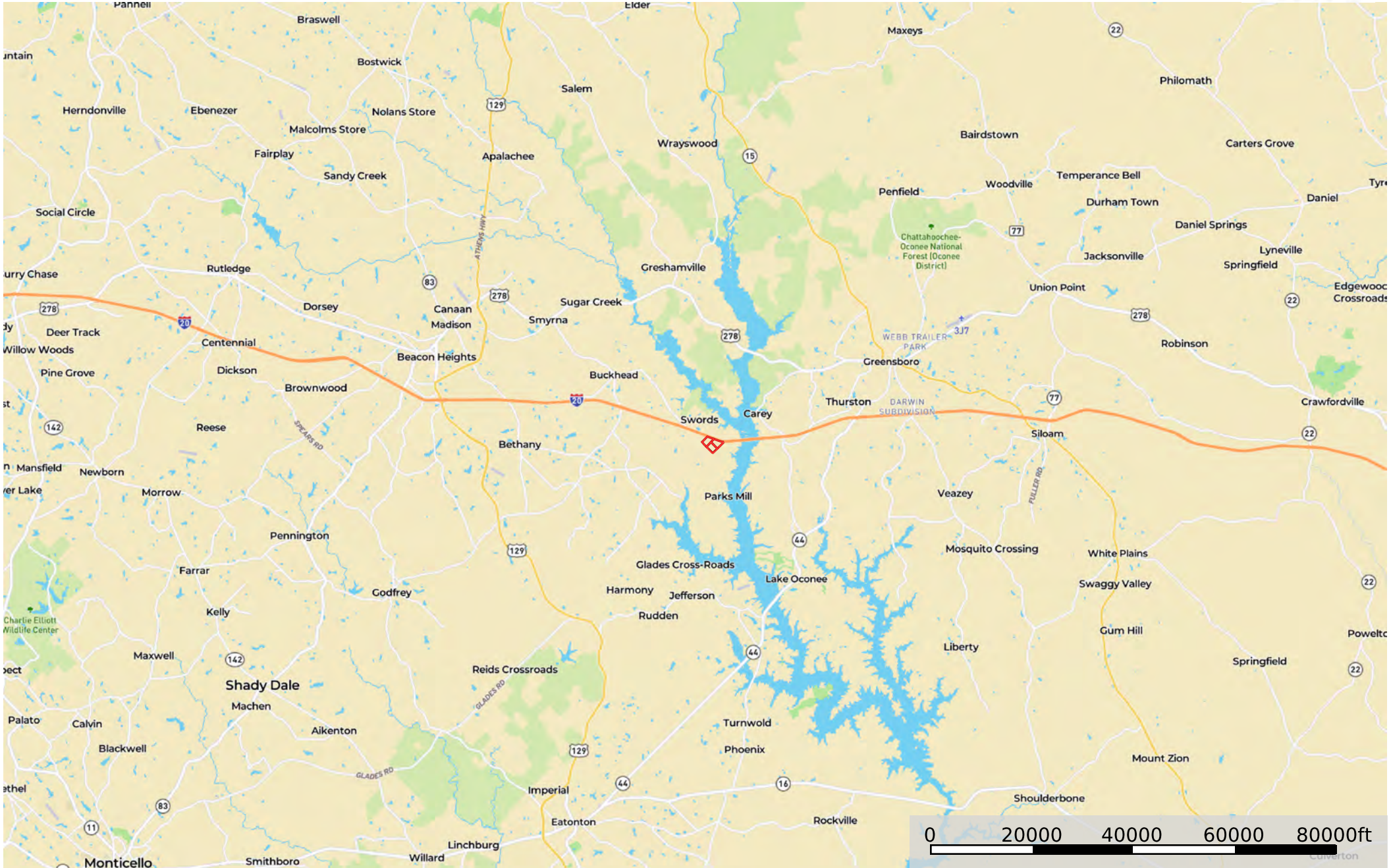
Alex Nixon

O: 843-782-5700 | M: 706-840-3739

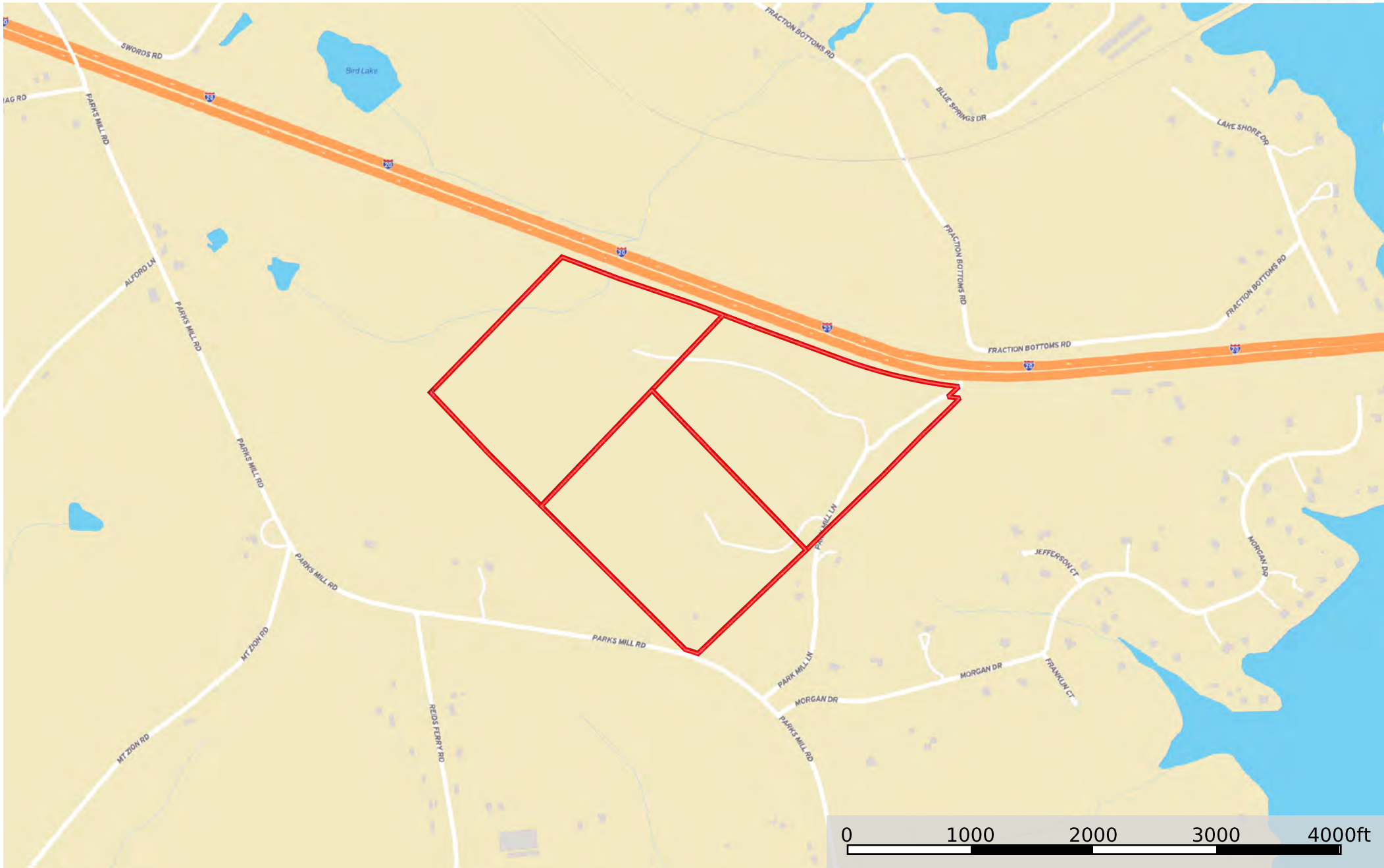
Email: alexnixon@crosbylandco.com


www.CrosbyLandCo.com

Parks Mill Farm
Morgan County, Georgia, 160.29 AC +/-



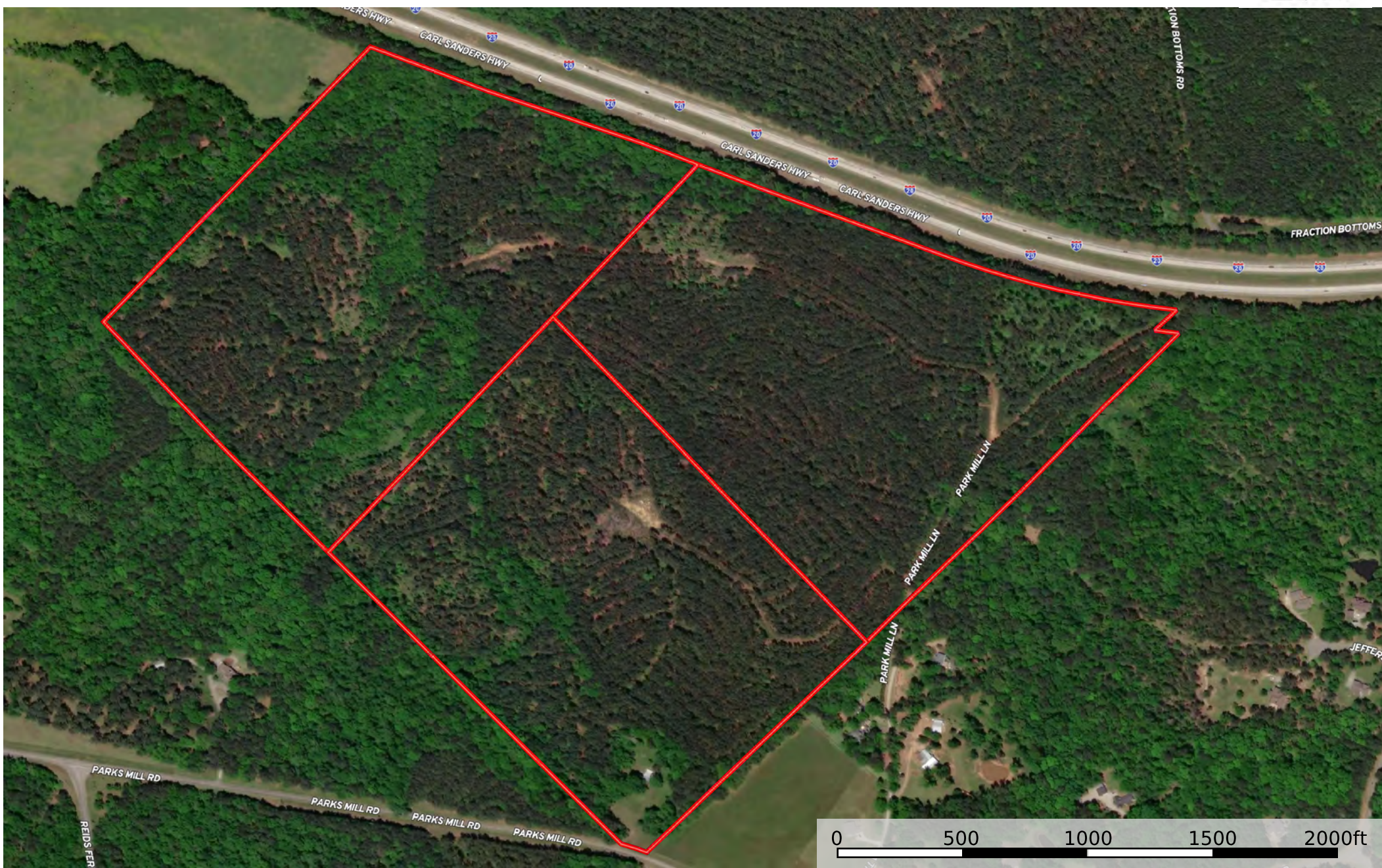
Disclaimer: All information provided is assumed accurate and correct but no assumptions of liability are intended. Neither the seller nor the agent of the seller represent the accuracy of the information provided. No representations or warranties are expressed or implied as to the property, its condition, usage, acreage, or boundaries. This offering is subject to errors and omissions as well as changes including price or withdrawal without notice.



 Boundary

Disclaimer: All information provided is assumed accurate and correct but no assumptions of liability are intended. Neither the seller nor the agent of the seller represent the accuracy of the information provided. No representations or warranties are expressed or implied as to the property, its condition, usage, acreage, or boundaries. This offering is subject to errors and omissions as well as changes including price or withdrawal without notice.

Morgan County, Georgia, 160.29 AC +/-



Disclaimer: All information provided is assumed accurate and correct but no assumptions of liability are intended. Neither the seller nor the agent of the seller represent the accuracy of the information provided. No representations or warranties are expressed or implied as to the property, its condition, usage, acreage, or boundaries. This offering is subject to errors and omissions as well as changes including price or withdrawal without notice.