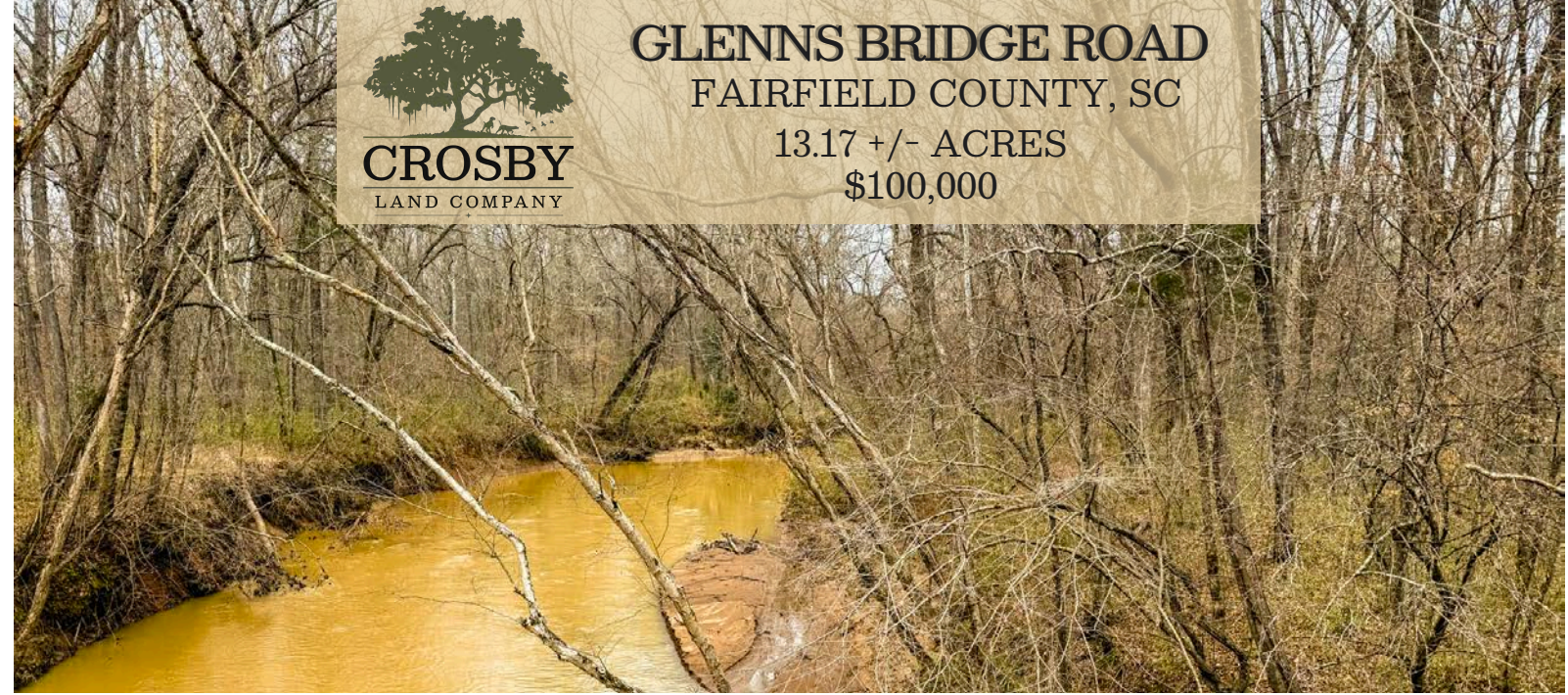


GLENN'S BRIDGE ROAD FAIRFIELD COUNTY, SC

13.17 +/- ACRES
\$100,000



PROPERTY DESCRIPTION

Enjoy the best of country living with this beautiful 13+/- acre tract featuring frontage on the Little River. Whether you're looking for a private homesite, weekend retreat, or hunting getaway, this property offers the perfect blend of recreation and potential.

With direct river frontage, you'll enjoy peaceful views, the sound of flowing water, and excellent habitat for wildlife. The tract is loaded with deer and turkey, making it an outstanding small-acreage hunting property. There is ample room for a private homesite overlooking the river, giving you the opportunity to build your dream home or cabin in a scenic, secluded setting.

Small riverfront tracts like this are hard to find, especially with strong hunting and homesite potential all in one package.

PROPERTY FEATURES:

- Secluded
- Hunting Retreat
- Little River Frontage

DIRECTIONS:

From Winnsboro, take 321 south 1.4 miles. Keep right on SC 269 for 7.1 miles and turn right onto Estes Lane. Travel for 4.2 miles and turn left onto Glenn's Bridge Road. In 1 mile the property will be on the right.

CONTACT

Clem Coleman

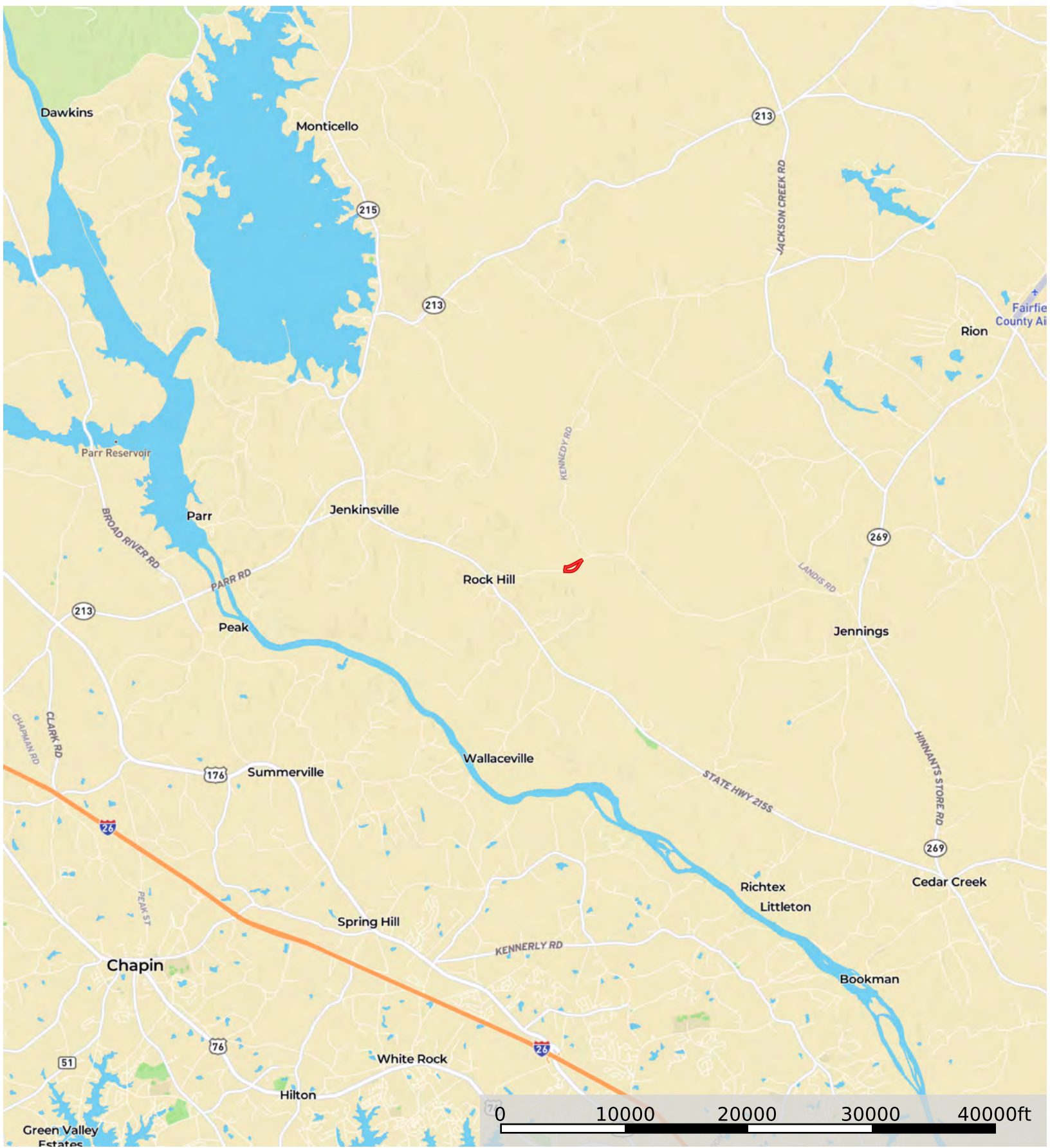
O: 843.782.5700 - M: 843.601.3050

Email: clemcoleman@crosbylandco.com

www.CrosbyLandCo.com

Glenns Bridge Road

Fairfield County, South Carolina, 13.17 AC +/-




Boundary

Disclaimer: All persons entering upon the property do so at their own risk, all entrants assume all risks and liabilities and agree to indemnify, defend, and hold harmless Seller, its affiliates, officers, directors, managers, agents, representatives, and employees from any and all claims, demands, causes of action, injuries (including death), or damages arising out of, incidental to, or in any way resulting from inspections or exposure to the property. Property inspections shall be conducted during daylight hours only. Seller and Crosby Land Company, Inc. make no representations or warranties as to the condition of the property, access, usage, acreage, or boundaries. All information provided is assumed accurate but is not guaranteed, and no liability is assumed. This offering is subject to errors, omissions, price changes, or withdrawal without notice.

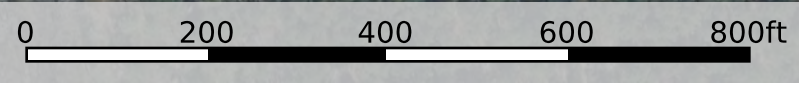
Todd Crosby
P: 8437825700 Crosbylandco.com


The information contained herein was obtained from sources deemed to be reliable. Land id® Services makes no warranties or guarantees as to the completeness or accuracy thereof.



 **Boundary**

Disclaimer: All persons entering upon the property do so at their own risk, all entrants assume all risks and liabilities and agree to indemnify, defend, and hold harmless Seller, its affiliates, officers, directors, managers, agents, representatives, and employees from any and all claims, demands, causes of action, injuries (including death), or damages arising out of, incidental to, or in any way resulting from inspections or exposure to the property. Property inspections shall be conducted during daylight hours only. Seller and Crosby Land Company, Inc. make no representations or warranties as to the condition of the property, access, usage, acreage, or boundaries. All information provided is assumed accurate but is not guaranteed, and no liability is assumed. This offering is subject to errors, omissions, price changes, or withdrawal without notice.



 Boundary

Disclaimer: All persons entering upon the property do so at their own risk, all entrants assume all risks and liabilities and agree to indemnify, defend, and hold harmless Seller, its affiliates, officers, directors, managers, agents, representatives, and employees from any and all claims, demands, causes of action, injuries (including death), or damages arising out of, incidental to, or in any way resulting from inspections or exposure to the property. Property inspections shall be conducted during daylight hours only. Seller and Crosby Land Company, Inc. make no representations or warranties as to the condition of the property, access, usage, acreage, or boundaries. All information provided is assumed accurate but is not guaranteed, and no liability is assumed. This offering is subject to errors, omissions, price changes, or withdrawal without notice.