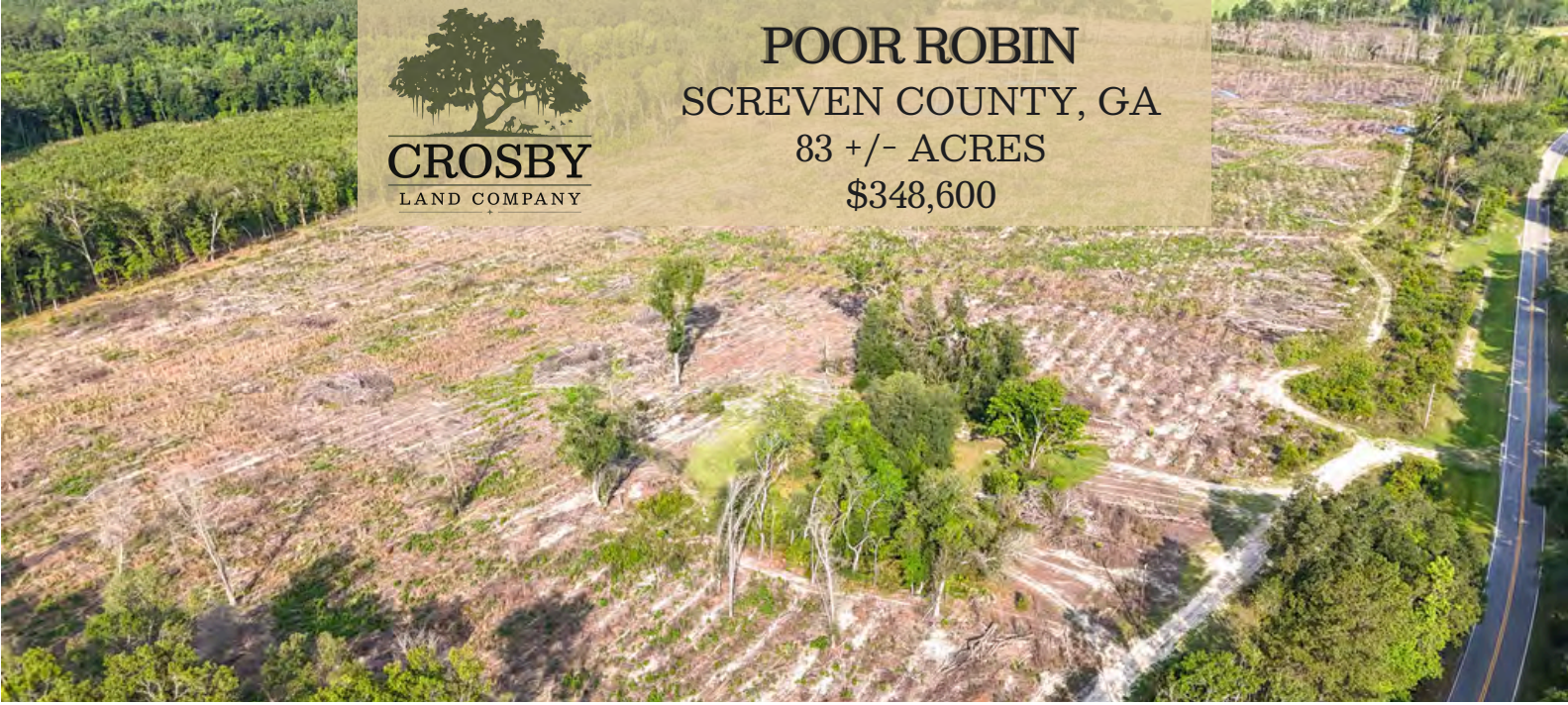




POOR ROBIN

SCREVEN COUNTY, GA

83 +/- ACRES
\$348,600



PROPERTY DESCRIPTION

Located just 6 miles SE of Sylvania in Screven County, this 83-acre property offers a multitude of potential uses for the next owner. Located in an area that has strong demand for small to medium-sized properties, this is an ideal property for a family residence or a weekend hunting retreat. The property offers a rolling topography comprising 83 acres of 2024 planted loblolly. Located on the NW side is a small creek known as South Prong Buck Creek, adding habitat diversity for wild game, including a good population of deer and turkey. Located on the eastern side of the property and adjacent to Old Poor Robin Road are remnants of an old homesite. The remains include a sugar cane grinding site with the brick chimney still standing but without the cast syrup kettle that once occupied the space. Whether seeking a productive timber asset, a recreational getaway, or a future homestead site, this versatile tract checks all the boxes in a quiet and accessible part of eastern Georgia.

PROPERTY FEATURES:

- Creek
- Potential Homesites
- Diverse Wildlife Habitat
- Excellent Hunting Opportunity

DIRECTIONS:

From Sylvania, head southeast on Millen Road and take a left onto W Ogeechee Street. Continue and then take a slight left onto E Ogeechee Street. Travel for 2.3 miles and continue onto Buck Creek Road for an additional two miles. Turn right on Knobblock Rd for .5 miles, then take a left onto Old Poor Robin Road. In 1.6 miles, the property will be on the right.

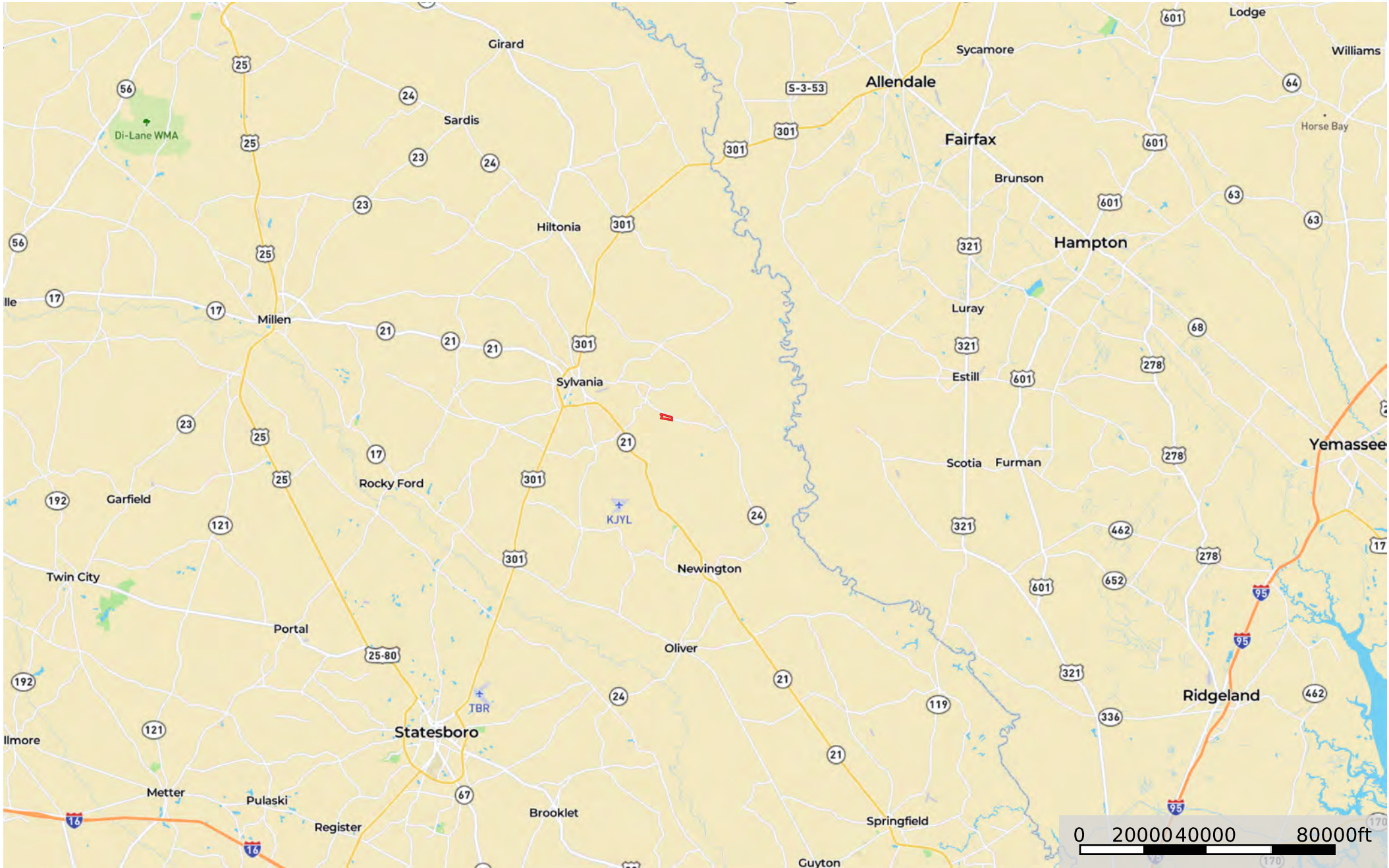
CONTACT


Todd Crosby, BIC, ALC

O: 843-782-5700

Email: todd Crosby@crosbylandco.com

www.CrosbyLandCo.com



 Boundary

Disclaimer: All information provided is assumed accurate and correct but no assumptions of liability are intended. Neither the seller nor the agent of the seller represent the accuracy of the information provided. No representations or warranties are expressed or implied as to the property, its condition, usage, acreage, or boundaries. This offering is subject to errors and omissions as well as changes including price or withdrawal without notice.




Boundary

Disclaimer: All information provided is assumed accurate and correct but no assumptions of liability are intended. Neither the seller nor the agent of the seller represent the accuracy of the information provided. No representations or warranties are expressed or implied as to the property, its condition, usage, acreage, or boundaries. This offering is subject to errors and omissions as well as changes including price or withdrawal without notice.





 Boundary

Disclaimer: All information provided is assumed accurate and correct but no assumptions of liability are intended. Neither the seller nor the agent of the seller represent the accuracy of the information provided. No representations or warranties are expressed or implied as to the property, its condition, usage, acreage, or boundaries. This offering is subject to errors and omissions as well as changes including price or withdrawal without notice.