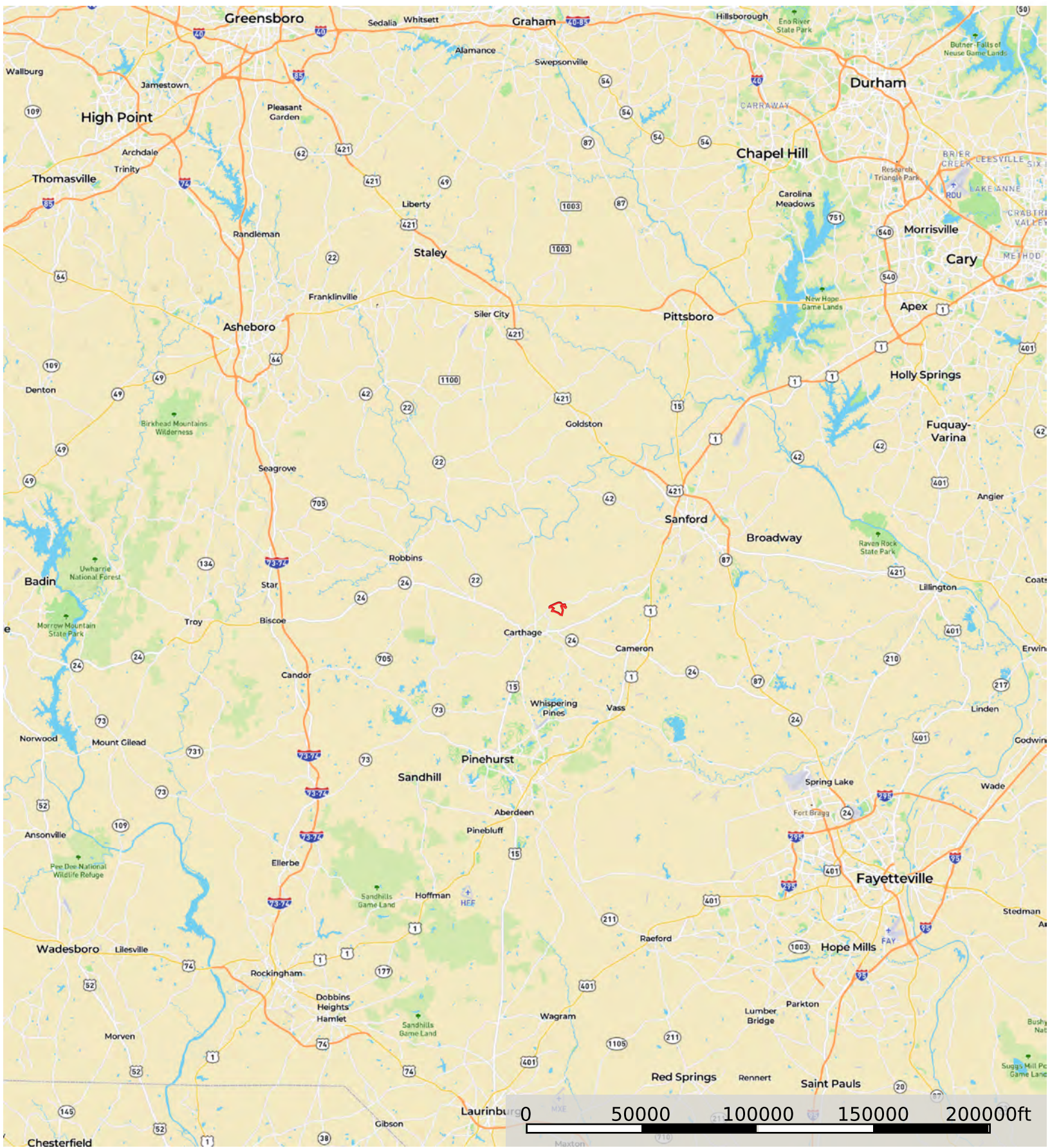


Catchmark IV

Moore County, North Carolina, 426.3 AC +/-



Boundary

Disclaimer: All persons entering upon the property do so at their own risk, all entrants assume all risks and liabilities and agree to indemnify, defend, and hold harmless Seller, its affiliates, officers, directors, managers, agents, representatives, and employees from any and all claims, demands, causes of action, injuries (including death), or damages arising out of, incidental to, or in any way resulting from inspections or exposure to the property. Property inspections shall be conducted during daylight hours only. Seller and Crosby Land Company, Inc. make no representations or warranties as to the condition of the property, access, usage, acreage, or boundaries. All information provided is assumed accurate but is not guaranteed, and no liability is assumed. This offering is subject to errors, omissions, price changes, or withdrawal without notice.

Todd Crosby
P: 8437825700
Crosbylandco.com

The information contained herein was obtained from sources deemed to be reliable. Land id® Services makes no warranties or guarantees as to the completeness or accuracy thereof.