

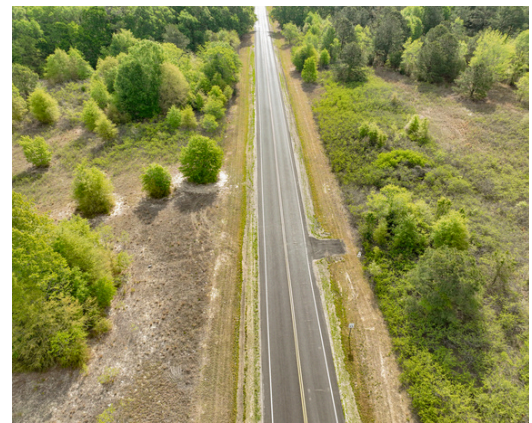
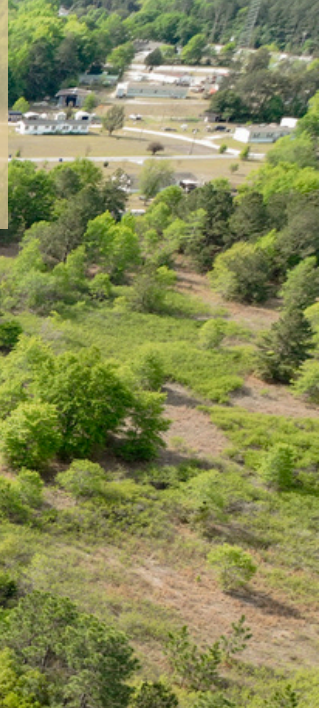


# LITTLE LATTA RETREAT

MARLBORO COUNTY, SC

25.41 +/- ACRES

\$280,000



## PROPERTY DESCRIPTION

Explore the possibilities with this beautiful 25.41-acre tract located in the Latta area of Marlboro County. Offering an impressive approximately 1,000 feet of frontage along both sides of Highway 34, as well as 540 feet of frontage on Hood Road, this property provides exceptional access and visibility, making it a rare and versatile opportunity. The land is densely wooded, offering privacy, natural beauty, and the perfect setting for a variety of uses. Whether you're looking to establish a permanent residence tucked away in nature, create a small hobby farm, or explore potential subdivision opportunities, this tract has the space and flexibility to bring your vision to life.

With its generous road frontage and prime location, this property combines rural charm with development potential, ideal for investors, builders, or anyone seeking acreage with long-term value.

## PROPERTY FEATURES:

- Private
- Densely Wooded
- 540 Feet Of Frontage Along Hood Rd
- 1000 Feet Of Frontage On Each Side Of Highway 34

## DIRECTIONS:

From Latta head towards S Richardson St and continue for 5.2 miles. Then turn right onto SC 38 W and continue for 6.3 miles then turn right onto SC-34-E in .4 miles the property will be on both sides of the road.

## CONTACT

Jared Griffith  
864-314-1801

jaredgriffith@crosbylandco.com  
www.CrosbyLandCo.com