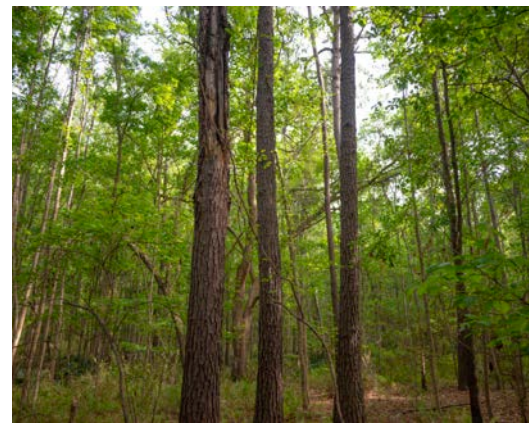
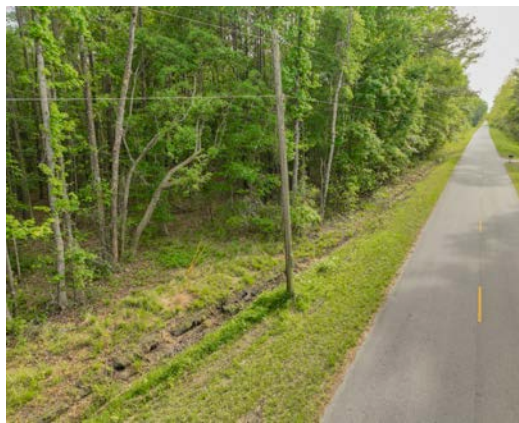


WIMBEE LANDING
BEAUFORT COUNTY, SC
10.5 +/- ACRES
\$194,250



PROPERTY DESCRIPTION

Discover the perfect blend of privacy and Lowcountry charm with this beautiful 10.5-acre property on Wimbee Landing Road in the Lobeco community in Beaufort County, South Carolina. Tucked away in a peaceful, natural setting, this fully wooded tract offers an ideal opportunity to build your dream home, private retreat, or investment property. The land is rich with mature timber and features several stunning live oak trees that add character, shade, and timeless Southern appeal. Whether you envision a quiet homestead surrounded by nature or a weekend getaway, this property provides a serene backdrop with endless possibilities.

Conveniently located just 1.5 miles from the Wimbee Creek boat ramp, you'll have easy access to boating, fishing, and all the outdoor recreation the Lowcountry has to offer. Plus, you're only 15 miles from downtown Beaufort, giving you the perfect balance of seclusion and accessibility to shopping, dining, and coastal attractions. If you've been searching for acreage with natural beauty, privacy, and proximity to the water, this property is a rare find.

PROPERTY FEATURES:

- Paved Road Frontage
- Close Proximity to Beaufort
- 1.5 miles from Wimbee Creek Boat Ramp

DIRECTIONS:

From Beaufort: Head west on SC-170 W (Robert Smalls Parkway) toward Yemassee. Continue on SC-170 W for approximately 10 miles then Turn left onto Wimbee Landing Road. Continue on Wimbee Landing Road for about 1.75 miles and the property is on the right.

CONTACT

Jared Griffith
864-314-1801
jaredgriffith@crosbylandco.com
www.CrosbyLandCo.com