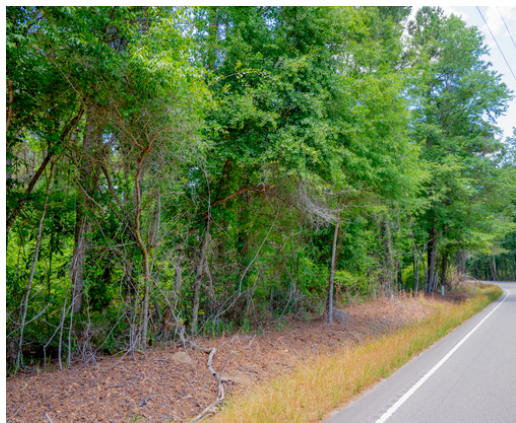




# ROUND O ROAD COLLETON COUNTY, SC

9.72 +/- ACRES  
\$120,000



## PROPERTY DESCRIPTION

This 9.72-acre property in Round O, SC, offers an excellent opportunity for a private homesite, large residential estate, or weekend retreat in the heart of the Lowcountry. The property features mature pines and scattered oaks that provide seclusion and privacy from the paved frontage along Round O Road. Conveniently located just 10 minutes from Walterboro, 25 minutes from Summerville, and approximately one hour from Charleston, with nearby Highway 17A offering easy access to surrounding communities. Whether you are seeking a future homesite on spacious acreage or a peaceful weekend getaway, this property presents a variety of possibilities to make your vision a reality.

## PROPERTY FEATURES:

- Mature Pine Timber
- Paved Road Frontage
- Close Proximity to Summerville

## DIRECTIONS:

From Hwy 17A, turn heading north onto Round O Road, travel for one mile and the property will be on your left.

**CONTACT**  
Cale Lewis  
O: 843-478-4254  
Email: [calelewis@crosbylandco.com](mailto:calelewis@crosbylandco.com)  
[www.CrosbyLandCo.com](http://www.CrosbyLandCo.com)