

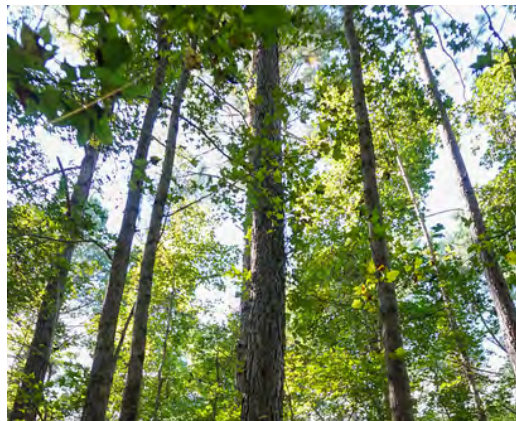


WITTEE BRANCH #3

WILLIAMSBURG COUNTY, SC

58+/- ACRES

\$285,750



PROPERTY DESCRIPTION

The Wittee Branch #3 tract is located just 3 miles from the Wee Tee WMA, and only 47 miles from Mount Pleasant, South Carolina.

The landscape of the property is comprised of 58 acres of merchantable pine plantation. There are potential revenue streams available with the continuance of sound forestry management practices. The property offering is well suited for a multitude of applications such as timber investment, outdoor recreational pursuits, and even an excellent location for a permanent residence in a quiet rural setting.

PROPERTY FEATURES:

- 2,700 +/- feet of paved road frontage
- Merchantable Timber

DIRECTIONS

From Andrews take SC-41 for 8.8 miles, then turn right onto Santee Road. Continue straight for 6.4 miles and the property will be on the right

CONTACT

Jared Griffith

O: 843-782-5700 ~ M: 864-314-1801

Email: jaredgriffith@crosbylandco.com

www.CrosbyLandCo.com