

**Custom Brick and Stone Home on 3+/- AC**  
27859 State Highway K  
Bloomfield, MO 63825

**\$435,000**  
2.860± Acres  
Stoddard County





**Custom Brick and Stone Home on 3+/- AC  
Bloomfield, MO / Stoddard County**

---

**SUMMARY**

**Address**

27859 State Highway K

**City, State Zip**

Bloomfield, MO 63825

**County**

Stoddard County

**Type**

Residential Property, Single Family

**Latitude / Longitude**

37.020237 / -89.959539

**Dwelling Square Feet**

1932

**Bedrooms / Bathrooms**

3 / 2

**Acreage**

2.860

**Price**

\$435,000

**Property Website**

<https://www.mossyoakproperties.com/property/custom-brick-and-stone-home-on-3-ac-stoddard-missouri/92164/>



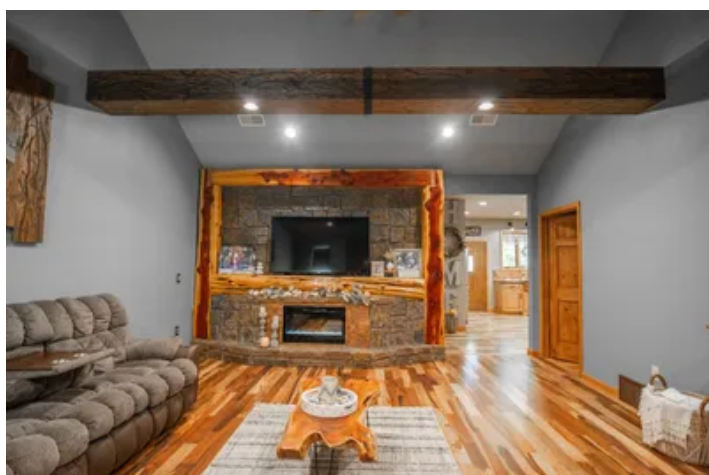
## Custom Brick and Stone Home on 3+/- AC Bloomfield, MO / Stoddard County

---

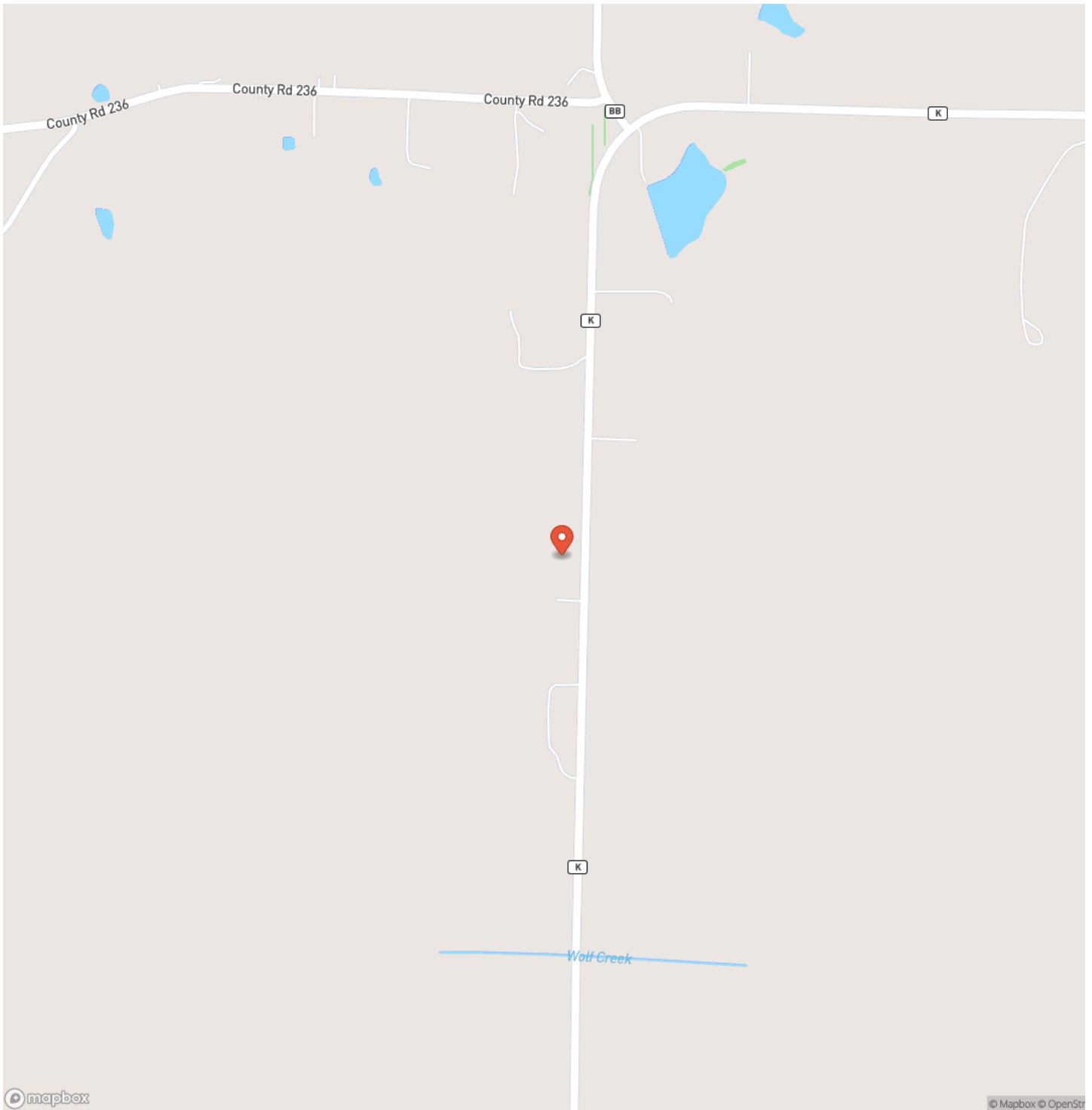
### **PROPERTY DESCRIPTION**

Custom brick and stone home on nearly 3 acres offering high-end finishes and rustic charm. Inside, the gourmet kitchen features Cambria quartz countertops, a copper farmhouse sink, maple-glazed cabinets, ledgerstone pillars, and a full KitchenAid appliance suite. The home features two master suites, each with a cedar-framed bed, a walk-in closet, and hardwood floors. A spacious third bedroom, currently used as a study, and a versatile bonus room, ideal for storage or a nursery, provide additional flexibility. Both master suite bathrooms are beautifully finished with custom cabinetry, stone sinks, quartz countertops, and tiled showers. The living room offers a warm, rustic feel with a custom stone fireplace wrapped in cedar, vaulted ceilings with custom beams, and a knotty alder front door. Enjoy the outdoors with concrete front and back porches, a 30x30 shop with a 10x30 overhang, and an oversized two-car garage. Quality craftsmanship and thoughtful design make this home a standout property in a peaceful country setting.

Custom Brick and Stone Home on 3+/- AC  
Bloomfield, MO / Stoddard County

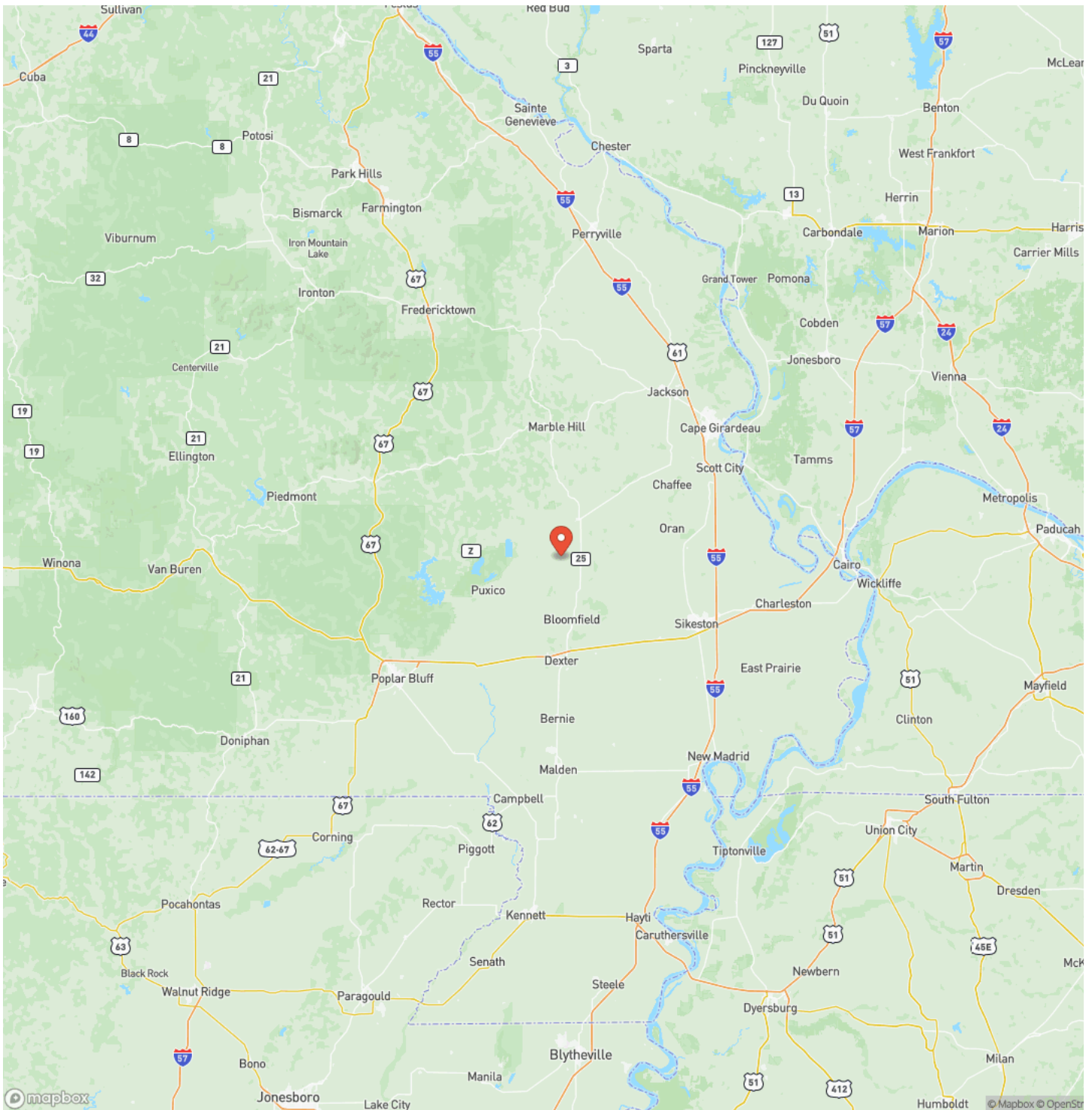


## Locator Map





## Locator Map



## Satellite Map



## Custom Brick and Stone Home on 3+/- AC Bloomfield, MO / Stoddard County

## LISTING REPRESENTATIVE

**For more information contact:**



### Representative

Matthew Tubb

## Mobile

(573) 776-8200

## Office

(573) 712-2252

## Email

mtubb@mossyoakproperties.com

**Address**

947 N Westwood Blvd

## City / State / Zip

## NOTES

[illegible]



## This image shows a blank sheet of white paper with horizontal ruling lines. The lines are evenly spaced and run across the width of the page. There are no margins, text, or other markings on the paper.



**MORE INFO ONLINE:**  
**MossyOakProperties.com**

## **DISCLAIMERS**

Information in this brochure is provided solely for information purposes and does not constitute an offer to sell or advertise real estate outside the states in which broker or agent licensed. The information presented has been obtained from sources deemed to be reliable, but is not guaranteed or warranted by the agent, broker, or the sellers of these properties. This offering is subject to errors, omissions, prior sale, price change, correction or withdrawal from the market without notice. All references to age, square footage, income, expenses, acreage, carrying capacity, and land classification, etc. are approximate. Prospective buyers are chargeable with and expected to conduct their own independent investigation of the information and the property and to rely only on those results. Sellers reserve the right to accept or reject any and all offers without liability to any buyer or cooperating broker.

Maps are provided for illustration purposes only, the accuracy is not warranted. Parcels on interactive maps are not adjusted to match aerial backgrounds. This information is for reference purposes only and is not a legal document. Data maps contain errors. The seller and seller's agent are making known to all potential buyers that there may be variations between the location of the existing fence lines and the legal description of the deeded property. Seller and seller's agent make no warranties with regard to the location of the fence lines in relationship to the deeded property lines, nor does the Seller make any warranties or representations with regard to the specific acreage contained within the fenced property lines. Seller is selling the property in an "as is" condition, which includes the location of the fences as they exist. Boundaries shown on the accompanying maps are approximate, based on county parcel data. The maps are not to scale. The accuracy of the maps is not guaranteed. Prospective buyers are encouraged to verify fence lines, deeded property lines and acreages using a licensed surveyor at their own expense.

---

**Mossy Oak Properties Mozark Realty**  
947 N. Westwood Blvd.  
Poplar Bluff, MO 63901  
(573) 712-2252  
[MossyOakProperties.com](http://MossyOakProperties.com)

---