

Remodeled 2 Bed, 1 Bath Home with 6.2 AC+/-
9478 Highway PP
Poplar Bluff, MO 63901

\$172,000
6.200± Acres
Butler County



**Remodeled 2 Bed, 1 Bath Home with 6.2 AC+/-
Poplar Bluff, MO / Butler County**

SUMMARY

Address

9478 Highway PP

City, State Zip

Poplar Bluff, MO 63901

County

Butler County

Type

Residential Property, Recreational Land

Latitude / Longitude

36.8029255 / -90.5365354

Dwelling Square Feet

1236

Bedrooms / Bathrooms

2 / 1

Acreage

6.200

Price

\$172,000

Property Website

<https://www.mossyoakproperties.com/property/remodeled-2-bed-1-bath-home-with-6-2-ac-butler-missouri/35894/>



MORE INFO ONLINE:

MossyOakProperties.com



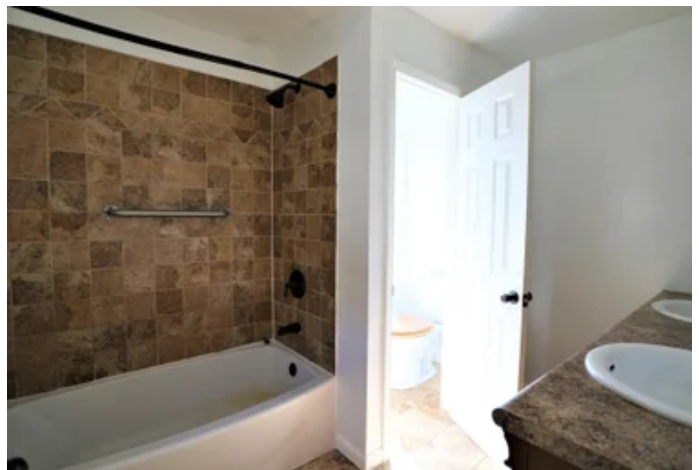
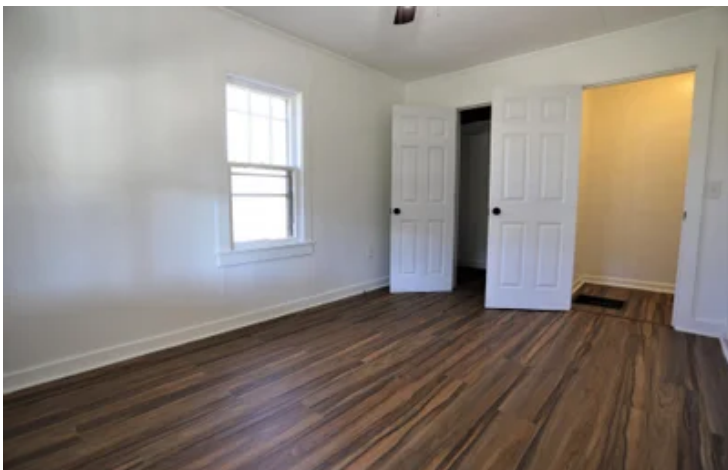
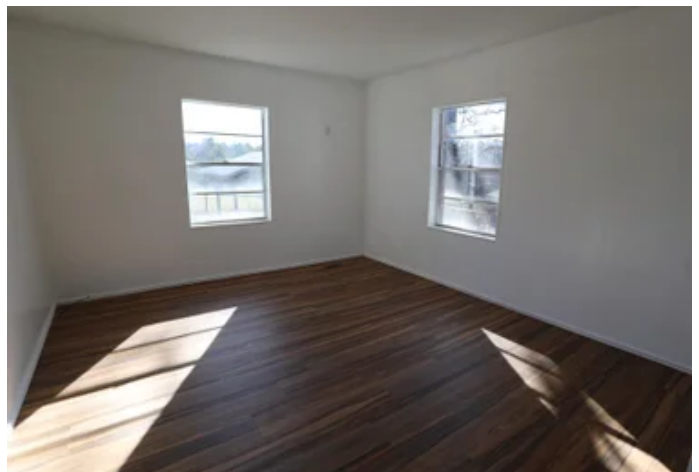
**Remodeled 2 Bed, 1 Bath Home with 6.2 AC+/-
Poplar Bluff, MO / Butler County**

PROPERTY DESCRIPTION

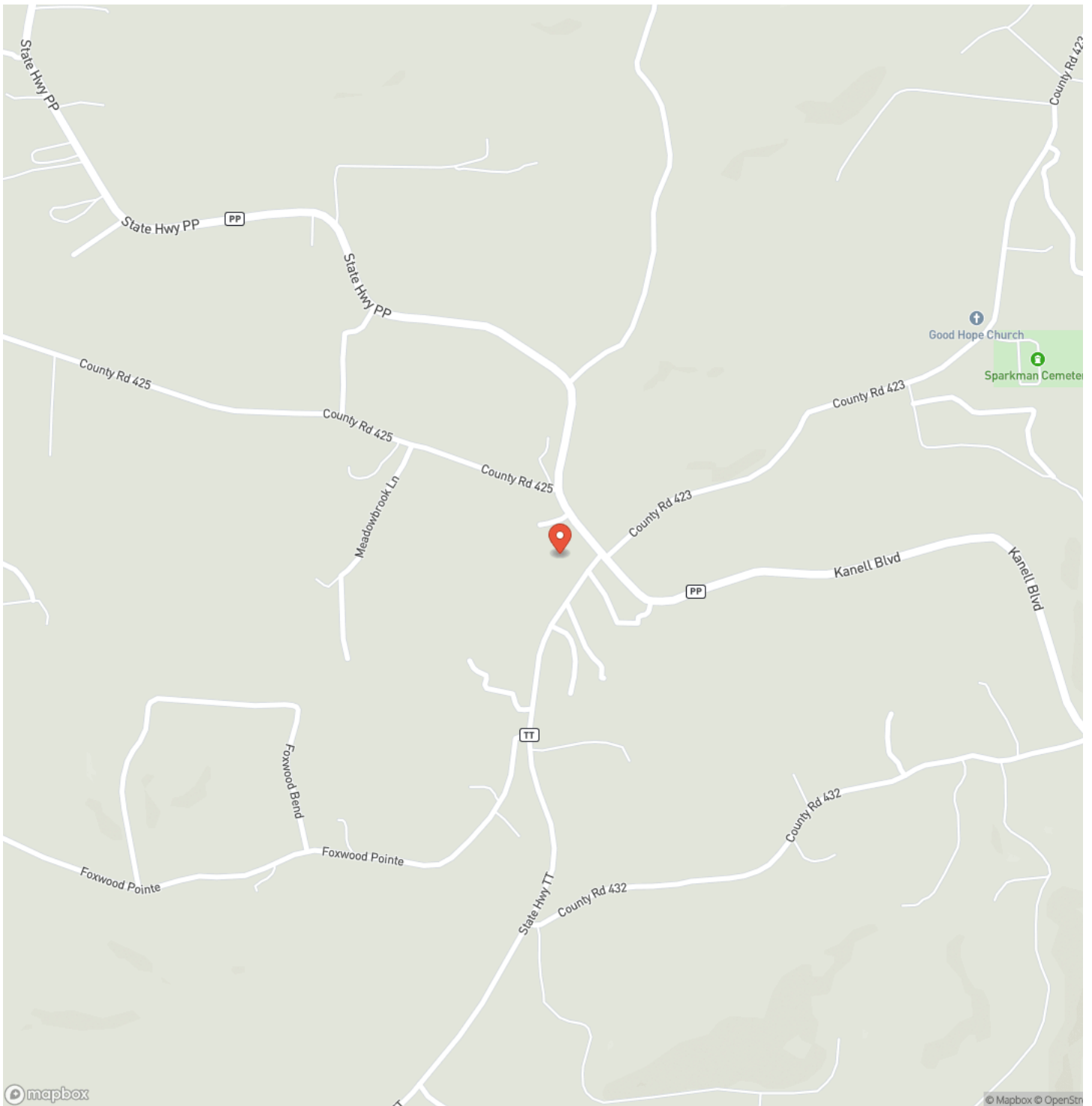
Check out this hobby farm just right outside of Poplar Bluff. The newly remodeled 2 bedroom 1 bath home is sitting on 6.2 acres fenced \ a stocked pond! The property has plenty of covered parking with two large car ports. This unique property is fenced and has held differei types of animals. An added bonus is no gravel all pavement, don't miss out on your chance of country living with beautiful views.



Remodeled 2 Bed, 1 Bath Home with 6.2 AC+/-
Poplar Bluff, MO / Butler County

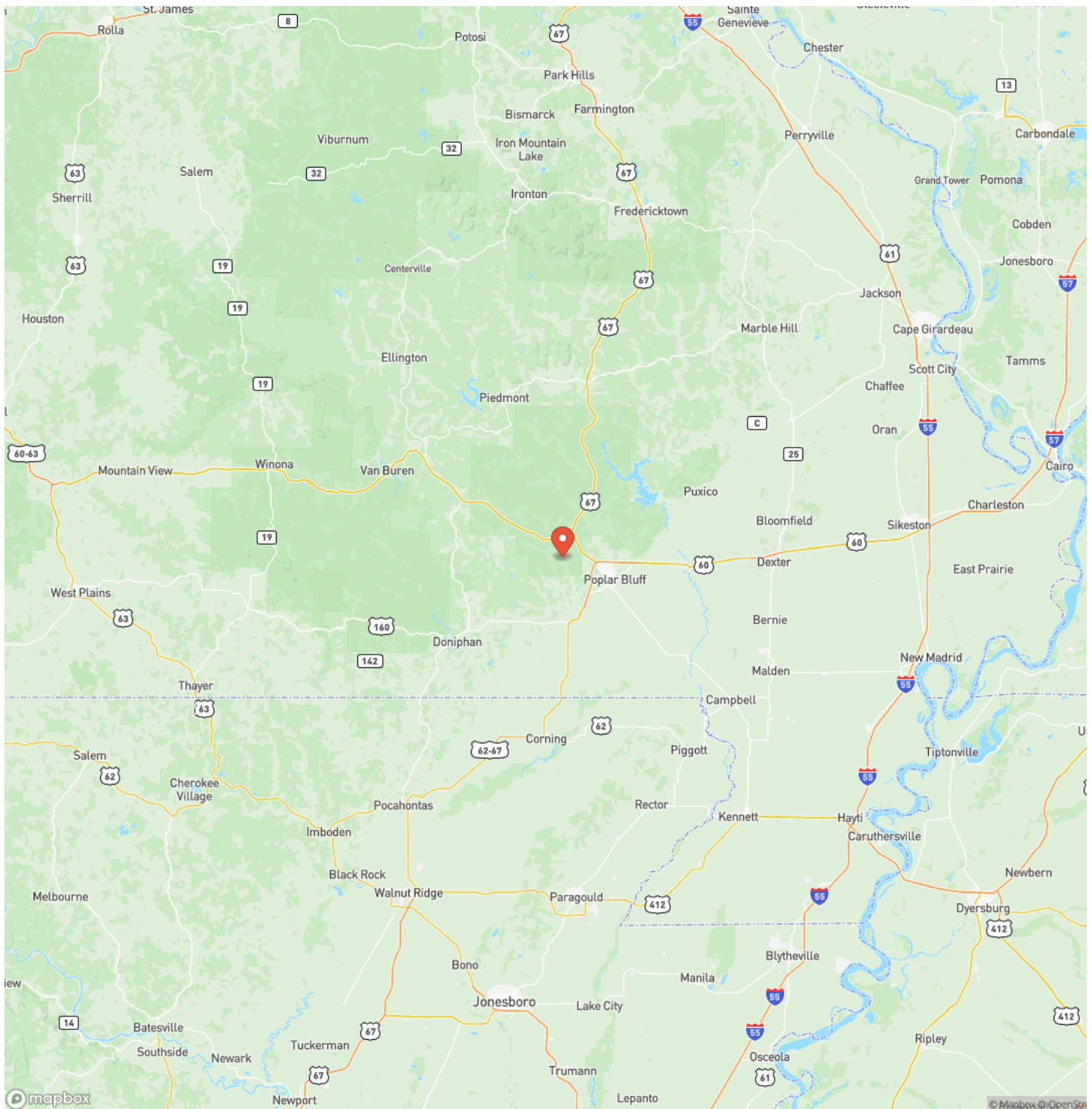


Locator Map

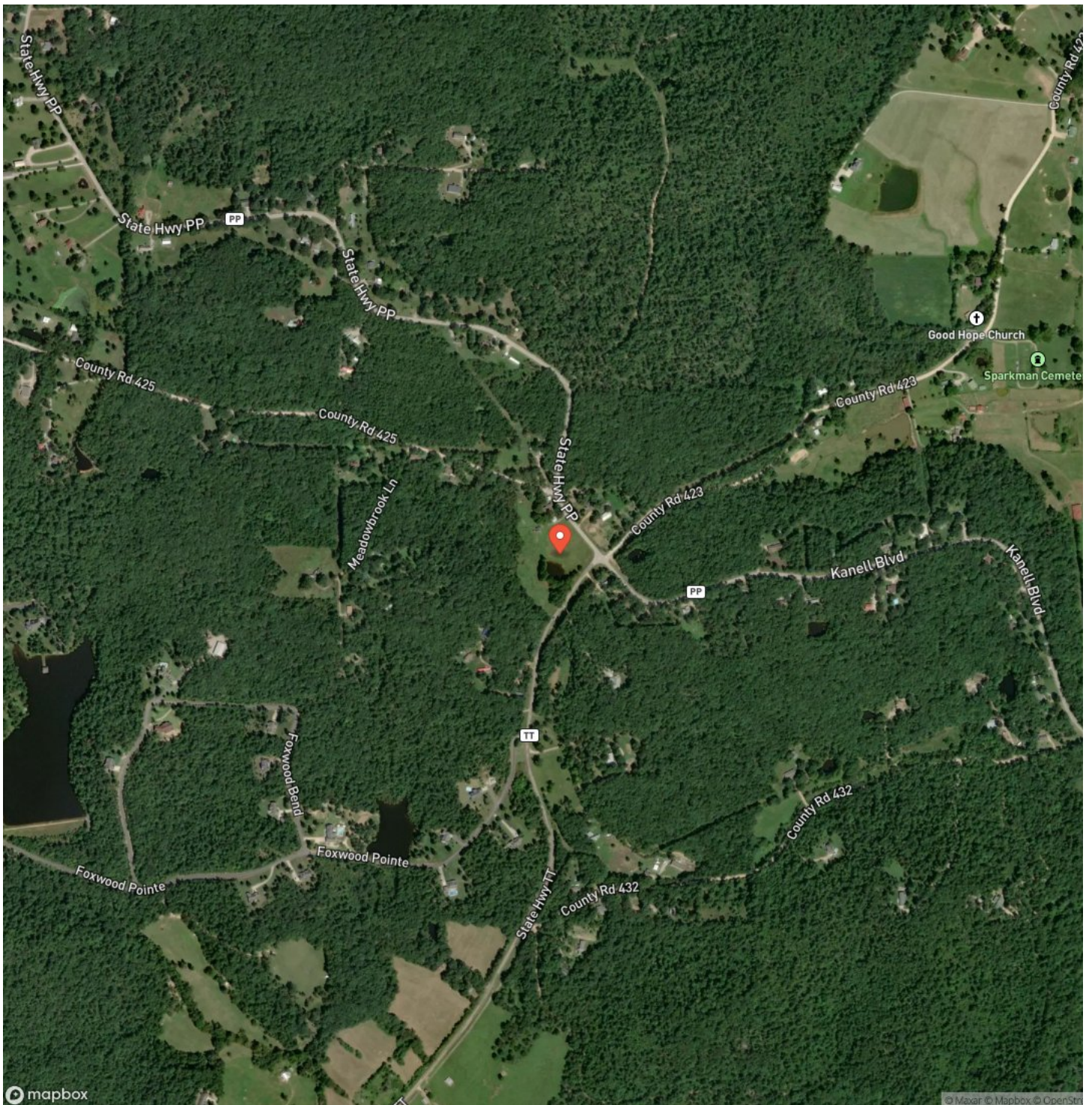


**Remodeled 2 Bed, 1 Bath Home with 6.2 AC+/-
Poplar Bluff, MO / Butler County**

Locator Map



Satellite Map



Remodeled 2 Bed, 1 Bath Home with 6.2 AC+/- Poplar Bluff, MO / Butler County

LISTING REPRESENTATIVE

For more information contact:



Representative

Matthew Tubb

Mobile

(573) 776-8200

Office

(573) 712-2252

Email

mtubb@mossyoakproperties.com

Address

947 N Westwood Blvd

City / State / Zip

Poplar Bluff, MO 63901

NOTES



MORE INFO ONLINE:

MossyOakProperties.com

[illegible]

DISCLAIMERS

Information in this brochure is provided solely for information purposes and does not constitute an offer to sell or advertise real estate outside the states in which broker or agent licensed. The information presented has been obtained from sources deemed to be reliable, is not guaranteed or warranted by the agent, broker, or the sellers of these properties. This offering is subject to errors, omissions, prior sale, price change, correction or withdrawal from the market without notice. All references to age, square footage, income, expenses, acreage, carrying capacity, and land classification, etc. are approximate. Prospective buyers are chargeable with and expected to conduct their own independent investigation of the information and the property and to rely only on those results. Sellers reserve the right to accept or reject any and all offers without liability to any buyer or cooperating broker.

Maps are provided for illustration purposes only, the accuracy is not warranted. Parcels on interactive maps are not adjusted to match aerial backgrounds. This information is for reference purposes only and is not a legal document. Data maps contain errors. The seller and seller's agent are making known to all potential buyers that there may be variations between the location of the existing fence lines and the legal description of the deeded property. Seller and seller's agent make no warranties with regard to the location of the fence lines in relation to the deeded property lines, nor does the Seller make any warranties or representations with regard to the specific acreage contained within the fenced property lines. Seller is selling the property in an "as is" condition, which includes the location of the fences as they exist. Boundaries shown on the accompanying maps are approximate, based on county parcel data. The maps are not to scale. The accuracy of the maps is not guaranteed. Prospective buyers are encouraged to verify fence lines, deeded property lines and acreages using a licensed surveyor at their own expense.



Mossy Oak Properties Mozark Realty
947 N. Westwood Blvd.
Poplar Bluff, MO 63901
(573) 712-2252
MossyOakProperties.com

