

Potential Commercial 12 AC Taylor County
TBD US HWY 19 S
Perry, FL 32348

\$199,000
12± Acres
Taylor County



**Potential Commercial 12 AC Taylor County
Perry, FL / Taylor County**

SUMMARY

Address

TBD US HWY 19 S

City, State Zip

Perry, FL 32348

County

Taylor County

Type

Recreational Land, Commercial, Undeveloped Land

Latitude / Longitude

30.031771 / -83.543619

Taxes (Annually)

\$890

Acreage

12

Price

\$199,000



Potential Commercial 12 AC Taylor County Perry, FL / Taylor County

PROPERTY DESCRIPTION

Situated directly off **US Highway 19 South**, this **12-acre parcel in Taylor County** stands out for its **commercial potential and strategic location**. With excellent highway frontage, high visibility, and steady traffic flow along one of the region's busiest routes, this property offers an ideal site for future development. Whether envisioned as a **retail center, service business, mixed-use project, or investment hold**, the groundwork is already in place. With county approval, the property can be **rezoned for commercial use**, and its size easily meets required square footage thresholds for a wide range of business types.

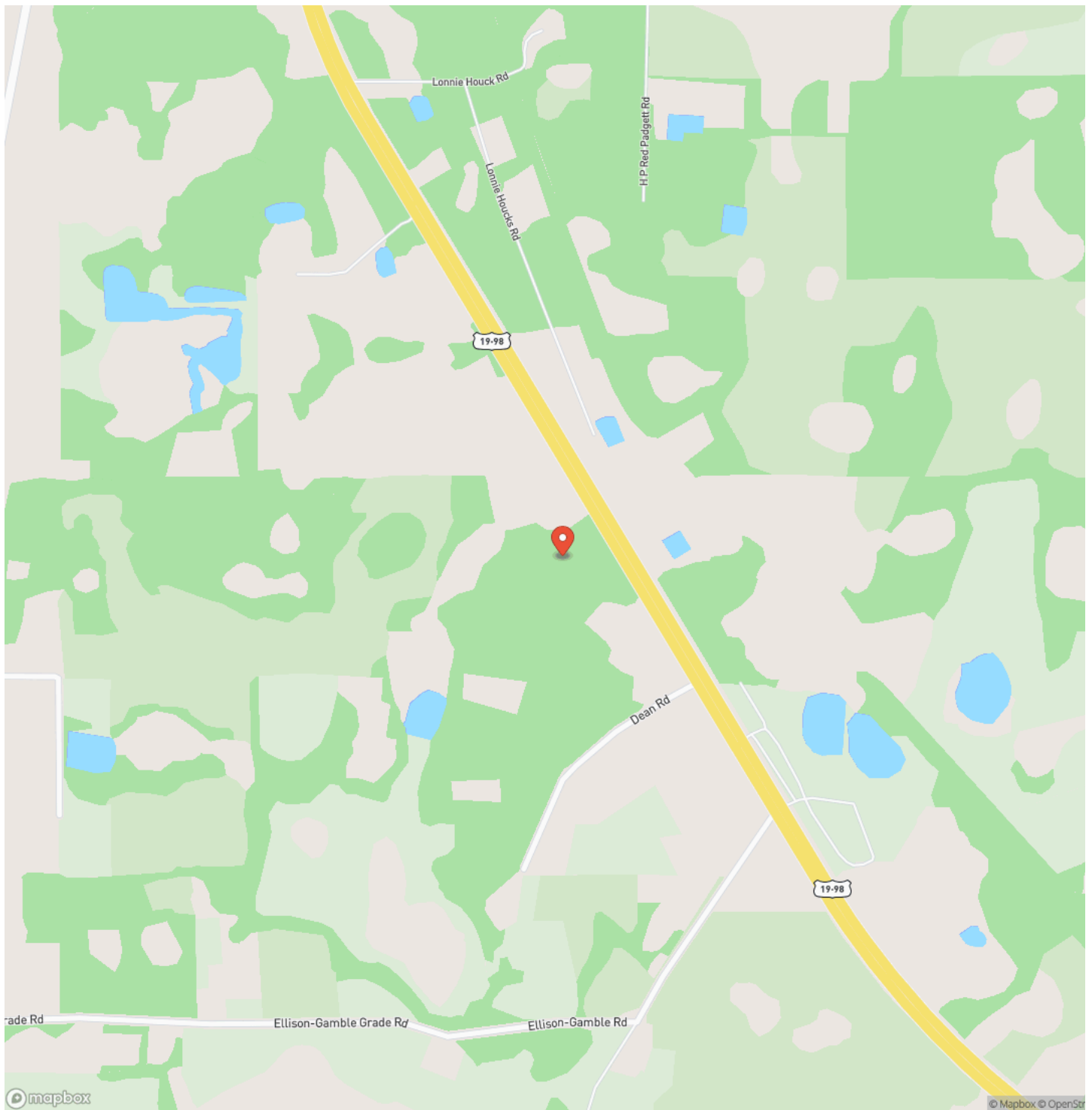
Beyond its commercial viability, this parcel offers **versatile flexibility**. It can serve as a **private homestead, agricultural tract, or future development holding**, blending open land with a mix of **Flood Zone X and A**. The 12 acres provide room for **custom construction, workshops, or small-scale farming**, with no HOA or deed restrictions limiting your plans.

Taylor County's continued growth and expanding corridor along Highway 19 make this an exceptional opportunity for investors or entrepreneurs looking for **land with immediate exposure and long-term potential**. Whether your vision is **business development, residential use, or both**, this property delivers the location and versatility to make it happen.

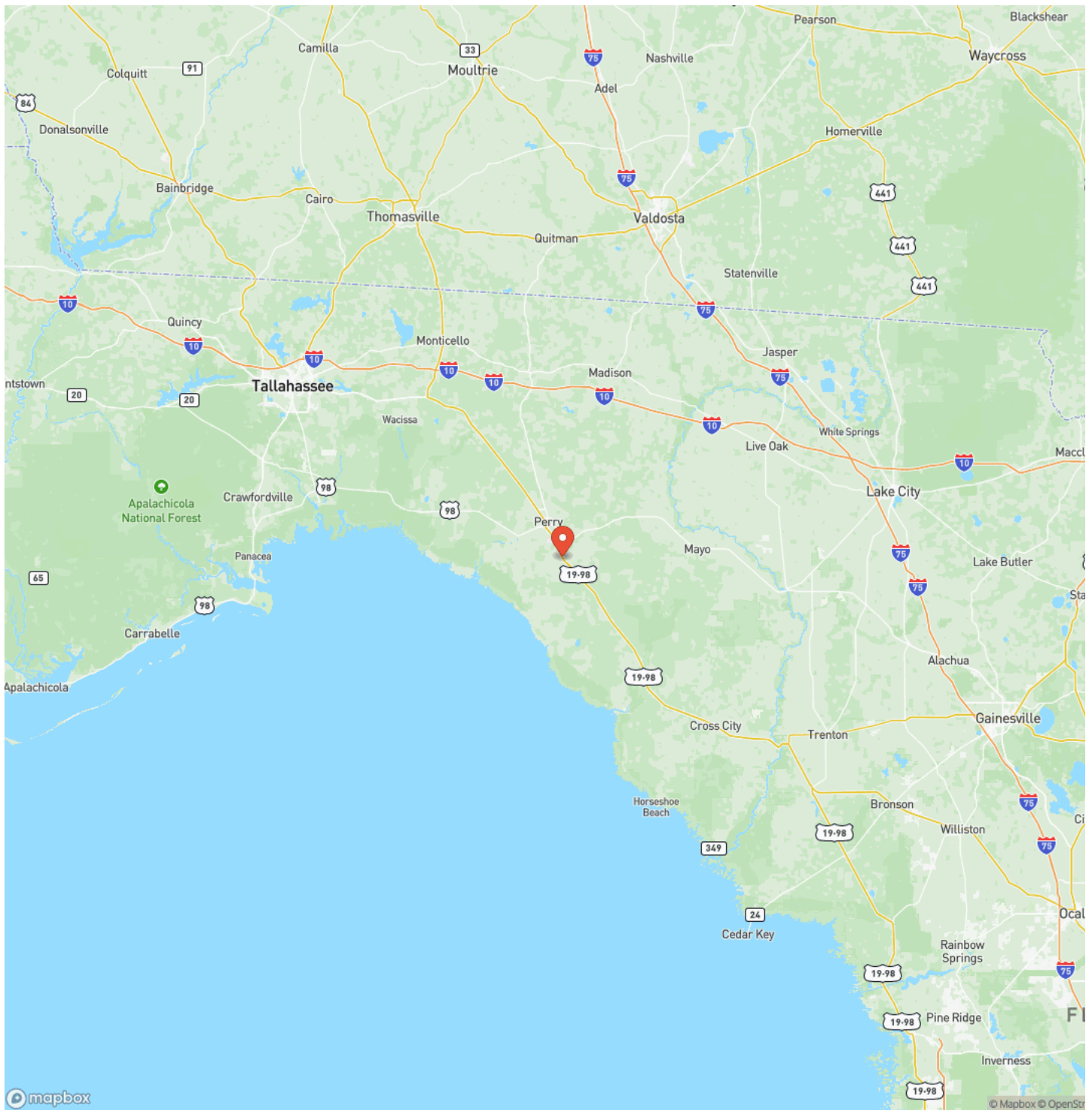
Potential Commercial 12 AC Taylor County
Perry, FL / Taylor County



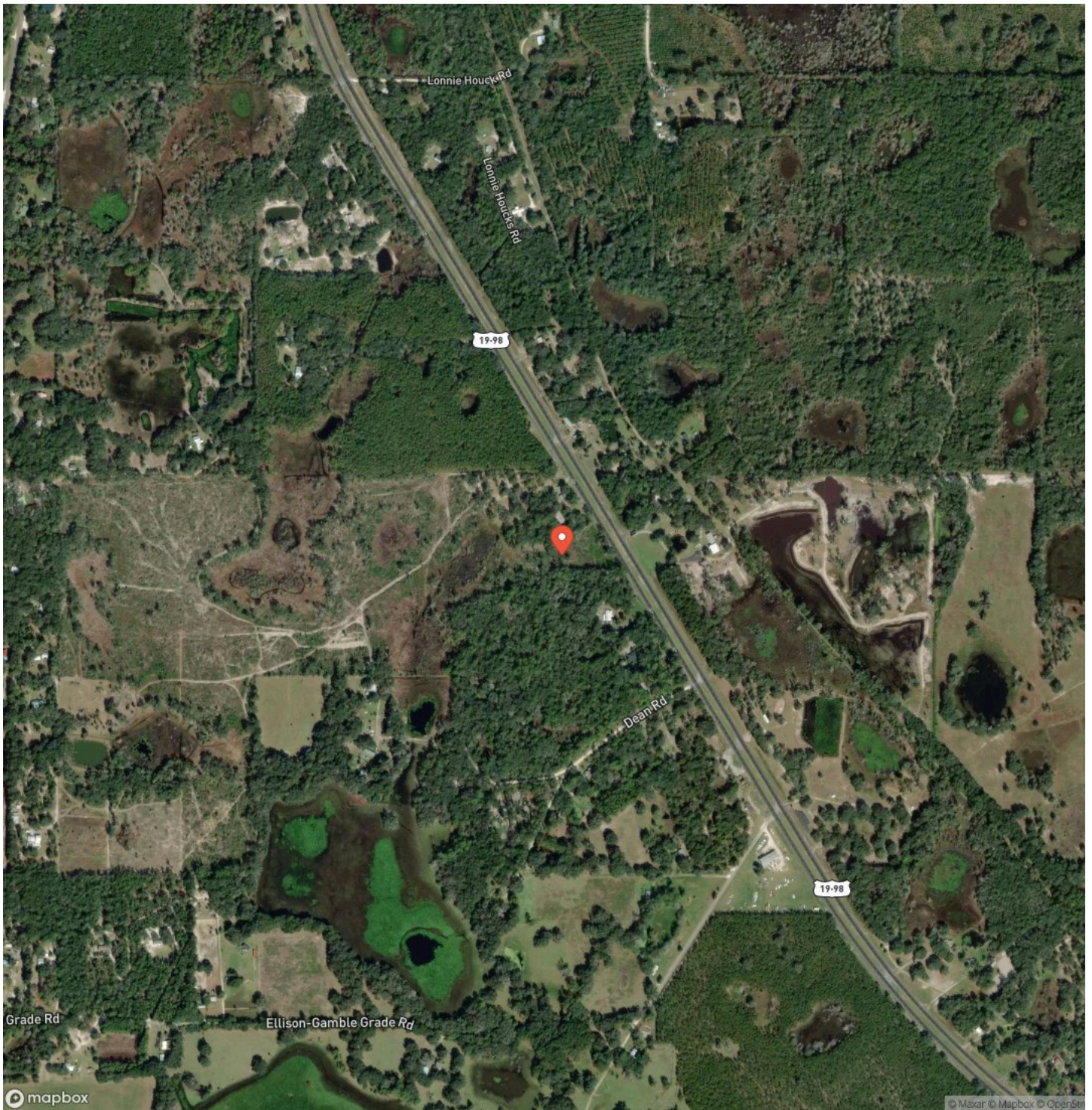
Locator Map



Locator Map



Satellite Map



DISCLAIMERS

Information in this brochure is provided solely for information purposes and does not constitute an offer to sell or advertise real estate outside the states in which broker or agent licensed. The information presented has been obtained from sources deemed to be reliable, but is not guaranteed or warranted by the agent, broker, or the sellers of these properties. This offering is subject to errors, omissions, prior sale, price change, correction or withdrawal from the market without notice. All references to age, square footage, income, expenses, acreage, carrying capacity, and land classification, etc. are approximate. Prospective buyers are chargeable with and expected to conduct their own independent investigation of the information and the property and to rely only on those results. Sellers reserve the right to accept or reject any and all offers without liability to any buyer or cooperating broker.

Maps are provided for illustration purposes only, the accuracy is not warranted. Parcels on interactive maps are not adjusted to match aerial backgrounds. This information is for reference purposes only and is not a legal document. Data maps contain errors. The seller and seller's agent are making known to all potential buyers that there may be variations between the location of the existing fence lines and the legal description of the deeded property. Seller and seller's agent make no warranties with regard to the location of the fence lines in relationship to the deeded property lines, nor does the Seller make any warranties or representations with regard to the specific acreage contained within the fenced property lines. Seller is selling the property in an "as is" condition, which includes the location of the fences as they exist. Boundaries shown on the accompanying maps are approximate, based on county parcel data. The maps are not to scale. The accuracy of the maps is not guaranteed. Prospective buyers are encouraged to verify fence lines, deeded property lines and acreages using a licensed surveyor at their own expense.

Mossy Oak Properties Southern Land & Homes, LLC
145 NW Cantey Avenue
Madison, FL 32340
(850) 973-2200
MossyOakProperties.com
