

Earlton - 5 AC
Vac NE County Road 1469
Earleton, FL 32631

\$70,500
5± Acres
Alachua County



Earlton - 5 AC
Earlton, FL / Alachua County

SUMMARY

Address

Vac NE County Road 1469

City, State Zip

Earlton, FL 32631

County

Alachua County

Type

Recreational Land, Undeveloped Land

Latitude / Longitude

29.724219 / -82.106176

Taxes (Annually)

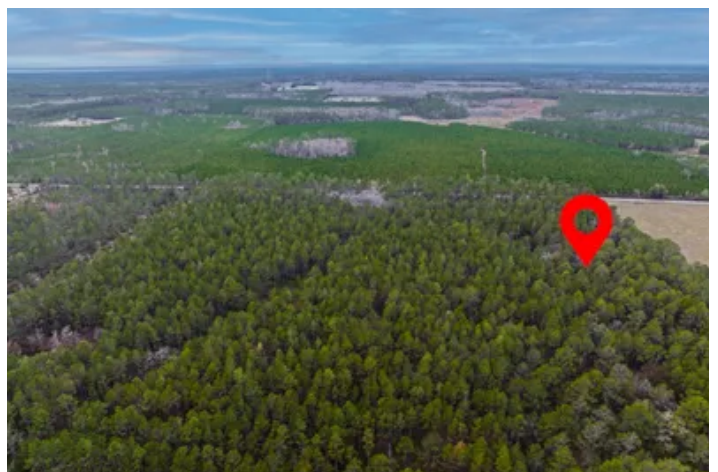
\$1,500

Acreage

5

Price

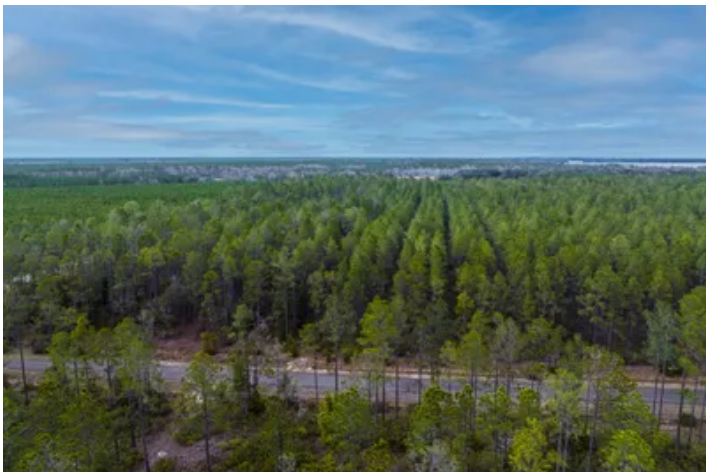
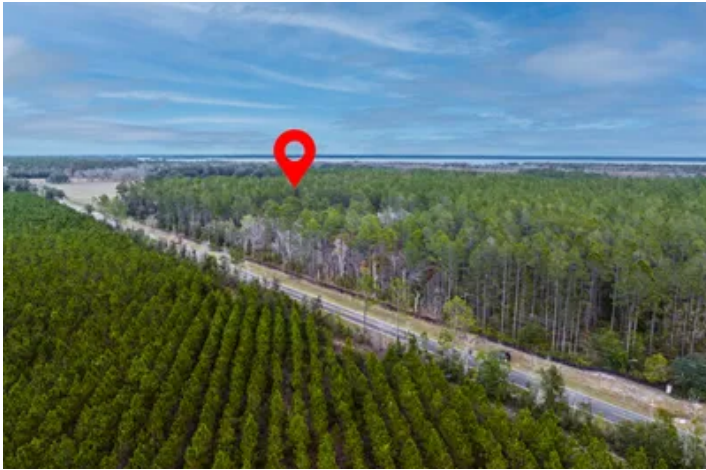
\$70,500



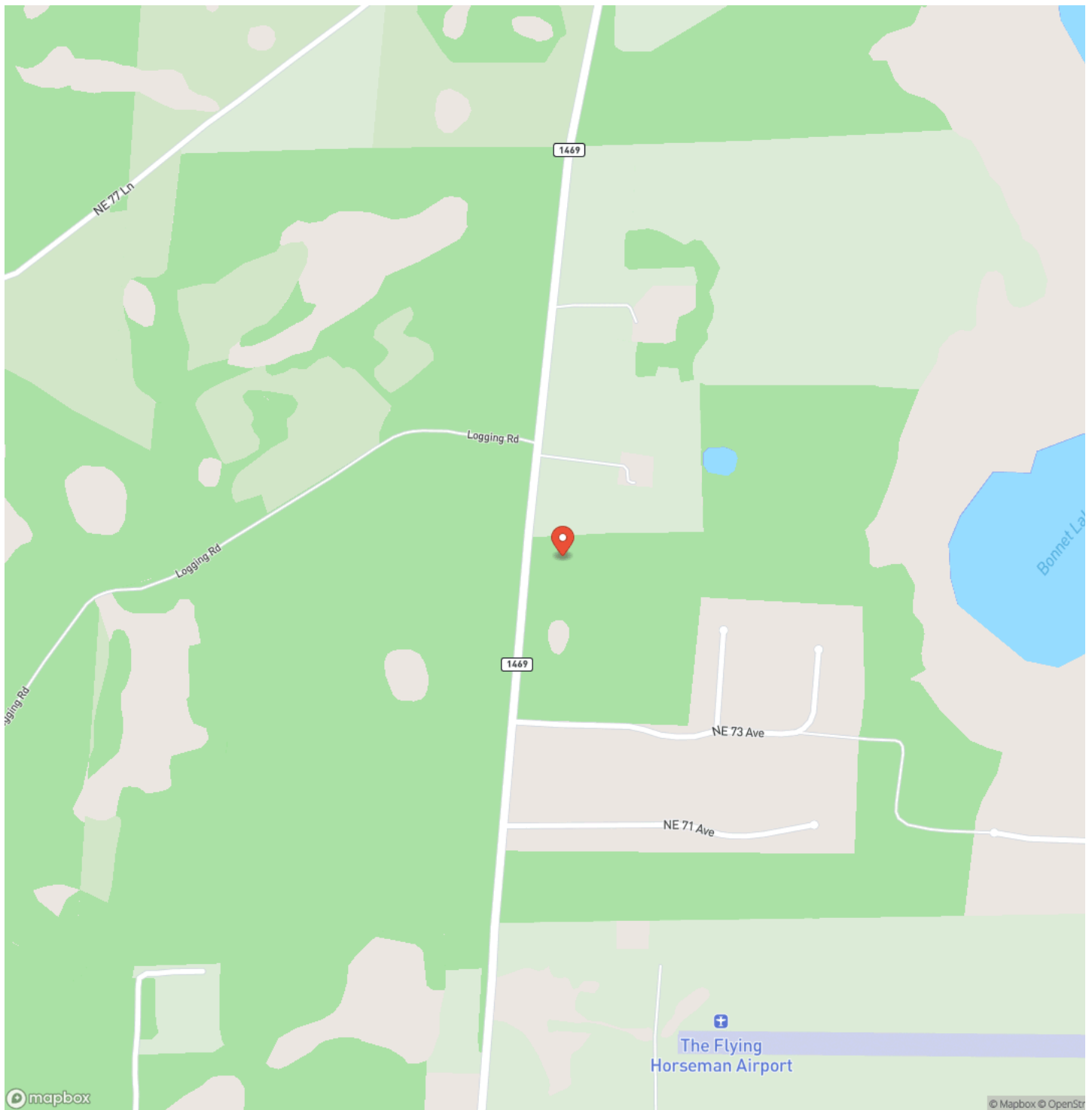
PROPERTY DESCRIPTION

Discover the perfect blend of privacy, nature, and opportunity with this 5-acre wooded parcel located in the highly desirable and rapidly growing Earlton area of Alachua County, Florida. Surrounded by mature trees and peaceful rural surroundings, this property offers an ideal setting for a future homesite, investment, or recreational retreat. The land provides a beautiful natural landscape with numerous options for creating your own private getaway. Whether you're planning a custom build, establishing a homestead, or securing land in an up-and-coming growth corridor, this parcel offers exceptional flexibility and long-term potential. An added bonus: an additional 15 acres adjacent to this property is also available, offering the rare chance to expand your footprint or assemble a larger estate parcel in this sought-after location. Conveniently situated just minutes from Lakes Santa Fe and Alto, and an easy drive to Gainesville, Melrose, Hawthorne, and area amenities, this location provides the perfect balance of rural living with convenient access to shopping, dining, schools, and recreation. A prime opportunity to own acreage in one of North Florida's most promising and fast-growing regions. Buyer to verify all details, zoning, utilities, and building requirements with city or county municipalities.

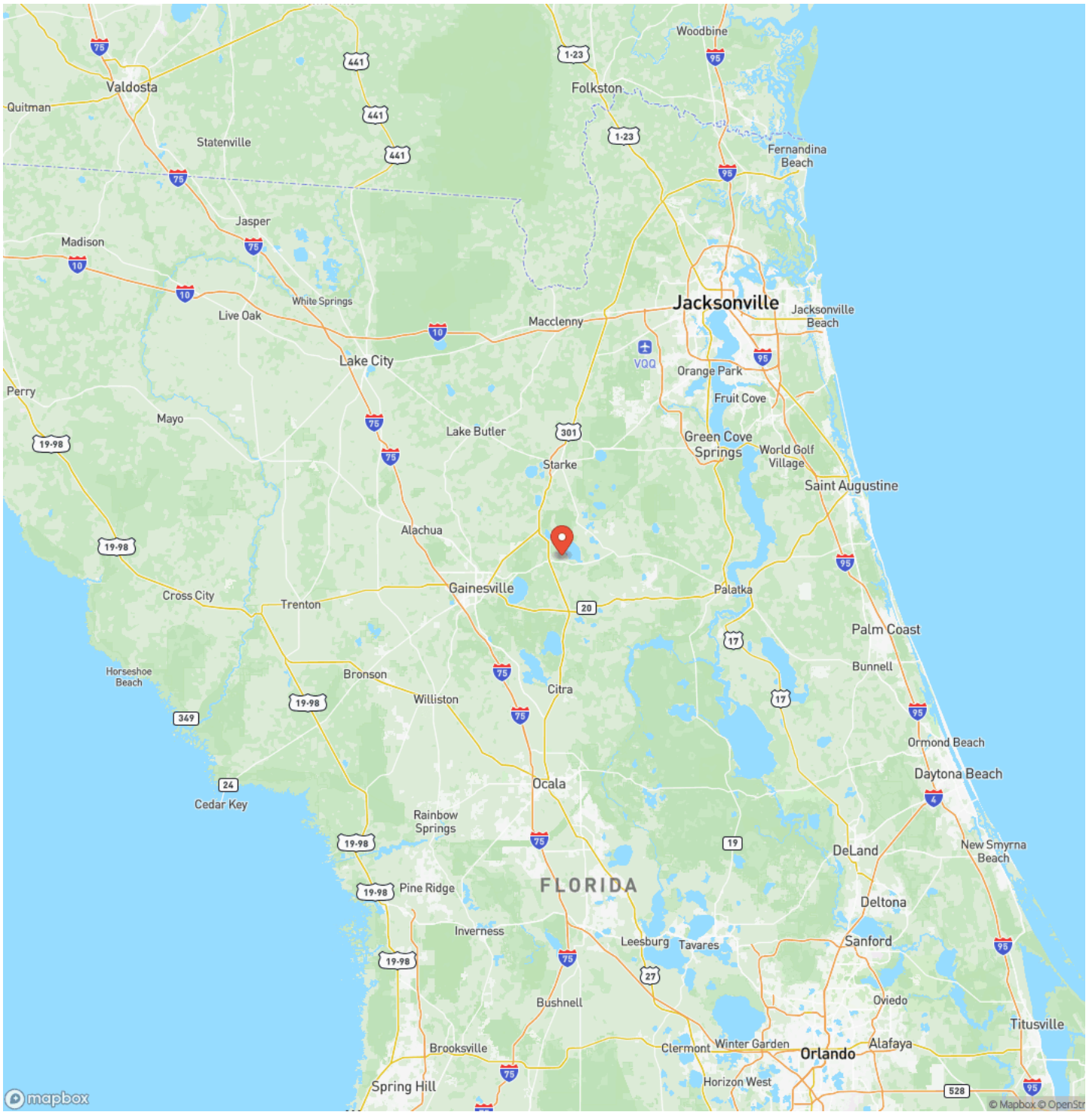
Earlton - 5 AC
Earleton, FL / Alachua County



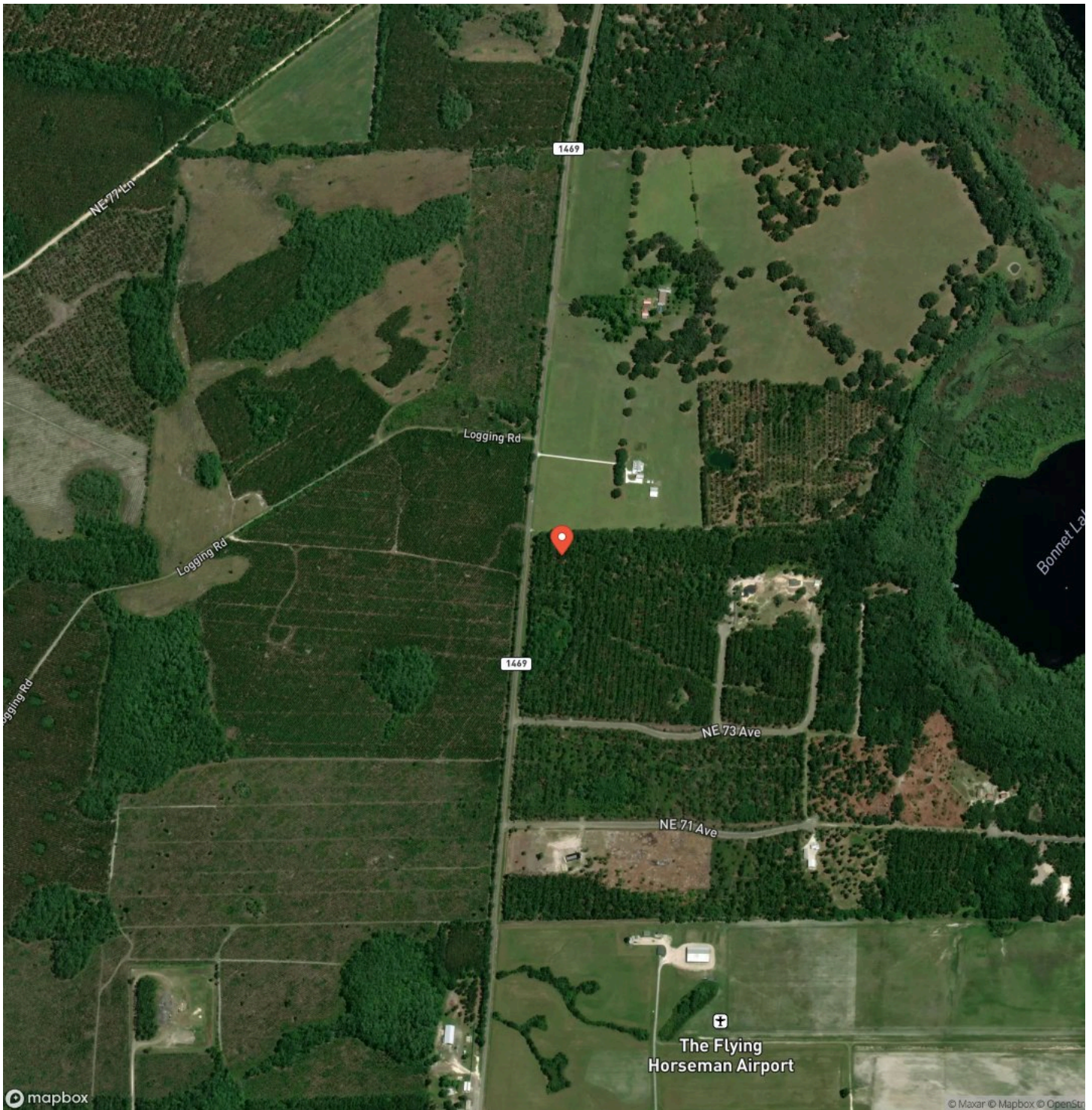
Locator Map



Locator Map



Satellite Map



DISCLAIMERS

Buyer to verify all details, zoning, utilities, and building requirements with city or county municipalities.



Mossy Oak Properties Southern Land & Homes, LLC
145 NW Cantey Avenue
Madison, FL 32340
(850) 973-2200
<https://mossyoakproperties.com/>

