

Improved 1-acre parcel with a container home  
391 NE Park Ave  
Mayo, FL 32066

**\$109,900**  
1± Acres  
Lafayette County



**Improved 1-acre parcel with a container home  
Mayo, FL / Lafayette County**

**SUMMARY**

**Address**

391 NE Park Ave

**City, State Zip**

Mayo, FL 32066

**County**

Lafayette County

**Type**

Recreational Land

**Latitude / Longitude**

30.090261 / -83.166243

**Taxes (Annually)**

\$324

**Acreage**

1

**Price**

\$109,900



## Improved 1-acre parcel with a container home Mayo, FL / Lafayette County

---

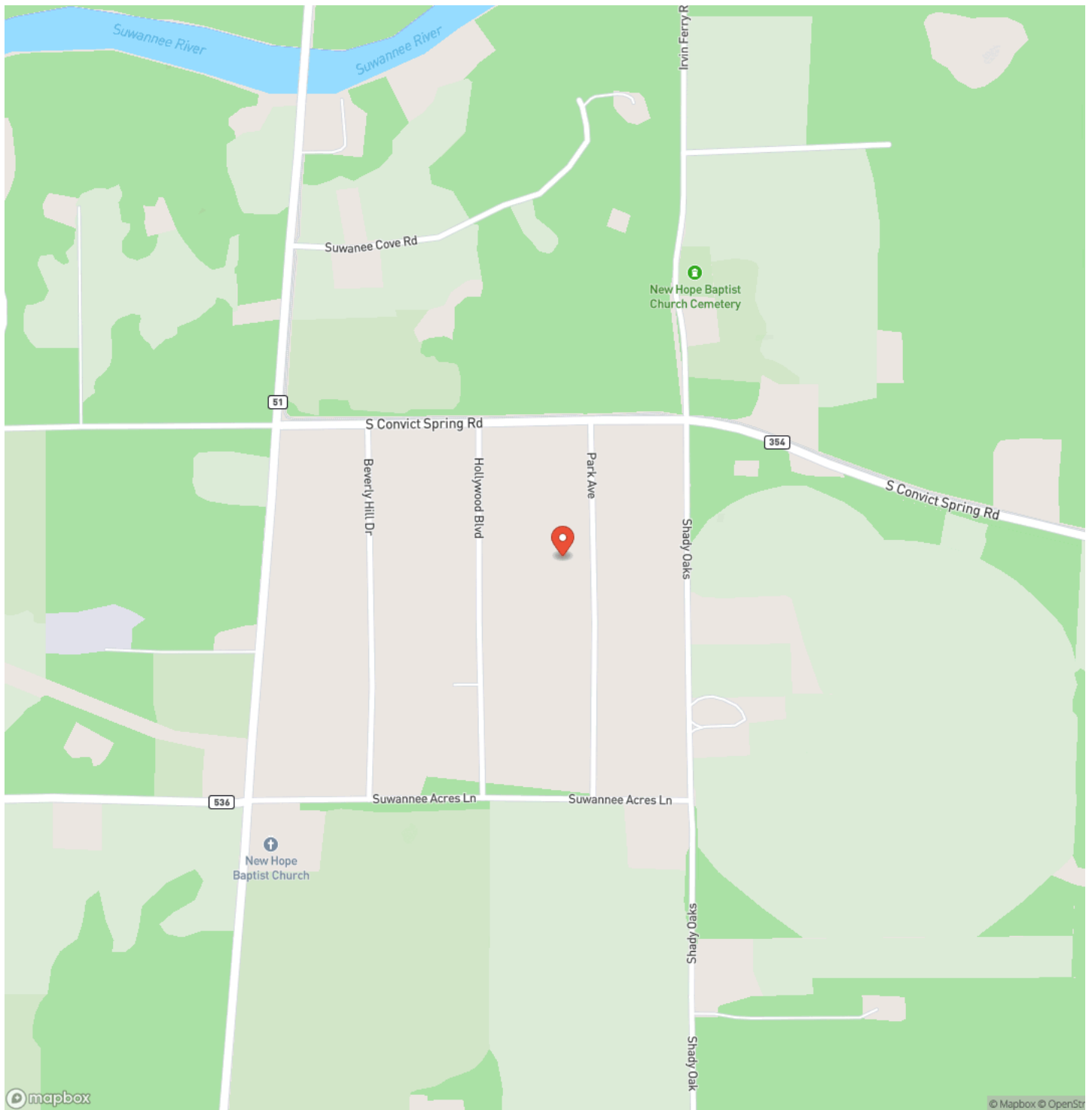
### **PROPERTY DESCRIPTION**

Escape to the Suwannee with this unique 1-acre improved property just 2 minutes from the Suwannee River boat ramp. Set up for immediate enjoyment, the property features a fully equipped insulated ex-reefer container home with a stainless steel interior and thoughtful remodel, offering a functional and comfortable retreat for weekends, seasonal use, or a basecamp for river adventures. Inside, the container home includes a shower, compost toilet, TV, stainless table, couch/bed, shelving, and electric service with 120V AC and 12V DC RV capability. The property is further improved with an existing well, septic system, established electric, RV hookups, and a carport sized for RV parking, making it a rare ready-to-use setup with valuable infrastructure already in place. An attached shed plus interior and exterior storage provide added convenience for gear, tools, and supplies. Whether you're looking for a private getaway, a fishing retreat, or a versatile recreational property close to the water, this one offers a hard-to-find combination of location, utility, and character in a beloved Suwannee River area. Buyer to verify all details, zoning, flood zone, and property use with county and local authorities.

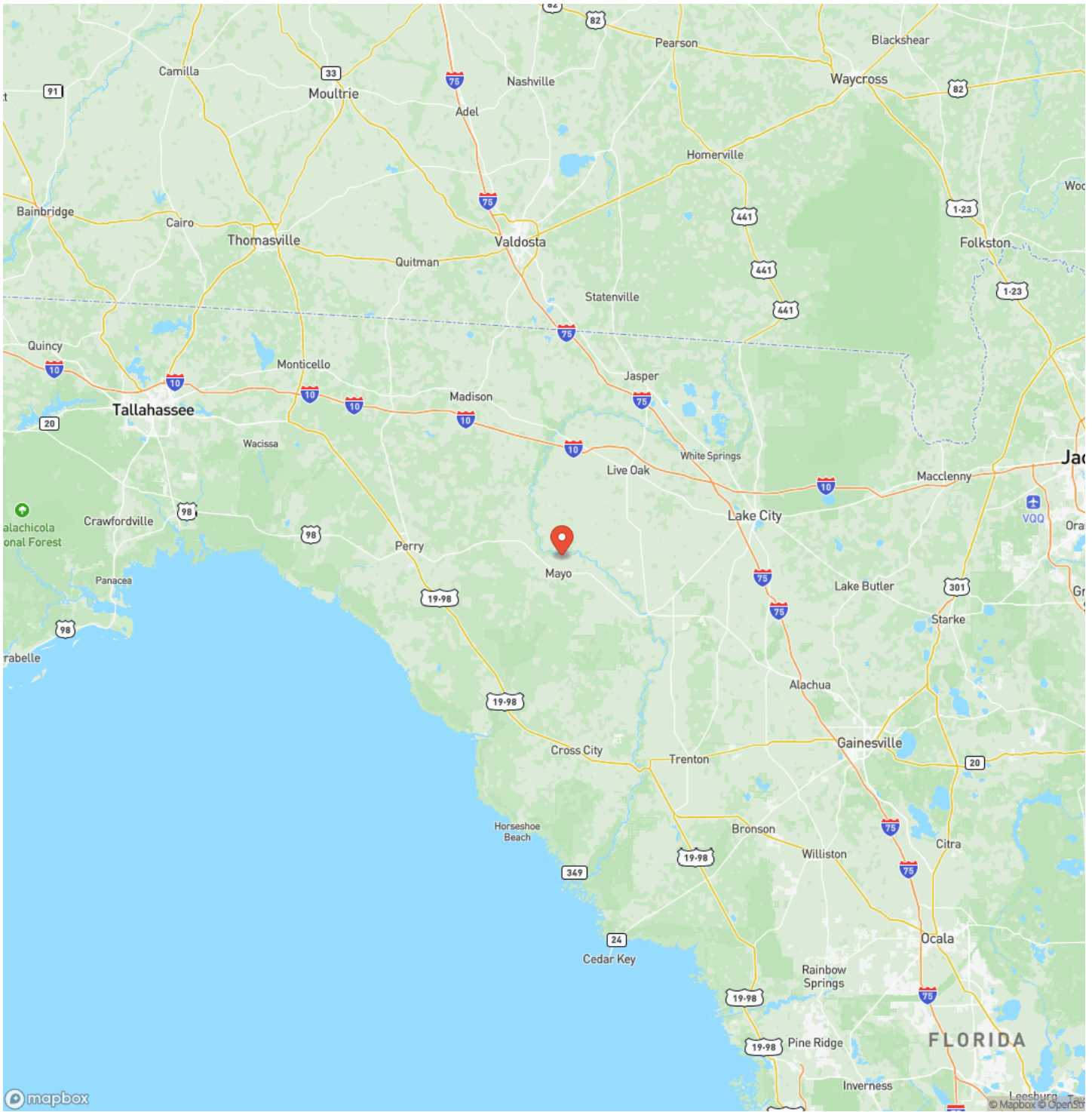
Improved 1-acre parcel with a container home  
Mayo, FL / Lafayette County



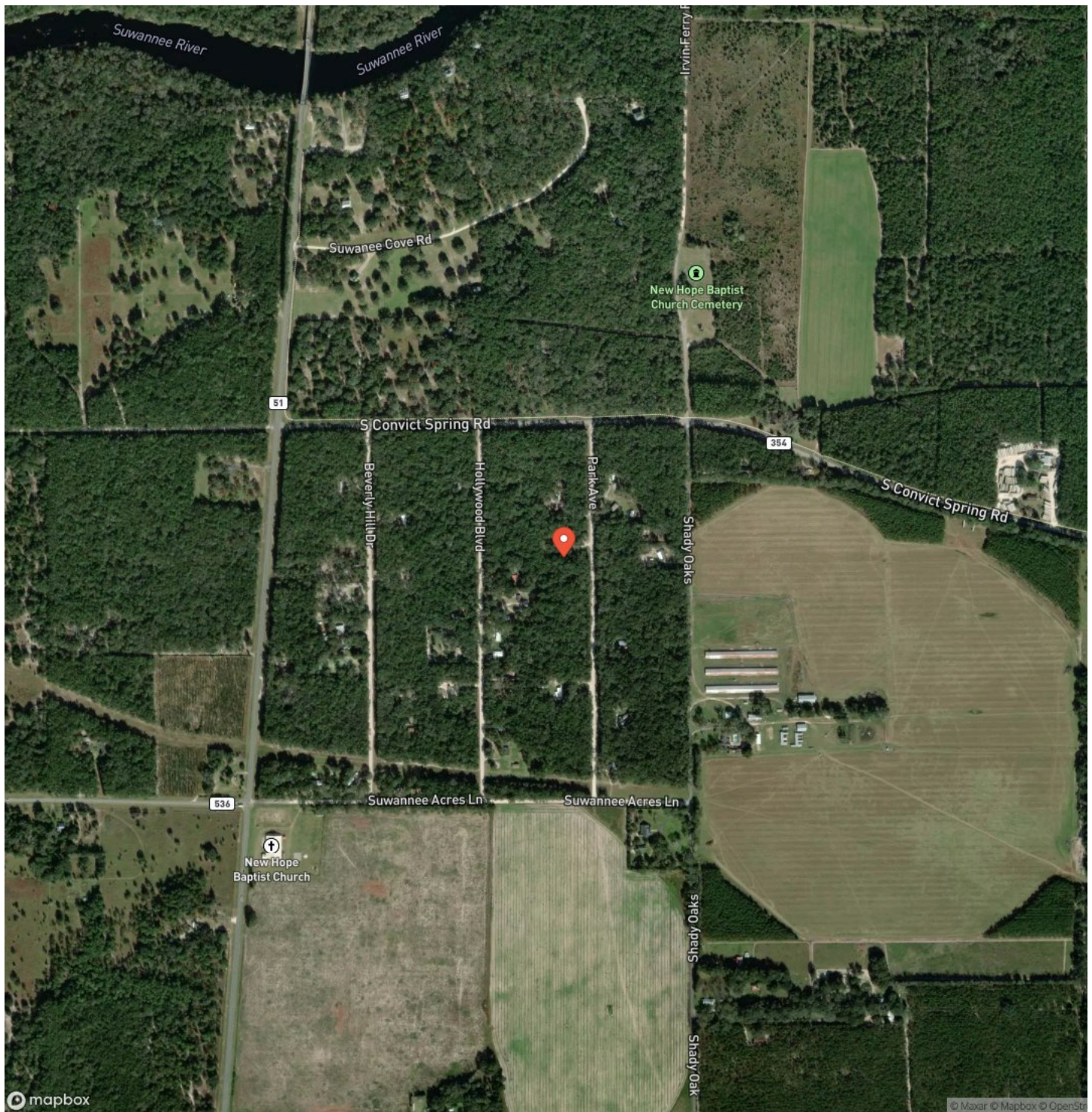
## Locator Map



# Locator Map



## Satellite Map







**DISCLAIMERS**

Buyer to verify all details, zoning, flood zone, and property use with county and local authorities.



---

**Mossy Oak Properties Southern Land & Homes, LLC**  
145 NW Cantey Avenue  
Madison, FL 32340  
(850) 973-2200  
<https://mossyoakproperties.com/>

---

