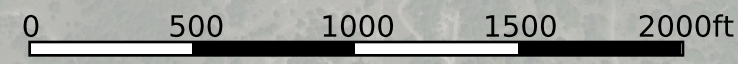
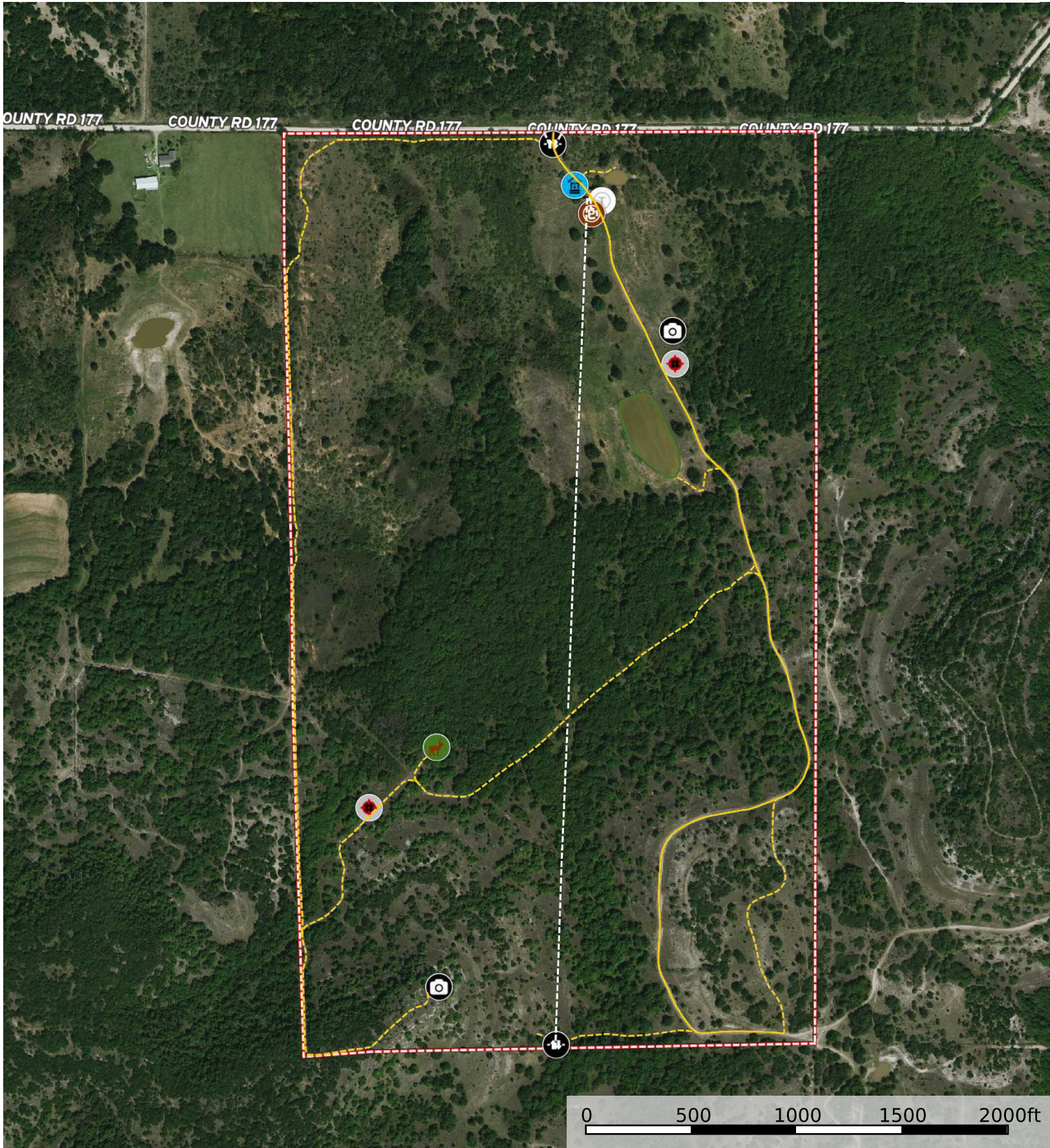


**Bret Polk**  
P: (254) 965-0349      [bret@hrcranch.com](mailto:bret@hrcranch.com)

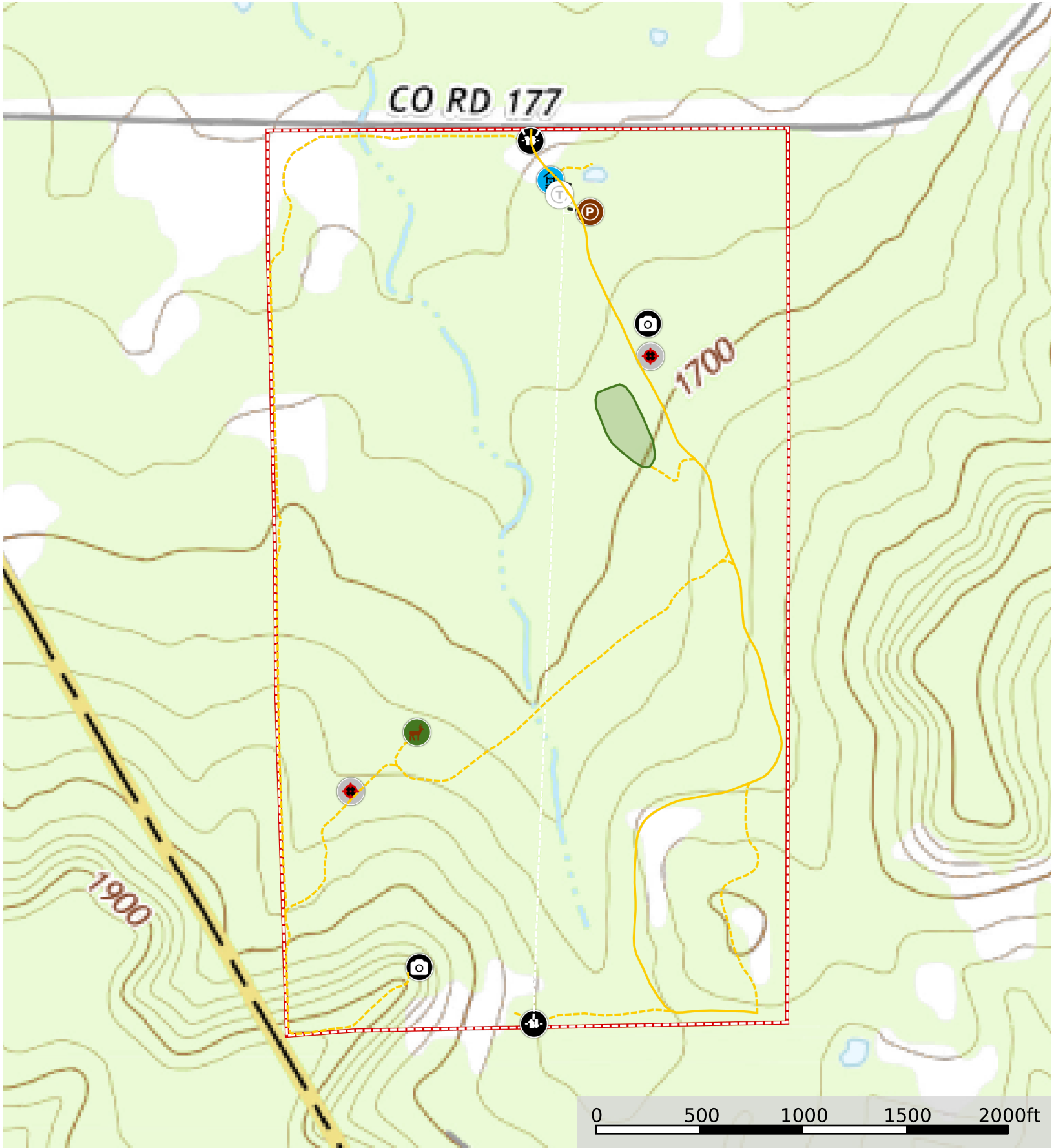


The information contained herein was obtained from sources deemed to be reliable.

MapRight Services makes no warranties or guarantees as to the completeness or accuracy thereof.



- Photo Point
- Pens
- Trough
- Well
- Blind
- Feeder
- Gate
- Road / Trail
- Primary Road
- Fence
- Food Plots
- Boundary



- Photo Point
- Pens
- Trough
- Well
- Blind
- Feeder
- Gate
- Road / Trail
- Primary Road
- Fence
- Food Plots
- Boundary