

Uncover the Possibilities on 4.5 Acres in Neodesha,
Kansas!
1405 N 19th
Neodesha, KS 66757

\$55,000
4.500± Acres
Wilson County



Uncover the Possibilities on 4.5 Acres in Neodesha, Kansas!

Neodesha, KS / Wilson County

SUMMARY

Address

1405 N 19th

City, State Zip

Neodesha, KS 66757

County

Wilson County

Type

Residential Property

Latitude / Longitude

37.432759 / -95.700826

Taxes (Annually)

309

Dwelling Square Feet

1170

Bedrooms / Bathrooms

3 / 1

Acreage

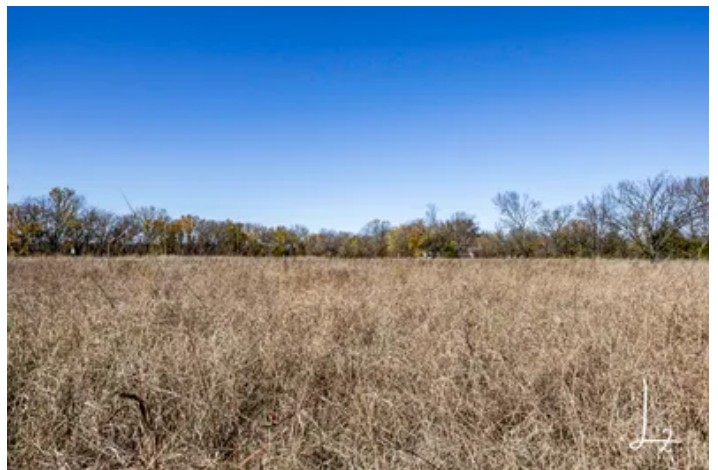
4.500

Price

\$55,000

Property Website

<https://l2realtyinc.com/property/uncover-the-possibilities-on-4-5-acres-in-neodesha-kansas-wilson-kansas/67553/>



Uncover the Possibilities on 4.5 Acres in Neodesha, Kansas!

Neodesha, KS / Wilson County

PROPERTY DESCRIPTION

Welcome to a property brimming with potential and ready for your creative vision! Spanning 4.5 expansive acres, this listing features a house that offers a fresh start with a solid foundation and plenty of room to make it your own. The seller has already begun the remodel process, with the walls stripped down, creating a blank canvas for your ideas to take shape. New electric service has been brought to the property along with a new breaker box. Water is also on so this place just needs a remodel crew to come in and get to work.

Property Highlights:

- **Generous Acreage:** The 4.5-acre lot provides space for expansion, outdoor activities, or even future development projects. The possibilities are as vast as the land itself!
- **House with Solid Bones:** While the home faced challenges in the past, including a previous fire, the structure has proven its resilience. With the walls already removed, it's ready for your custom touches to breathe new life into its framework.
- **Endless Potential:** Whether you envision a cozy rural retreat, a family homestead, or a profitable investment property, this is your chance to bring your dream project to life.
- **Convenient Location:** Nestled in Neodesha, Kansas, this property offers the perfect balance of rural charm and accessibility. Enjoy the peace of countryside living while staying close to urban conveniences. Plus, take advantage of the local Promise program, which helps cover tuition costs for families in the area—a unique bonus for long-term residents!

Embrace the Opportunity:

The hard work of clearing the way has already begun, leaving you with a rare opportunity to finish this remodel exactly how you envision it. Whether you're an experienced investor or a homeowner ready to take on an exciting project, this property is waiting for you to make it shine.

Schedule a showing today to see the potential for yourself and start turning this 4.5-acre property into something truly remarkable. Don't wait—opportunities like this don't last long!

Property Highlights:

- **4.5 Acres of Possibilities:** Ample space for outdoor activities, expansion, or future development projects.
- **Solid Bones:** The house structure is sound, with walls already removed to give you a blank canvas for your remodel.
- **Remodel Started:** Seller has initiated the renovation process, making it easier for you to bring your vision to life.
- **Endless Potential:** Ideal for a rural retreat, family homestead, or investment property.
- **Convenient Location:** Located in Neodesha, Kansas, combining peaceful rural living with easy access to urban amenities.
- **Promise Program Perks:** Benefit from a unique tuition assistance program for families in the community.

Why This Property?

- Space to create a custom home or profitable venture.
- A fresh start with renovations already underway.

MORE INFO ONLINE:

L2realtyinc.com



- Perfect for investors or homeowners seeking a project with character and potential.

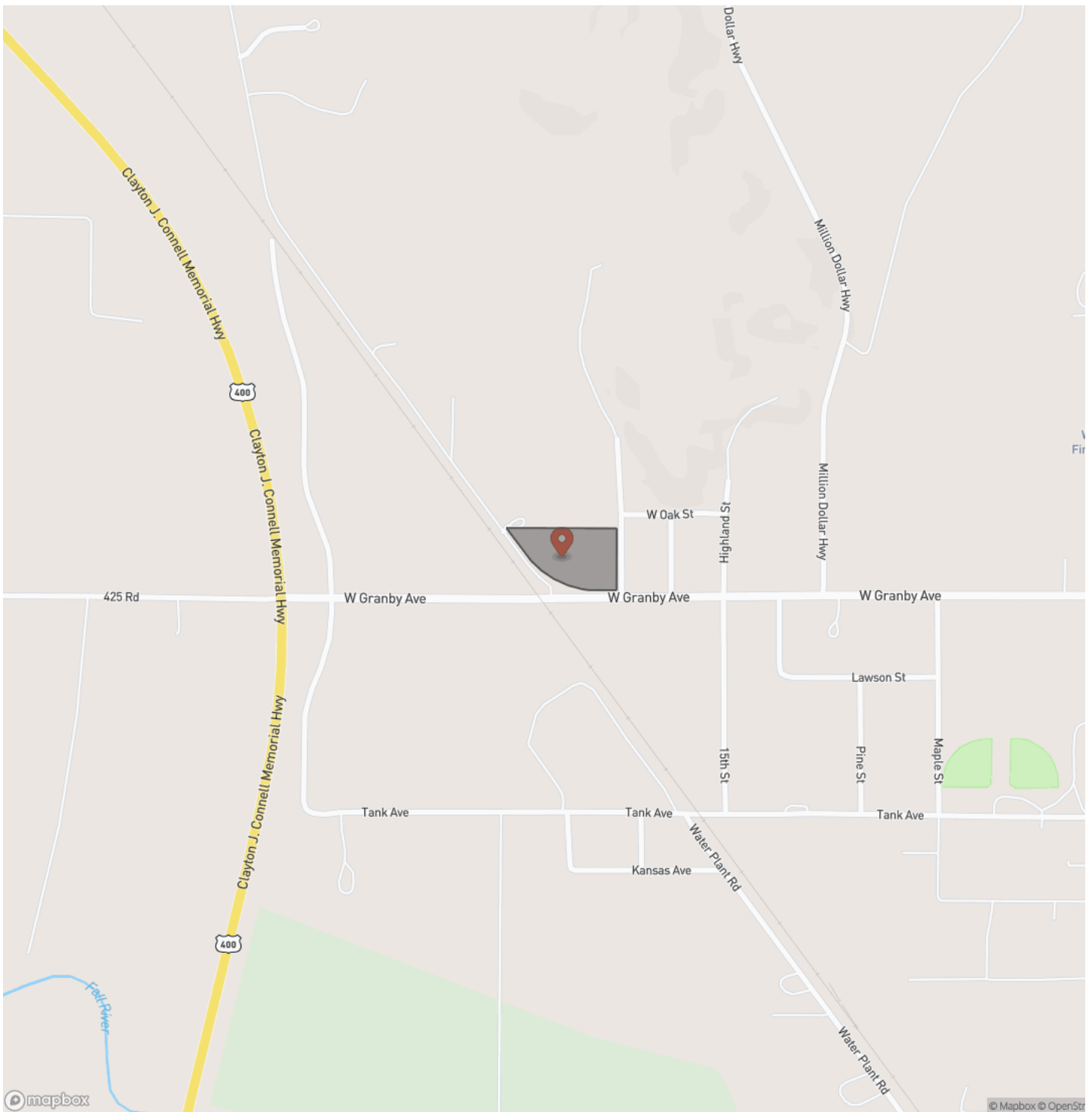
Seize this rare opportunity to transform 4.5 acres into your dream property!



Uncover the Possibilities on 4.5 Acres in Neodesha, Kansas!
Neodesha, KS / Wilson County

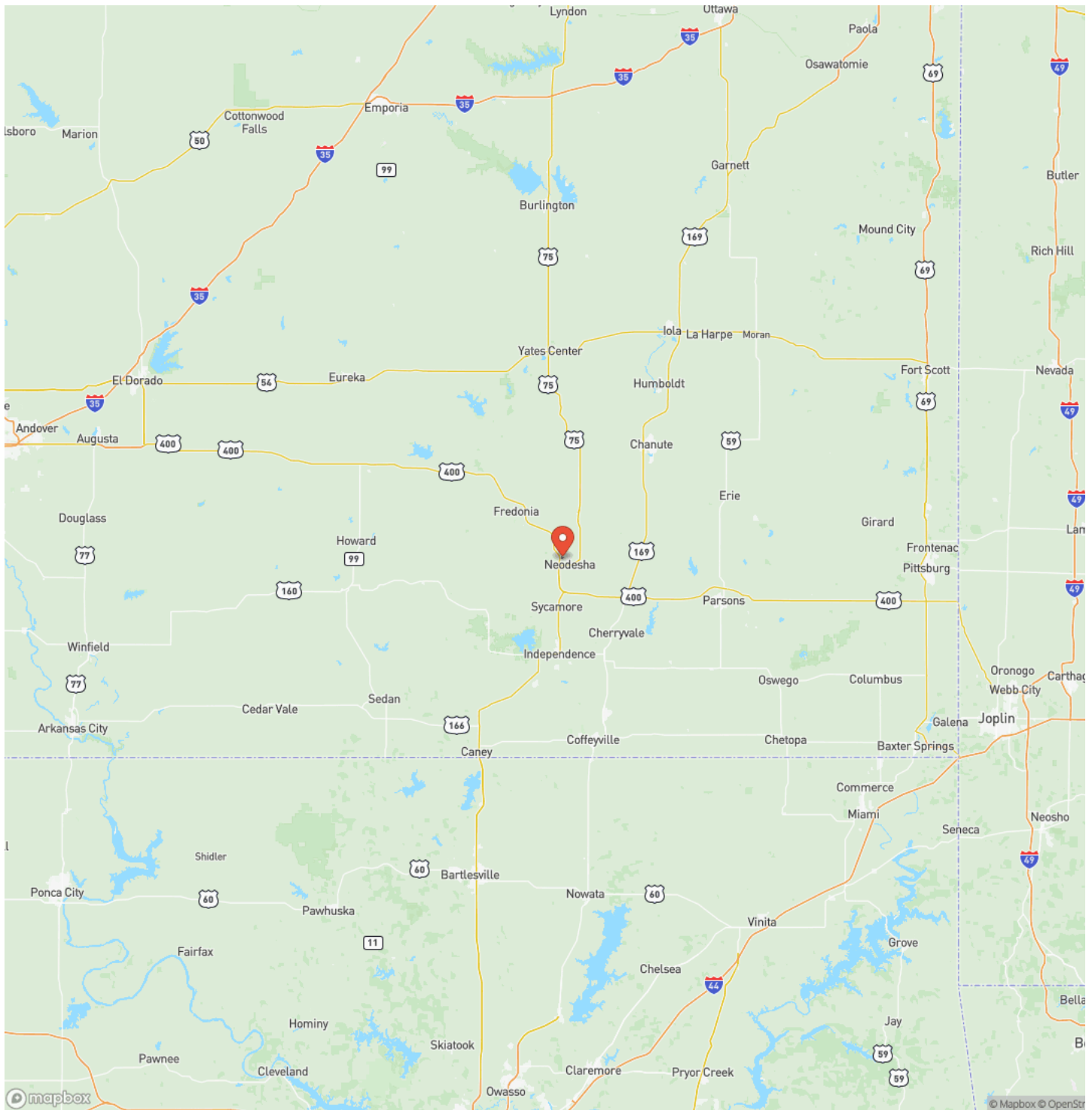


Locator Map



Uncover the Possibilities on 4.5 Acres in Neodesha, Kansas!
Neodesha, KS / Wilson County

Locator Map



Uncover the Possibilities on 4.5 Acres in Neodesha, Kansas!
Neodesha, KS / Wilson County

Satellite Map



Uncover the Possibilities on 4.5 Acres in Neodesha, Kansas! Neodesha, KS / Wilson County

LISTING REPRESENTATIVE

For more information contact:



Representative

Andrew Kattenberg

Mobile

(620) 313-0783

Office

(620) 313-0783

Email

andrew.kattenberg@gmail.com

Address

City / State / Zip

Cherryvale, KS 67335

NOTES

This image shows a blank sheet of white paper with horizontal ruling lines. The lines are evenly spaced and extend across the width of the page. There are no margins, text, or other markings on the paper.

This image shows a single sheet of white paper with horizontal ruling lines. The lines are evenly spaced and run across the width of the page. There are no margins, text, or other markings on the paper.



L2realtyinc.com

DISCLAIMERS

Information in this brochure is provided solely for information purposes and does not constitute an offer to sell or advertise real estate outside the states in which broker or agent licensed. The information presented has been obtained from sources deemed to be reliable, but is not guaranteed or warranted by the agent, broker, or the sellers of these properties. This offering is subject to errors, omissions, prior sale, price change, correction or withdrawal from the market without notice. All references to age, square footage, income, expenses, acreage, carrying capacity, and land classification, etc. are approximate. Prospective buyers are chargeable with and expected to conduct their own independent investigation of the information and the property and to rely only on those results. Sellers reserve the right to accept or reject any and all offers without liability to any buyer or cooperating broker.

Maps are provided for illustration purposes only, the accuracy is not warranted. Parcels on interactive maps are not adjusted to match aerial backgrounds. This information is for reference purposes only and is not a legal document. Data maps contain errors. The seller and seller's agent are making known to all potential buyers that there may be variations between the location of the existing fence lines and the legal description of the deeded property. Seller and seller's agent make no warranties with regard to the location of the fence lines in relationship to the deeded property lines, nor does the Seller make any warranties or representations with regard to the specific acreage contained within the fenced property lines. Seller is selling the property in an "as is" condition, which includes the location of the fences as they exist. Boundaries shown on the accompanying maps are approximate, based on county parcel data. The maps are not to scale. The accuracy of the maps is not guaranteed. Prospective buyers are encouraged to verify fence lines, deeded property lines and acreages using a licensed surveyor at their own expense.



L2 Realty, Inc - Land and Lifestyle Properties
4045B CR 3900
Independence, KS 67301
(620) 577-4487
L2realtyinc.com

