

Hidey Hole 13
N 12th St
Neodesha, KS 66757

\$50,000
12.700± Acres
Wilson County



Hidey Hole 13
Neodesha, KS / Wilson County

SUMMARY

Address

N 12th St

City, State Zip

Neodesha, KS 66757

County

Wilson County

Type

Undeveloped Land

Latitude / Longitude

37.438684 / -95.689834

Acreage

12.700

Price

\$50,000

Property Website

<https://l2realtyinc.com/property/hidey-hole-13-wilson-kansas/96890/>



Hidey Hole 13

Neodesha, KS / Wilson County

PROPERTY DESCRIPTION

Are you looking for that perfect little affordable piece of recreational ground? Well, here it is! With its location just outside of Neodesha, KS, access will be a breeze.

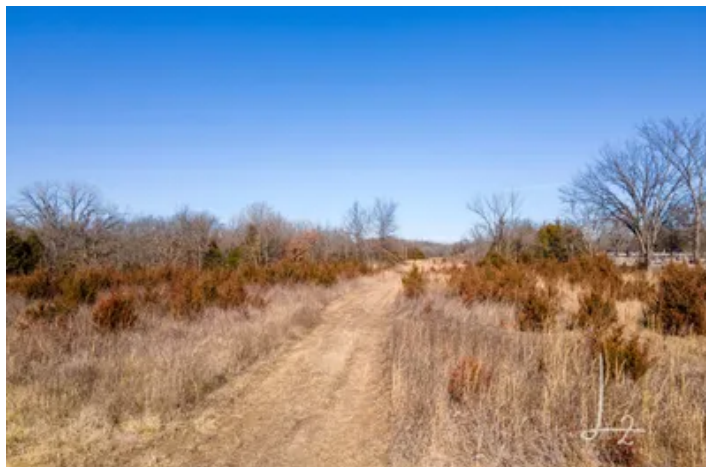
This property has a good history of quality whitetails and turkeys. The seller has a couple years of trail cam history of bucks ranging from 120-160 inches. Plus, it catches a lot of traffic from all the neighborhood deer. With rich bottoms across the road and cover all around, this property will sure to be a whitetail hub for the foreseeable future. It has room for food plots and plenty of big timber to hang stands from. Cover wise, it has standing grass, cedar thickets and big timber. For such a small acreage, it has everything needed to hunt quality deer every season.

It has gravel road frontage on the north side and an easement off the paved road on the east side. Water and electricity are close by and may be accessible with the county. If you would like to set up a personal showing, give Brian Helman (620)212-2027 a call today!

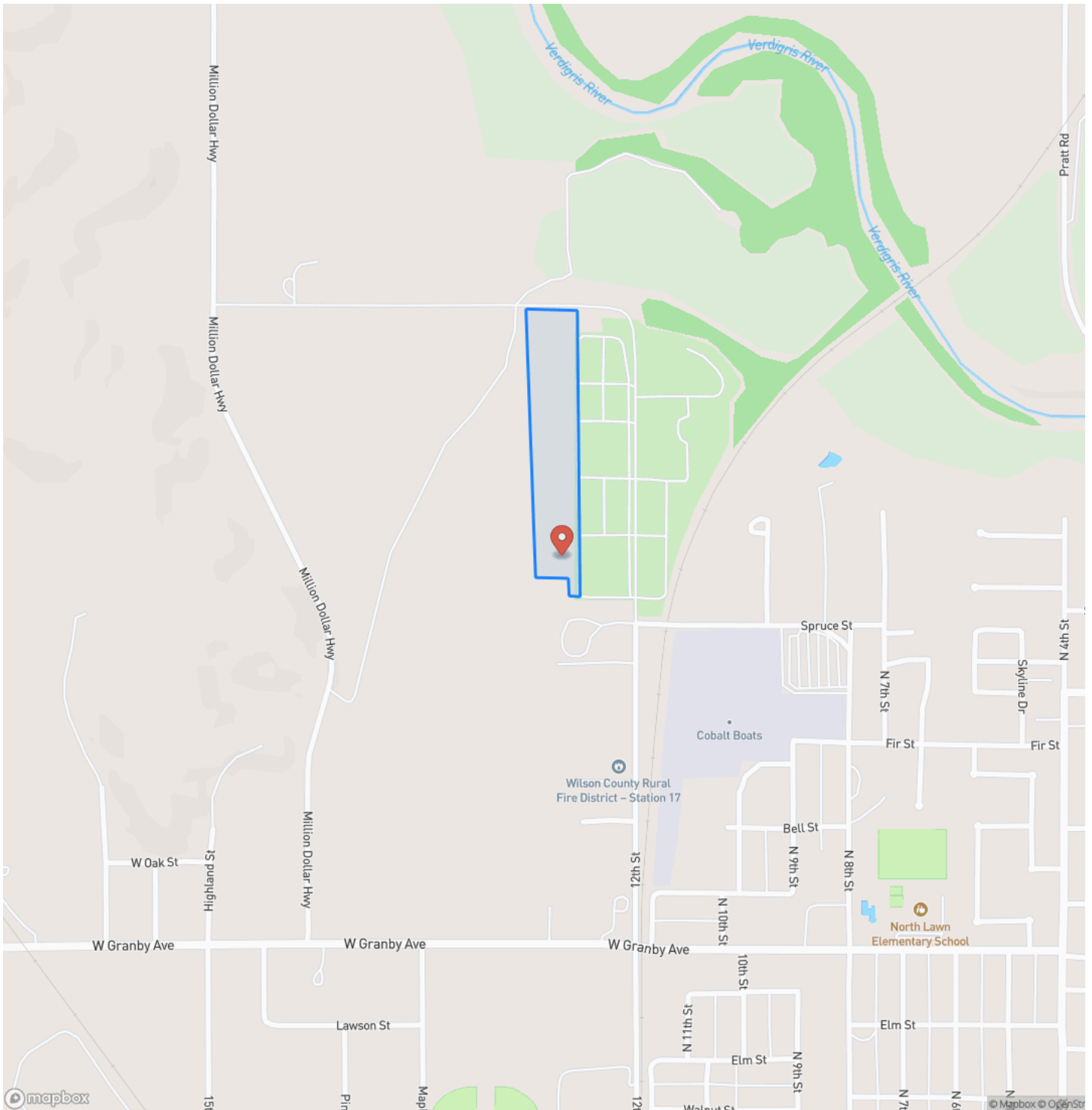
- Small acreage
- Multiple access points
- Quality buck history
- 2 minutes from Neodesha



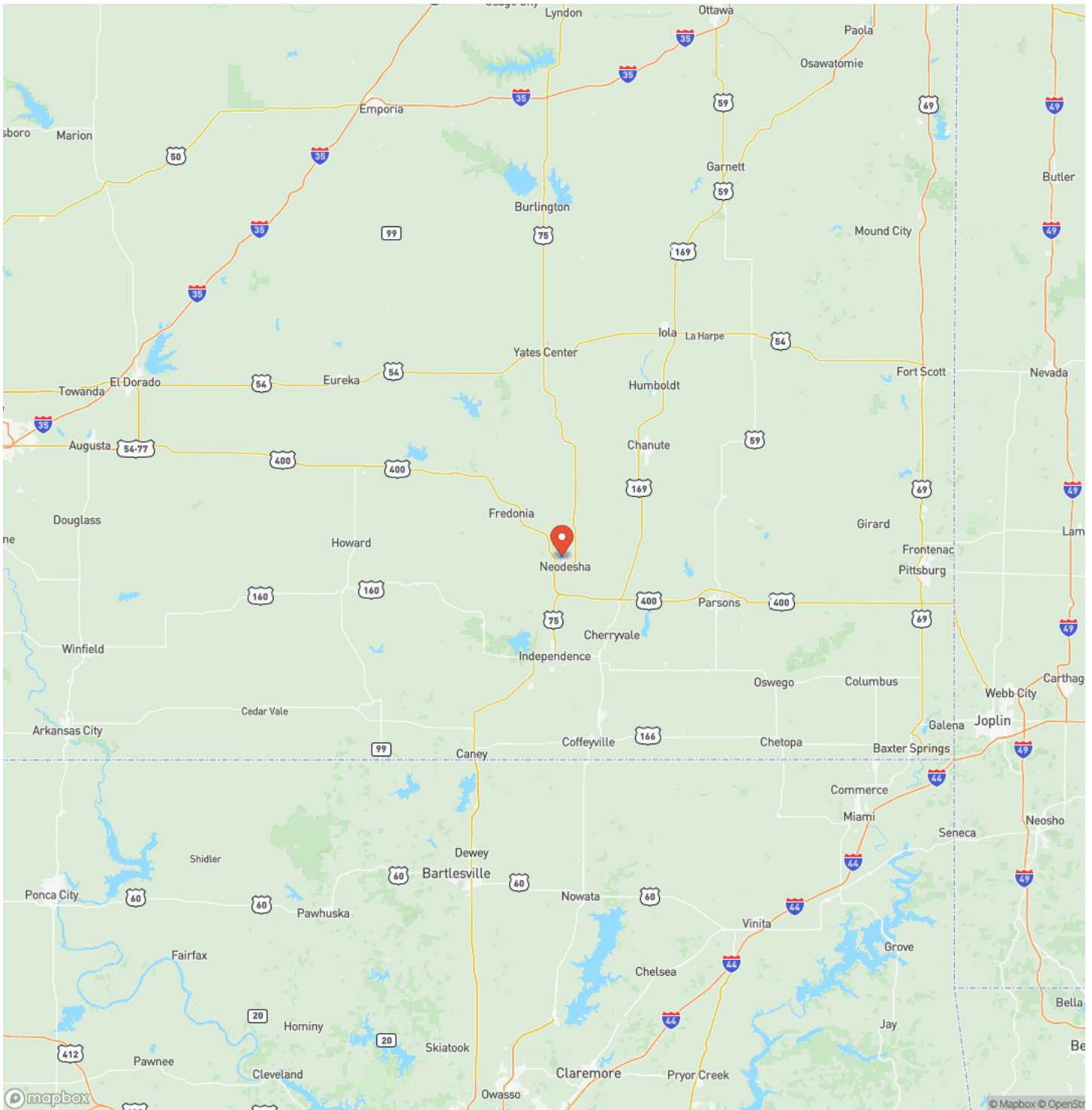
Hidey Hole 13
Neodesha, KS / Wilson County



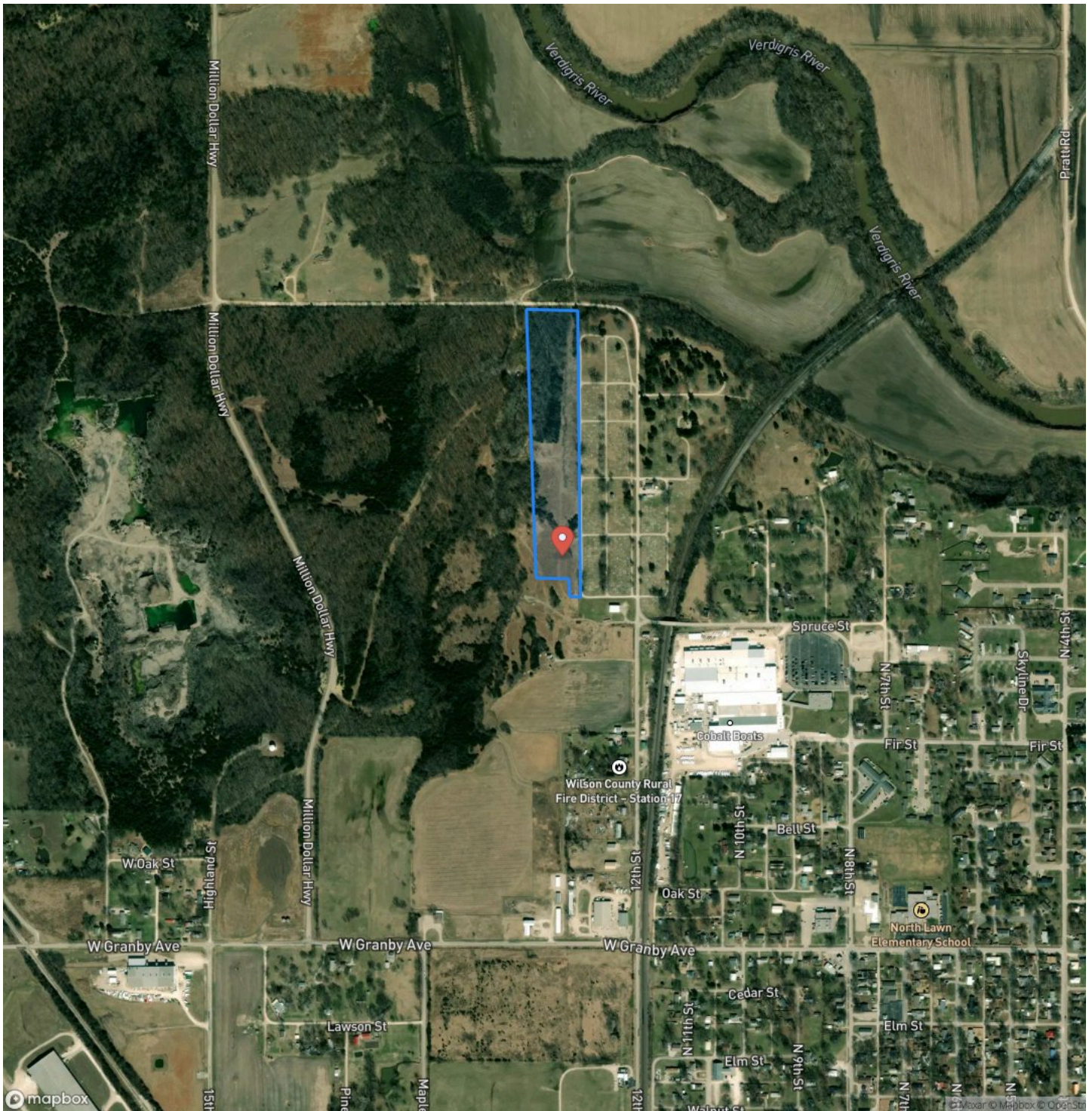
Locator Map



Locator Map



Satellite Map



Hidey Hole 13

Neodesha, KS / Wilson County

LISTING REPRESENTATIVE

For more information contact:



Representative

Brian Helman

Mobile

(620) 212-2027

Email

bhelman@L2realtyinc.com

Address

City / State / Zip

NOTES

[illegible]

This image shows a single sheet of white paper with horizontal ruling lines. The lines are evenly spaced and run across the width of the page. There are no margins, text, or other markings on the paper.



L2realtyinc.com

DISCLAIMERS

Information in this brochure is provided solely for information purposes and does not constitute an offer to sell or advertise real estate outside the states in which broker or agent licensed. The information presented has been obtained from sources deemed to be reliable, but is not guaranteed or warranted by the agent, broker, or the sellers of these properties. This offering is subject to errors, omissions, prior sale, price change, correction or withdrawal from the market without notice. All references to age, square footage, income, expenses, acreage, carrying capacity, and land classification, etc. are approximate. Prospective buyers are chargeable with and expected to conduct their own independent investigation of the information and the property and to rely only on those results. Sellers reserve the right to accept or reject any and all offers without liability to any buyer or cooperating broker.

Maps are provided for illustration purposes only, the accuracy is not warranted. Parcels on interactive maps are not adjusted to match aerial backgrounds. This information is for reference purposes only and is not a legal document. Data maps contain errors. The seller and seller's agent are making known to all potential buyers that there may be variations between the location of the existing fence lines and the legal description of the deeded property. Seller and seller's agent make no warranties with regard to the location of the fence lines in relationship to the deeded property lines, nor does the Seller make any warranties or representations with regard to the specific acreage contained within the fenced property lines. Seller is selling the property in an "as is" condition, which includes the location of the fences as they exist. Boundaries shown on the accompanying maps are approximate, based on county parcel data. The maps are not to scale. The accuracy of the maps is not guaranteed. Prospective buyers are encouraged to verify fence lines, deeded property lines and acreages using a licensed surveyor at their own expense.



L2 Realty, Inc - Land and Lifestyle Properties
4045B CR 3900
Independence, KS 67301
(620) 577-4487
L2realtyinc.com

