

**Quaint 1.5 Story Home with Shop Sitting on 1 Acre in
Parsons**
1000 Briggs Ave
Parsons, KS 67357

\$100,000
1.100± Acres
Labette County



Quaint 1.5 Story Home with Shop Sitting on 1 Acre in Parsons Parsons, KS / Labette County

SUMMARY

Address

1000 Briggs Ave

City, State Zip

Parsons, KS 67357

County

Labette County

Type

Residential Property

Latitude / Longitude

37.328871 / -95.250118

Dwelling Square Feet

1639

Bedrooms / Bathrooms

3 / 2

Acreage

1.100

Price

\$100,000

Property Website

<https://l2realtyinc.com/property/quaint-1-5-story-home-with-shop-sitting-on-1-acre-in-parsons-labette-kansas/42273/>



Quaint 1.5 Story Home with Shop Sitting on 1 Acre in Parsons Parsons, KS / Labette County

PROPERTY DESCRIPTION

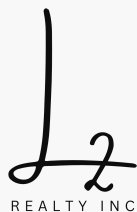
Won't you come in? This charming 1 ½ story, old style home is conveniently located at the edge of town in Parsons, KS. Built in 1915, this gem offers endless potential for those with a creative eye. With 1639 sq ft of living space, this home features 3 bedrooms, with 2 located downstairs and 1 tucked away upstairs for added privacy.

As you step inside, newer laminate flooring guides your path through the main living areas, creating a warm and inviting atmosphere throughout. Large windows in the main living space brighten the home. The kitchen boasts stainless steel appliances. A bathroom is located at the back and has shared access from the kitchen to the primary bedroom. A door in the primary bedroom leads to a cellar underneath the home. Here you will find the washer and dryer, which the current owners are pleased to include as part of the sale. Upstairs you will discover a large area that is waiting for you to make it your own. There is a full bath that will need finishing touches. With a little work, this space would make a fabulous primary suite.

Situated on a generous 1-acre lot, this property offers ample outdoor space for gardening, entertaining, or keeping your four-legged family members safe. The deck provides the perfect spot to unwind after a long day. With a little TLC, this space can be transformed into your personal oasis. A large detached shop features 3 bay doors, offering endless possibilities for hobbies, storage, or a workshop. You will also find a bathroom and small area that could be made into separate living quarters.

If you're looking to roll up your sleeves and put your personal touch on a property, this home is calling your name. Don't miss out on the chance to make it your own. Contact Sara Kattenberg at [918.841.4246](tel:918.841.4246) to schedule your private tour today and let your imagination soar!

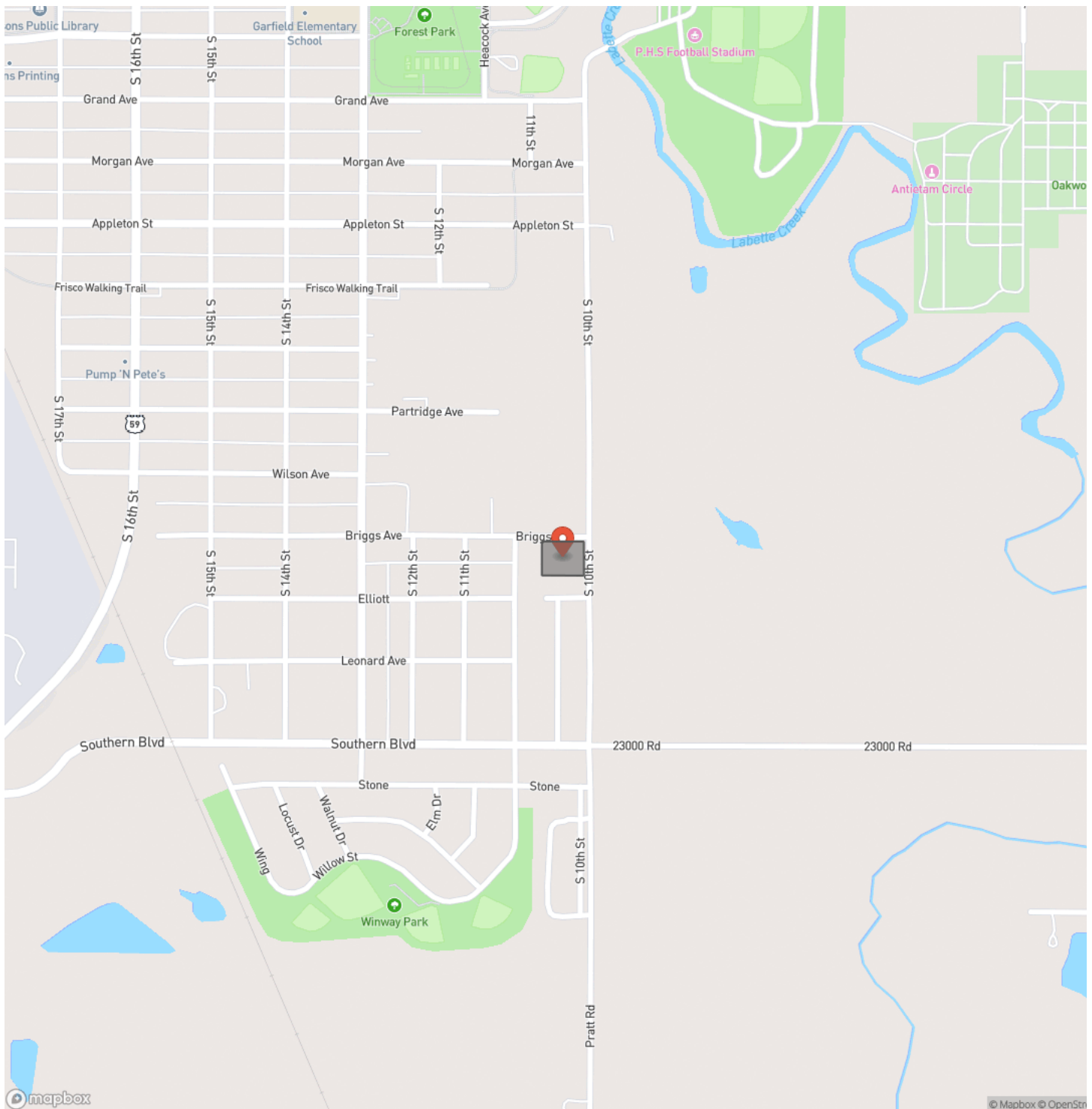
- 1 ½ story, old style home
- Built in 1915
- 1639 sq ft of living space
- 3 bedrooms (2 downstairs, 1 upstairs)
- 2 full baths (1 downstairs, 1 upstairs)
- Newer laminate flooring throughout
- Stainless steel appliances
- Cellar
- Washer & Dryer included
- Sits on 1+/- acre lot
- Large detached shop with 3 bay doors
- Deck off back of the house



**Quaint 1.5 Story Home with Shop Sitting on 1 Acre in Parsons
Parsons, KS / Labette County**

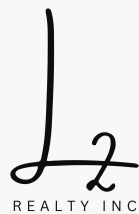
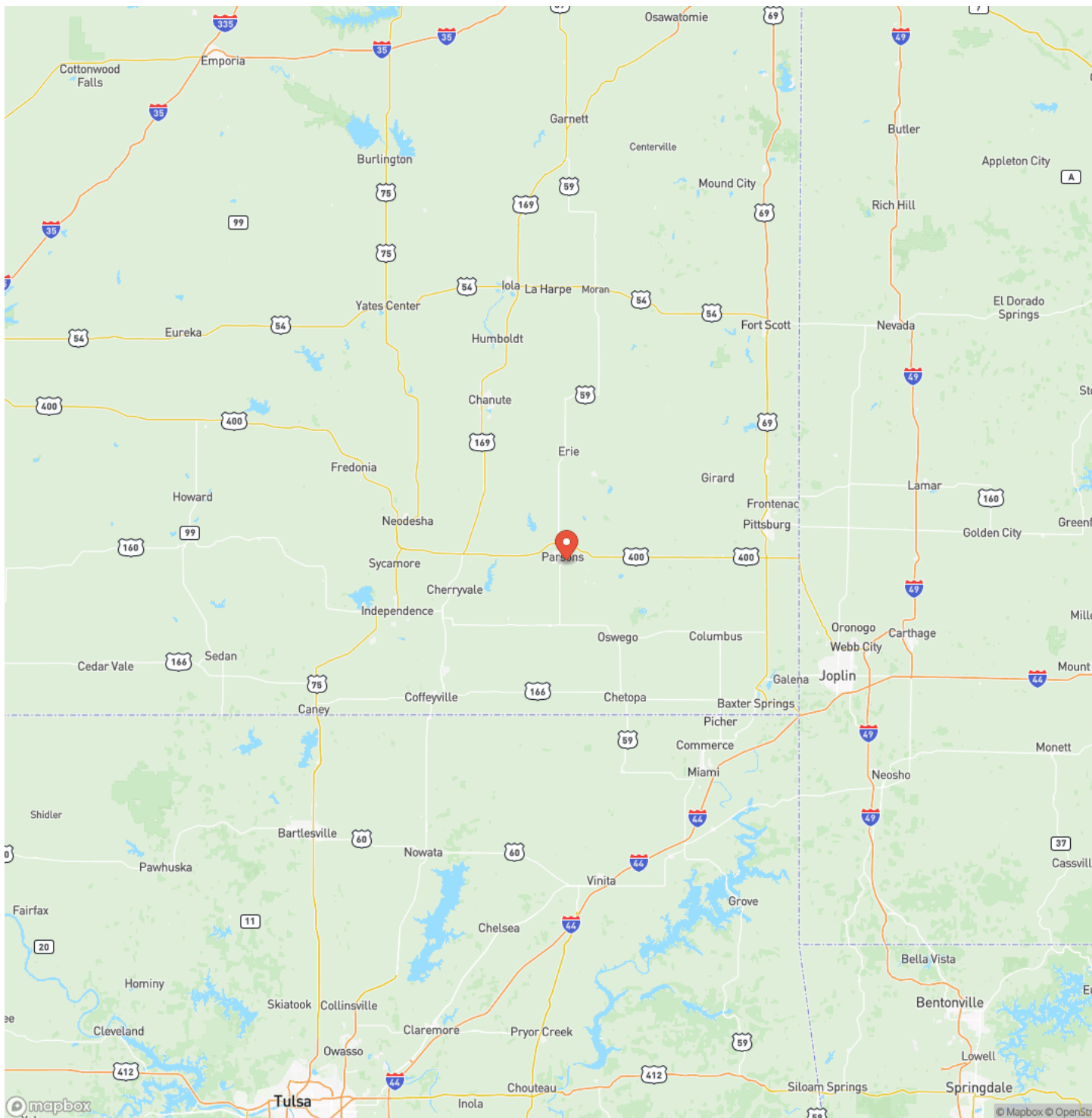


Locator Map



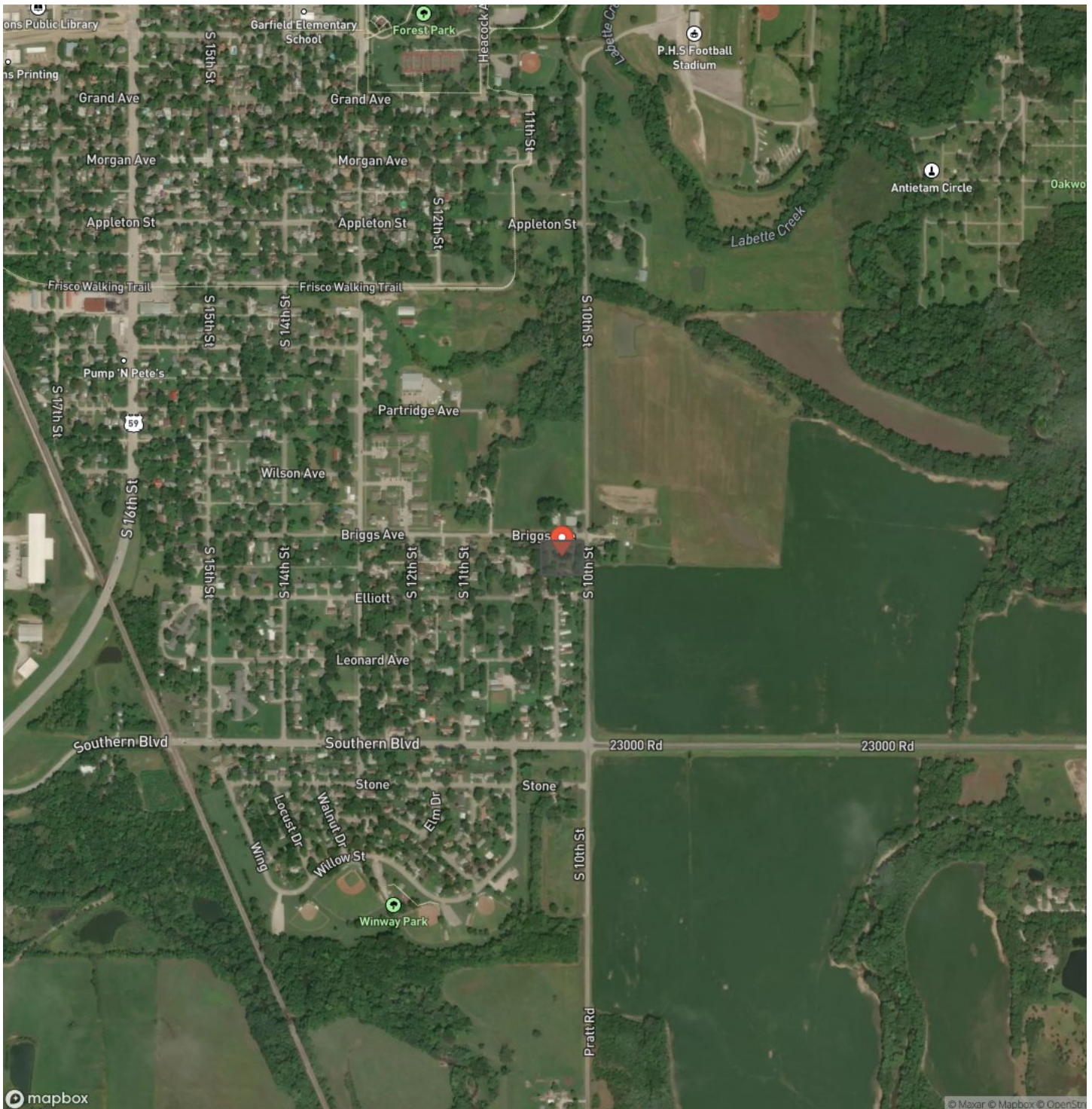
**Quaint 1.5 Story Home with Shop Sitting on 1 Acre in Parsons
Parsons, KS / Labette County**

Locator Map



Quaint 1.5 Story Home with Shop Sitting on 1 Acre in Parsons
Parsons, KS / Labette County

Satellite Map



Quaint 1.5 Story Home with Shop Sitting on 1 Acre in Parsons Parsons, KS / Labette County

LISTING REPRESENTATIVE

For more information contact:



Representative

Sara Kattenberg

Mobile

(918) 841-4246

Email

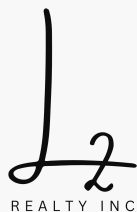
skattenberg@l2realtyinc.com

Address

City / State / Zip

Cherryvale, KS 67335

NOTES

[illegible]

MORE INFO ONLINE:

l2realtyinc.com

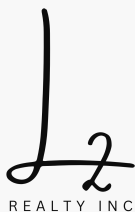
This image shows a single sheet of white paper with horizontal ruling lines. The lines are evenly spaced and run across the width of the page. There are no margins, text, or other markings on the paper.



DISCLAIMERS

Information in this brochure is provided solely for information purposes and does not constitute an offer to sell or advertise real estate outside the states in which broker or agent licensed. The information presented has been obtained from sources deemed to be reliable, but is not guaranteed or warranted by the agent, broker, or the sellers of these properties. This offering is subject to errors, omissions, prior sale, price change, correction or withdrawal from the market without notice. All references to age, square footage, income, expenses, acreage, carrying capacity, and land classification, etc. are approximate. Prospective buyers are chargeable with and expected to conduct their own independent investigation of the information and the property and to rely only on those results. Sellers reserve the right to accept or reject any and all offers without liability to any buyer or cooperating broker.

Maps are provided for illustration purposes only, the accuracy is not warranted. Parcels on interactive maps are not adjusted to match aerial backgrounds. This information is for reference purposes only and is not a legal document. Data maps contain errors. The seller and seller's agent are making known to all potential buyers that there may be variations between the location of the existing fence lines and the legal description of the deeded property. Seller and seller's agent make no warranties with regard to the location of the fence lines in relationship to the deeded property lines, nor does the Seller make any warranties or representations with regard to the specific acreage contained within the fenced property lines. Seller is selling the property in an "as is" condition, which includes the location of the fences as they exist. Boundaries shown on the accompanying maps are approximate, based on county parcel data. The maps are not to scale. The accuracy of the maps is not guaranteed. Prospective buyers are encouraged to verify fence lines, deeded property lines and acreages using a licensed surveyor at their own expense.



L2 Realty, Inc - Land and Lifestyle Properties

4045B CR 3900

Independence, KS 67301

(620) 577-4487

l2realtyinc.com

