

Spacious Cherryvale Gem – Room to Grow, Room to Love!
603 E Main
Cherryvale, KS 67335

\$187,000
0.590± Acres
Montgomery County



Spacious Cherryvale Gem – Room to Grow, Room to Love! Cherryvale, KS / Montgomery County

SUMMARY

Address

603 E Main

City, State Zip

Cherryvale, KS 67335

County

Montgomery County

Type

Residential Property

Latitude / Longitude

37.268043 / -95.544634

Taxes (Annually)

2730

Dwelling Square Feet

2318

Bedrooms / Bathrooms

5 / 3

Acreage

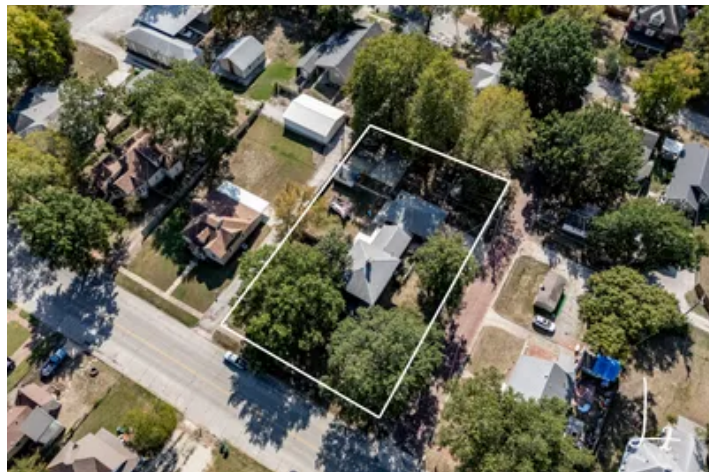
0.590

Price

\$187,000

Property Website

<https://l2realtyinc.com/property/spacious-cherryvale-gem-room-to-grow-room-to-love-montgomery-kansas/65753/>



Spacious Cherryvale Gem – Room to Grow, Room to Love!

Cherryvale, KS / Montgomery County

PROPERTY DESCRIPTION

Finding the perfect home in Southeast Kansas can feel like a challenge—but this charming 1890 beauty makes it easy! With 5 spacious bedrooms, plus the versatility of a 6th room cleverly converted from the formal dining area, this home offers endless potential for everyone to thrive. From the moment you step through the front door, the grand staircase in the foyer welcomes you, setting the stage for the home's timeless character. With over 2,300 sq. ft. of living space and hardwood floors throughout, the craftsmanship of this home shines in every corner.

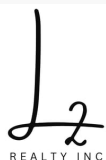
Four large bedrooms upstairs, accompanied by a full bath, offer ample personal space. One bedroom can easily double as a home office, TV room—or both—thanks to its size and flexibility. A second staircase leads directly to the kitchen, making it perfect for hosting gatherings or sneaking down for a midnight snack!

The bright and spacious kitchen is tucked at the back of the home, featuring stainless steel appliances, granite countertops, a pantry closet, and plenty of counter space. Need extra storage? The utility room comes with a sink and additional storage area—perfect for laundry days.

Step outside to a large backyard, ideal for playing or a space where pets can roam. Enjoy sunny afternoons or cool evenings under the covered patio, perfect for entertaining guests or relaxing with a good book. For more active fun, there's a poured concrete slab and basketball goal—an easy way to stay fit and have fun! The detached garage provides extra room for storage or hobbies, giving you plenty of space to create the workshop of your dreams.

This home isn't just about space—it's about lifestyle. Whether you're working remotely, entertaining friends, or creating memories, there's room for it all. Don't miss out on the opportunity- homes like this are rare and go fast! Call Sara Kattenberg at 918.841.4246 to schedule your showing today and make this incredible house your forever home!

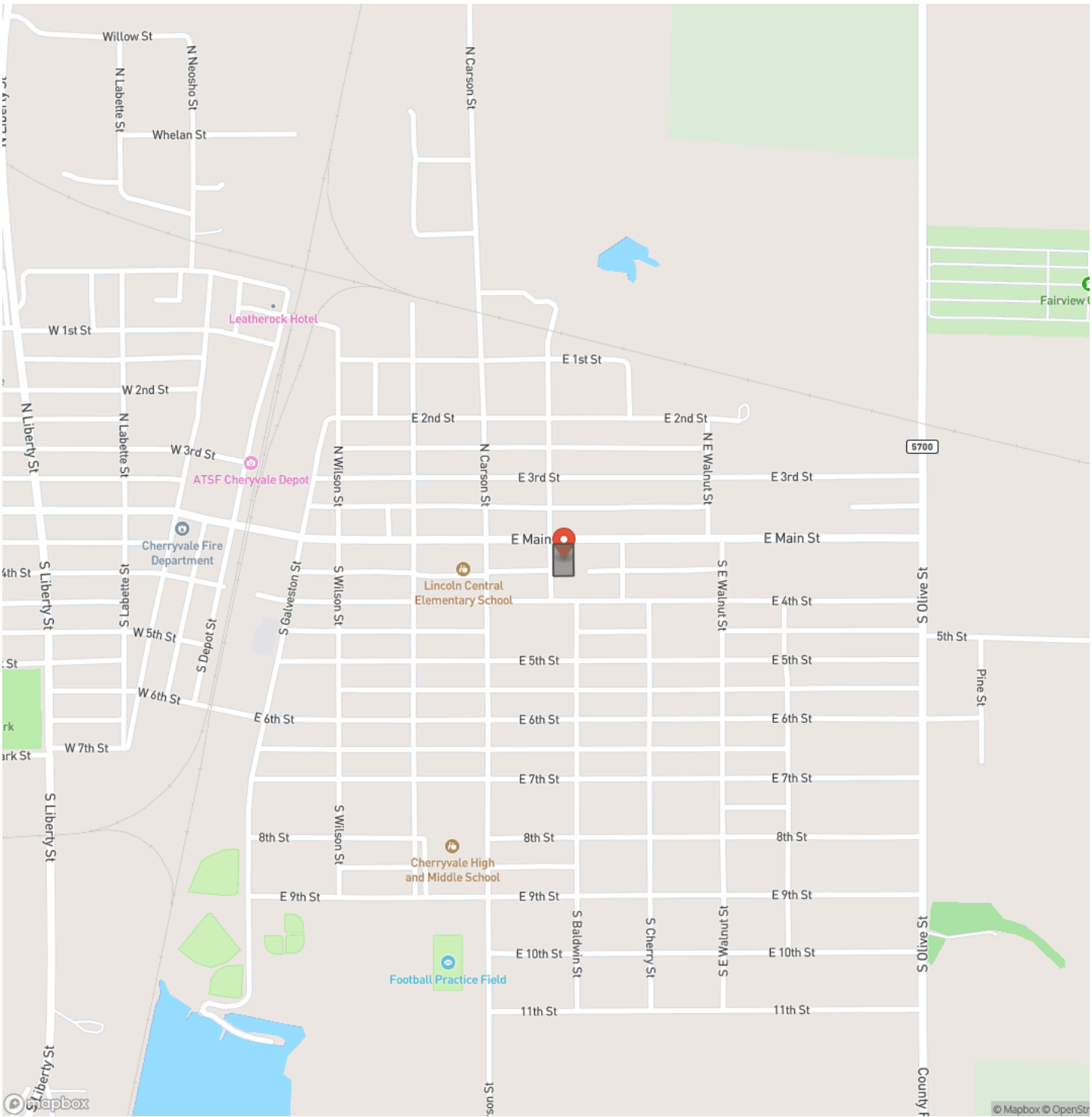
- 5 beds
- Potential 6th bedroom
- 2 full baths one upstairs, one down
- Beautiful staircase at entry and another staircase at the back leading to the kitchen
- 2318 sq ft of living space
- Built in 1890
- Hardwood floors
- Beautiful kitchen with pantry closet
- Stainless steel appliances
- Granite countertops
- Spacious laundry area
- Large lot with fenced backyard
- Covered patio
- Detached garage



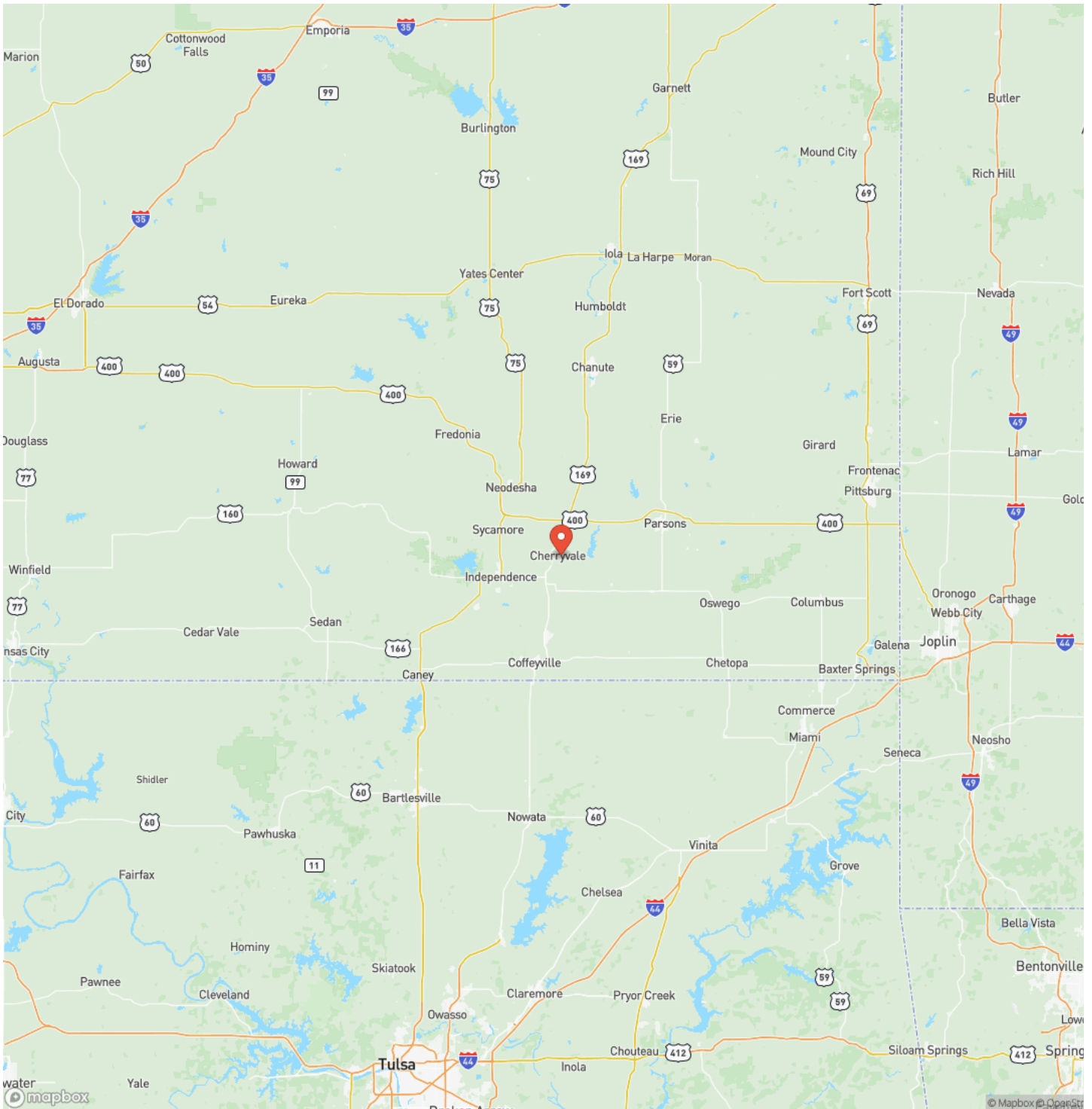
Spacious Cherryvale Gem – Room to Grow, Room to Love!
Cherryvale, KS / Montgomery County



Locator Map

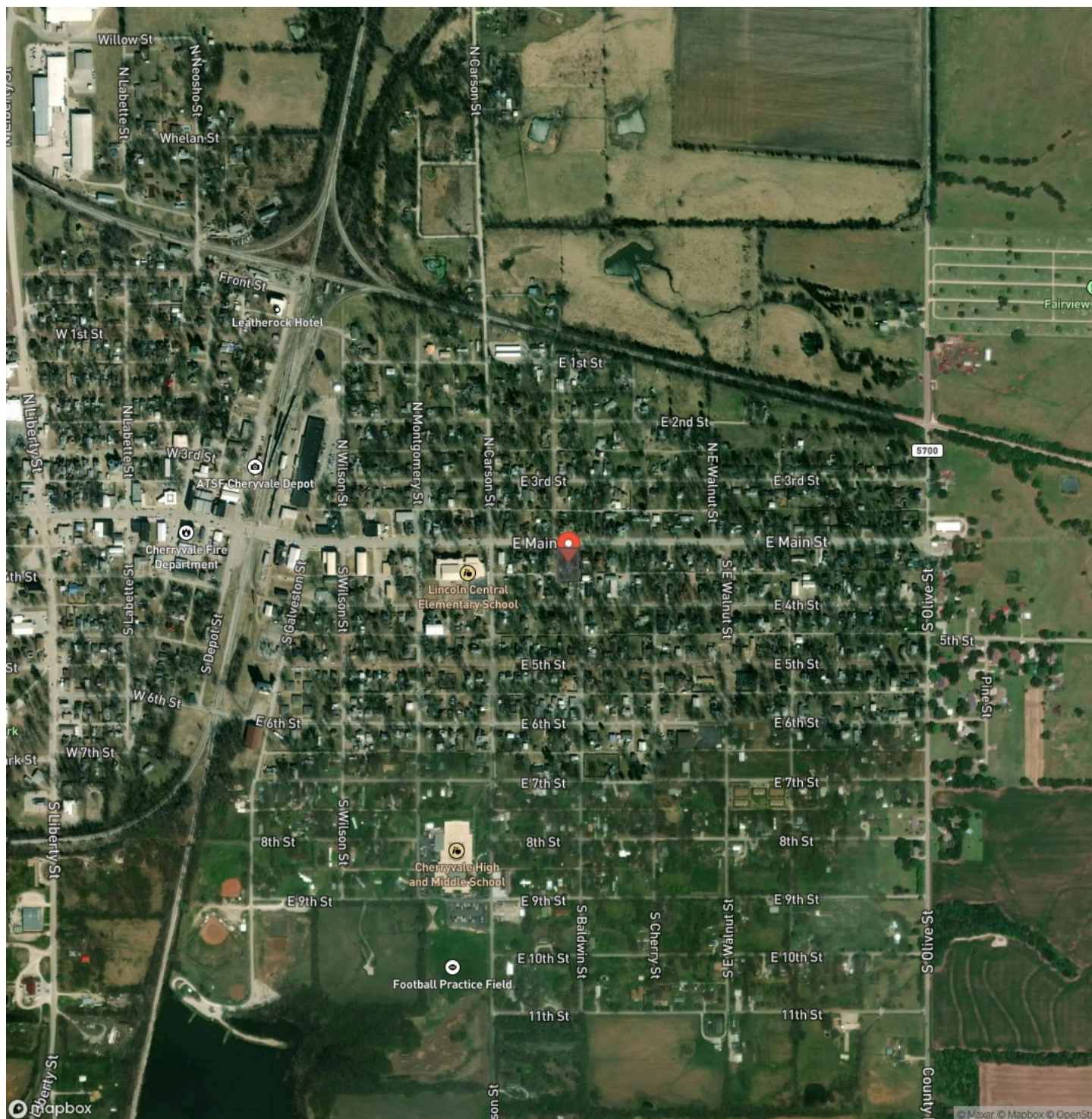


Locator Map



Cherryvale, KS / Montgomery County

Satellite Map



Spacious Cherryvale Gem – Room to Grow, Room to Love!

Cherryvale, KS / Montgomery County

LISTING REPRESENTATIVE

For more information contact:



Representative

Sara Kattenberg

Mobile

(918) 841-4246

Email

skattenberg@l2realtyinc.com

Address

City / State / Zip

Cherryvale, KS 67335

NOTES

[illegible]

[illegible]

L2realtyinc.com

DISCLAIMERS

Information in this brochure is provided solely for information purposes and does not constitute an offer to sell or advertise real estate outside the states in which broker or agent licensed. The information presented has been obtained from sources deemed to be reliable, but is not guaranteed or warranted by the agent, broker, or the sellers of these properties. This offering is subject to errors, omissions, prior sale, price change, correction or withdrawal from the market without notice. All references to age, square footage, income, expenses, acreage, carrying capacity, and land classification, etc. are approximate. Prospective buyers are chargeable with and expected to conduct their own independent investigation of the information and the property and to rely only on those results. Sellers reserve the right to accept or reject any and all offers without liability to any buyer or cooperating broker.

Maps are provided for illustration purposes only, the accuracy is not warranted. Parcels on interactive maps are not adjusted to match aerial backgrounds. This information is for reference purposes only and is not a legal document. Data maps contain errors. The seller and seller's agent are making known to all potential buyers that there may be variations between the location of the existing fence lines and the legal description of the deeded property. Seller and seller's agent make no warranties with regard to the location of the fence lines in relationship to the deeded property lines, nor does the Seller make any warranties or representations with regard to the specific acreage contained within the fenced property lines. Seller is selling the property in an "as is" condition, which includes the location of the fences as they exist. Boundaries shown on the accompanying maps are approximate, based on county parcel data. The maps are not to scale. The accuracy of the maps is not guaranteed. Prospective buyers are encouraged to verify fence lines, deeded property lines and acreages using a licensed surveyor at their own expense.



L2 Realty, Inc - Land and Lifestyle Properties
4045B CR 3900
Independence, KS 67301
(620) 577-4487
L2realtyinc.com

