

Coffeyville Charmer on Large Corner Lot
3611 W 4th St
Coffeyville, KS 67337

\$115,000
0.001± Acres
Montgomery County



Coffeyville Charmer on Large Corner Lot
Coffeyville, KS / Montgomery County

SUMMARY

Address

3611 W 4th St

City, State Zip

Coffeyville, KS 67337

County

Montgomery County

Type

Residential Property

Latitude / Longitude

37.040942 / -95.66983

Taxes (Annually)

1832

Dwelling Square Feet

1909

Bedrooms / Bathrooms

3 / 2

Acreage

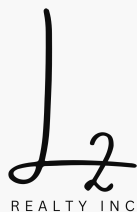
0.001

Price

\$115,000

Property Website

<https://l2realtyinc.com/property/coffeyville-charmer-on-large-corner-lot-montgomery-kansas/51807/>



Coffeyville Charmer on Large Corner Lot

Coffeyville, KS / Montgomery County

PROPERTY DESCRIPTION

Welcome to this charming 1940s home in Coffeyville, KS! This spacious 3-bedroom, 2-bath, 1 1/2 story home is waiting for you to make it your own.

As you step inside, you'll be greeted by the warm glow of the hardwood floors and the crackling of a wood burning fireplace in the large living room. The library/office area is perfect for those who work from home or simply enjoy a cozy reading nook.

The large eat-in-kitchen has plenty of space to prepare meals and enough room to sit and enjoy mealtime together.

Travel back down the hallway to discover a full bathroom and a cozy bedroom offering convenience and privacy for guests or family members. On the opposite end of the hallway, discover the primary bedroom, boasting an en suite bath and a generously-sized closet, providing ample storage space for all your needs.

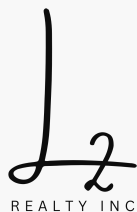
Ascend the staircase to uncover a delightful surprise- a spacious loft area offering endless possibilities. Whether you envision it as a second living area or a play area for the little ones, this versatile space is limited only by your imagination. Upstairs you will also find a third bedroom. With 1909 sq ft of total living space, there's plenty of room to spread out and make memories in this lovely home.

Situated on a large corner lot, this home boasts a deck for outdoor gatherings, a storm shelter for peace of mind, and a detached garage that has been converted into a convenient office/storage space.

The circle drive and multiple driveways provide ample parking for guests, while the shed and chicken coop add a touch of country charm.

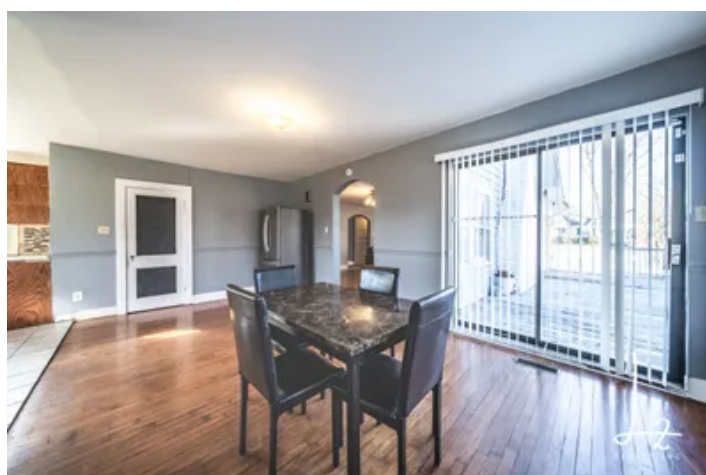
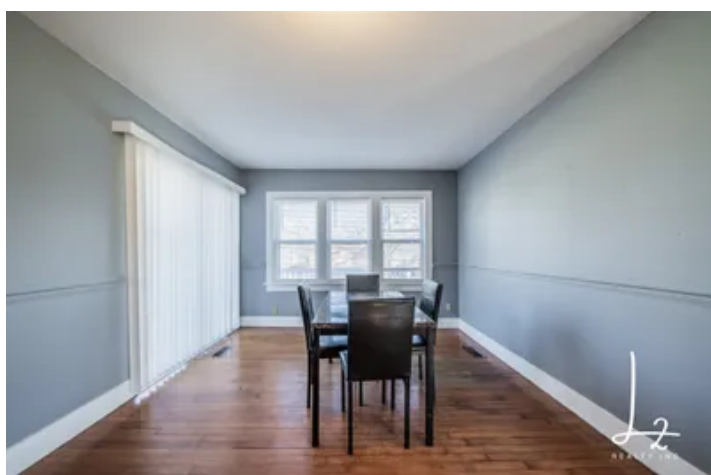
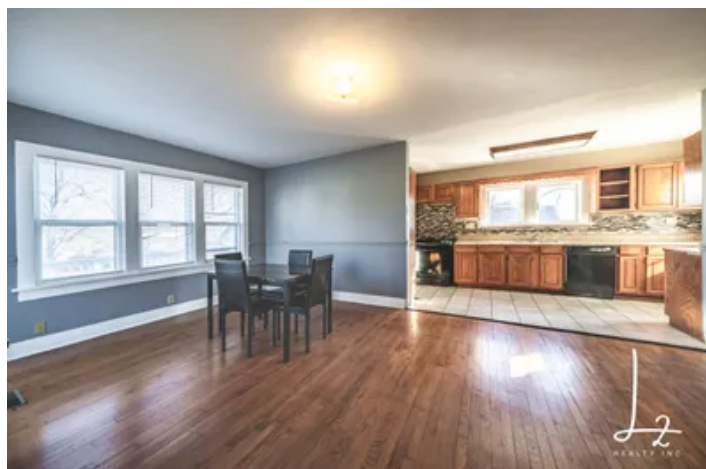
While the exterior of the house may need some attention, the potential for this property is limitless. With plenty of space inside and out, this home is just waiting for its new owner to come in and make it their own. Don't miss out on this opportunity to create your dream home in a great neighborhood in Coffeyville. Call Sara at 918.841.4246 to schedule a showing today!

- 1 ½ Story home, built in 1940
- 3 Bedrooms
- 2 Bathrooms
- 1909 sq. ft. of living space
- Hardwood floors
- Wood burning fireplace
- Library/home office space
- Eat-in-kitchen
- Ceramic tile floors in kitchen
- Loft area upstairs
- Basement
- Deck
- 0.87+/- acre corner lot

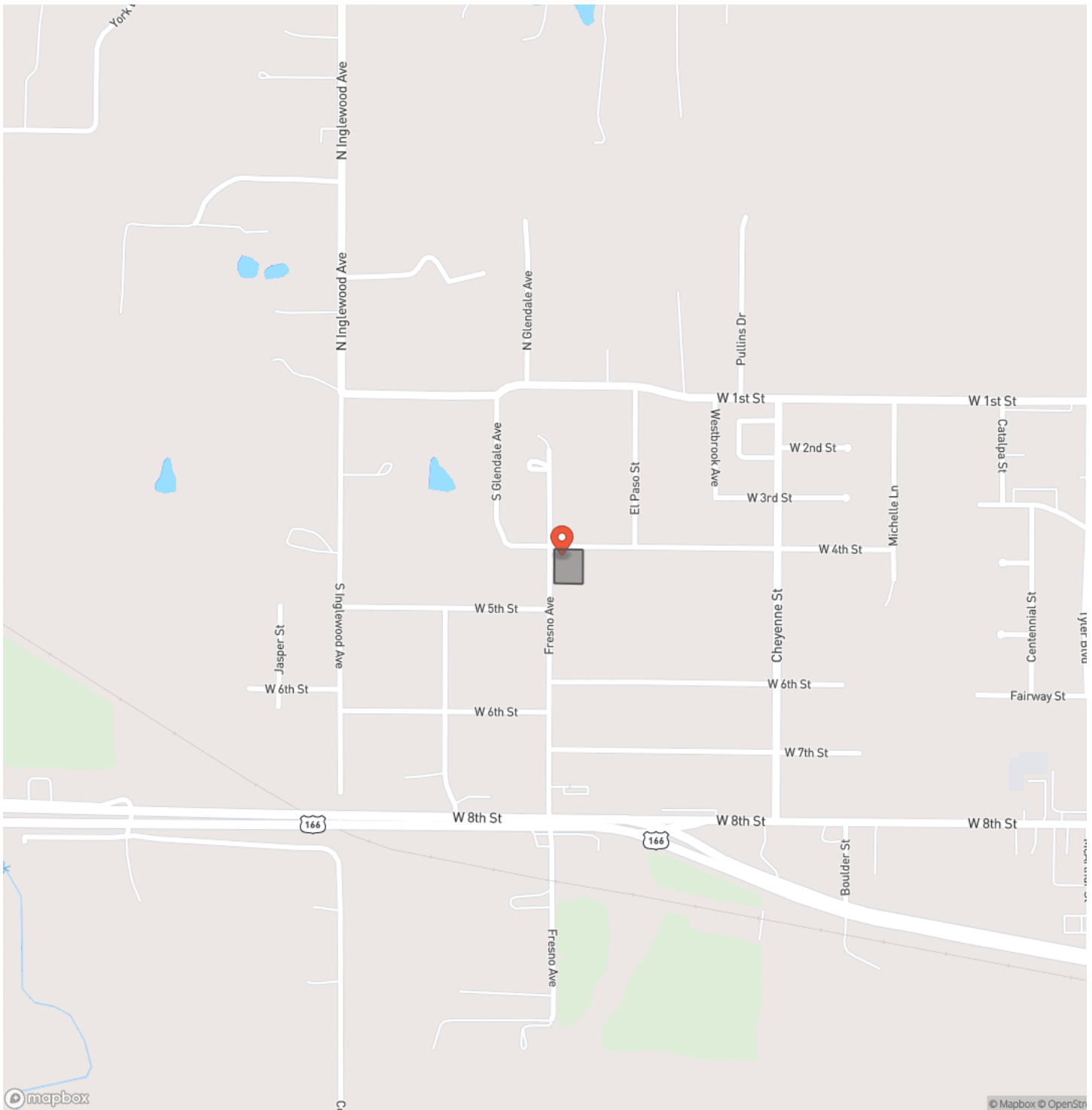


- Detached garage converted into workshop
- Shed
- Chicken coop
- Storm shelter

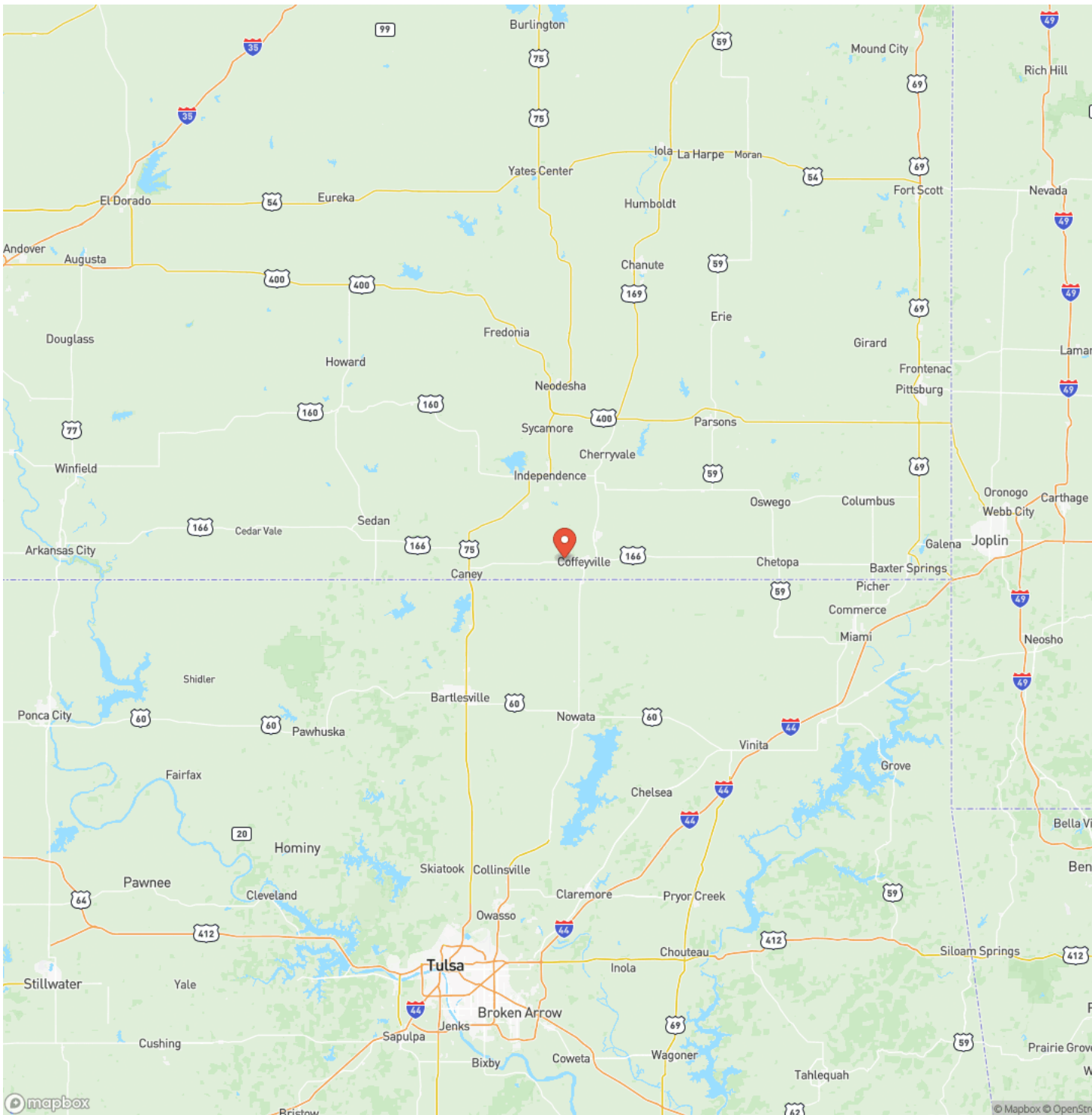
Coffeyville Charmer on Large Corner Lot
Coffeyville, KS / Montgomery County



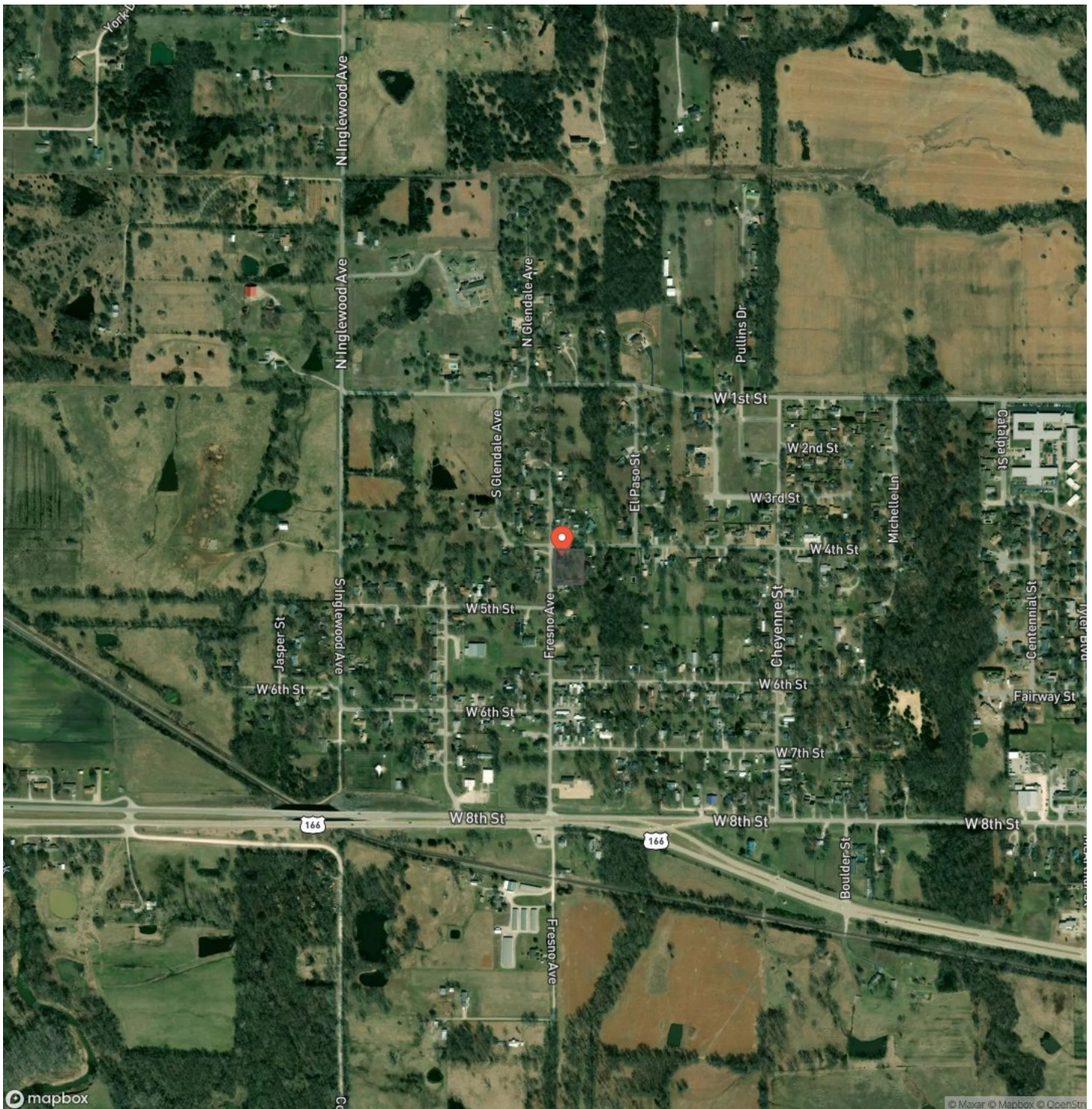
Locator Map



Locator Map



Satellite Map



Coffeyville Charmer on Large Corner Lot
Coffeyville, KS / Montgomery County

LISTING REPRESENTATIVE

For more information contact:



Representative

Sara Kattenberg

Mobile

(918) 841-4246

Email

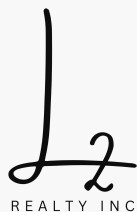
skattenberg@l2realtyinc.com

Address

City / State / Zip

Cherryvale, KS 67335

NOTES

[illegible]

MORE INFO ONLINE:

l2realtyinc.com

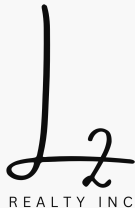
This image shows a blank sheet of white paper with horizontal ruling lines. The lines are evenly spaced and run across the width of the page. There are no margins, text, or other markings on the paper.



DISCLAIMERS

Information in this brochure is provided solely for information purposes and does not constitute an offer to sell or advertise real estate outside the states in which broker or agent licensed. The information presented has been obtained from sources deemed to be reliable, but is not guaranteed or warranted by the agent, broker, or the sellers of these properties. This offering is subject to errors, omissions, prior sale, price change, correction or withdrawal from the market without notice. All references to age, square footage, income, expenses, acreage, carrying capacity, and land classification, etc. are approximate. Prospective buyers are chargeable with and expected to conduct their own independent investigation of the information and the property and to rely only on those results. Sellers reserve the right to accept or reject any and all offers without liability to any buyer or cooperating broker.

Maps are provided for illustration purposes only, the accuracy is not warranted. Parcels on interactive maps are not adjusted to match aerial backgrounds. This information is for reference purposes only and is not a legal document. Data maps contain errors. The seller and seller's agent are making known to all potential buyers that there may be variations between the location of the existing fence lines and the legal description of the deeded property. Seller and seller's agent make no warranties with regard to the location of the fence lines in relationship to the deeded property lines, nor does the Seller make any warranties or representations with regard to the specific acreage contained within the fenced property lines. Seller is selling the property in an "as is" condition, which includes the location of the fences as they exist. Boundaries shown on the accompanying maps are approximate, based on county parcel data. The maps are not to scale. The accuracy of the maps is not guaranteed. Prospective buyers are encouraged to verify fence lines, deeded property lines and acreages using a licensed surveyor at their own expense.



L2 Realty, Inc - Land and Lifestyle Properties

4045B CR 3900

Independence, KS 67301

(620) 577-4487

l2realtyinc.com

