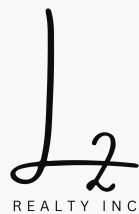


Delightful 1926 Bungalow in Howard
106 S Paw Paw
Howard, KS 67349

\$110,000
0.490± Acres
Elk County



Delightful 1926 Bungalow in Howard Howard, KS / Elk County

SUMMARY

Address

106 S Paw Paw

City, State Zip

Howard, KS 67349

County

Elk County

Type

Residential Property

Latitude / Longitude

37.468706 / -96.258795

Dwelling Square Feet

1844

Bedrooms / Bathrooms

4 / 1.5

Acreage

0.490

Price

\$110,000

Property Website

<https://l2realtyinc.com/property/delightful-1926-bungalow-in-howard-elk-kansas/41141/>



Delightful 1926 Bungalow in Howard Howard, KS / Elk County

PROPERTY DESCRIPTION

Welcome to this charming 1926 bungalow, located in the small town of Howard, Kansas. This home is a must-see for anyone who loves homes with plenty of character and history! The current owners are just the third family to call it home! You'll be delighted to have the original blueprints and floor plans to remind you of its rich heritage.

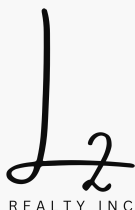
This delightful home boasts 4 bedrooms, 1 ½ bathrooms, and is spread over two levels with two bedrooms downstairs and two more upstairs. It has been lovingly cared for and updated throughout the years. Step inside to find original light fixtures, glass doorknobs, and wood burning fireplace with the original tiled hearth. The home features newer vinyl windows downstairs, a new ceiling fan in the living room and fresh neutral paint throughout – including ceilings. You'll also find an inviting parlor off the living room with original French doors.

The kitchen is waiting for your personal touch. You'll find original cabinets with a buffet pass-through connecting the kitchen to the dining area. Additionally, all the doors and cabinets are beautifully adorned with classic glass knobs. Updated features include brand new laminate flooring and the addition of a new countertop with cabinets and sink. The laundry room is conveniently located off the kitchen. Plus, there even a stackable washer and dryer that stays! You also have access to the stairs leading down to an unfinished basement.

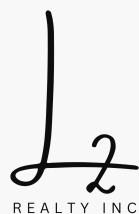
Don't miss out on the newly remodeled bathroom that includes subway tiles and a walk-in shower – perfect for relaxing after a long day! Another neat feature of this home is the large linen closet located in the hallway next to the bath. A phone niche is the perfect spot to leave your keys or decorate with a plant.

Finally, outside you can enjoy the large corner lot with mature trees. There is a detached garage/shop estimated to be approx. 1,232 sq. ft. It is complete with plumbing hookup (including toilet!). The carport can easily fit up to four of your vehicles. For added convenience there is also a ramp leading up to your front door that was built in 2021. You won't find this much space in such a charming home in the big city, but here, in the small town of Howard, Kansas, you can enjoy a comfortable, rural lifestyle that brings you closer to nature and your fellow neighbors. Your home search ends here. Call Sara Kattenberg, at [918.841.4246](tel:918.841.4246) now before someone else snatches up this beautiful piece of history.

- 1926 Bungalow
- 4 Bedrooms
- 1 ½ Bathrooms
- Hardwood floors throughout
- Original light fixtures
- Glass doorknobs
- Fireplace with original tiled hearth
- Parlor with original French doors
- Kitchen with original cabinets and glass knobs
- New laminate flooring in kitchen
- Laundry room with stackable washer/dryer
- Unfinished basement
- Newly remodeled bathroom



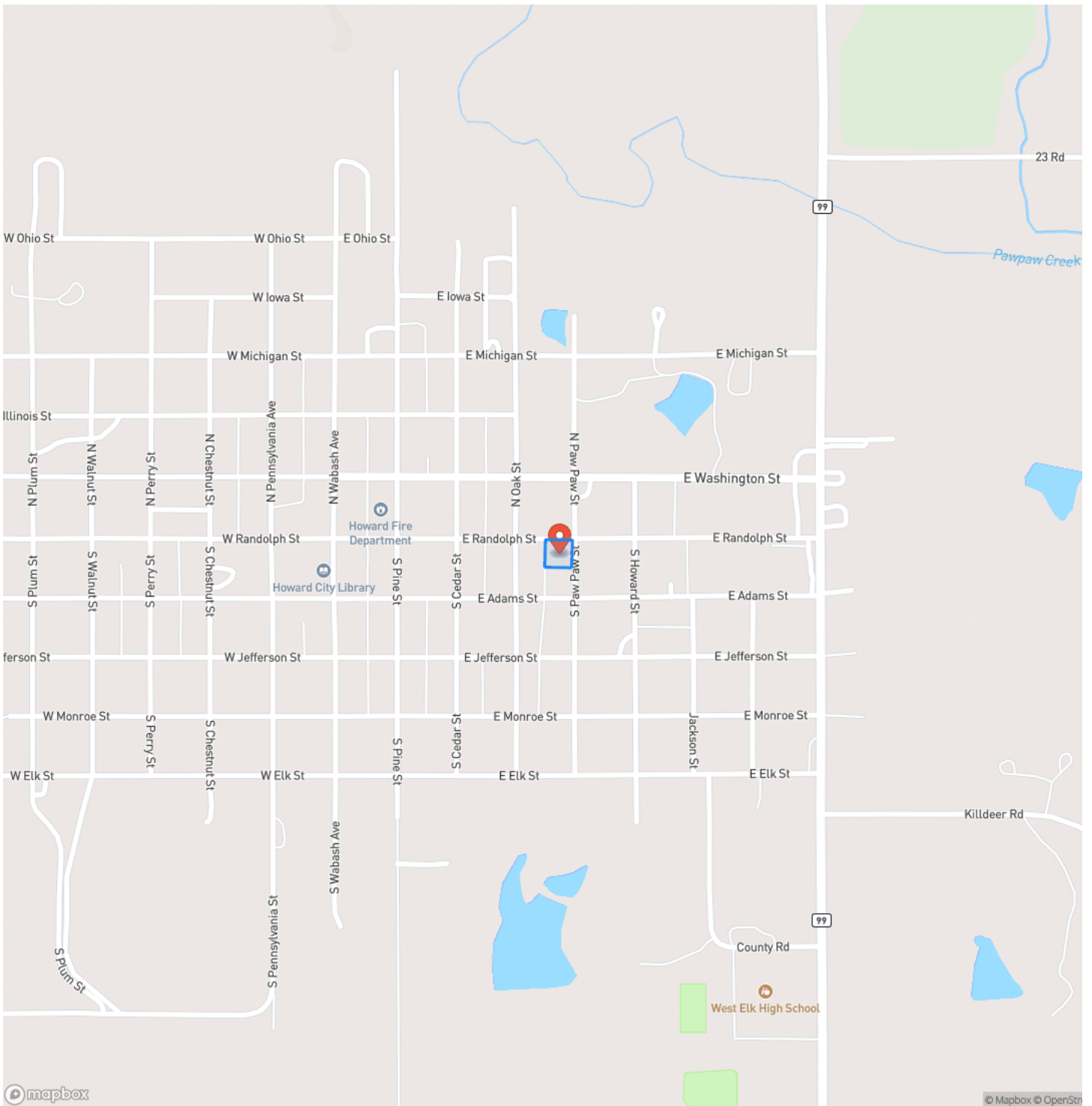
- Subway tiles and walk-in shower
- Fresh paint throughout
- Corner lot with mature trees
- Detached garage/shop
- Carport- fits up to 4 vehicles
- Ramp built in 2021



Delightful 1926 Bungalow in Howard
Howard, KS / Elk County

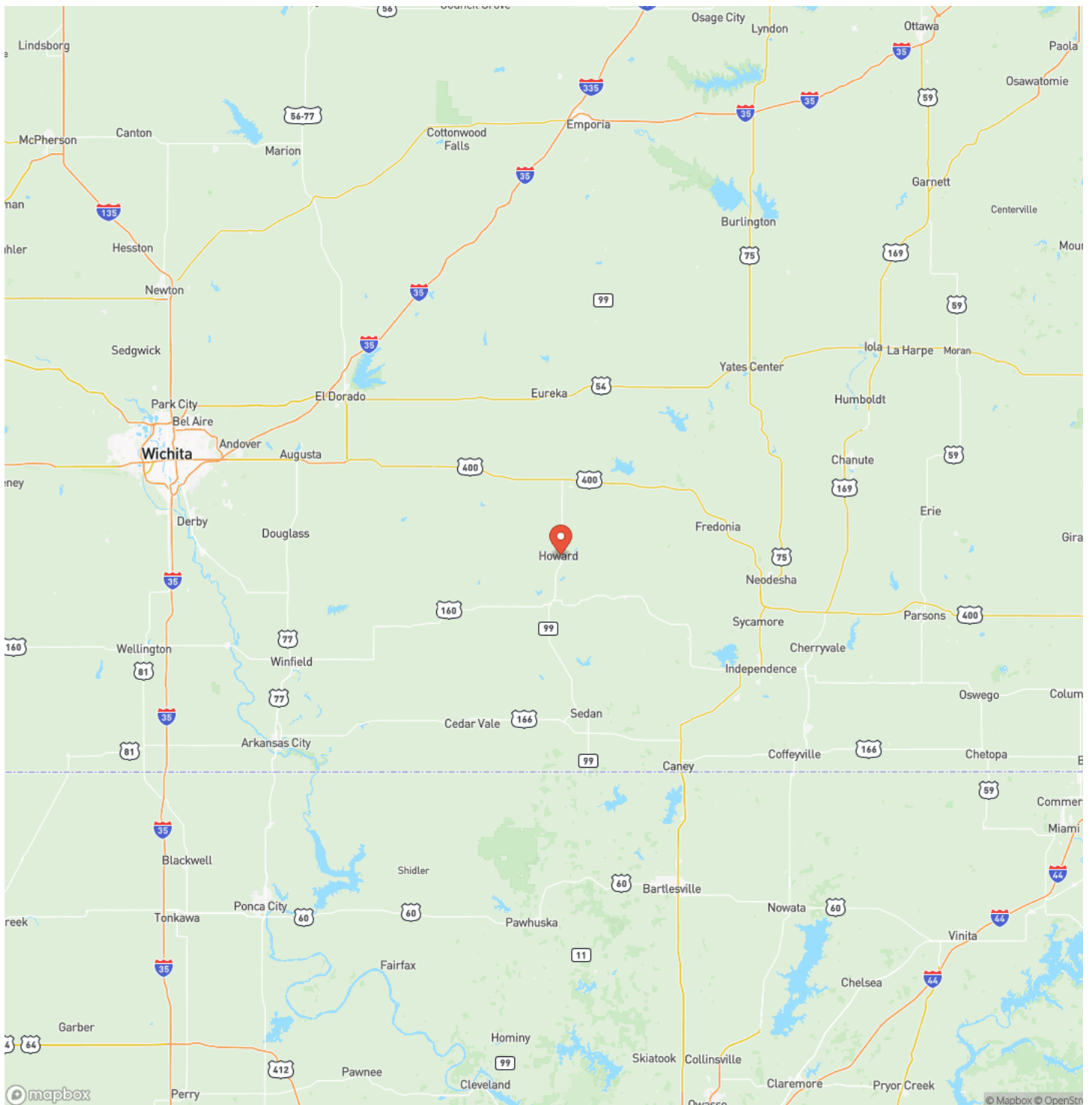


Locator Map

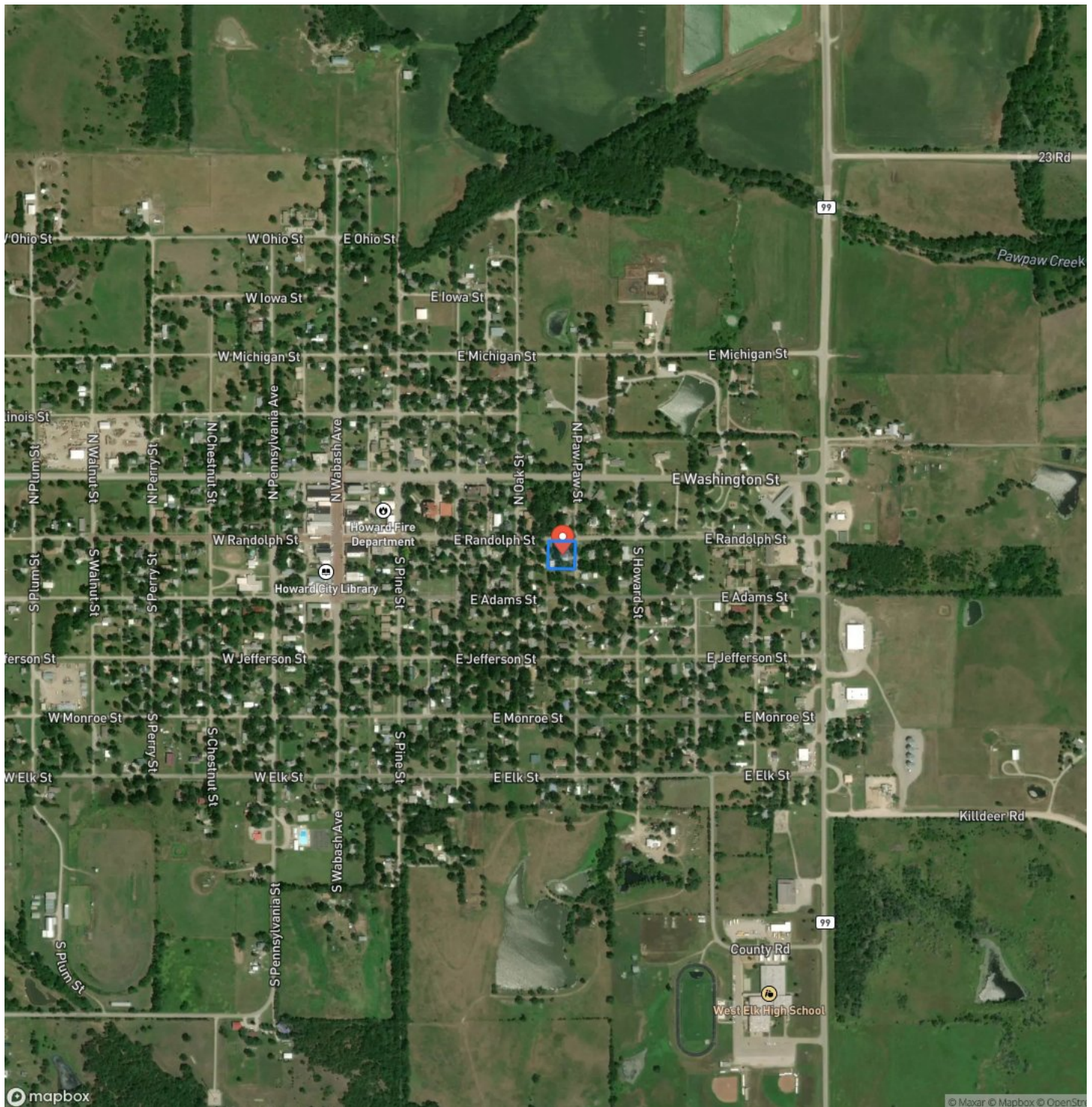


Delightful 1926 Bungalow in Howard
Howard, KS / Elk County

Locator Map



Satellite Map



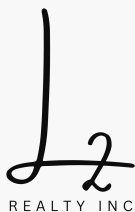
This image shows a single sheet of white paper with horizontal blue ruling lines. The lines are evenly spaced and run across the width of the page. There are no margins, text, or other markings on the paper.



DISCLAIMERS

Information in this brochure is provided solely for information purposes and does not constitute an offer to sell or advertise real estate outside the states in which broker or agent licensed. The information presented has been obtained from sources deemed to be reliable, is not guaranteed or warranted by the agent, broker, or the sellers of these properties. This offering is subject to errors, omissions, prior sale, price change, correction or withdrawal from the market without notice. All references to age, square footage, income, expenses, acreage, carrying capacity, and land classification, etc. are approximate. Prospective buyers are chargeable with and expected to conduct their own independent investigation of the information and the property and to rely only on those results. Sellers reserve the right to accept or reject any and all offers without liability to any buyer or cooperating broker.

Maps are provided for illustration purposes only, the accuracy is not warranted. Parcels on interactive maps are not adjusted to match aerial backgrounds. This information is for reference purposes only and is not a legal document. Data maps contain errors. The seller and seller's agent are making known to all potential buyers that there may be variations between the location of the existing fence lines and the legal description of the deeded property. Seller and seller's agent make no warranties with regard to the location of the fence lines in relation to the deeded property lines, nor does the Seller make any warranties or representations with regard to the specific acreage contained within the fenced property lines. Seller is selling the property in an "as is" condition, which includes the location of the fences as they exist. Boundaries shown on the accompanying maps are approximate, based on county parcel data. The maps are not to scale. The accuracy of the maps is not guaranteed. Prospective buyers are encouraged to verify fence lines, deeded property lines and acreages using a licensed surveyor at their own expense.



L2 Realty, Inc - Land and Lifestyle Properties

4045B CR 3900

Independence, KS 67301

(620) 577-4487

l2realtyinc.com

