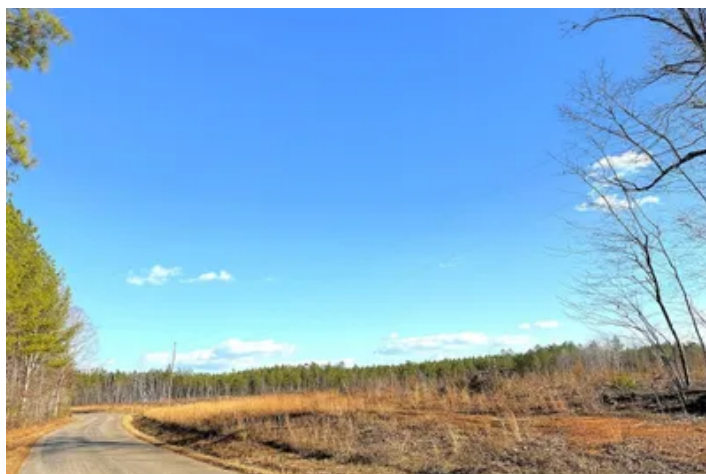


52.5 acres of Residential and Recreational Land for Sale
in Dinwiddie County VA!
Off White Oak Road
Dewitt, VA 23840

\$199,900
52.500± Acres
Dinwiddie County



52.5 acres of Residential and Recreational Land for Sale in Dinwiddie County VA! Dewitt, VA / Dinwiddie County

SUMMARY

Address

Off White Oak Road

City, State Zip

Dewitt, VA 23840

County

Dinwiddie County

Type

Farms, Hunting Land, Recreational Land, Undeveloped Land, Timberland, Horse Property, Lot

Latitude / Longitude

37.116997 / -77.676643

Acreage

52.500

Price

\$199,900

Property Website

<https://www.mossyoakproperties.com/property/52-5-acres-of-residential-and-recreational-land-for-sale-in-dinwiddie-county-va-dinwiddie-virginia/96918/>



52.5 acres of Residential and Recreational Land for Sale in Dinwiddie County VA! Dewitt, VA / Dinwiddie County

PROPERTY DESCRIPTION

For immediate assistance call Chris Howell at [757-651-8872](tel:757-651-8872).

Nearly 700 feet of road frontage - picturesque landscape - over 3,000 feet of interior trails! Call Chris Howell at [757-651-8872](tel:757-651-8872) to schedule a showing today!

Welcome to the White Oak Fifty-Two! The topography on this 52.5 acre parcel lays out like a work of art and certainly is a must see! Soil maps are also indicative of well drained soils. With approximately 700 feet of road frontage and 3,500 feet of lot depth, you won't have any trouble sprawling out on your new favorite place. Deciding where to build your custom home will be tons of fun on this one! Do you build near the road to gain adoration from passers by or on the distant hill top for seclusion and privacy?! The recent clear cut timber harvest has left a blank slate just waiting for your next move. Now is your time to construct food plots and plant the timber species of your choice. You won't need much to be an instant gamekeeper with the abundant signs of wildlife that are already here! Conveniently located just 45 miles south of Richmond. It's time to let the rolling hills of Dinwiddie County bring you home!

I invite you to explore the embedded map in this listing for a birds-eye view of the property and surrounding area.

<https://id.land/maps/295d30b54b4f071e857c2b86a078c194/share/unbranded>

Here are a few more things to know when considering this property:

Dinwiddie County Public Schools:

Dinwiddie Elementary – PK–5 – 7.0 miles

Dinwiddie Middle – 6–8 – 6.7 miles

Dinwiddie High – 9–12 – 6.9 miles

Internet Availability: Verizon, AT&T, Starlink

Convenient Rural Location Enjoy peaceful country living with excellent regional access. White Oak Road offers easy routes to I-85 and I-95, providing a convenient commute to Petersburg, Colonial Heights, Fort Gregg-Adams, and the greater Richmond area—all while maintaining privacy, open space, and a true rural setting.

Outdoor Recreation & Nature

Lake Chesdin – Popular for boating, fishing, kayaking, and lakeside recreation.

<https://dwr.virginia.gov/waterbody/lake-chesdin/>

Appomattox River – Ideal for fishing, paddling, and scenic river views.

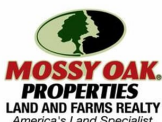
<https://www.dgif.virginia.gov/waterbody/appomattox-river>

Pamplin Historical Park Trails – Walking paths, preserved landscapes, and open countryside.

<https://pamplinpark.org>

Abundant Natural Surroundings – Open land and wooded settings perfect for outdoor living, recreation, and enjoying Virginia's rural beauty.

History & Culture Pamplin Historical Park & National Museum of the Civil War Soldier – One of Virginia's premier historic destinations.



<https://pamplinpark.org>.

Historic Downtown Petersburg – Architecture, museums, dining, and arts just a short drive away.

<https://petersburgva.gov/>

Five Forks Battlefield – A significant Civil War site located nearby.

<https://www.battlefields.org/learn/civil-war/battles/five-forks>

Community & Everyday Convenience

Colonial Heights Shopping & Dining – Major retailers, restaurants, and medical facilities nearby.

<https://www.colonialheightsva.gov>

Local Events & Farmers Markets – Seasonal events, markets, and community gatherings throughout the region.

<https://www.dinwiddieva.us>

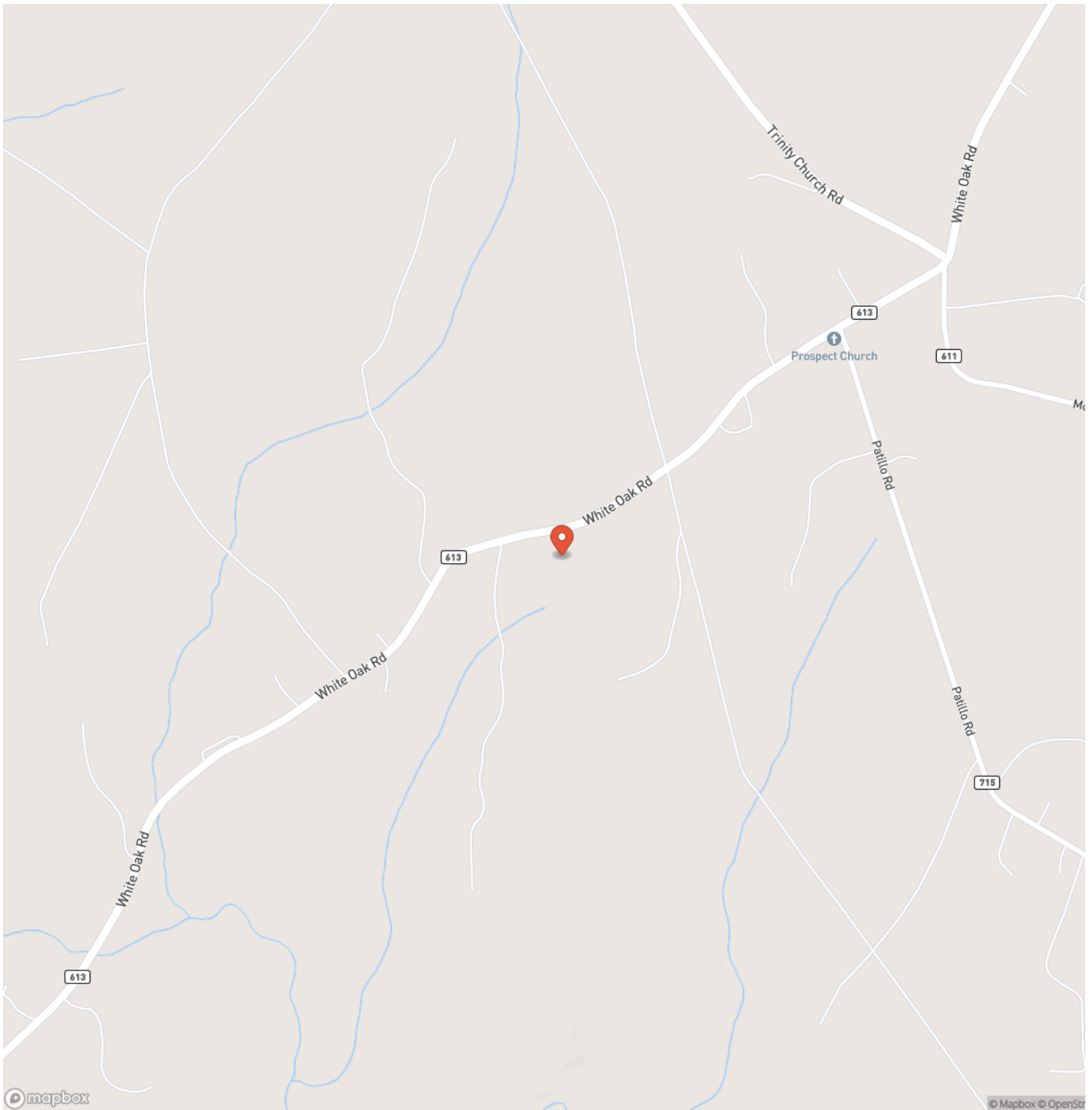
Dinwiddie county was established in 1752 from part of Prince George County and was named in honor of Robert Dinwiddie, the de facto head of the Virginia colony at the time. Agriculture has historically played an important role in the county's economy. Dinwiddie's close proximity to the city of Petersburg and its railroad lines led to the county hosting six notable Civil War battles.

For more information on this and other land for sale in Dinwiddie County, contact Chris Howell at [757-651-8872](tel:757-651-8872) or by email at chris@mossyoakproperties.com, or visit landandfarmsrealty.com.

52.5 acres of Residential and Recreational Land for Sale in Dinwiddie County VA!
Dewitt, VA / Dinwiddie County

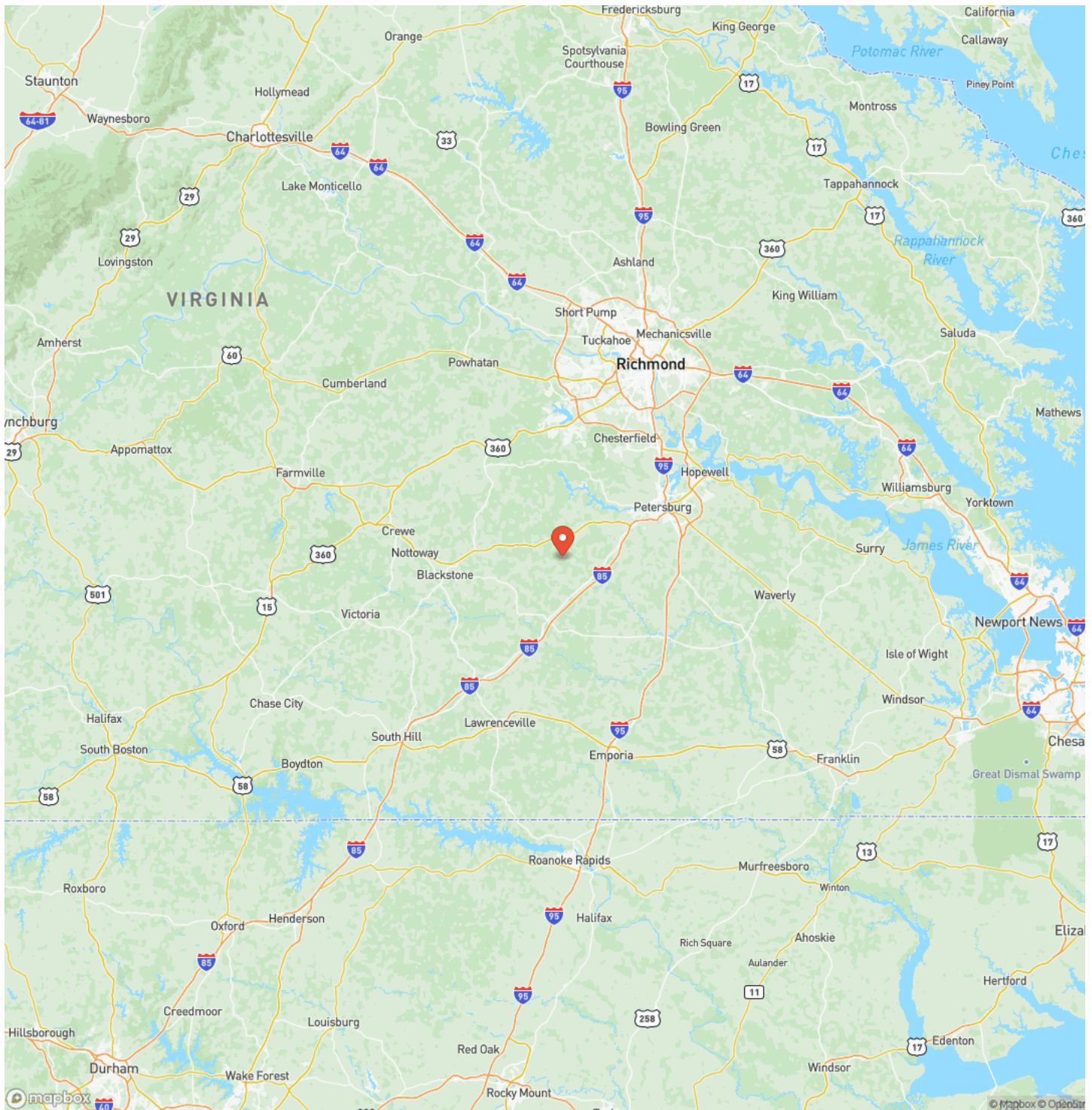


Locator Map



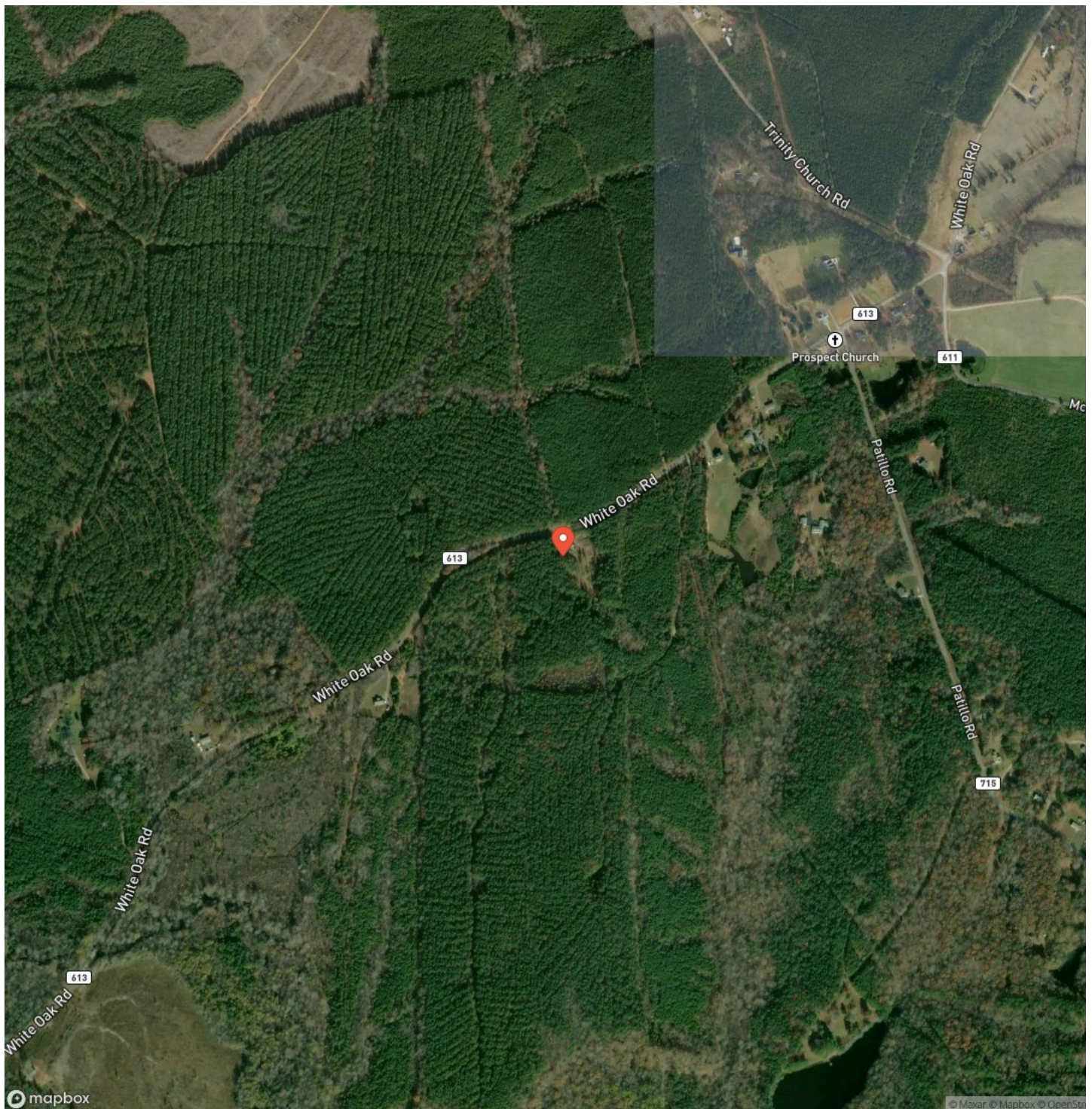
52.5 acres of Residential and Recreational Land for Sale in Dinwiddie County VA!
Dewitt, VA / Dinwiddie County

Locator Map



52.5 acres of Residential and Recreational Land for Sale in Dinwiddie County VA!
Dewitt, VA / Dinwiddie County

Satellite Map



Dewitt, VA / Dinwiddie County

For more information contact:



Chris Howell

(757) 651-8872

(844) 480-5263

chris@mossyoakproperties.com

601 N Mechanic St Suite 310

City / State / Zip

NOTES



[illegible]

MORE INFO ONLINE:
www.landandfarmsrealty.com

DISCLAIMERS

Information in this brochure is provided solely for information purposes and does not constitute an offer to sell or advertise real estate outside the states in which broker or agent licensed. The information presented has been obtained from sources deemed to be reliable, but is not guaranteed or warranted by the agent, broker, or the sellers of these properties. This offering is subject to errors, omissions, prior sale, price change, correction or withdrawal from the market without notice. All references to age, square footage, income, expenses, acreage, carrying capacity, and land classification, etc. are approximate. Prospective buyers are chargeable with and expected to conduct their own independent investigation of the information and the property and to rely only on those results. Sellers reserve the right to accept or reject any and all offers without liability to any buyer or cooperating broker.

Maps are provided for illustration purposes only, the accuracy is not warranted. Parcels on interactive maps are not adjusted to match aerial backgrounds. This information is for reference purposes only and is not a legal document. Data maps contain errors. The seller and seller's agent are making known to all potential buyers that there may be variations between the location of the existing fence lines and the legal description of the deeded property. Seller and seller's agent make no warranties with regard to the location of the fence lines in relationship to the deeded property lines, nor does the Seller make any warranties or representations with regard to the specific acreage contained within the fenced property lines. Seller is selling the property in an "as is" condition, which includes the location of the fences as they exist. Boundaries shown on the accompanying maps are approximate, based on county parcel data. The maps are not to scale. The accuracy of the maps is not guaranteed. Prospective buyers are encouraged to verify fence lines, deeded property lines and acreages using a licensed surveyor at their own expense.

Mossy Oak Properties Land and Farms Realty
101 Budleigh Street, Suite F
Manteo, NC 27954
(844) 480-5263
www.landandfarmsrealty.com

