

**80+/- Acres of Tillable and Hunting in Anderson County,
Ks.
Kincaid, KS 66032**

**80± Acres
Anderson County**



**80+/- Acres of Tillable and Hunting in Anderson County, Ks.
Kincaid, KS / Anderson County**

SUMMARY

City, State Zip

Kincaid, KS 66032

County

Anderson County

Type

Farms, Hunting Land

Latitude / Longitude

38.06331 / -95.139793

Acreage

80

Property Website

<https://redcedarland.com/detail/80-acres-of-tillable-and-hunting-in-anderson-county-ks-anderson-kansas/51798/>



**80+/- Acres of Tillable and Hunting in Anderson County, Ks.
Kincaid, KS / Anderson County**

PROPERTY DESCRIPTION

Tract 6 80+/- Acres of Excellent Tillable Land in Anderson County, Kansas.

Legal Description: 80+/- acres in S7, T23, R21 W2 NE4.

Driving Directions: From the east side of Kincaid Kansas take Texas Rd south 1 mile. Turn back east on se 300th rd and go 1/2 mile east. The farm is on the south side of the road.

2023 Taxes: \$484.92

Deer Unit: 11

Property Description: Located just south east of Kincaid, Kansas this tract of land has 68+/- acres in tillable. The farm land was in soybeans last year with yields of _____. This farm is on a cash rent basis, and a year to year verbal with the tenant. Silty Clay Loam soils can promise great yields with even below average rainfall. The remaining 12+/- acres is in timber cover and with the right crops planted you can expect to hunt this farm as well!

Key Features

68+/- Acres Tillable

12+/- in Cover / Timber

Excellent Soils

Great Yields

Close to Kincaid Kansas

1.5 From Blacktop

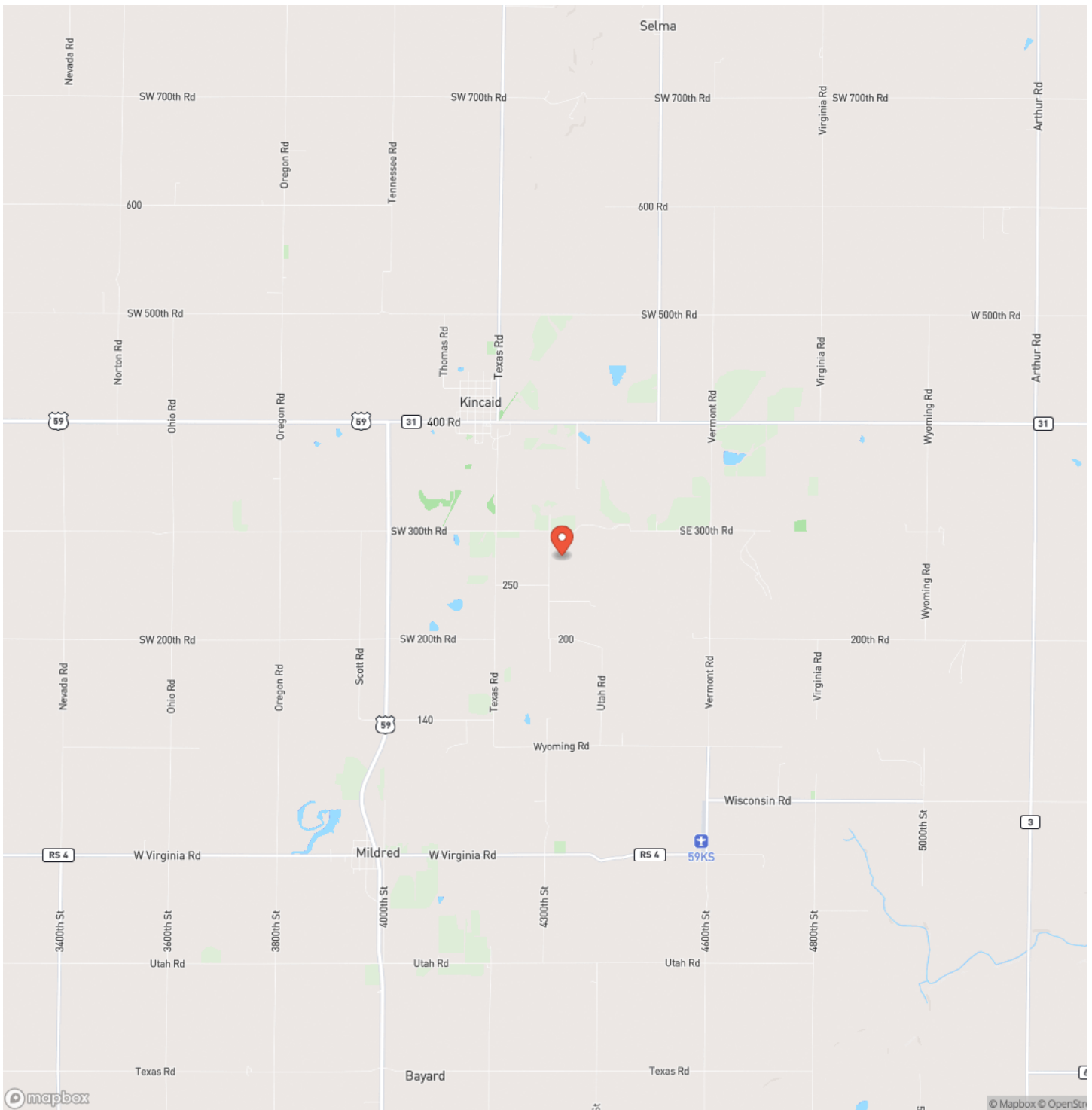


**80+/- Acres of Tillable and Hunting in Anderson County, Ks.
Kincaid, KS / Anderson County**



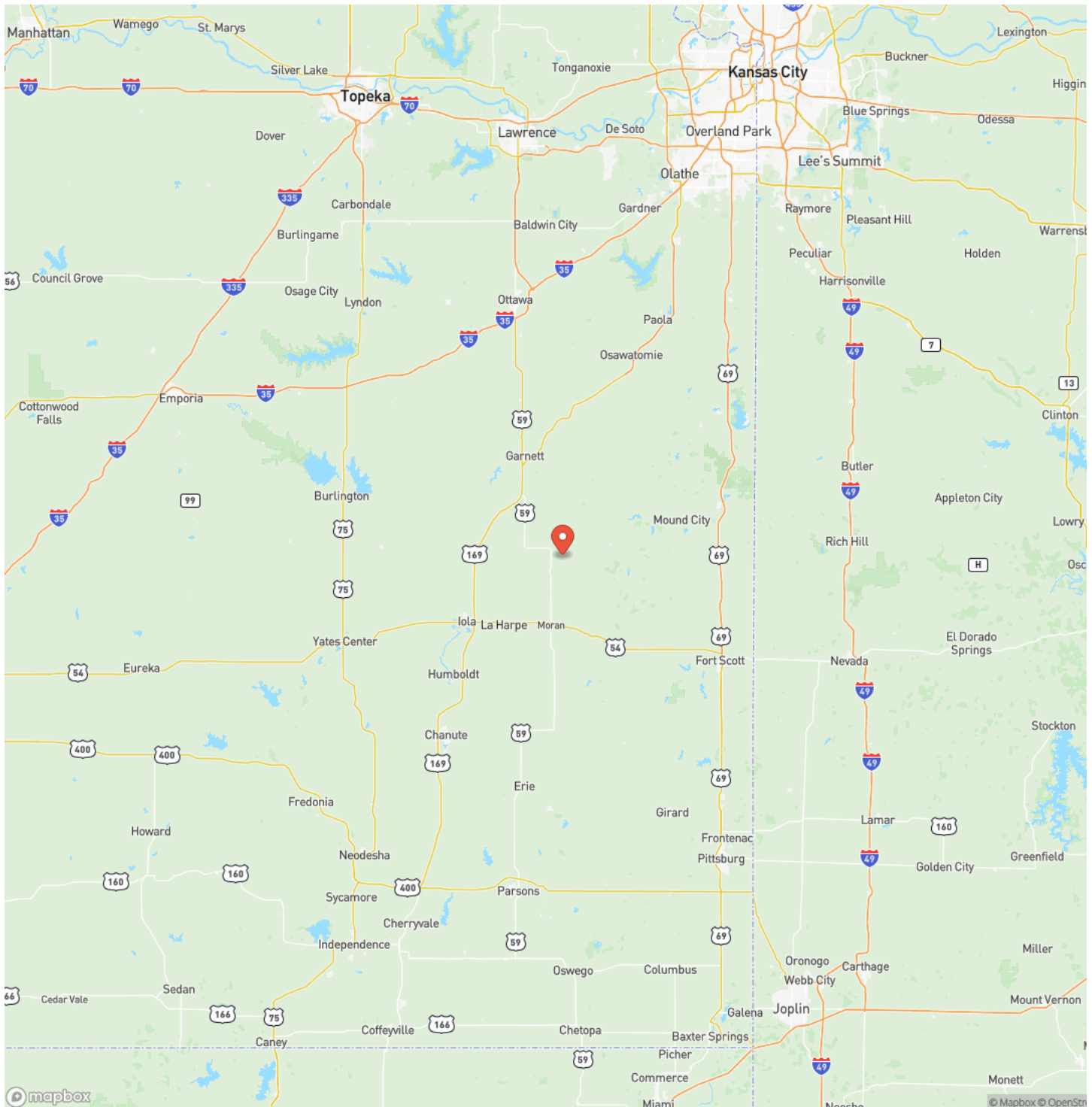
80+/- Acres of Tillable and Hunting in Anderson County, Ks.
Kincaid, KS / Anderson County

Locator Map



80+/- Acres of Tillable and Hunting in Anderson County, Ks.
Kincaid, KS / Anderson County

Locator Map

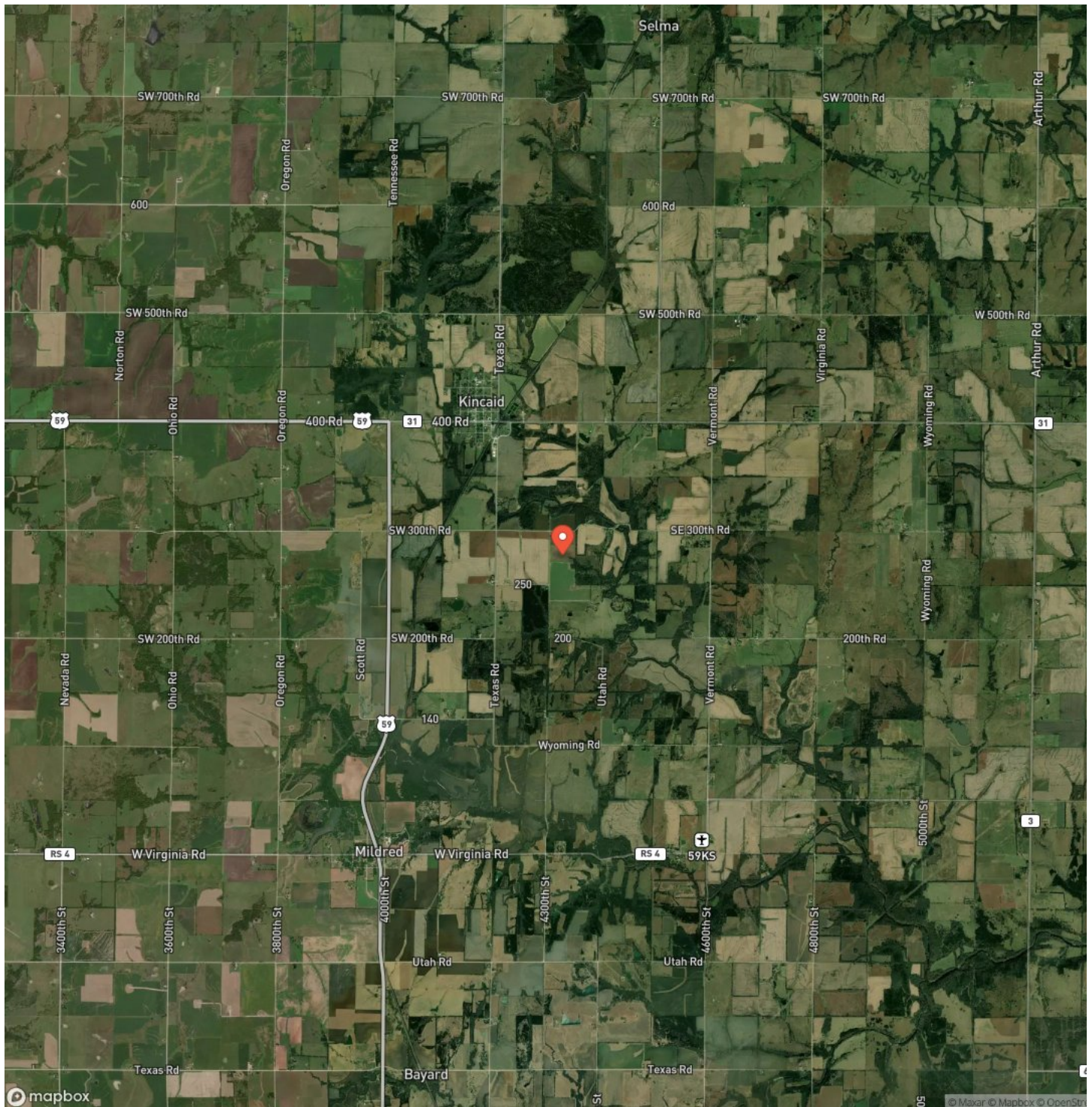


MORE INFO ONLINE:

redcedarland.com

80+/- Acres of Tillable and Hunting in Anderson County, Ks.
Kincaid, KS / Anderson County

Satellite Map



80+/- Acres of Tillable and Hunting in Anderson County, Ks. Kincaid, KS / Anderson County

LISTING REPRESENTATIVE

For more information contact:



Representative

Ryan Koelsch

Mobile

(620) 546-3746

Office

(620) 546-3746

Email

ryan@redcedarland.com

Address

City / State / Zip

Saint John, KS 67576

NOTES



MORE INFO ONLINE:

redcedarland.com

[illegible]

redcedarland.com

DISCLAIMERS

Information in this brochure is provided solely for information purposes and does not constitute an offer to sell or advertise real estate outside the states in which broker or agent licensed. The information presented has been obtained from sources deemed to be reliable, but is not guaranteed or warranted by the agent, broker, or the sellers of these properties. This offering is subject to errors, omissions, prior sale, price change, correction or withdrawal from the market without notice. All references to age, square footage, income, expenses, acreage, carrying capacity, and land classification, etc. are approximate. Prospective buyers are chargeable with and expected to conduct their own independent investigation of the information and the property and to rely only on those results. Sellers reserve the right to accept or reject any and all offers without liability to any buyer or cooperating broker.

Maps are provided for illustration purposes only, the accuracy is not warranted. Parcels on interactive maps are not adjusted to match aerial backgrounds. This information is for reference purposes only and is not a legal document. Data maps contain errors. The seller and seller's agent are making known to all potential buyers that there may be variations between the location of the existing fence lines and the legal description of the deeded property. Seller and seller's agent make no warranties with regard to the location of the fence lines in relationship to the deeded property lines, nor does the Seller make any warranties or representations with regard to the specific acreage contained within the fenced property lines. Seller is selling the property in an "as is" condition, which includes the location of the fences as they exist. Boundaries shown on the accompanying maps are approximate, based on county parcel data. The maps are not to scale. The accuracy of the maps is not guaranteed. Prospective buyers are encouraged to verify fence lines, deeded property lines and acreages using a licensed surveyor at their own expense.



Red Cedar Land Co.
2 NE 10th ave
, KS 67576
(620) 546-3746
redcedarland.com

