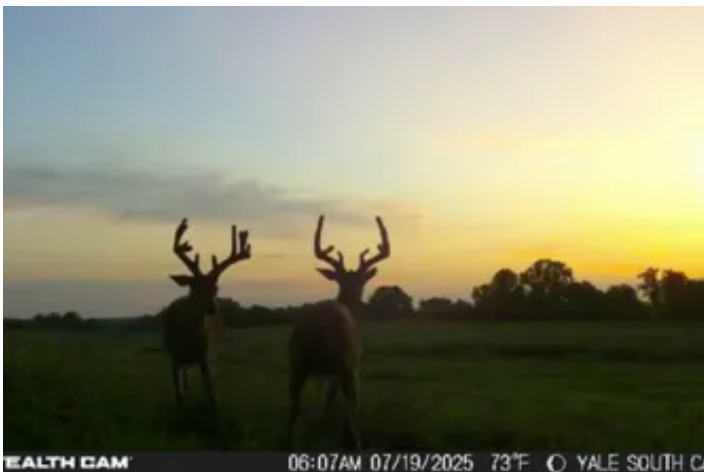


112 Acres - 1/2 Plus of Cimarron River Frontage
E 670 Road #2
Yale, OK 74085

\$367,000
112± Acres
Payne County



112 Acres - 1/2 Plus of Cimarron River Frontage
Yale, OK / Payne County

SUMMARY

Address

E 670 Road #2

City, State Zip

Yale, OK 74085

County

Payne County

Type

Hunting Land, Recreational Land, Riverfront

Latitude / Longitude

36.04151 / -96.647406

Taxes (Annually)

143

Acreage

112

Price

\$367,000

Property Website

<https://oklahomalandmark.com/property/112-acres-1-2-plus-of-cimarron-river-frontage-payne-oklahoma/70482>



112 Acres - 1/2 Plus of Cimarron River Frontage Yale, OK / Payne County

PROPERTY DESCRIPTION

Discover Your Hunting Haven: 112 Acres with Cimarron River Frontage in Payne County, OK

Explore the potential of this expansive 112-acre property nestled in Payne County, Oklahoma, along the scenic Cimarron River. Boasting over half a mile of river frontage, this land is an ideal retreat for hunting aficionados. The landscape presents a perfect blend of open pastures and dense, mature timber, creating a natural habitat that attracts both deer and waterfowl. This property is a haven for deer hunting with the thick timber providing excellent cover, while the substantial river frontage makes it a magnet for waterfowl, perfect for duck hunting enthusiasts.

Electricity is already available on the property, setting the stage for its development into your personal hunting retreat. With some enhancements, this could become a true waterfowl paradise or a secluded deer camp. Located just 45 minutes from Tulsa, 30 minutes from Stillwater, and 1 hour and 20 minutes from Oklahoma City, the property offers easy access for a weekend getaway or as a permanent hunting lodge. There's also an opportunity to expand; adjacent land is available up to 295 acres, all with river access.

The diverse terrain and the presence of water bodies further enhance the appeal for outdoor lovers looking to invest in land for hunting or seeking their own slice of nature.

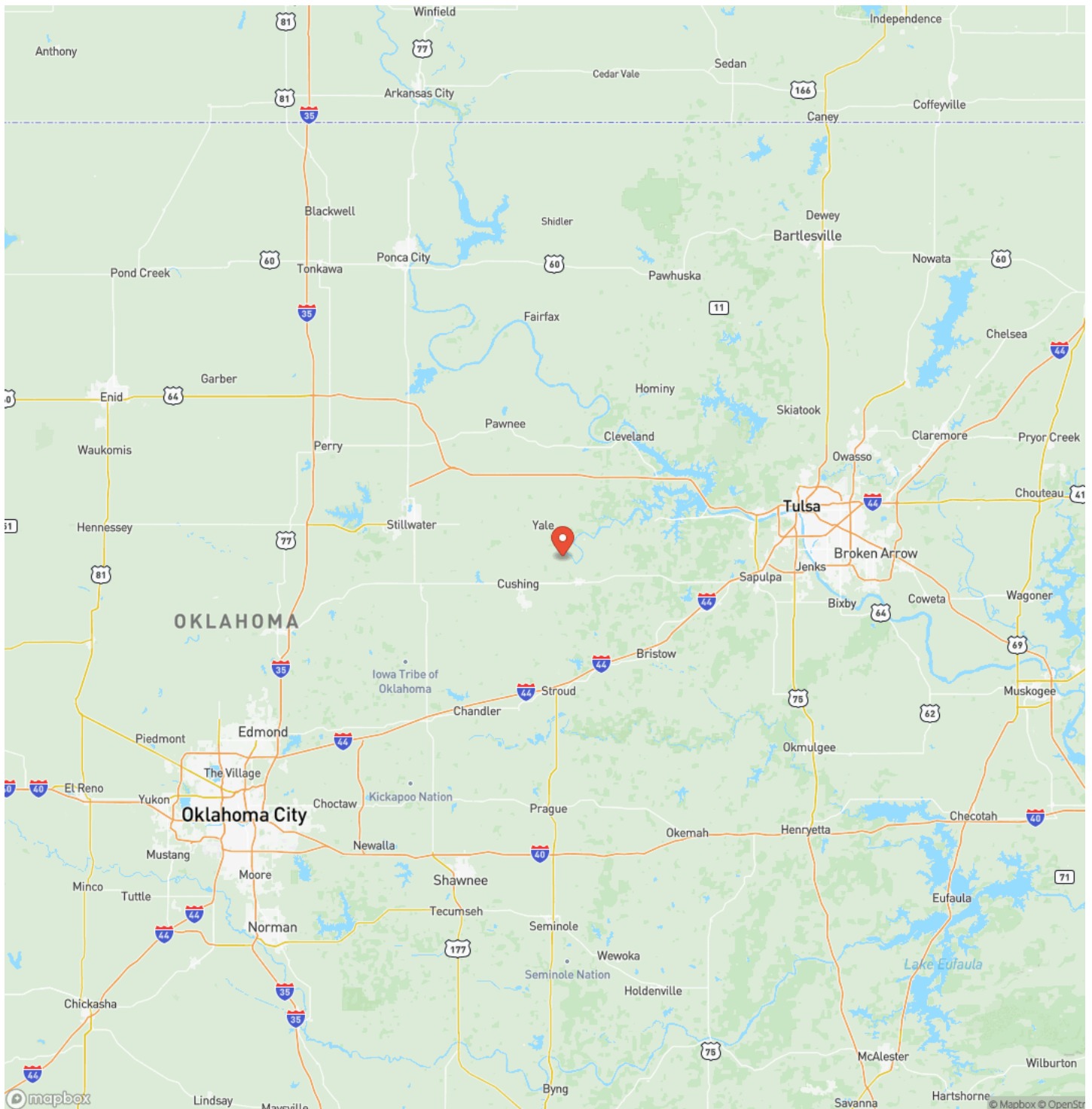
112 Acres - 1/2 Plus of Cimarron River Frontage
Yale, OK / Payne County



Locator Map



Locator Map



Satellite Map



**112 Acres - 1/2 Plus of Cimarron River Frontage
Yale, OK / Payne County**

LISTING REPRESENTATIVE

For more information contact:



Representative

Blake Merritt

Mobile

(405) 317-8670

Office

(405) 317-8670

Email

blake@OklahomaLandmark.com

Address

City / State / Zip

NOTES

[illegible]

DISCLAIMERS

Information in this brochure is provided solely for information purposes and does not constitute an offer to sell or advertise real estate outside the states in which broker or agent licensed. The information presented has been obtained from sources deemed to be reliable, but is not guaranteed or warranted by the agent, broker, or the sellers of these properties. This offering is subject to errors, omissions, prior sale, price change, correction or withdrawal from the market without notice. All references to age, square footage, income, expenses, acreage, carrying capacity, and land classification, etc. are approximate. Prospective buyers are chargeable with and expected to conduct their own independent investigation of the information and the property and to rely only on those results. Sellers reserve the right to accept or reject any and all offers without liability to any buyer or cooperating broker.

Maps are provided for illustration purposes only, the accuracy is not warranted. Parcels on interactive maps are not adjusted to match aerial backgrounds. This information is for reference purposes only and is not a legal document. Data maps contain errors. The seller and seller's agent are making known to all potential buyers that there may be variations between the location of the existing fence lines and the legal description of the deeded property. Seller and seller's agent make no warranties with regard to the location of the fence lines in relationship to the deeded property lines, nor does the Seller make any warranties or representations with regard to the specific acreage contained within the fenced property lines. Seller is selling the property in an "as is" condition, which includes the location of the fences as they exist. Boundaries shown on the accompanying maps are approximate, based on county parcel data. The maps are not to scale. The accuracy of the maps is not guaranteed. Prospective buyers are encouraged to verify fence lines, deeded property lines and acreages using a licensed surveyor at their own expense.

Metro Mark Real Estate
6501 Avondale Drive
Nichols Hills, OK 73116
(405) 848-8818
