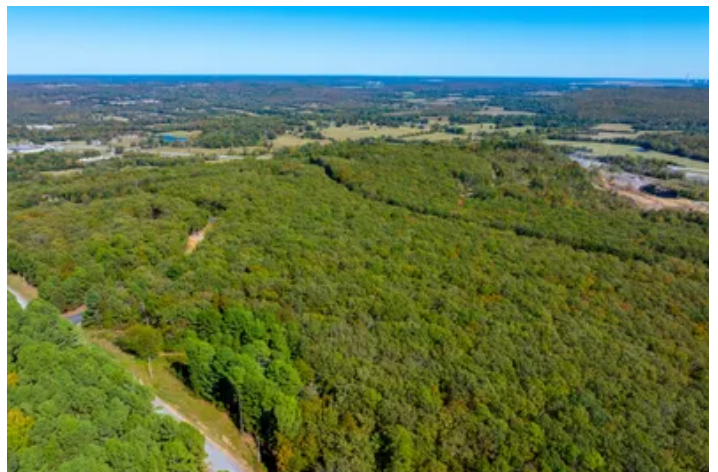
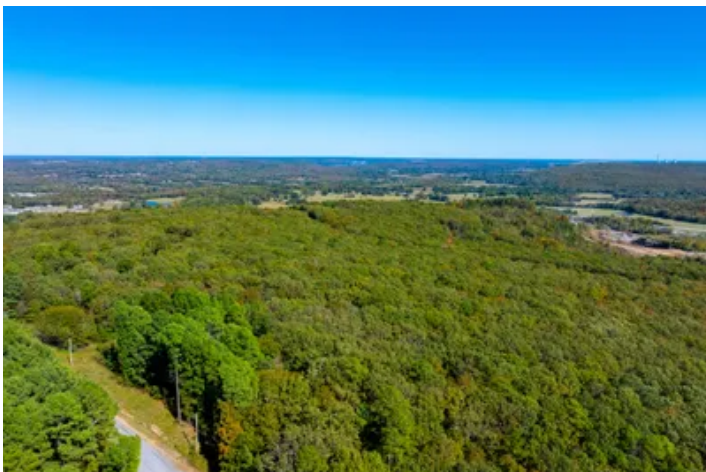


9 + acres of luxury living in Vista Pointe – subdivision
quiet meets country freedom
000 castle Drive
Southside, AR 72501

\$100,000
9.14± Acres
Independence County



**9 + acres of luxury living in Vista Pointe – subdivision quiet meets country freedom
Southside, AR / Independence County**

SUMMARY

Address

000 castle Drive

City, State Zip

Southside, AR 72501

County

Independence County

Type

Undeveloped Land, Lot

Latitude / Longitude

35.659697 / -91.622046

Acreage

9.14

Price

\$100,000

Property Website

<https://www.mossoakproperties.com/property/9-acres-of-luxury-living-in-vista-pointe-subdivision-quiet-meets-country-freedom/independence/arkansas/70546/>



9 + acres of luxury living in Vista Pointe – subdivision quiet meets country freedom Southside, AR / Independence County

PROPERTY DESCRIPTION

PRICE REDUCED — NOW \$100,000 (was \$125,000)

9.14 ± Acres – Vista Pointe Subdivision, Southside (Independence Co.), Arkansas

Discover your private haven in a beautifully laid subdivision with one easy access in/out. This 9.14-acre tract (Lots 71–77) offers a rare combination of space, privacy, and proximity. Nestled just minutes from the Southside schools and town amenities, yet far enough to feel tucked away.

Highlights

- 9.14 ± acres in the sought-after Vista Pointe Subdivision — plenty of room for your custom home, outbuildings, recreation, and space to breathe.
- Wooded and natural terrain, with trails for walking, riding or simply exploring your own land.
- One-way in/out subdivision for quieter traffic, giving you a more secluded, low-disturbance setting.
- Just minutes to the heart of Southside — enjoy country living without long drives to town.
- Building requirements in place (see Bill of Assurances & Plat in documents) — this is a well-managed neighborhood.
- Perfect for those wanting the best of both worlds: rural privacy with subdivision conveniences.

Property Details

- Location: Off Castle Drive, Vista Pointe Subdivision, Southside, Independence County, AR 72501
- Size: 9.14 ± acres – Lots 71-77
- Undeveloped Land / Lot — ready for your plans

Why This Property Stands Out

This is not just “another piece of land”—it’s your blank canvas in an established and upscale neighborhood. The subdivision setting means you don’t have to compromise on community standards, curb appeal, or resale value. At the same time, the acreage gives you freedom and space rarely found at this size in a subdivision so close to town.

Whether you’re thinking of a private estate, a family compound, or simply land to enjoy and build when you’re ready — this tract fits all of that.

From the moment you drive in the one-way entrance and wind through the trees, you’ll understand the appeal: it’s peaceful, the terrain varied and interesting, the potential enormous.

Next Steps

- **See the new photo gallery** — updated high-quality images will show the cleared trails, wooded areas, and building sites.
- **Review the subdivision documents** (Bill of Assurances, Plat) in the listing documents to ensure you’re comfortable with the building requirements.
- **Schedule a walk-through of the land** — we can show you ideal home sites, utility access, and the trails.
- **Act now with this new price.** At \$100 K for 9+ acres in Southside’s premier subdivision, this is an outstanding value.

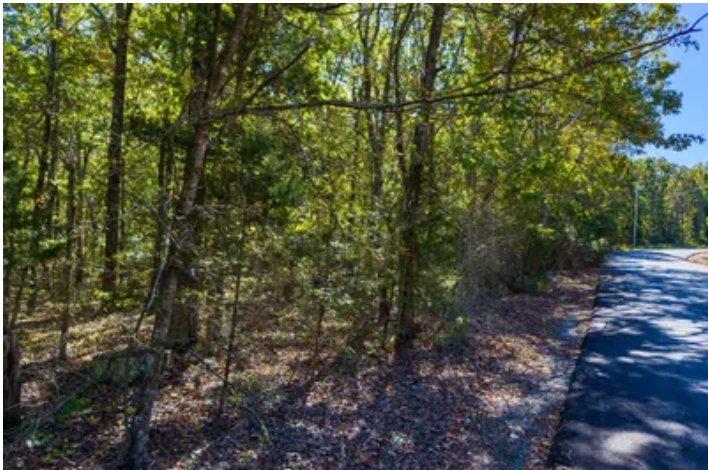
Proudly listed with **Mossy Oak Properties Selling Arkansas - Southside Branch**, [870-569-4600](tel:870-569-4600) .

Call or text Listing Agent, Sarah Perkins at [501-691-2600](tel:501-691-2600) for a tour or more information.

Equal Housing Opportunity. www.WeSellArkansas.com.



9 + acres of luxury living in Vista Pointe – subdivision quiet meets country freedom
Southside, AR / Independence County



9 + acres of luxury living in Vista Pointe – subdivision quiet meets country freedom
Southside, AR / Independence County

Locator Map



9 + acres of luxury living in Vista Pointe – subdivision quiet meets country freedom
Southside, AR / Independence County

Locator Map



9 + acres of luxury living in Vista Pointe – subdivision quiet meets country freedom
Southside, AR / Independence County

Satellite Map



DISCLAIMERS

Information in this brochure is provided solely for information purposes and does not constitute an offer to sell or advertise real estate outside the states in which broker or agent licensed. The information presented has been obtained from sources deemed to be reliable, but is not guaranteed or warranted by the agent, broker, or the sellers of these properties. This offering is subject to errors, omissions, prior sale, price change, correction or withdrawal from the market without notice. All references to age, square footage, income, expenses, acreage, carrying capacity, and land classification, etc. are approximate. Prospective buyers are chargeable with and expected to conduct their own independent investigation of the information and the property and to rely only on those results. Sellers reserve the right to accept or reject any and all offers without liability to any buyer or cooperating broker.

Maps are provided for illustration purposes only, the accuracy is not warranted. Parcels on interactive maps are not adjusted to match aerial backgrounds. This information is for reference purposes only and is not a legal document. Data maps contain errors. The seller and seller's agent are making known to all potential buyers that there may be variations between the location of the existing fence lines and the legal description of the deeded property. Seller and seller's agent make no warranties with regard to the location of the fence lines in relationship to the deeded property lines, nor does the Seller make any warranties or representations with regard to the specific acreage contained within the fenced property lines. Seller is selling the property in an "as is" condition, which includes the location of the fences as they exist. Boundaries shown on the accompanying maps are approximate, based on county parcel data. The maps are not to scale. The accuracy of the maps is not guaranteed. Prospective buyers are encouraged to verify fence lines, deeded property lines and acreages using a licensed surveyor at their own expense.

Mossy Oak Properties Selling Arkansas

8111 N St Louis St

Cave City, AR 72521

(870) 495-2123

<https://wesellarkansas.com/>

