

**6 Ac - 2 Parcels Combined**  
**Park Road**  
**Ridgeway, SC 29130**

**\$50,000**  
**6± Acres**  
**Fairfield County**



**MORE INFO ONLINE:**

<https://scacres.com/>



**6 Ac - 2 Parcels Combined**  
**Ridgeway, SC / Fairfield County**

---

**SUMMARY**

**Address**

Park Road

**City, State Zip**

Ridgeway, SC 29130

**County**

Fairfield County

**Type**

Hunting Land, Undeveloped Land, Lot

**Latitude / Longitude**

34.292234 / -80.859562

**Acreage**

6

**Price**

\$50,000

**Property Website**

<https://scacres.com/property/6-ac-2-parcels-combined-fairfield-south-carolina/85935/>



**MORE INFO ONLINE:**

<https://scacres.com/>

**6 Ac - 2 Parcels Combined**  
**Ridgeway, SC / Fairfield County**

---

**PROPERTY DESCRIPTION**

2 separate lots of 4 acres and 2 acres to be sold together as 6 acres. The two tracts are each located on the same street in the Centerville Community of Ridgeway. Both parcels are wooded with a mixture of mature oaks and pines. Each has paved road frontage on Park Road and would require a well and septic system for utilities. There are areas on both tracts that are ideal for a homesite and are perfect for new construction. The topography varies, and a seasonal drain passes through the properties. These lots are located in a friendly, rural area of eastern Fairfield County. The owners will only sell these tracts as a combination.



**6 Ac - 2 Parcels Combined**  
**Ridgeway, SC / Fairfield County**

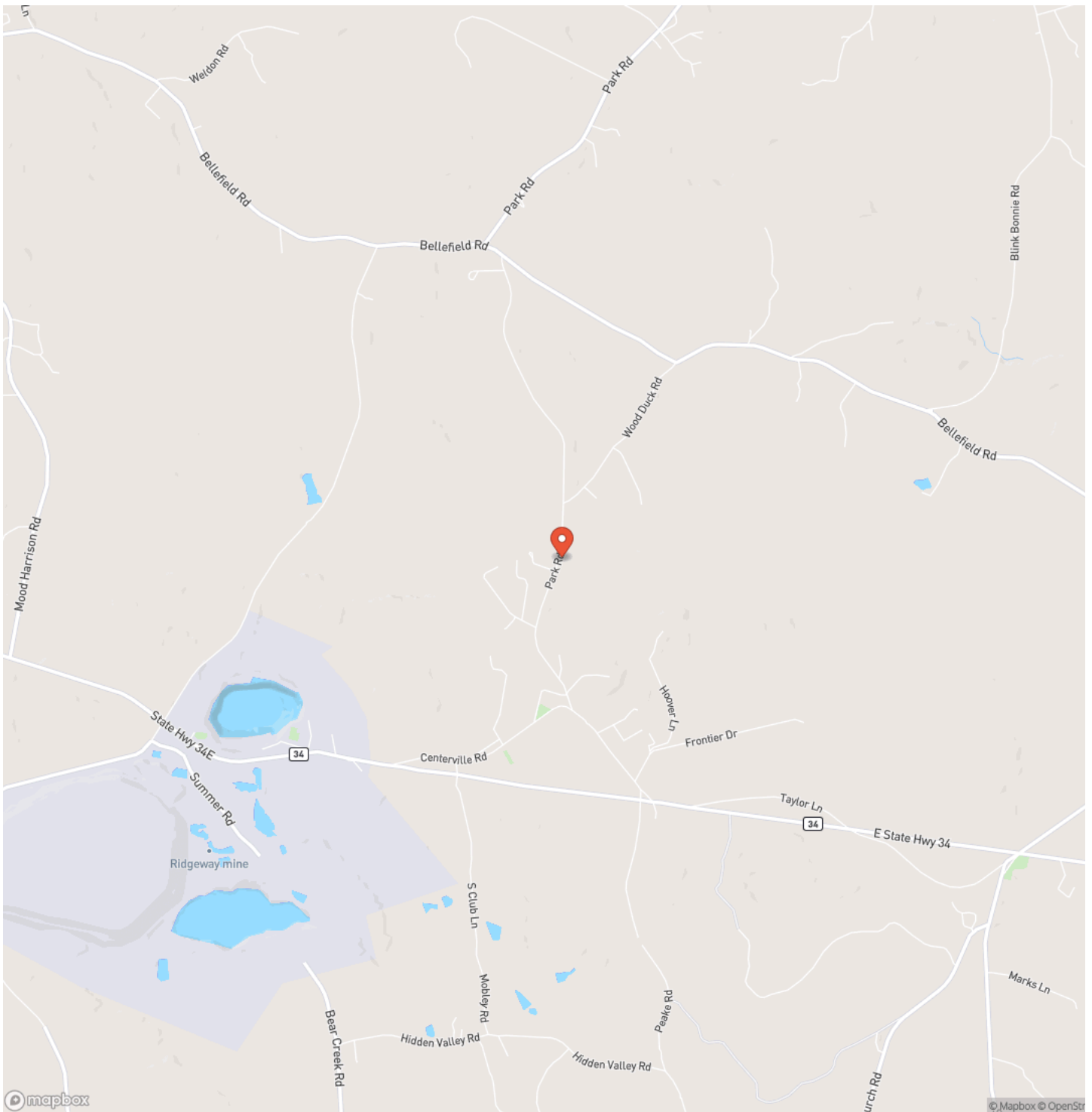
---



**MORE INFO ONLINE:**

<https://scacres.com/>

## Locator Map

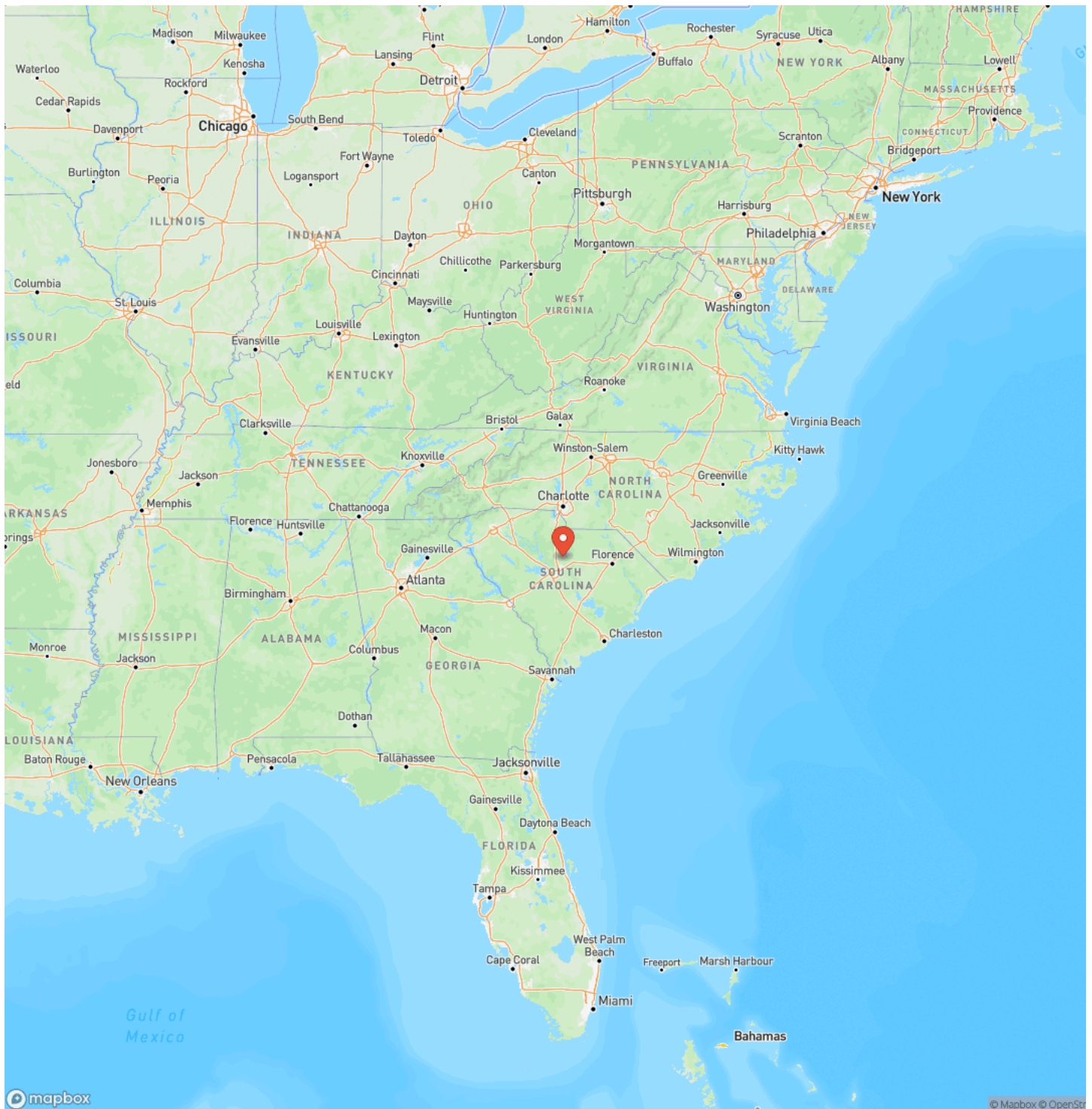


**MORE INFO ONLINE:**

<https://scacres.com/>

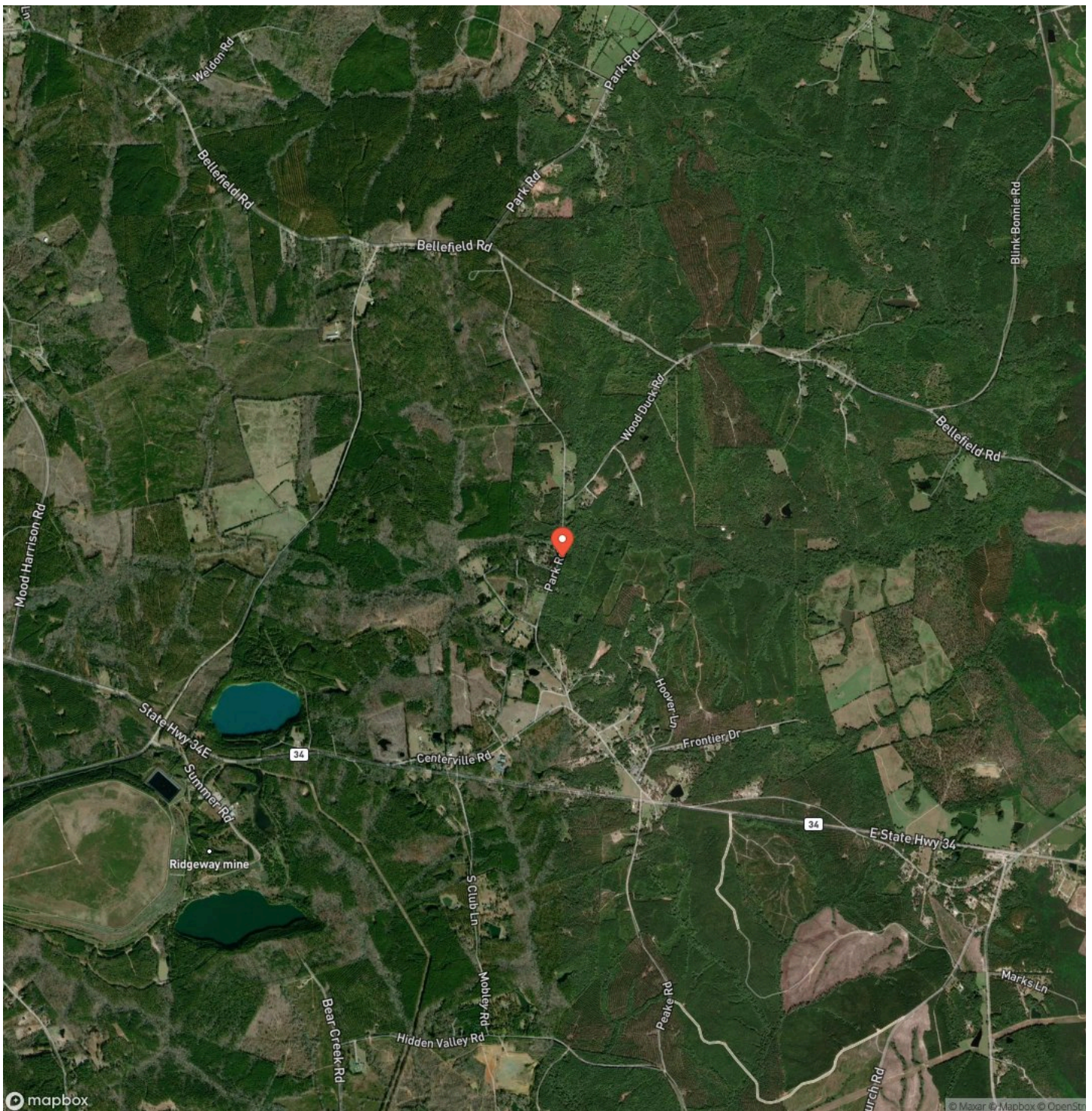


## Locator Map





## Satellite Map



**MORE INFO ONLINE:**

<https://scacres.com/>

## 6 Ac - 2 Parcels Combined Ridgeway, SC / Fairfield County

## LISTING REPRESENTATIVE

**For more information contact:**



### Representative

Russ Brown

## Mobile

(803) 718-0911

## Office

(803) 337-7405

## Email

russ@scacres.com

**Address**

## City / State / Zip

## NOTES

This image shows a blank sheet of white paper with horizontal ruling lines. The lines are evenly spaced and extend across the width of the page. There are no margins, text, or other markings on the paper.

**MORE INFO ONLINE:**



[illegible]

## **DISCLAIMERS**

Broker and Commission Disclosure: Commission splits will be at the sole discretion of Brown and Company; variable commission may apply. The Buyer's Agent must be identified upon first contact with the Listing Firm, and the Buyer's Agent must be present at the initial property tour to participate in the real estate commission.



---

**Brown & Company**  
485 US Hwy 321 Byp S  
Winnsboro, SC 29180  
(803) 337-7405  
<https://scacres.com/>

---