

**0.46 acres of Residential Property with a Home For Sale
in Hoke County NC!**
145 Ironwood Way
Raeford, NC 28376

\$299,900
0.460± Acres
Hoke County



0.46 acres of Residential Property with a Home For Sale in Hoke County NC!
Raeford, NC / Hoke County

SUMMARY

Address

145 Ironwood Way

City, State Zip

Raeford, NC 28376

County

Hoke County

Type

Residential Property, Single Family

Latitude / Longitude

34.9893 / -79.1209

Dwelling Square Feet

2037

Bedrooms / Bathrooms

3 / 2.5

Acreage

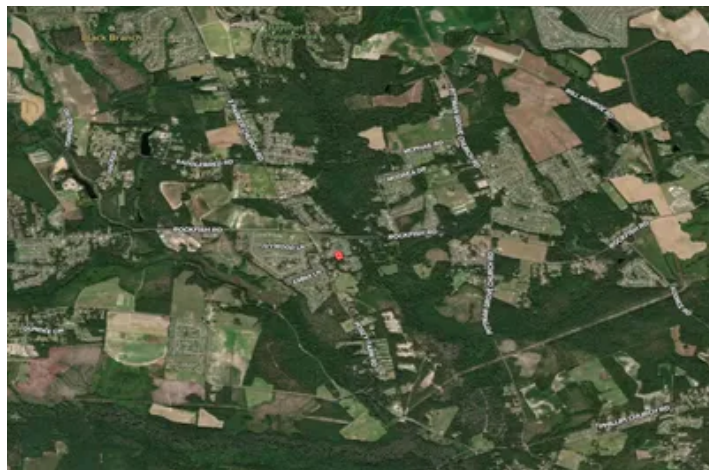
0.460

Price

\$299,900

Property Website

<https://www.mossyoakproperties.com/property/0-46-acres-of-residential-property-with-a-home-for-sale-in-hoke-county-nc-hoke-north-carolina/80597/>



0.46 acres of Residential Property with a Home For Sale in Hoke County NC! Raeford, NC / Hoke County

PROPERTY DESCRIPTION

For immediate assistance with this listing call Eric Schwind [910-727-5579](tel:910-727-5579).

3 Bedrooms, 2.5 bathrooms ,2 car Garage, Minutes from Fort Liberty! Call Eric Schwind [910-727-5579](tel:910-727-5579) to schedule a showing today!

Welcome to your new home, perfectly tucked away on a peaceful cul-de-sac, offering the ideal blend of comfort, space, and convenience. This well maintained two-story home features 3 bedrooms, 2.5 bathrooms, and a spacious bonus room, making it a perfect fit for families of all sizes or anyone looking for flexible living space.

As you enter the home, you'll be greeted by the warmth of gorgeous hardwood flooring that flows seamlessly throughout the great room, kitchen, and dining area/home office. The open-concept layout creates a natural flow between rooms, making it easy to entertain guests or enjoy quiet evenings at home. The kitchen offers plenty of cabinet space, a functional layout, and the room you need to prepare meals and gather with family and friends.

Upstairs, you'll find all three bedrooms, thoughtfully positioned for privacy and comfort all with new carpet. The spacious primary suite includes an en-suite bath and ample closet space. Also upstairs is a large bonus room—perfect for a playroom, home gym, media room, or even a fourth bedroom. Plus, the convenient second-floor laundry room means no more carrying loads of clothes up and down the stairs.

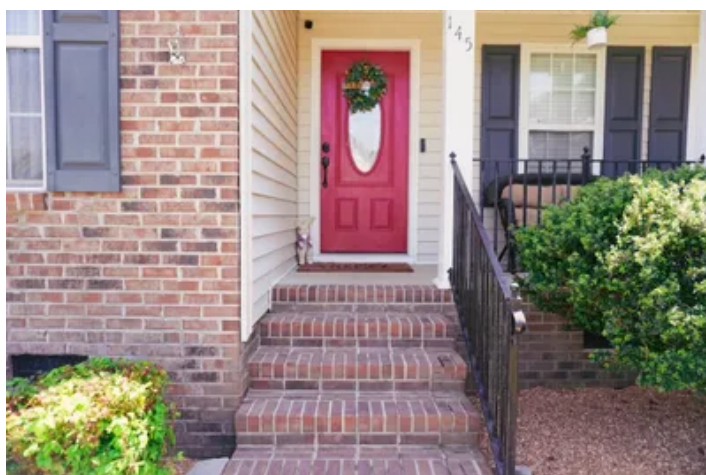
Step outside and enjoy the generously sized backyard, ideal for hosting weekend BBQs, gardening, or creating your own personal retreat. Whether you're looking to relax or entertain, this outdoor space offers endless possibilities including an above ground pool.

Located just a short drive from Fayetteville, NC, you'll love the easy access to shopping, dining, entertainment, and all the amenities the city has to offer. And the best part? NO city taxes, making this home not only beautiful but also a smart financial investment.

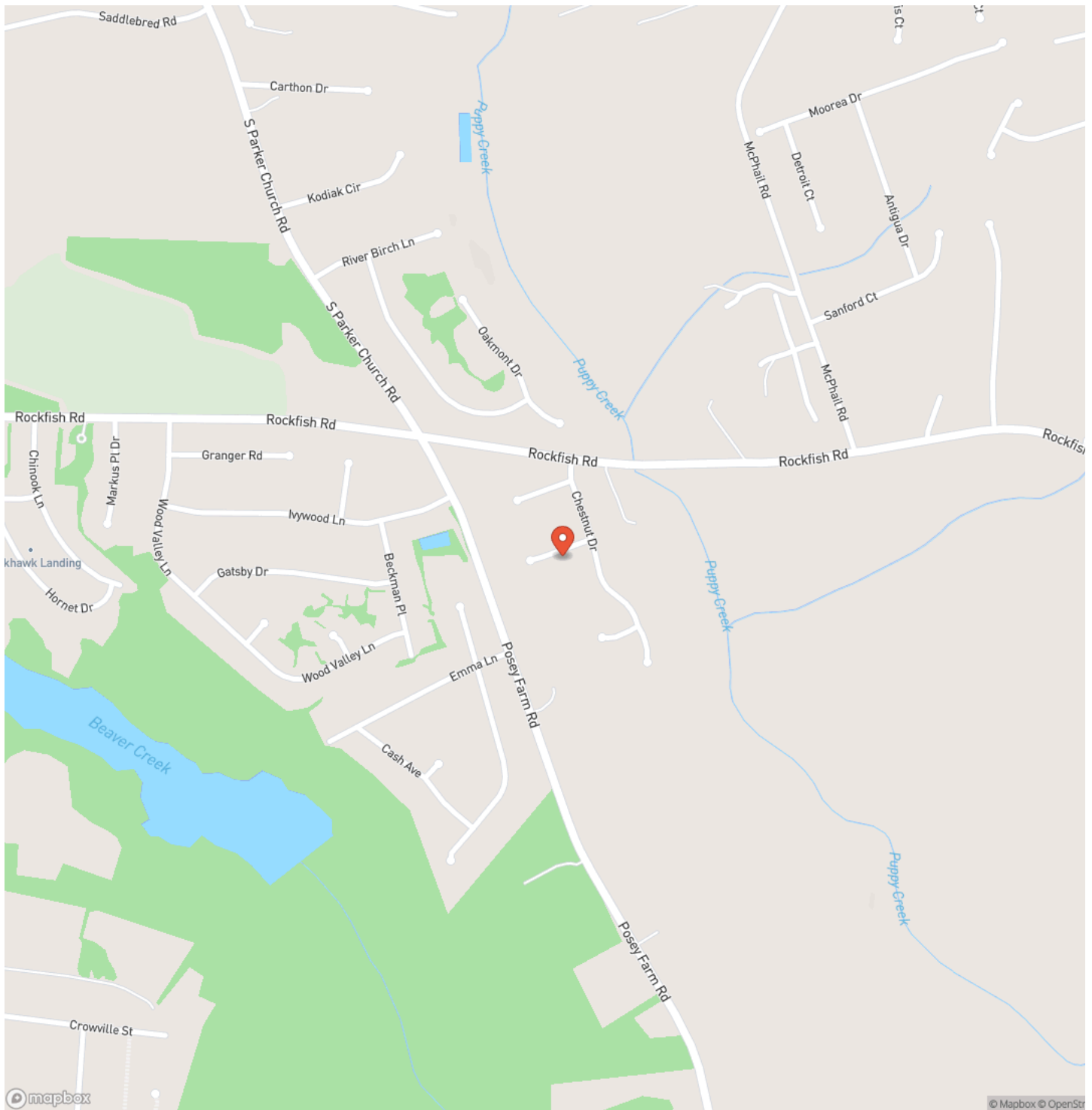
Don't miss your opportunity to make this incredible property your new home—schedule your showing today!

For more information on this and other land for sale in Hoke County, contact Eric Schwind at [\(910\) 727-5579](tel:910-727-5579) or by email at eschwind@mossyoakproperties.com, or visit landandfarmsrealty.com.

0.46 acres of Residential Property with a Home For Sale in Hoke County NC!
Raeford, NC / Hoke County

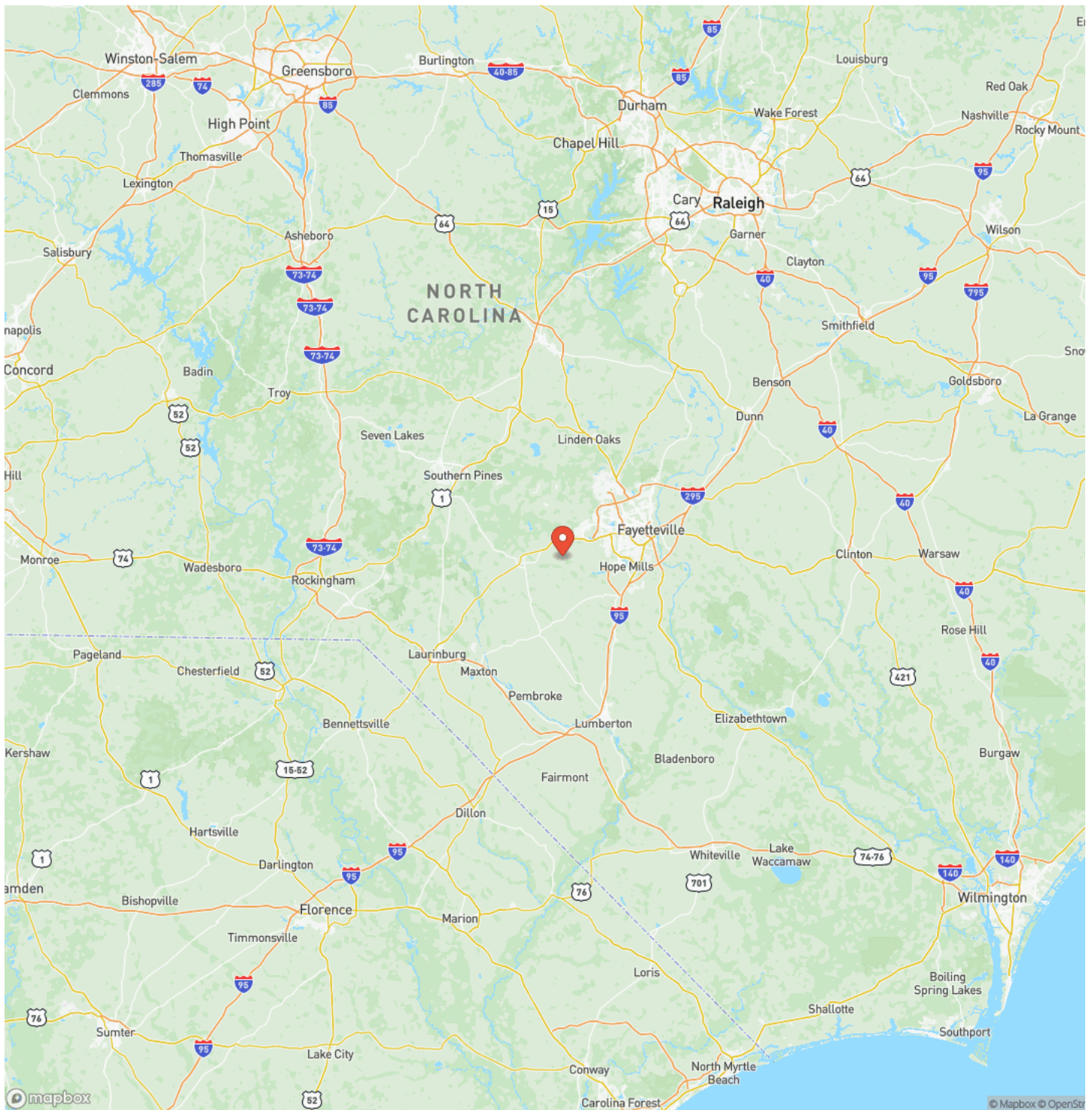


Locator Map



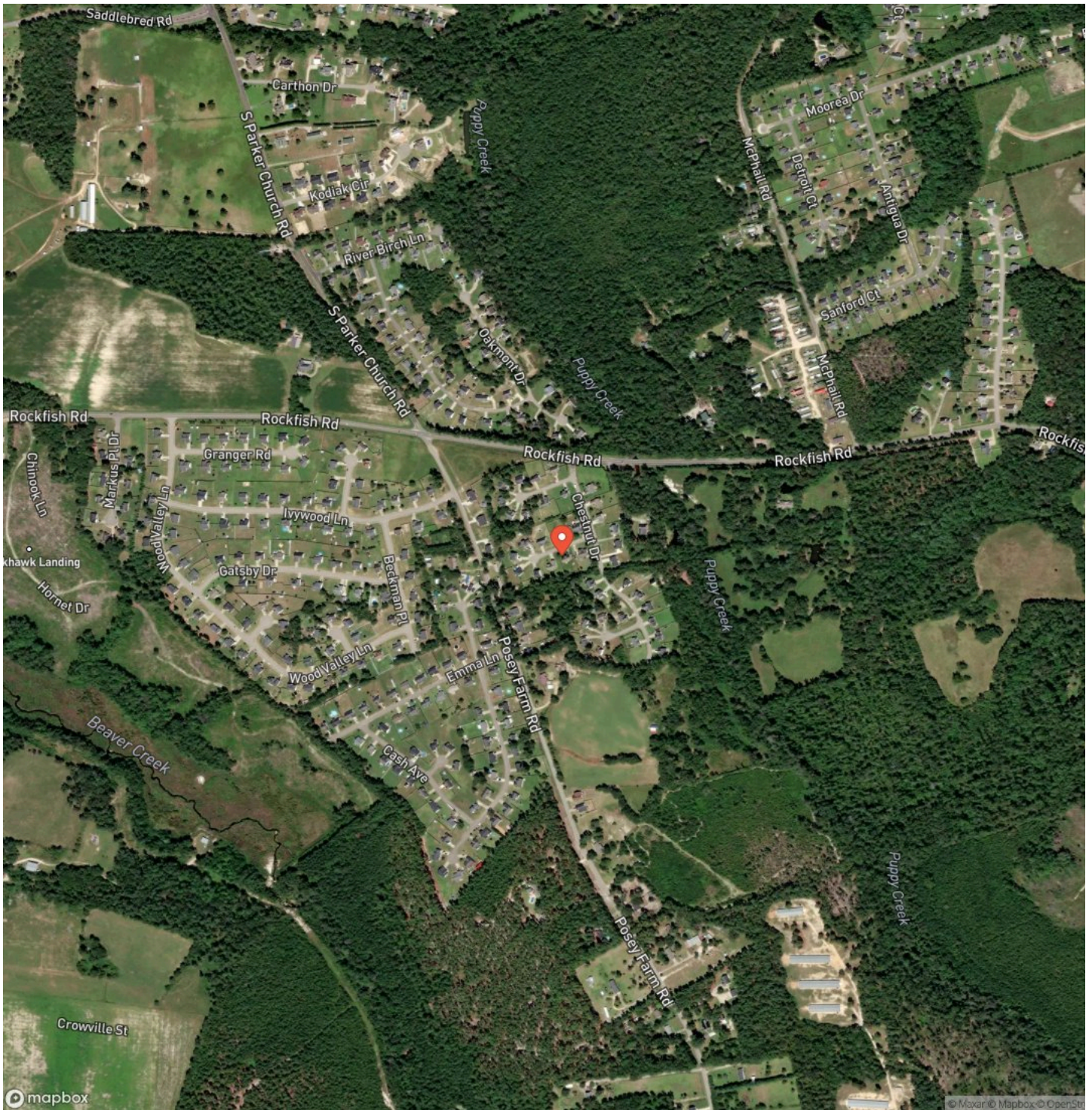
0.46 acres of Residential Property with a Home For Sale in Hoke County NC!
Raeford, NC / Hoke County

Locator Map



0.46 acres of Residential Property with a Home For Sale in Hoke County NC!
Raeford, NC / Hoke County

Satellite Map



0.46 acres of Residential Property with a Home For Sale in Hoke County NC! Raeford, NC / Hoke County

LISTING REPRESENTATIVE

For more information contact:



Representative

Eric Schwind

Mobile

(910) 727-5579

Office

(844) 480-5263

Email

eschwind@mossyoakproperties.com

Address

626 Lewis Road

City / State / Zip

NOTES

This image shows a blank sheet of white paper with horizontal ruling lines. The lines are evenly spaced and run across the width of the page. There are no margins, text, or other markings on the paper.

This image shows a full page of blank white paper with horizontal ruling lines. The lines are evenly spaced and run across the width of the page, providing a template for writing or drawing. There are no margins, text, or other markings present.



www.landandfarmsrealty.com

DISCLAIMERS

Information in this brochure is provided solely for information purposes and does not constitute an offer to sell or advertise real estate outside the states in which broker or agent licensed. The information presented has been obtained from sources deemed to be reliable, but is not guaranteed or warranted by the agent, broker, or the sellers of these properties. This offering is subject to errors, omissions, prior sale, price change, correction or withdrawal from the market without notice. All references to age, square footage, income, expenses, acreage, carrying capacity, and land classification, etc. are approximate. Prospective buyers are chargeable with and expected to conduct their own independent investigation of the information and the property and to rely only on those results. Sellers reserve the right to accept or reject any and all offers without liability to any buyer or cooperating broker.

Maps are provided for illustration purposes only, the accuracy is not warranted. Parcels on interactive maps are not adjusted to match aerial backgrounds. This information is for reference purposes only and is not a legal document. Data maps contain errors. The seller and seller's agent are making known to all potential buyers that there may be variations between the location of the existing fence lines and the legal description of the deeded property. Seller and seller's agent make no warranties with regard to the location of the fence lines in relationship to the deeded property lines, nor does the Seller make any warranties or representations with regard to the specific acreage contained within the fenced property lines. Seller is selling the property in an "as is" condition, which includes the location of the fences as they exist. Boundaries shown on the accompanying maps are approximate, based on county parcel data. The maps are not to scale. The accuracy of the maps is not guaranteed. Prospective buyers are encouraged to verify fence lines, deeded property lines and acreages using a licensed surveyor at their own expense.

Mossy Oak Properties Land and Farms Realty
101 Budleigh Street, Suite F
Manteo, NC 27954
(844) 480-5263
www.landandfarmsrealty.com

