

232 Renfroe_Canton_MadisonCo
232 Renfroe Road
Canton, MS 39046

\$350,000
27.200± Acres
Madison County



232 Renfroe_Canton_MadisonCo
Canton, MS / Madison County

SUMMARY

Address

232 Renfroe Road

City, State Zip

Canton, MS 39046

County

Madison County

Type

Farms, Hunting Land, Recreational Land, Horse Property, Single Family

Latitude / Longitude

32.600672 / -89.925041

Dwelling Square Feet

1711

Bedrooms / Bathrooms

3 / 1

Acreage

27.200

Price

\$350,000

Property Website

https://www.mossyoakproperties.com/property/232-renfroe_canton_madisonco-madison-mississippi/84328/



PROPERTY DESCRIPTION

Looking for the perfect spot to build your dream mini-farm or hunting retreat?

Welcome to 232 Renfroe Road, Canton, MS – a scenic 27.2-acre property full of potential and charm.

Nestled in a peaceful rural setting, this versatile tract offers a blend of open pasture and light timber, with a proven track record for excellent **deer hunting** and frequent **turkey sightings** across the property.

At the heart of the land sits a **1,711 sq. ft. home**, ideal for those looking for:

- A **quiet country retreat**
- A **fixer-upper project** with investment potential
- A **comfortable deer camp** with modern conveniences

From the **front porch**, you'll enjoy breathtaking **sunrise and sunset views** that make country living feel like a dream.

Property Highlights:

- 27.2 +/- beautiful acres
- Excellent deer and turkey hunting
- Spacious 1,711 sq. ft. home on-site
- Ideal for a mini-farm, weekend retreat, or hunting getaway
- Serene setting with wide-open views and peaceful surroundings

Whether you're looking to start your own hobby farm, create a secluded weekend getaway, or simply invest in rural Mississippi land, **232 Renfroe Road offers endless opportunities.**

Don't miss your chance to walk this beautiful property – schedule a tour today!

Les Penn, CLS

Mossy Oak Properties, BRE

108 Lone Wolf Dr.

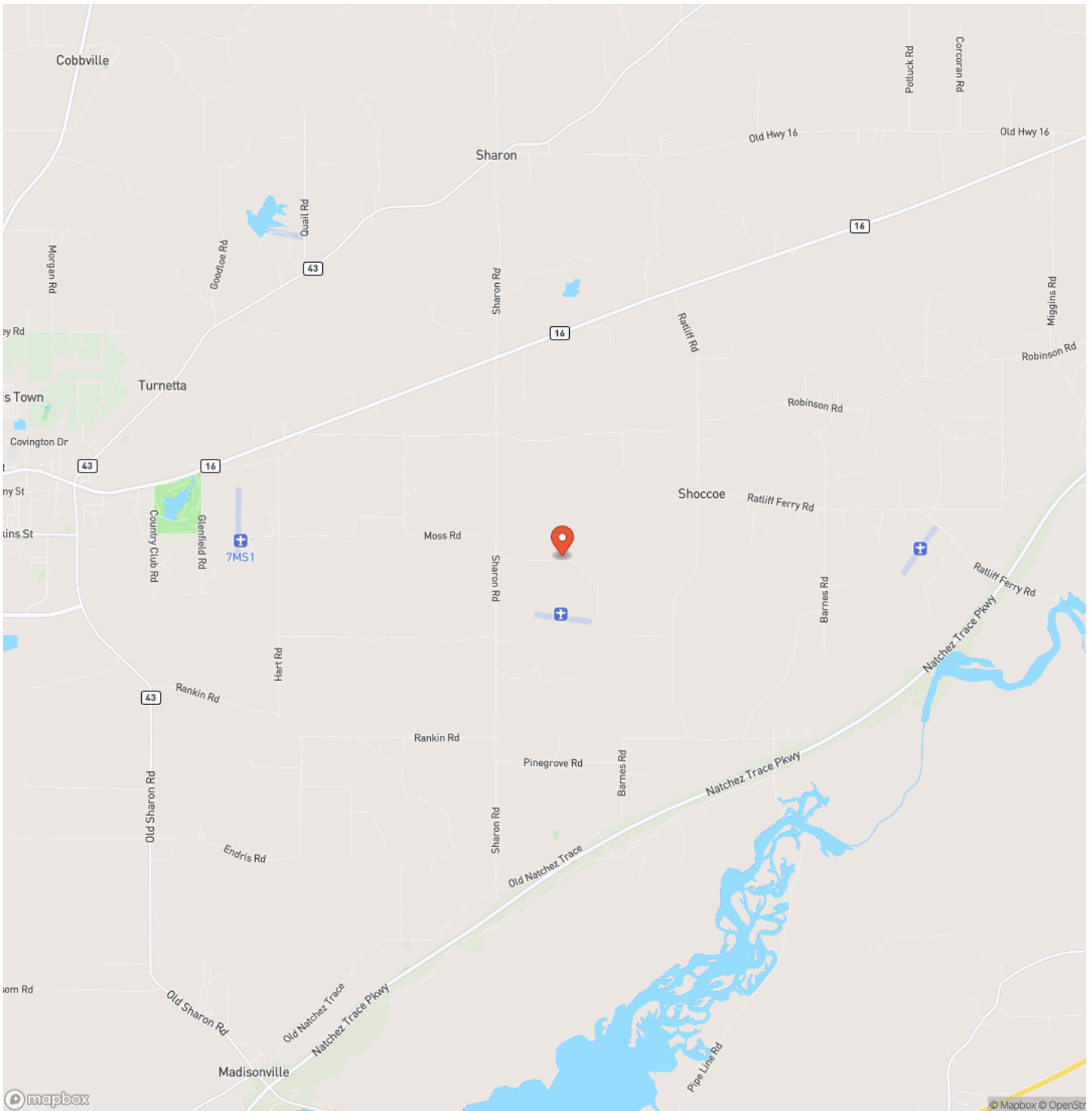
Madison, Ms. 39110

[601-260-5544](tel:601-260-5544)

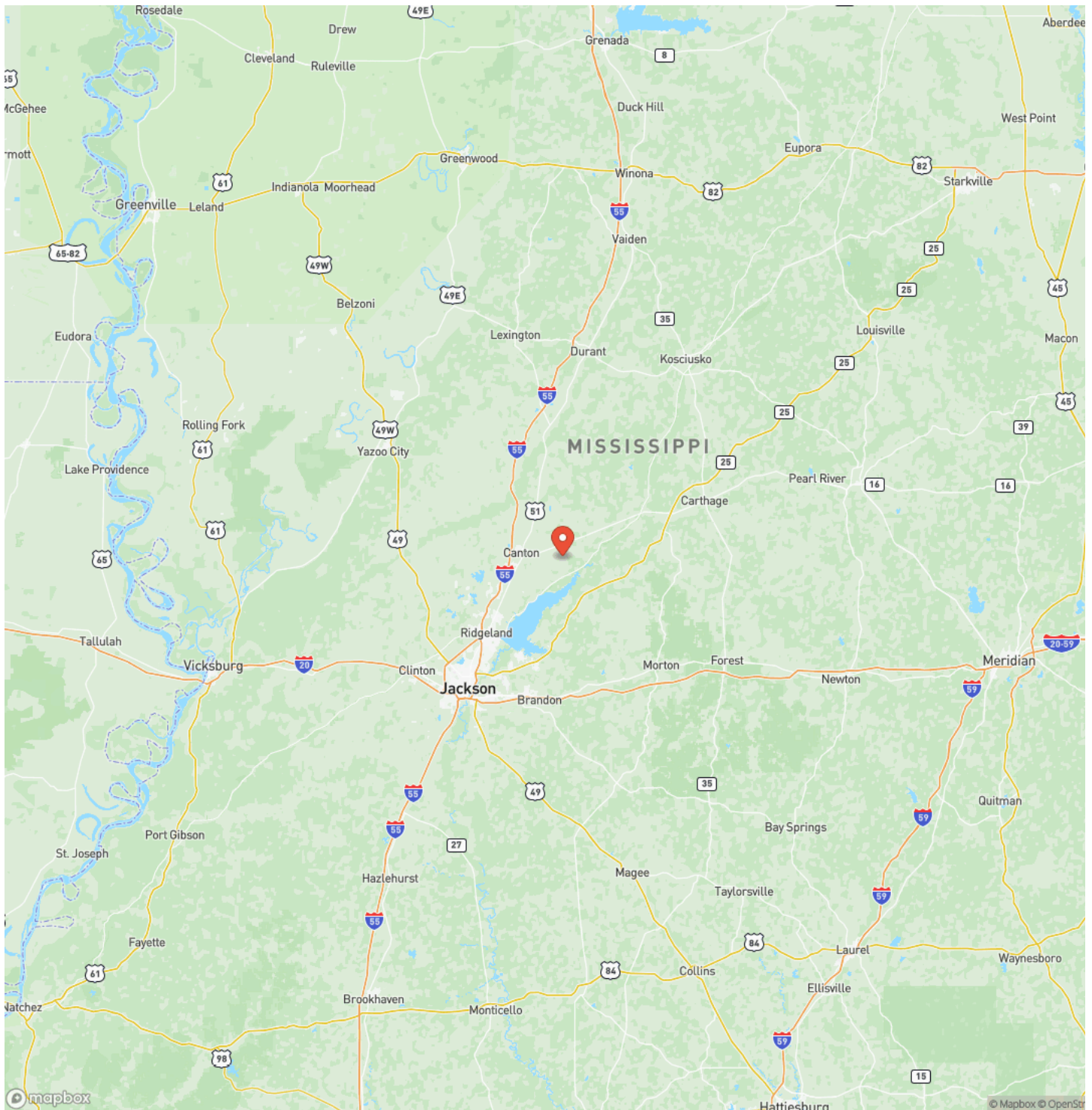
lpenn@mossyoakproperties.com



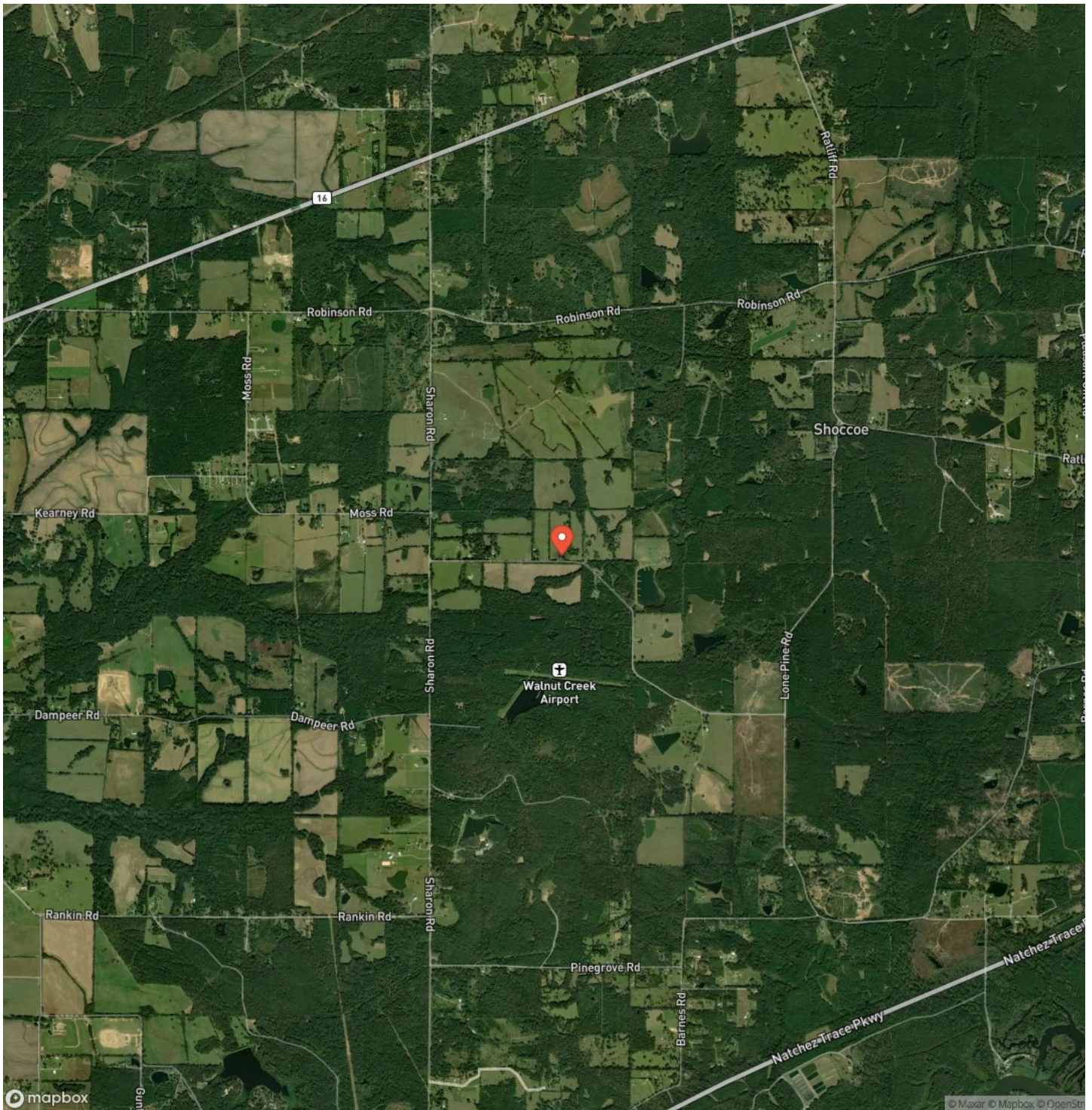
Locator Map



Locator Map



Satellite Map



LISTING REPRESENTATIVE

For more information contact:



Representative

Les Penn

Mobile

(601) 260-5544

Office

(662) 495-1121

Email

lpenn@mossyoakproperties.com

Address

108 Lone Wolf Dr.

City / State / Zip

NOTES

[illegible]

This image shows a single sheet of white paper with horizontal ruling lines. The lines are evenly spaced and run across the width of the page. There are no margins, text, or other markings on the paper.



MossyOakProperties.com

DISCLAIMERS

House sold as is.



Mossy Oak Properties Bottomland Real Estate

5795 Highway 45 Alt S

West Point, MS 39773

(662) 495-1121

MossyOakProperties.com

