

17± Acres | Big Timber & Multiple Homesites - McCalla,
AL
6865 Old Tuscaloosa Hwy
McCalla, AL 35111

\$215,000
17± Acres
Jefferson County



17± Acres | Big Timber & Multiple Homesites – McCalla, AL
McCalla, AL / Jefferson County

SUMMARY

Address

6865 Old Tuscaloosa Hwy

City, State Zip

McCalla, AL 35111

County

Jefferson County

Type

Undeveloped Land

Latitude / Longitude

33.311897 / -87.044042

Acreage

17

Price

\$215,000

Property Website

<https://thelandcrafters.com/detail/17-acres-big-timber-multiple-homesites-mccalla-al/jefferson/alabama/102485/>



17± Acres | Big Timber & Multiple Homesites – McCalla, AL McCalla, AL / Jefferson County

PROPERTY DESCRIPTION

Discover the perfect blend of privacy, convenience, and opportunity with this beautiful 17± acre wooded tract in McCalla, Alabama. Featuring mature, large timber throughout, this property offers a serene natural setting with multiple potential homesites, making it ideal for a private estate or future development.

With approximately 385 feet of road frontage on Old Tuscaloosa Highway, along with an additional access point from an adjacent neighborhood, the property provides excellent accessibility and flexibility. The land is mostly flat with gentle elevation changes, creating an easy build environment while still offering character and drainage.

Located just over a mile from I-20, this property combines peaceful country living with quick access to nearby cities—only 25 minutes to Birmingham and 35 minutes to Tuscaloosa.

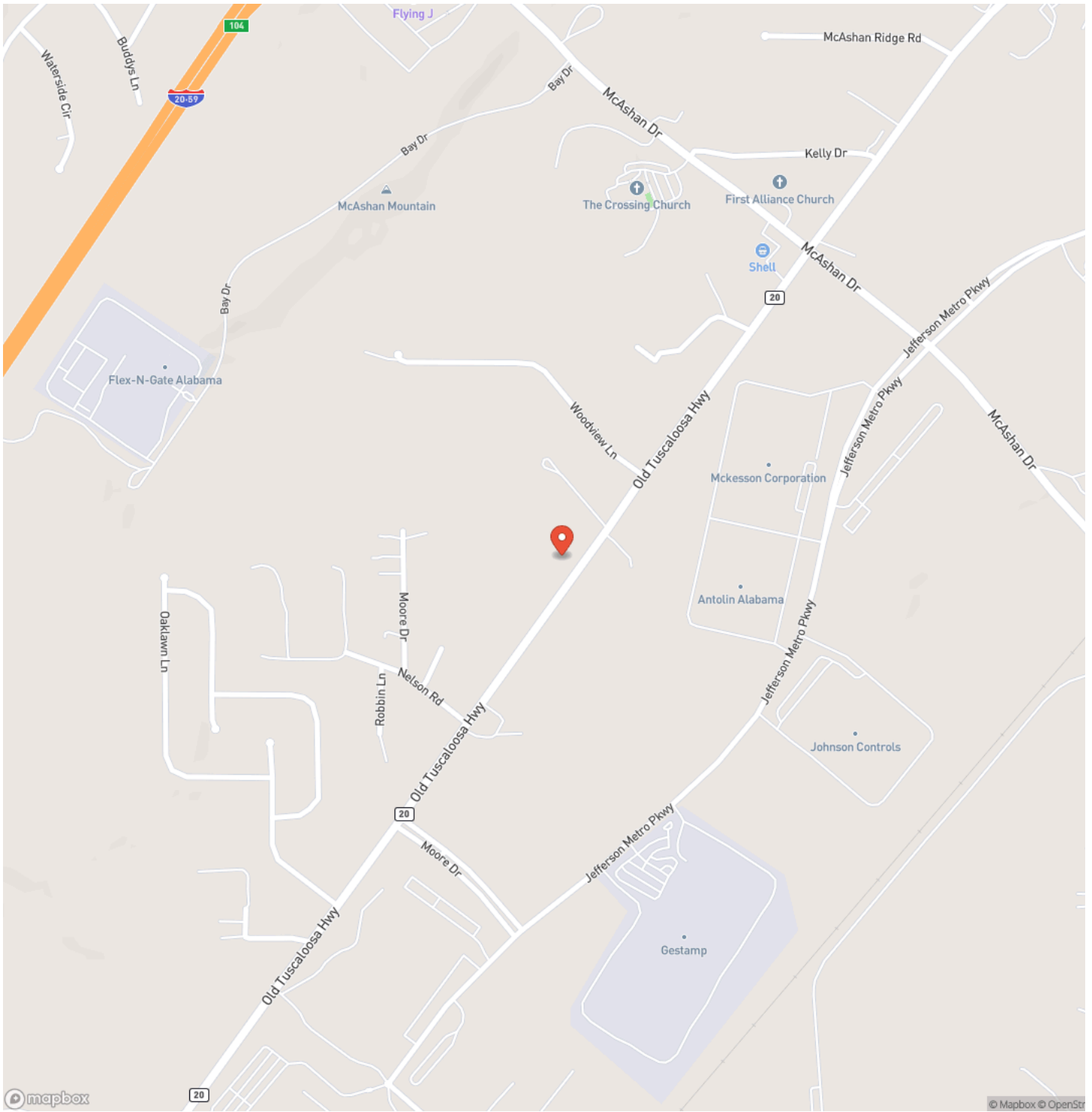
Whether you're looking to build your dream home tucked away in the woods or explore development potential, this versatile tract in Jefferson County is a rare find.



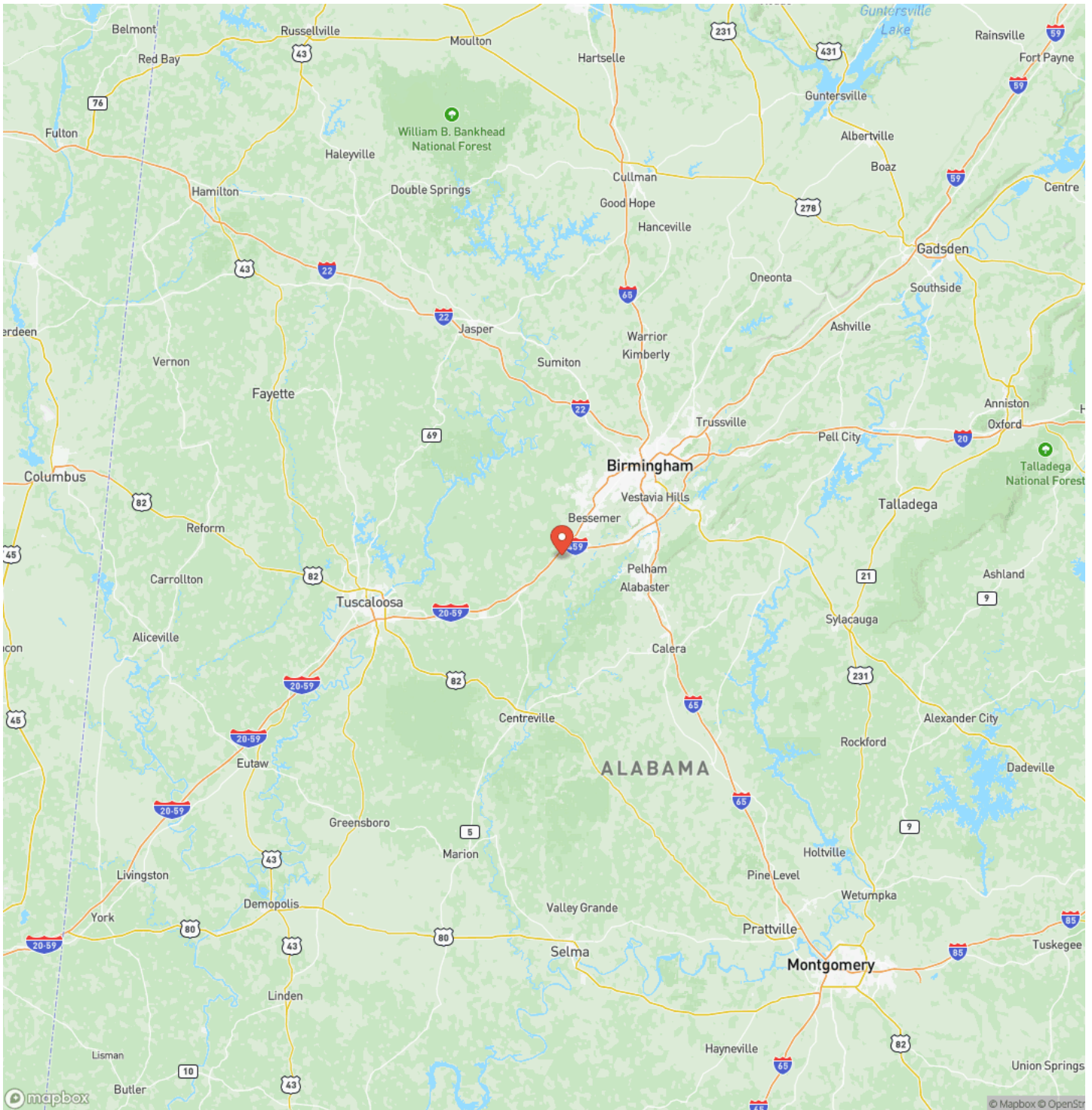
17± Acres | Big Timber & Multiple Homesites – McCalla, AL
McCalla, AL / Jefferson County



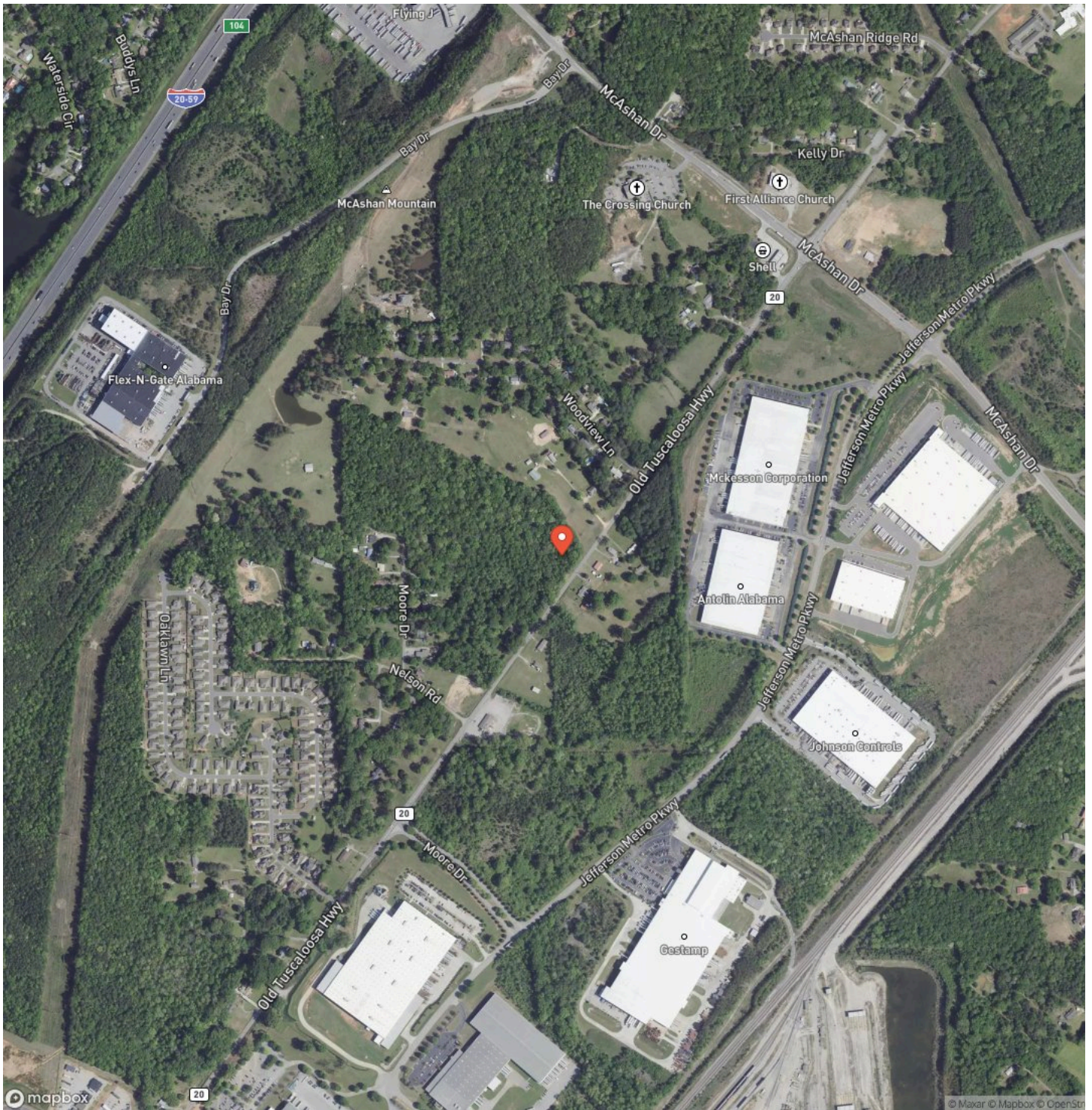
Locator Map



Locator Map



Satellite Map



DISCLAIMERS

Information in this brochure is provided solely for information purposes and does not constitute an offer to sell or advertise real estate outside the states in which broker or agent licensed. The information presented has been obtained from sources deemed to be reliable, but is not guaranteed or warranted by the agent, broker, or the sellers of these properties. This offering is subject to errors, omissions, prior sale, price change, correction or withdrawal from the market without notice. All references to age, square footage, income, expenses, acreage, carrying capacity, and land classification, etc. are approximate. Prospective buyers are chargeable with and expected to conduct their own independent investigation of the information and the property and to rely only on those results. Sellers reserve the right to accept or reject any and all offers without liability to any buyer or cooperating broker.

Maps are provided for illustration purposes only, the accuracy is not warranted. Parcels on interactive maps are not adjusted to match aerial backgrounds. This information is for reference purposes only and is not a legal document. Data maps contain errors. The seller and seller's agent are making known to all potential buyers that there may be variations between the location of the existing fence lines and the legal description of the deeded property. Seller and seller's agent make no warranties with regard to the location of the fence lines in relationship to the deeded property lines, nor does the Seller make any warranties or representations with regard to the specific acreage contained within the fenced property lines. Seller is selling the property in an "as is" condition, which includes the location of the fences as they exist. Boundaries shown on the accompanying maps are approximate, based on county parcel data. The maps are not to scale. The accuracy of the maps is not guaranteed. Prospective buyers are encouraged to verify fence lines, deeded property lines and acreages using a licensed surveyor at their own expense.

Mossy Oak Properties Alabama Land Crafters
4373 Marler Road
Pike Road, AL 36064
(334) 277-6501
<https://thelandcrafters.com/>

