

20+/- acres of Residential/Agriculture Land For Sale in Cabarrus County NC!
Off Cauble Rd
Mount Pleasant, NC 28124

\$500,000
20± Acres
Cabarrus County



**20+/- acres of Residential/Agriculture Land For Sale in Cabarrus County NC!
Mount Pleasant, NC / Cabarrus County**

SUMMARY

Address

Off Cauble Rd null

City, State Zip

Mount Pleasant, NC 28124

County

Cabarrus County

Type

Farms, Recreational Land, Horse Property

Latitude / Longitude

35.3529 / -80.4077

Acreage

20

Price

\$500,000

Property Website

<https://www.mossyoakproperties.com/property/20-acres-of-residential-agriculture-land-for-sale-in-cabarrus-county-nc-cabarrus/north-carolina/100697/>



20+/- acres of Residential/Agriculture Land For Sale in Cabarrus County NC! Mount Pleasant, NC / Cabarrus County

PROPERTY DESCRIPTION

Find Your Peace on 20 Beautiful Acres!

This 20-acre property in southern Cabarrus County is more than just land-it is the blank canvas for the quiet, rural life you've been dreaming of.

Space to Breathe

Most of this property features gently rolling fields that were once used for farming. Whether you want to start a small homestead, keep horses, or simply enjoy the view of your own private estate, these open spaces offer endless possibilities. Tucked away on the land, you'll also find about two acres of tall, planted loblolly pines, providing a peaceful spot for shade and a home for local wildlife.

Ready for Your Dream Home

The guesswork has been taken out of the building. The soil has already been tested and determined to be suitable for a septic system for a single-family home. With 945 feet of paved road frontage, you have easy access and plenty of privacy. The land features a natural drain for rainwater, keeping the property beautiful and functional through every season.

The Best of Both Worlds

You can enjoy the "slow life" without being disconnected. This location puts you right in the heart of everything:

- Small Town Charm: Minutes away from Mt. Pleasant, Locust, and Midland.
- Weekend Fun: Short drives to Albemarle and Concord for shopping and dining.
- City Access: An easy commute to the energy of Charlotte.

Leave the noise and the crowds behind. Come stand in these fields, listen to the wind through the pines, and feel what it's like to finally have enough room to breathe. Call Jimmy Underwood today for your private tour of this exceptional property.

Property Notes

20 +/- acres to be surveyed out of the larger parent tract

5 miles to Mt. Pleasant

8 miles to Locust

14 miles to Midland

14 miles to Concord

15 miles to Albemarle

38 miles to Charlotte

The soil has been tested and is suitable for a 4BR single family home

The loblolly pines are approximately 19 years old

There is a power transmission line running east to west, just south of the middle of the property

The current zoning is AO



For more information on this and other land for sale in Cabarrus County, contact Jimmy Underwood at [980-734-8065](tel:980-734-8065) or by email at jimmyunderwood@mossyoakproperties.com, or visit landandfarmsrealty.com.



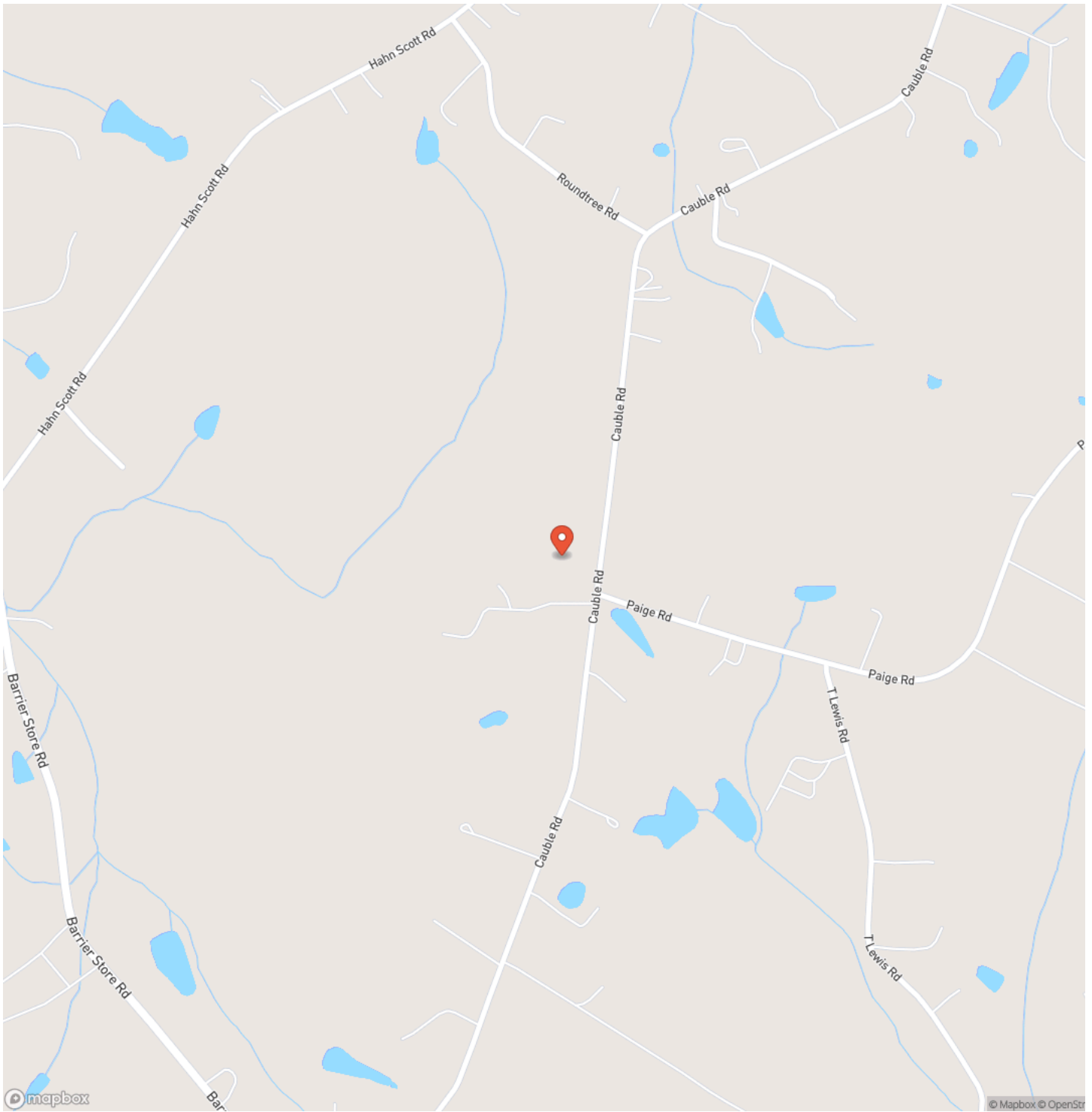
MORE INFO ONLINE:

<https://www.mossyoakproperties.com/>

20+/- acres of Residential/Agriculture Land For Sale in Cabarrus County NC!
Mount Pleasant, NC / Cabarrus County

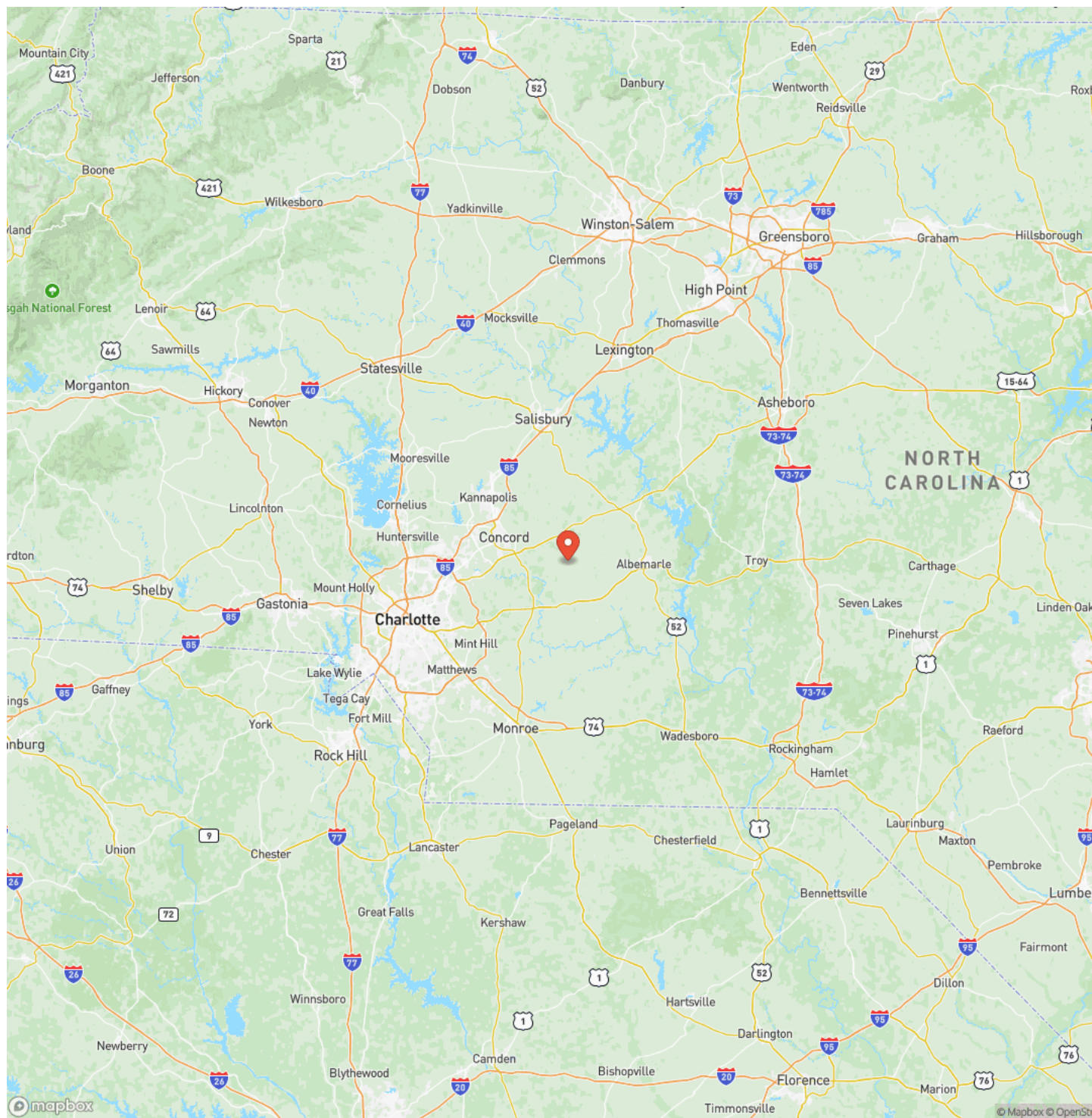


Locator Map



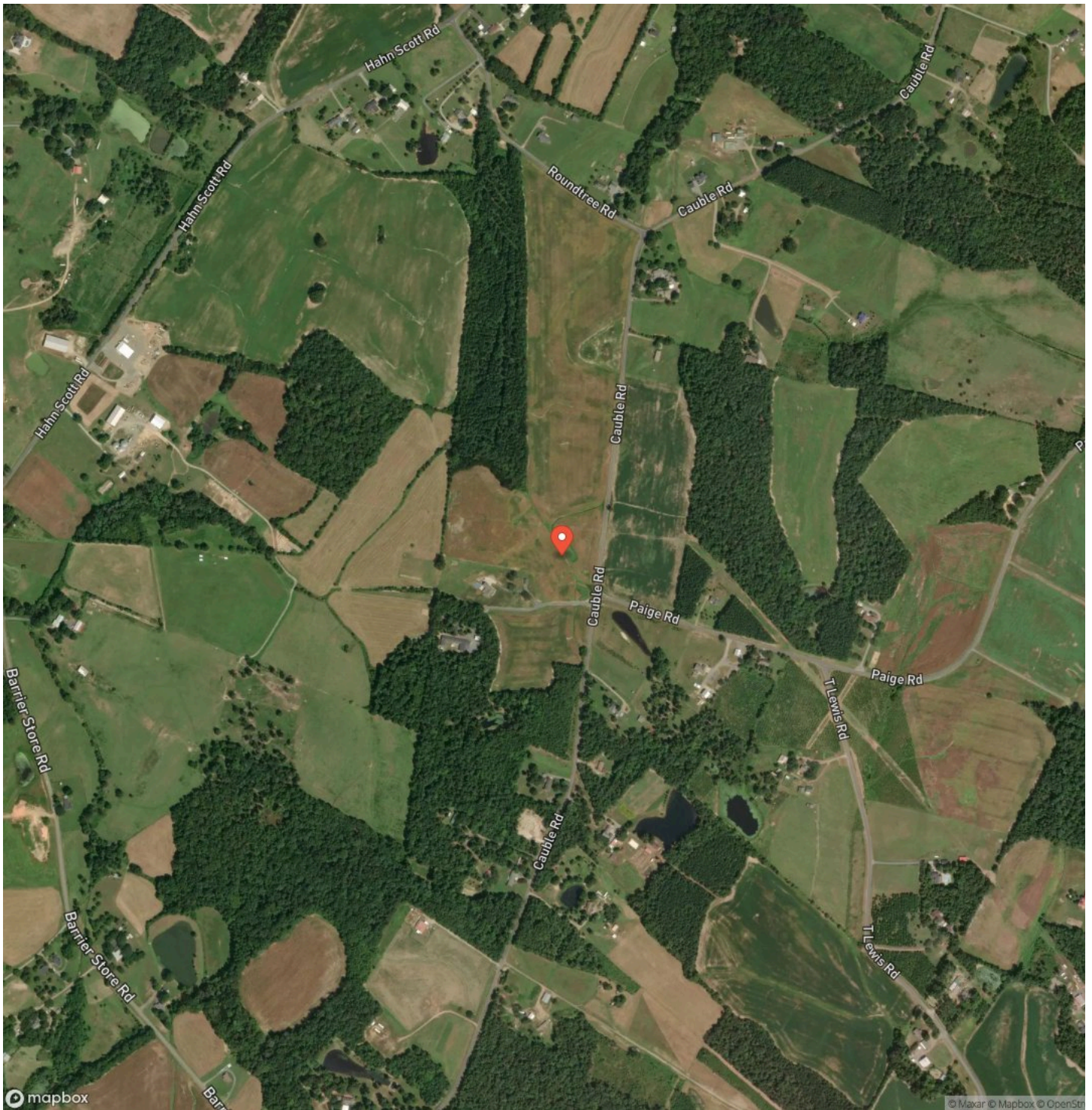
**20+/- acres of Residential/Agriculture Land For Sale in Cabarrus County NC!
Mount Pleasant, NC / Cabarrus County**

Locator Map



20+/- acres of Residential/Agriculture Land For Sale in Cabarrus County NC!
Mount Pleasant, NC / Cabarrus County

Satellite Map



DISCLAIMERS

Information in this brochure is provided solely for information purposes and does not constitute an offer to sell or advertise real estate outside the states in which broker or agent licensed. The information presented has been obtained from sources deemed to be reliable, but is not guaranteed or warranted by the agent, broker, or the sellers of these properties. This offering is subject to errors, omissions, prior sale, price change, correction or withdrawal from the market without notice. All references to age, square footage, income, expenses, acreage, carrying capacity, and land classification, etc. are approximate. Prospective buyers are chargeable with and expected to conduct their own independent investigation of the information and the property and to rely only on those results. Sellers reserve the right to accept or reject any and all offers without liability to any buyer or cooperating broker.

Maps are provided for illustration purposes only, the accuracy is not warranted. Parcels on interactive maps are not adjusted to match aerial backgrounds. This information is for reference purposes only and is not a legal document. Data maps contain errors. The seller and seller's agent are making known to all potential buyers that there may be variations between the location of the existing fence lines and the legal description of the deeded property. Seller and seller's agent make no warranties with regard to the location of the fence lines in relationship to the deeded property lines, nor does the Seller make any warranties or representations with regard to the specific acreage contained within the fenced property lines. Seller is selling the property in an "as is" condition, which includes the location of the fences as they exist. Boundaries shown on the accompanying maps are approximate, based on county parcel data. The maps are not to scale. The accuracy of the maps is not guaranteed. Prospective buyers are encouraged to verify fence lines, deeded property lines and acreages using a licensed surveyor at their own expense.

Mossy Oak Properties Land and Farms Realty
101 Budleigh Street, Suite F
Manteo, NC 27954
(844) 480-5263
<https://www.mossoakproperties.com/>

