

**29.86 acres of Recreational Land for Sale in Randolph
County NC!**
Off of Sunset Dr. N
Asheboro, NC 27205

\$268,740
29.86± Acres
Randolph County



**29.86 acres of Recreational Land for Sale in Randolph County NC!
Asheboro, NC / Randolph County**

SUMMARY

Address

Off of Sunset Dr. N

City, State Zip

Asheboro, NC 27205

County

Randolph County

Type

Hunting Land, Recreational Land, Lot

Latitude / Longitude

35.7097 / -79.8397

Acreage

29.86

Price

\$268,740

Property Website

<https://www.mossyoakproperties.com/property/29-86-acres-of-recreational-land-for-sale-in-randolph-county-nc-/randolph/north-carolina/104003/>



29.86 acres of Recreational Land for Sale in Randolph County NC! Asheboro, NC / Randolph County

PROPERTY DESCRIPTION

29.86 Acre Recreational Property - Hunting and Hiking - Conservation Easement with Homesite Allowed!

Escape the noise and find your sanctuary on this stunning 29.86-acre property just outside the Asheboro city limits. Located in the peaceful hills of Randolph County, this land offers a rare chance to own a private nature preserve while still being close to town.

The land is protected by a conservation easement, making it a dream come true for someone who loves the environment and wants to keep the forest beautiful forever. While the trees are protected, the easement specifically allows you to clear a one-acre homesite to build your dream house.

The Property: A Natural Sanctuary

This land is more than just a homesite; it is a protected forest. Under a conservation easement, the massive hardwood trees will stand for generations.

The Homesite: You are permitted a one-acre area to build your custom home.

Water & Rock formations: Cedar Fork Creek flows along the western boundary, and various sized boulders are scattered across the hillside.

Wildlife: It is a natural home for whitetail deer and small game, perfect for quiet observation or hunting.

Convenience: A utility easement ensures city water and sewer are available, and a gate at the entrance provides immediate privacy.

Park-Like Atmosphere: The combination of the creek, the Boulder-strewn hillside, and the deep woods creates a peaceful feeling across the entire acreage.

The property is currently just outside of the Asheboro city limits and can have either water or sewer available from the city of Asheboro to it from Sunset Drive. In order to have both water and sewer available, the property will have to be annexed into the Asheboro city limits.

Local History & Small-Town Charm

Asheboro was founded in 1796 and named after Governor Samuel Ashe. Once a hub for railroads and textiles, the city has transformed into a vibrant community known for its "Great Main Street."

Historic Downtown: Recently added to the National Register of Historic Places, downtown offers locally owned shops, the historic Sunset Theatre (built in 1929), and Bicentennial Park.

Deep Roots: Explore the Randolph County Heritage Museum or see NASCAR history at the Richard Petty Museum in nearby Randleman.

<https://www.asheboronc.gov/>

Nearby Attractions

Living here means you are minutes away from world-class destinations:

North Carolina Zoo: The world's largest natural-habitat zoo is practically in your backyard. https://www.nczoo.org/?gad_source=1&gad_campaignid=23540559517&gbraid=0AAAABBswmhZWTBP6IEd8gtvBGfPXbVIZp&gclid=CjwKCAjwhqfPBhBWEiwAZo19-BC2QH5Qfr5Yb4MjVHKrVhxoCfHIQAvD_BwE

Seagrove Pottery: Known as the "Pottery Capital of the World," this historic craft community is just 20 minutes south. <https://www.heartofnorthcarolina.com/things-to-do/seagrove-pottery/>



Outdoor Adventure: Hike the Birkhead Mountain Wilderness in the Uwharrie National Forest or explore the Deep River State Trail. <https://www.fs.usda.gov/r08/northcarolina/recreation/uwharrie-national-forest-0>

Center of the State

Asheboro is known as the geographic center of North Carolina, making it incredibly convenient for travel to the major cities of the Piedmont Triad:

High Point: ~25 minutes (20 miles)

Greensboro: ~30 minutes (27 miles)

Lexington: ~35 minutes (28 miles)

Winston-Salem: ~45 minutes (40 miles)

Charlotte: ~1.5 hours (71 miles)

Raleigh: ~1.5 hours (75 miles)

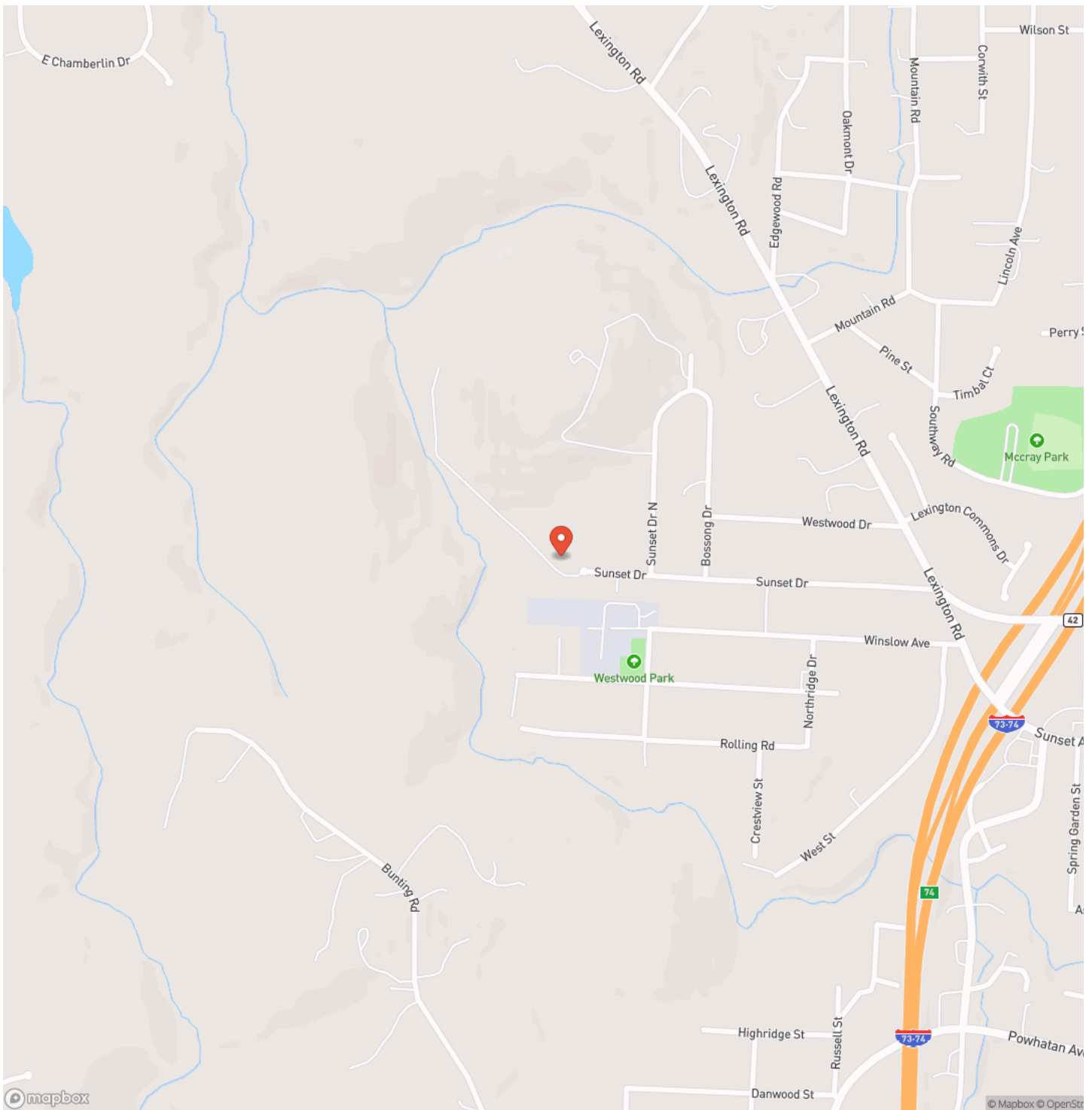
For more information on this and other land for sale in Randolph County, contact Jimmy Underwood at [980-734-8065](tel:980-734-8065) or by email at jimmyunderwood@mossyoakproperties.com, or visit www.landandfarmsrealty.com.



29.86 acres of Recreational Land for Sale in Randolph County NC!
Asheboro, NC / Randolph County

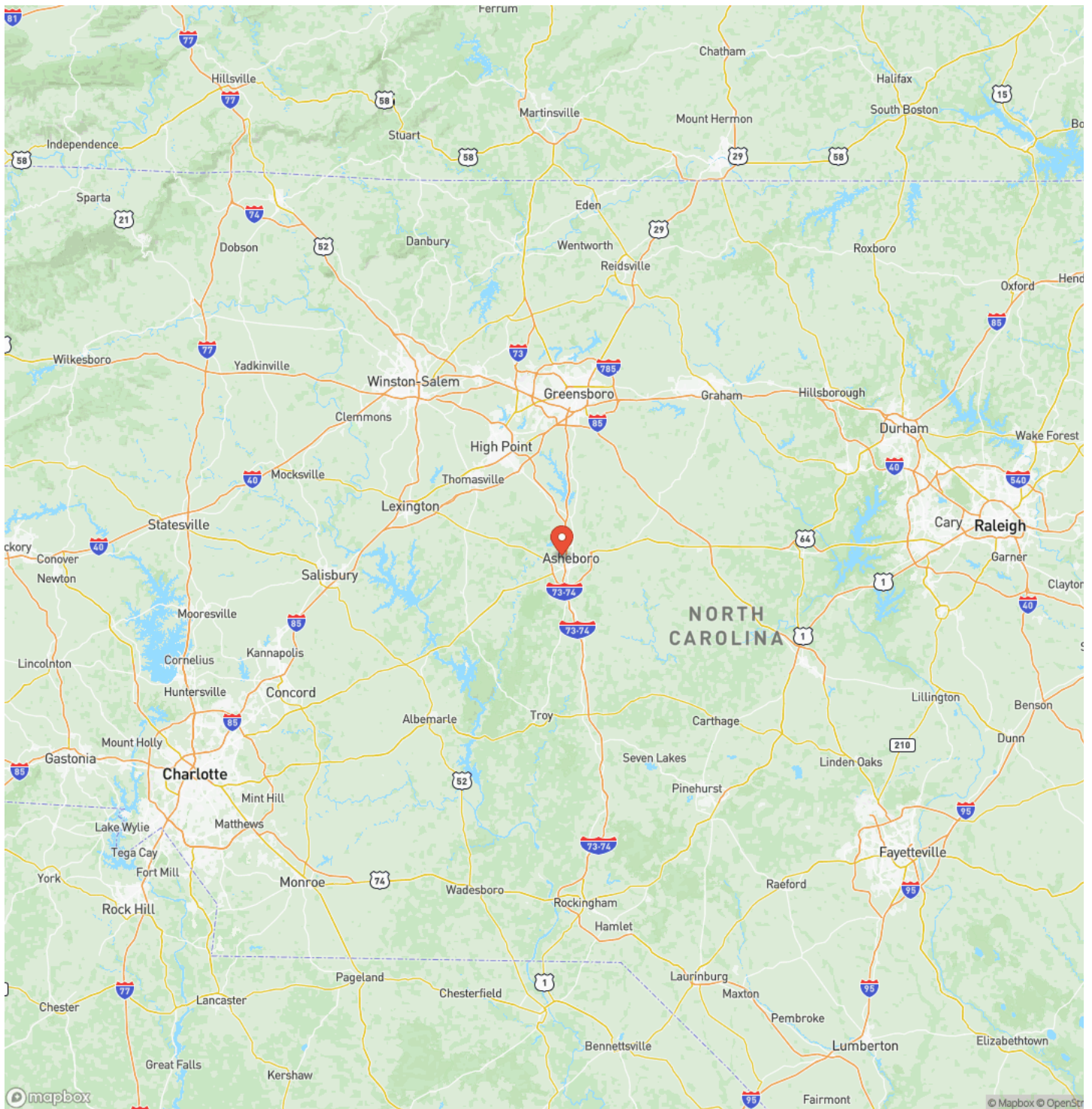


Locator Map

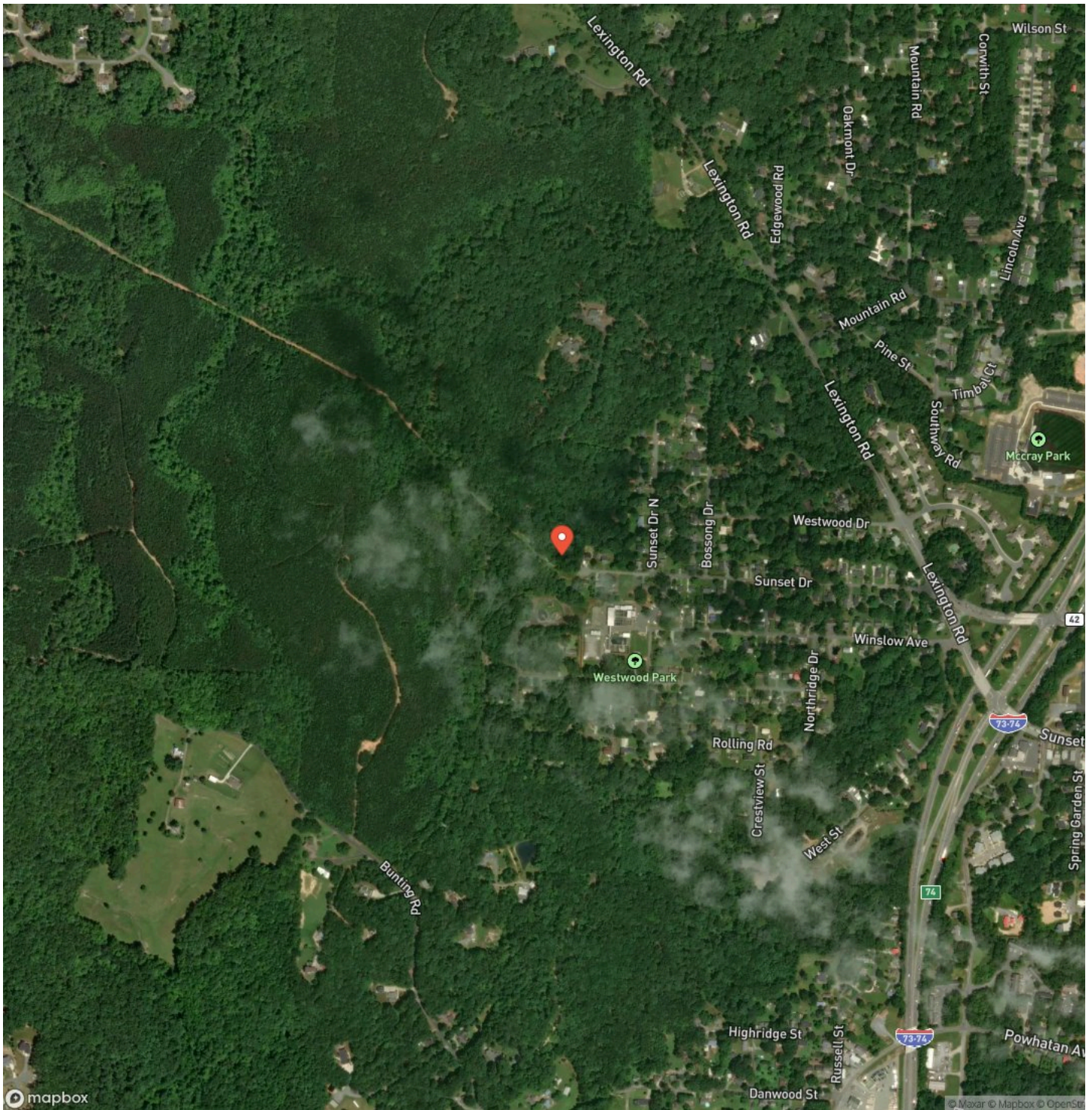


29.86 acres of Recreational Land for Sale in Randolph County NC!
Asheboro, NC / Randolph County

Locator Map



Satellite Map



DISCLAIMERS

Information in this brochure is provided solely for information purposes and does not constitute an offer to sell or advertise real estate outside the states in which broker or agent licensed. The information presented has been obtained from sources deemed to be reliable, but is not guaranteed or warranted by the agent, broker, or the sellers of these properties. This offering is subject to errors, omissions, prior sale, price change, correction or withdrawal from the market without notice. All references to age, square footage, income, expenses, acreage, carrying capacity, and land classification, etc. are approximate. Prospective buyers are chargeable with and expected to conduct their own independent investigation of the information and the property and to rely only on those results. Sellers reserve the right to accept or reject any and all offers without liability to any buyer or cooperating broker.

Maps are provided for illustration purposes only, the accuracy is not warranted. Parcels on interactive maps are not adjusted to match aerial backgrounds. This information is for reference purposes only and is not a legal document. Data maps contain errors. The seller and seller's agent are making known to all potential buyers that there may be variations between the location of the existing fence lines and the legal description of the deeded property. Seller and seller's agent make no warranties with regard to the location of the fence lines in relationship to the deeded property lines, nor does the Seller make any warranties or representations with regard to the specific acreage contained within the fenced property lines. Seller is selling the property in an "as is" condition, which includes the location of the fences as they exist. Boundaries shown on the accompanying maps are approximate, based on county parcel data. The maps are not to scale. The accuracy of the maps is not guaranteed. Prospective buyers are encouraged to verify fence lines, deeded property lines and acreages using a licensed surveyor at their own expense.



Mossy Oak Properties Land and Farms Realty
101 Budleigh Street, Suite F
Manteo, NC 27954
(844) 480-5263
<https://www.mossoakproperties.com/>

