

1101 CORN TASSEL TR
MARTINSVILLE, VIRGINIA



\$687,999

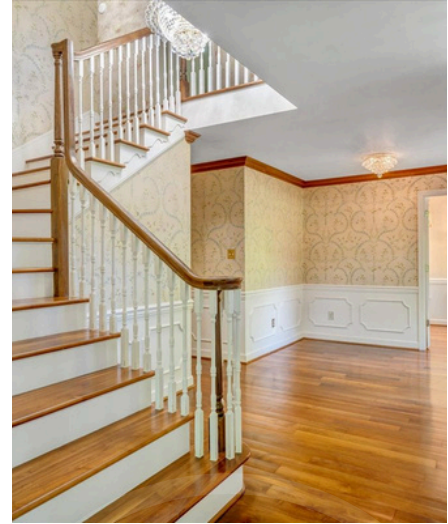


See Corn Tassel

FOREST PARK GOLF & GAME ONE-OF-A-KIND SPORTING ESTATE ON THE GOLF COURSE

Some properties check a box or two – this one checks every box on your list and then some. Tucked away on 14± lush, private acres in Martinsville, Virginia, this magnificent 5,200 square foot estate offers 4 bedrooms, 3 full bathrooms, and 2 half bathrooms wrapped in the kind of solid, time-honored craftsmanship built in 1968 that modern construction simply can't replicate – featuring a gourmet kitchen with custom cabinetry, expansive back deck and patio, and a 2-car attached garage. Step outside and the lifestyle only gets better: the property sits directly on the Forest Park Country Club golf course, placing one of Martinsville's most popular golfing destinations literally at your back door, while an on-site private tennis court delivers on-demand recreation with no reservations required.

- ✓ 4BD/3.2BA
- ✓ 14+/- ACRES
- ✓ COUNTRY CLUB HOME
- ✓ PRIVATE TENNIS COURT
- ✓ 2-CAR GARAGE



1101 CORN TASSEL TR
MARTINSVILLE, VIRGINIA



Fourteen rolling acres of prime Virginia countryside provide exceptional urban archery hunting for whitetail deer, turkey, and small game, and just minutes down the road, Lake Lanier offers peaceful fishing and boating for the water enthusiast. Add in close proximity to the legendary Martinsville Speedway and the genuine charm of small-town Virginia living, and you have a property that simply cannot be replicated – one where every single day offers a round of golf, a morning hunt, a set of tennis, or an afternoon on the lake. Properties this rare don't wait.



Matt Muehleck

276.340.8538 | matt@landandluxury.com

MattMuehleck.LandAndLuxury.com