

840 BENT SCHOOL RD  
MEADOWS OF DAN, VIRGINIA



**\$912,000**

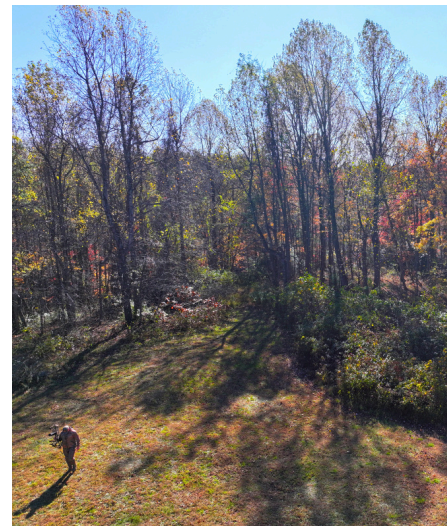


See 840 Bent School

## SKYVIEW ESTATE CUSTOM HOME ON 16+/- MOUNTAIN ACRES

Tucked at the end of a quiet, state-maintained gravel road, this custom-built 4+BR/4.1BA contemporary home features 4,400+ sq. ft. of finished space on 16+/- private acres just minutes from the Blue Ridge Parkway and Primland Resort, offering the ultimate in luxury mountain living. The home showcases high-end craftsmanship with arched doorways, barrel ceilings, granite countertops, built-ins, and expansive windows framing expansive mountain views. The gourmet kitchen includes granite surfaces, double wall ovens, a large island, and a walk-in pantry, flowing into a keeping room with rustic beams and a Jotul wood stove. The adjoining butler's pantry connects to the formal dining room for seamless entertaining. Outdoor living is exceptional with 2 covered porches, an outdoor fireplace, outdoor sink, and mounted TV overlooking an in-ground pool.

- ✓ 4+BD/4.1BT HOME
- ✓ MATURE HARDWOOD
- ✓ SECLUDED
- ✓ NEAR BLUE RIDGE PKWY
- ✓ RENTAL POTENTIAL



# 840 BENT SCHOOL RD MEADOWS OF DAN, VIRGINIA



The primary suite offers vaulted ceilings, a private patio, dual vanities, a Kohler soaking tub, and a rain shower. A nearby nursery or office and a private in-law/guest suite add flexibility. Upstairs are 3 additional bedrooms, 2 full baths, and walk-in attic storage. The property also includes a detached 2-car garage, greenhouse, fenced garden area with solar-powered electric fencing, and 2 powered sheds, creating the perfect setup for homesteading or a hobby garden. Enjoy open pasture, wooded acreage, abundant wildlife, and an RV hookup. Systems include a zoned HVAC, Generac generator, and wood-burning furnace capable of heating the entire home. Experience refined mountain living with unmatched privacy, craftsmanship, and breathtaking Blue Ridge views, only minutes from premier dining, golf, and outdoor recreation at Primland Resort.



**Justin Rolfe | Matt Muehleck**      540.299.7238 | [virginia@landandluxury.com](mailto:virginia@landandluxury.com)

[MattMuehleck.LandAndLuxury.com](http://MattMuehleck.LandAndLuxury.com)

[JustinRolfe.LandAndLuxury.com](http://JustinRolfe.LandAndLuxury.com)