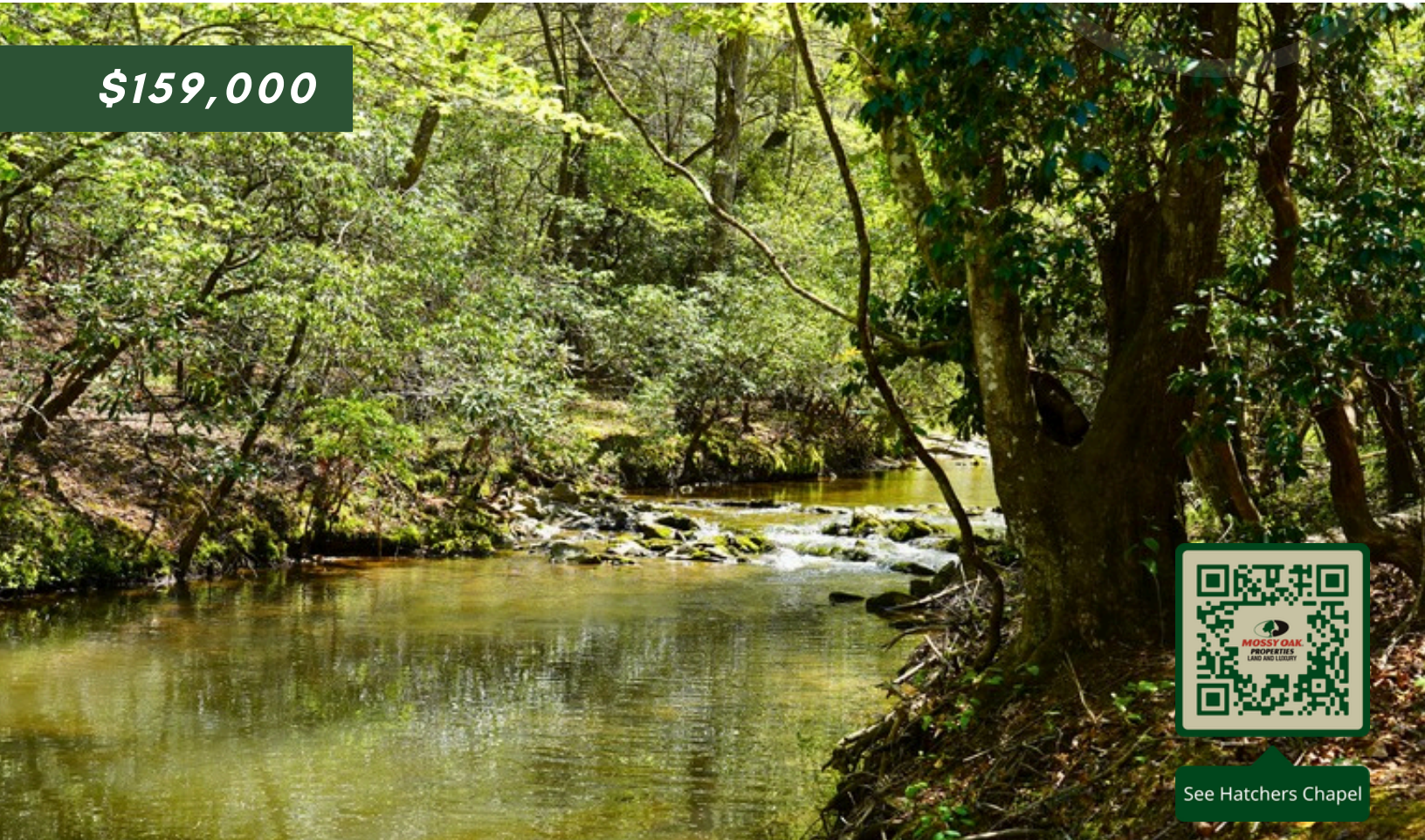


TBD HATCHERS CHAPEL RD

WESTFIELD, NORTH CAROLINA



\$159,000



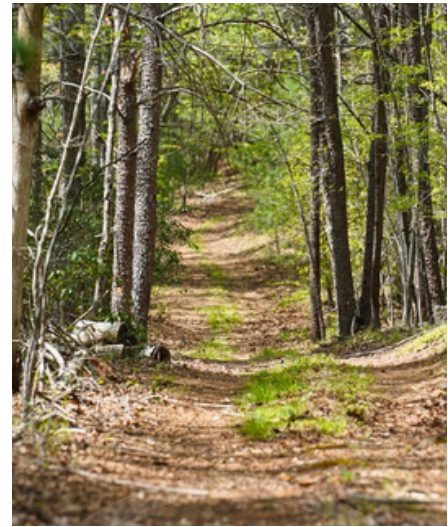
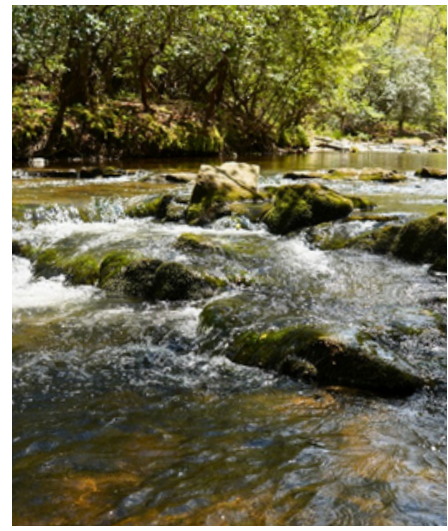
See Hatchers Chapel

ANGLER'S BEND

13.5+/- CREEKSIDE ACRES IN YADKIN VALLEY WINE REGION

Tucked away in the scenic foothills of North Carolina's Blue Ridge Mountains, this 13.5+/- acre tract offers bold creekfront land at the northeastern tip of Surry County, NC, right where it connects with Stokes County, NC and Patrick County, VA. The defining feature of this property is its frontage on Archies Creek, which flows for more than a quarter-mile along the eastern, southern, and western boundaries. The creek winds through the landscape with exposed rock features and a natural sandbar, creating a setting that feels more like a private park than a typical land tract. Whether you envision spending your days relaxing in a chair with your feet in the water, setting up a hammock and swinging along the banks, or building a small fishing retreat, the opportunity along the creek is exceptional. Anglers will appreciate the proven waters, with rainbow trout, brown trout, and smallmouth bass all caught right from the property. The land itself is entirely wooded, offering the kind of seclusion perfect for both recreational use and future residential opportunities.

- ✓ CREEK FRONTAGE
- ✓ SECLUDED
- ✓ GREAT LOCATION
- ✓ NEAR DAN RIVER
- ✓ POT'L BUILD SITES



TBD HATCHERS CHAPEL RD WESTFIELD, NORTH CAROLINA



An elevated ridgetop surrounded by the creek offers the ideal spot for a cabin or full-time residence. From this vantage point, you can enjoy views into the towering hardwoods while listening to the steady flow of water below. The timber mix includes oak, poplar, pine, holly, & rhododendron, contributing to the property's natural beauty & privacy. Wildlife is abundant throughout the tract, with well-defined deer trails crossing the creek & strong signs of turkey activity. This makes the property well-suited for hunting, while the diverse terrain also supports hiking, camping, & year-round enjoyment. For more recreation, the nearby Dan River boat ramp is just over 5 min away, providing additional opportunities for fishing & floating along one of the region's most popular rivers. Despite its private feel, the property remains conveniently located to towns in both NC & VA, giving you quick access to amenities.



Justin Rolfe | 540.299.7238 jrolfe@landandluxury.com