

363 CENTER CHURCH RD

HIDDENITE, NC | ALEXANDER COUNTY



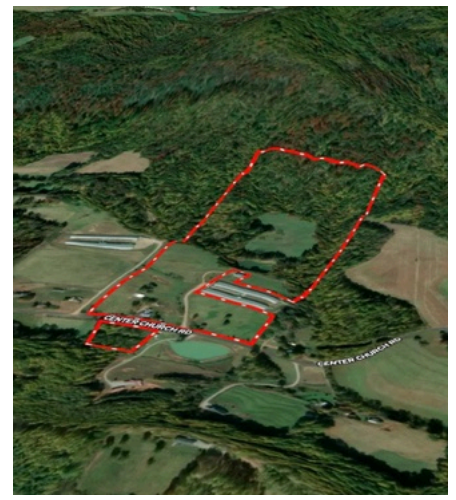
\$489,000

52± ACRE HIDDENITE FARM

PRIVATE POND, PASTURE, & CREEK

Discover 52 ± acres of beautiful countryside in the scenic Hiddenite community of Alexander County. This unique property features rolling pastures, mature woodlands, a creek, and a large private pond that creates a peaceful setting for recreation, farming, or building your dream rural retreat. The land offers plenty of room to explore with partially fenced pasture, a barn, and abundant small and large game. With property located on both sides of the paved road, there are multiple possibilities for use, access, and future plans.

- ✓ 52.15 +/- ACRES
- ✓ PRIVATE POND
- ✓ BIG & SMALL GAME
- ✓ MOUNTAIN VIEWS
- ✓ ENDLESS POSSIBILITIES



363 CENTER CHURCH RD

HIDDENITE, NC | ALEXANDER COUNTY



A historic 1916 farmhouse sits on the property, remodeled in 1956 with additional improvements made in 2016. Updates include a rebuilt and reinforced crawl space, septic system, metal roof, windows, heat pump, vinyl siding, electrical, plumbing, and county water. Whether you're looking for hunting land, a working farm, or a private country getaway, this Alexander County property offers the space, scenery, and potential to make it your own!



Ted Coffey | 704-400-1033 | tedc@landandluxury.com