

1413 OLD COLUMBIA RD
CHESTER, SOUTH CAROLINA



\$187,500

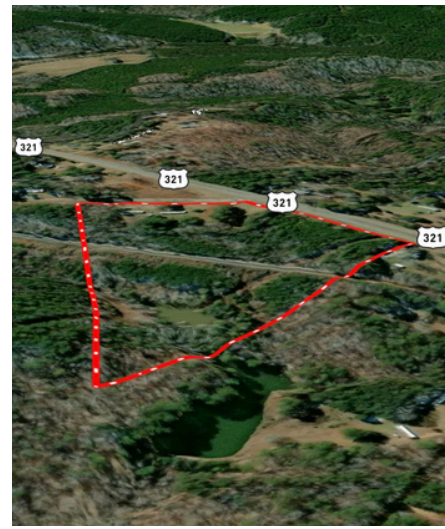


OLD COLUMBIA ROAD POND & HOMESITE OPPORTUNITY

13.6 +/- ACRES IN CHESTER COUNTY

Discover the potential of this nearly 14 acre property ideally located just 3 miles from the City of Chester. Situated at the corner of Highway 321 (Columbia Highway) and Old Columbia Highway, this tract offers more than 1,050 feet of road frontage, providing outstanding accessibility and flexibility for a variety of future uses. A scenic pond enhances the property's appeal, offering opportunities for fishing, wildlife viewing, and outdoor enjoyment while adding a rare recreational feature to the landscape.

- ✓ 13.6 +/- ACRES
- ✓ SCENIC POND
- ✓ PRIME LOCATION
- ✓ 1,050+ FT ROAD FRONTAGE
- ✓ DEVELOPMENT POTENTIAL



1413 OLD COLUMBIA RD

CHESTER, SOUTH CAROLINA



With ample space and multiple possibilities, this property is well-suited for a private estate, family compound, investment opportunity, or future residential development. Conveniently located approximately 10 miles from I-77, it provides easy access to both Charlotte and Columbia, each about an hour away. The property's proximity to the new Scout Motors manufacturing facility further strengthens its long-term growth potential, making it an attractive option for buyers seeking a blend of location, versatility, and natural beauty.

Lee Whitley | 704-506-3274 | leew@landandluxury.com

