

2351 REGES STORE ROAD

NASHVILLE, NORTH CAROLINA



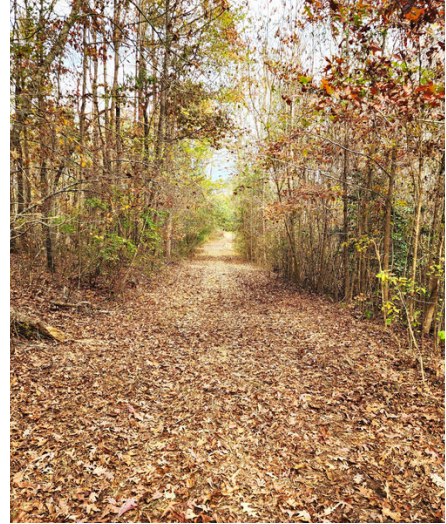
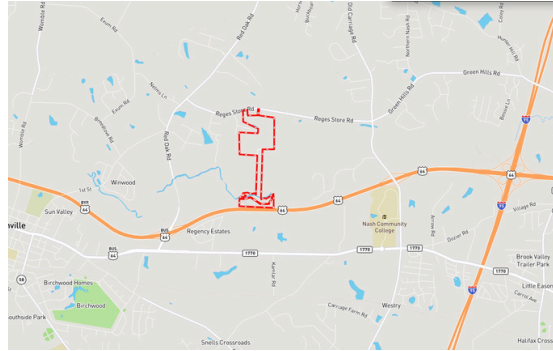
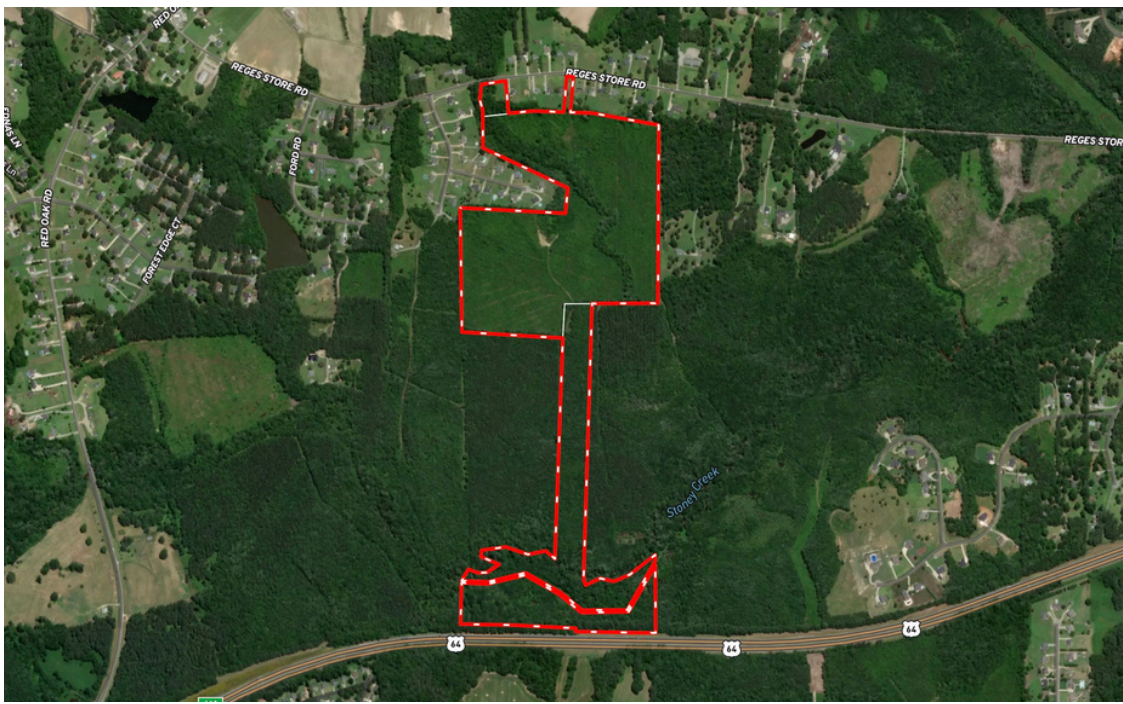
\$1,400,000



PRIME DEVELOPMENT OPPORTUNITY: 104 +/- ACRES IN NASH COUNTY, NC

Discover this exceptional 104+/- acre development property, ideally situated just minutes from Nash Community College and I-95. This expansive assemblage consists of four parcels, stretching nearly a mile from Reges Store Road to Highway 64. With a prime location and potential for residential development, the property offers access to essential utilities. Sewer connection is available with annexation, and a county water line is currently under construction.

- ✓ 104 +/- ACRES
- ✓ R-20 ZONING
- ✓ PRIME LOCATION
- ✓ DEVELOPMENT POTENTIAL
- ✓ ACCESS TO ESSENTIAL UTILITIES



2351 REGES STORE ROAD

NASHVILLE, NORTH CAROLINA



A scenic stream winds through the property, leading to floodplain and wetland areas, with approximately half of the land suitable for development. The listed address has not been assigned and is for location reference only. Conveniently located just outside the Nashville city limits, this property is less than five minutes from I-95, 45 minutes from Raleigh, less than 2 hours to Richmond and just 2.5 hours from the North Carolina coast. Don't miss this prime investment opportunity in a rapidly growing area!

Lee Whitley | 704-506-3274
leew@landandluxury.com

