

Bear Paw Valley 70 Acres
Bear Paw Road
Regina, NM 87046

\$485,000
70.700± Acres
Sandoval County



Bear Paw Valley 70 Acres
Regina, NM / Sandoval County

SUMMARY

Address

Bear Paw Road

City, State Zip

Regina, NM 87046

County

Sandoval County

Type

Hunting Land, Ranches, Recreational Land, Undeveloped Land,
Horse Property

Latitude / Longitude

36.187562 / -106.944502

Acreage

70.700

Price

\$485,000

Property Website

<https://www.mossyoakproperties.com/property/bear-paw-valley-70-acres-sandoval-new-mexico/84412/>



Bear Paw Valley 70 Acres Regina, NM / Sandoval County

PROPERTY DESCRIPTION

Bear Paw Valley Farm/Ranch – 70+ Acres with Water, Wildlife, and Views

Tucked away in the scenic opening of Bear Paw Valley just north of Regina, NM, this exceptional 70+ acre property offers privacy, natural beauty, and incredible potential. Spread across five individual parcels (available together or separately), the land features a mix of gently sloping meadows and wooded piñon and juniper covered hills.

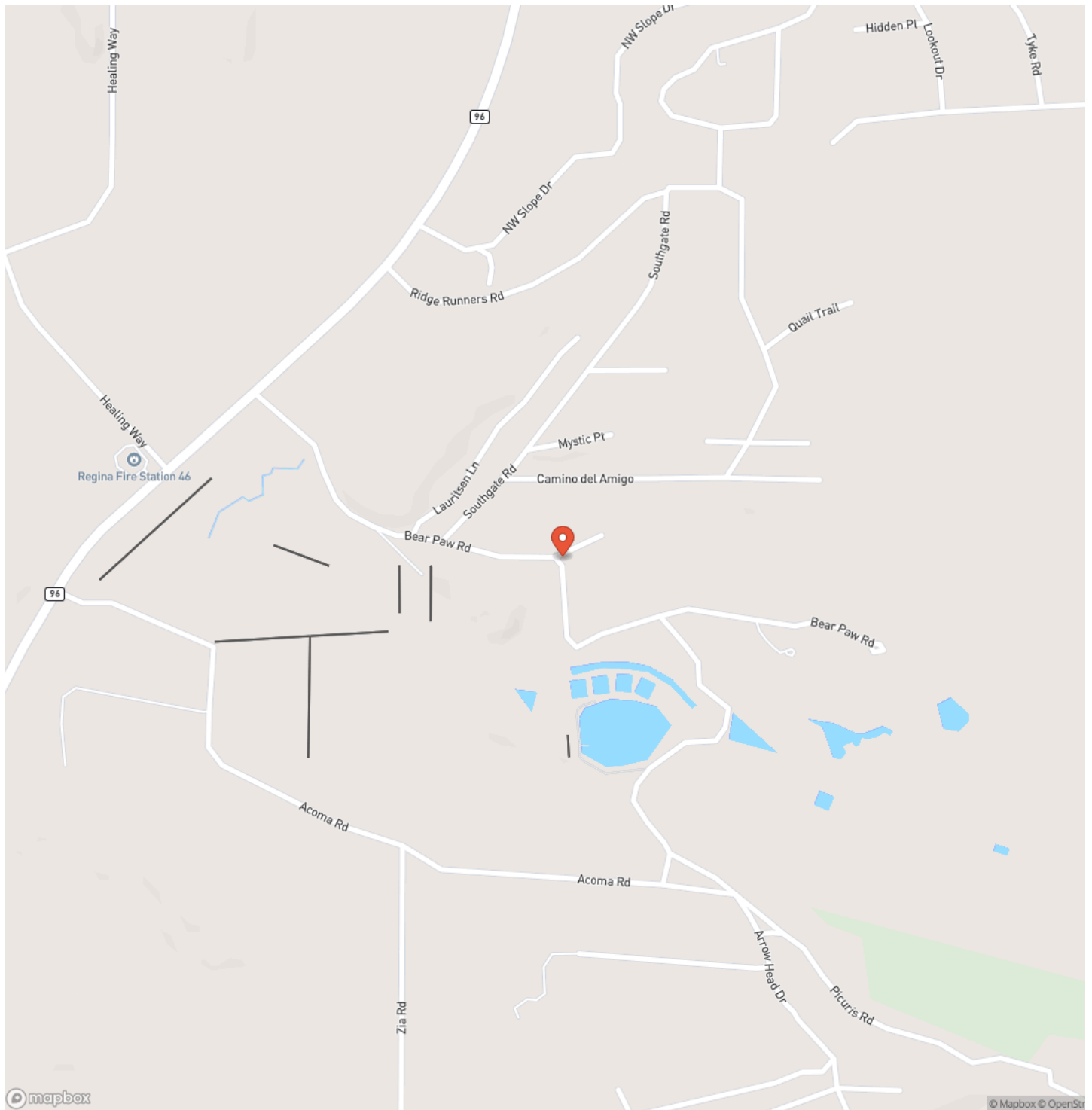
Two seasonal ponds and sub-irrigated ground enhance the land's versatility, making it ideal for horses, a few head of cattle, or a private farmstead. A building pad is already in place with electricity on-site, offering a head start for your dream home or cabin. The property lies within NM Game Management Unit 6A and is eligible for E-Plus, making it a prime location for hunting and wildlife observation. Frequent visitors include elk, mule deer, black bear, wild turkeys, foxes, quail, and dove.

Whether you're seeking a private getaway, a future development opportunity, or a stunning equestrian or recreational property, this hidden treasure in Bear Paw Valley is a rare find. No known irrigation rights. Seller may consider offers on individual parcels ranging from 10 to 25 acres. Just minutes from Regina and surrounded by the natural beauty of northern New Mexico.

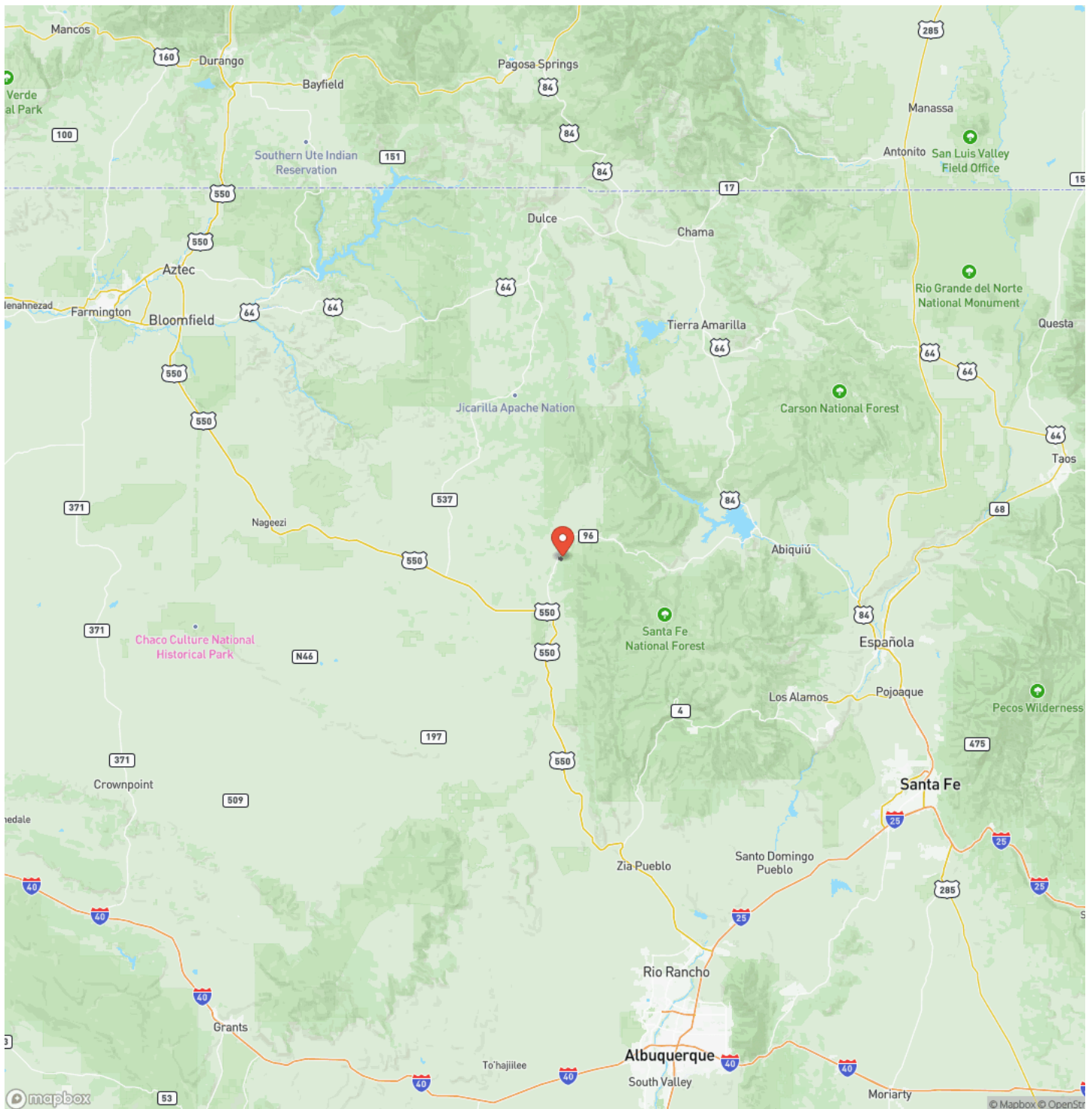
Bear Paw Valley 70 Acres
Regina, NM / Sandoval County



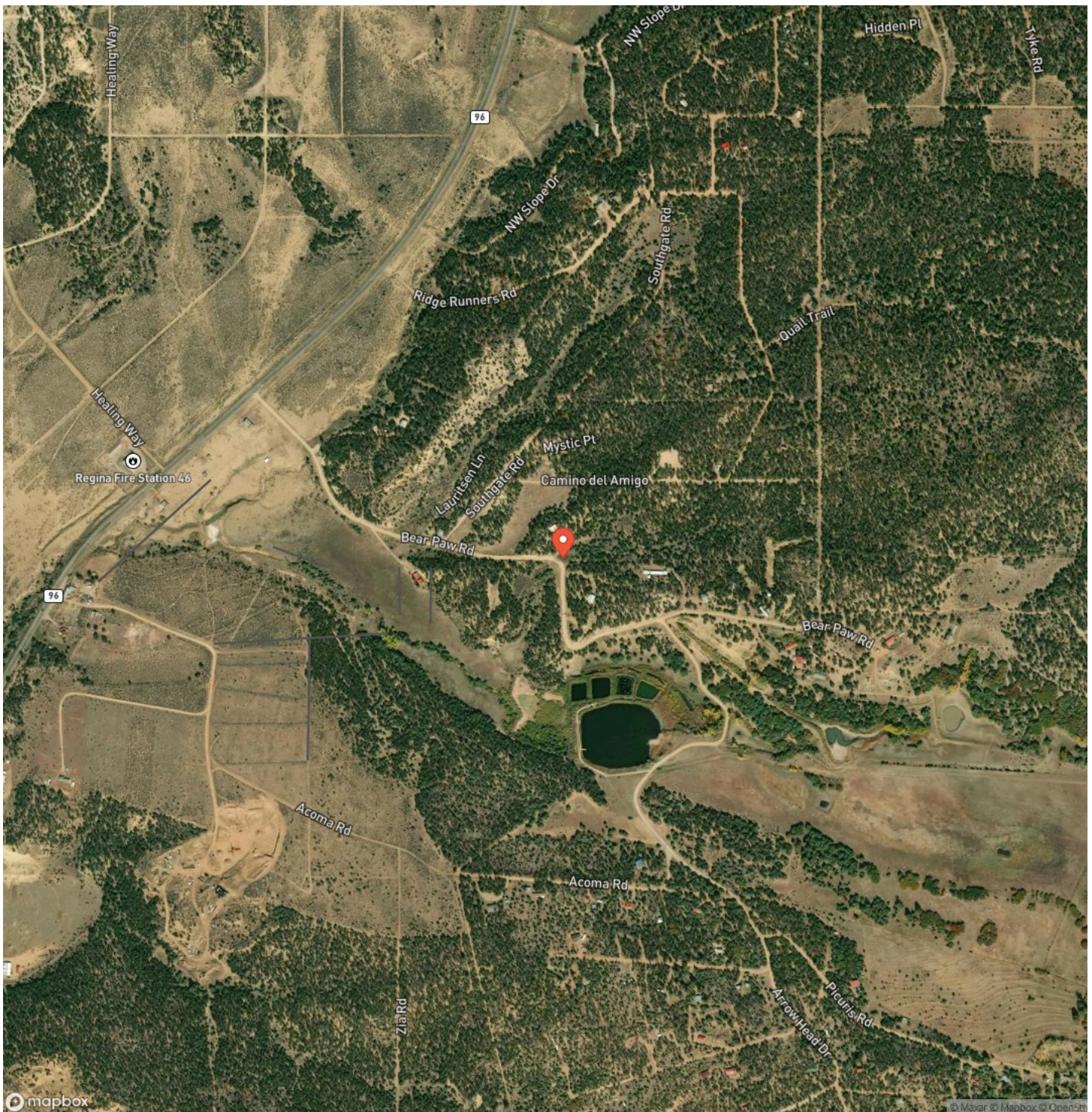
Locator Map



Locator Map



Satellite Map



Bear Paw Valley 70 Acres
Regina, NM / Sandoval County

LISTING REPRESENTATIVE

For more information contact:



Representative

Casey Spradley

Mobile

(505) 860-2061

Office

(505) 886-3463

Email

cspradley@mossyoakproperties.com

Address

809 First Street Suite C

City / State / Zip

NOTES

[illegible]

[illegible]

<https://www.mossyoakproperties.com/office/mossy-oak-properties-enchanted-land/>

DISCLAIMERS

Information in this brochure is provided solely for information purposes and does not constitute an offer to sell or advertise real estate outside the states in which broker or agent licensed. The information presented has been obtained from sources deemed to be reliable, but is not guaranteed or warranted by the agent, broker, or the sellers of these properties. This offering is subject to errors, omissions, prior sale, price change, correction or withdrawal from the market without notice. All references to age, square footage, income, expenses, acreage, carrying capacity, and land classification, etc. are approximate. Prospective buyers are chargeable with and expected to conduct their own independent investigation of the information and the property and to rely only on those results. Sellers reserve the right to accept or reject any and all offers without liability to any buyer or cooperating broker.

Maps are provided for illustration purposes only, the accuracy is not warranted. Parcels on interactive maps are not adjusted to match aerial backgrounds. This information is for reference purposes only and is not a legal document. Data maps contain errors. The seller and seller's agent are making known to all potential buyers that there may be variations between the location of the existing fence lines and the legal description of the deeded property. Seller and seller's agent make no warranties with regard to the location of the fence lines in relationship to the deeded property lines, nor does the Seller make any warranties or representations with regard to the specific acreage contained within the fenced property lines. Seller is selling the property in an "as is" condition, which includes the location of the fences as they exist. Boundaries shown on the accompanying maps are approximate, based on county parcel data. The maps are not to scale. The accuracy of the maps is not guaranteed. Prospective buyers are encouraged to verify fence lines, deeded property lines and acreages using a licensed surveyor at their own expense.

Mossy Oak Properties Enchanted Ranch Land and Home

809 First Street Suite C

Moriarty, NM 87035

(505) 886-3463

<https://www.mossyoakproperties.com/office/mossy-oak-properties-enchanted-land/>

