

Beautiful 19 Acres Cuba
County Rd 11
Cuba, NM 87013

\$70,000
19.02± Acres
Sandoval County



Beautiful 19 Acres Cuba
Cuba, NM / Sandoval County

SUMMARY

Address

County Rd 11

City, State Zip

Cuba, NM 87013

County

Sandoval County

Type

Undeveloped Land

Latitude / Longitude

35.93645 / -106.94705

Acreage

19.02

Price

\$70,000



Beautiful 19 Acres Cuba
Cuba, NM / Sandoval County

PROPERTY DESCRIPTION

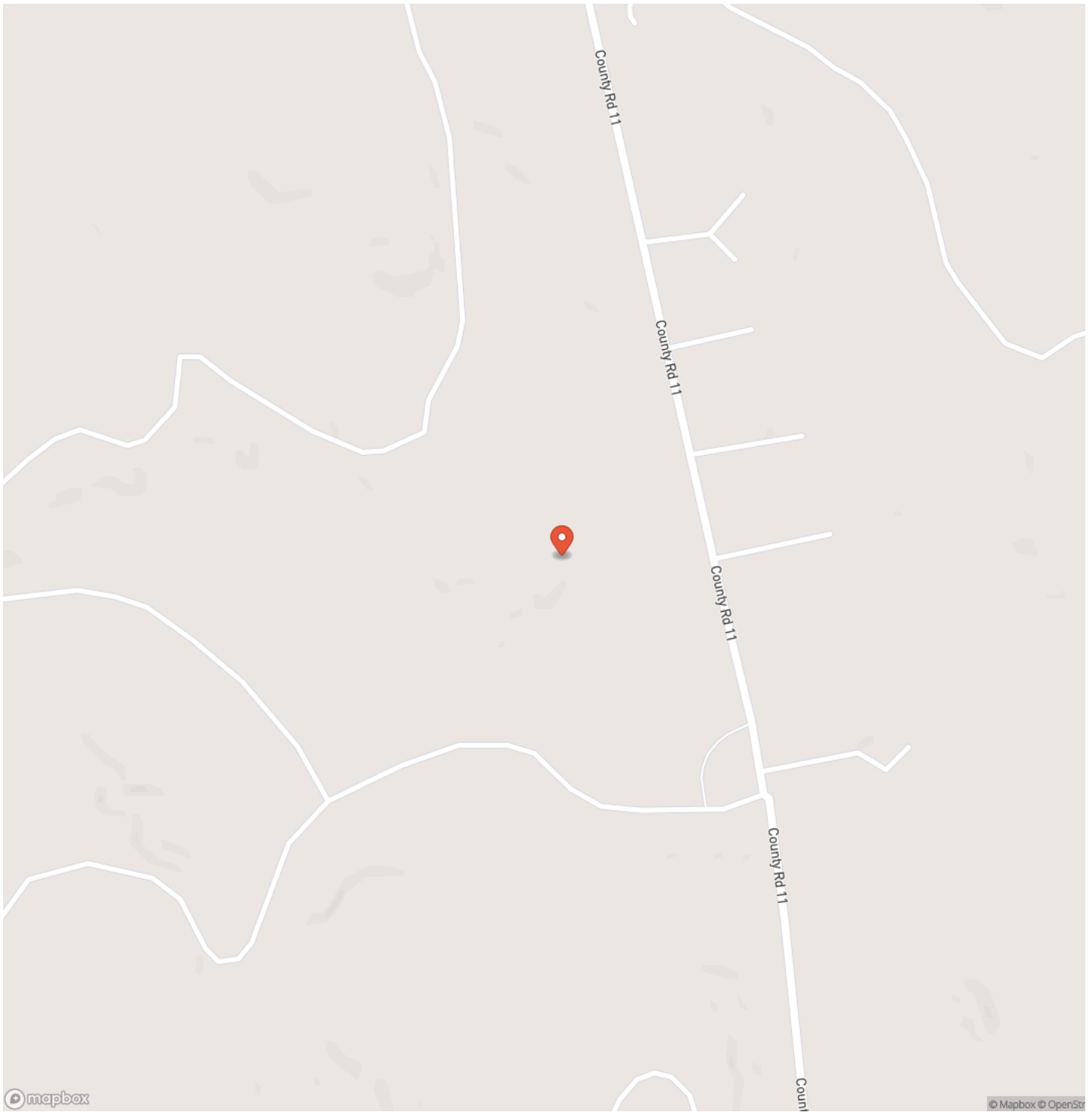
Beautiful 19-acre property just 10 minutes south of Cuba on the old Highway 44, also known as county road 11. Views of the Jemez Mountains and Cabezon. Varied terrain. Partially fenced and borders a small piece of BLM. Road easement on the north boundary and Utility easement on the south.



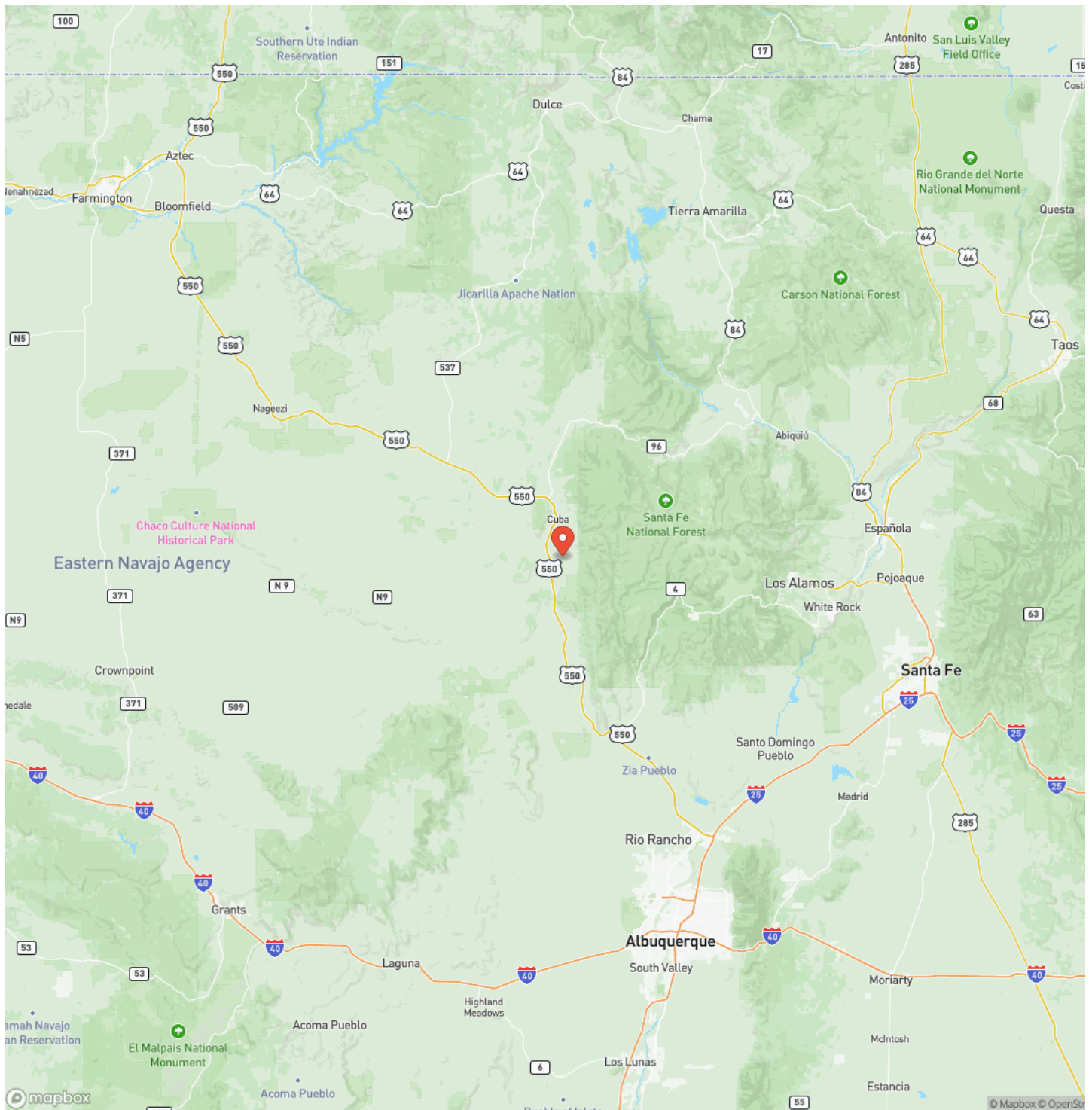
Beautiful 19 Acres Cuba
Cuba, NM / Sandoval County



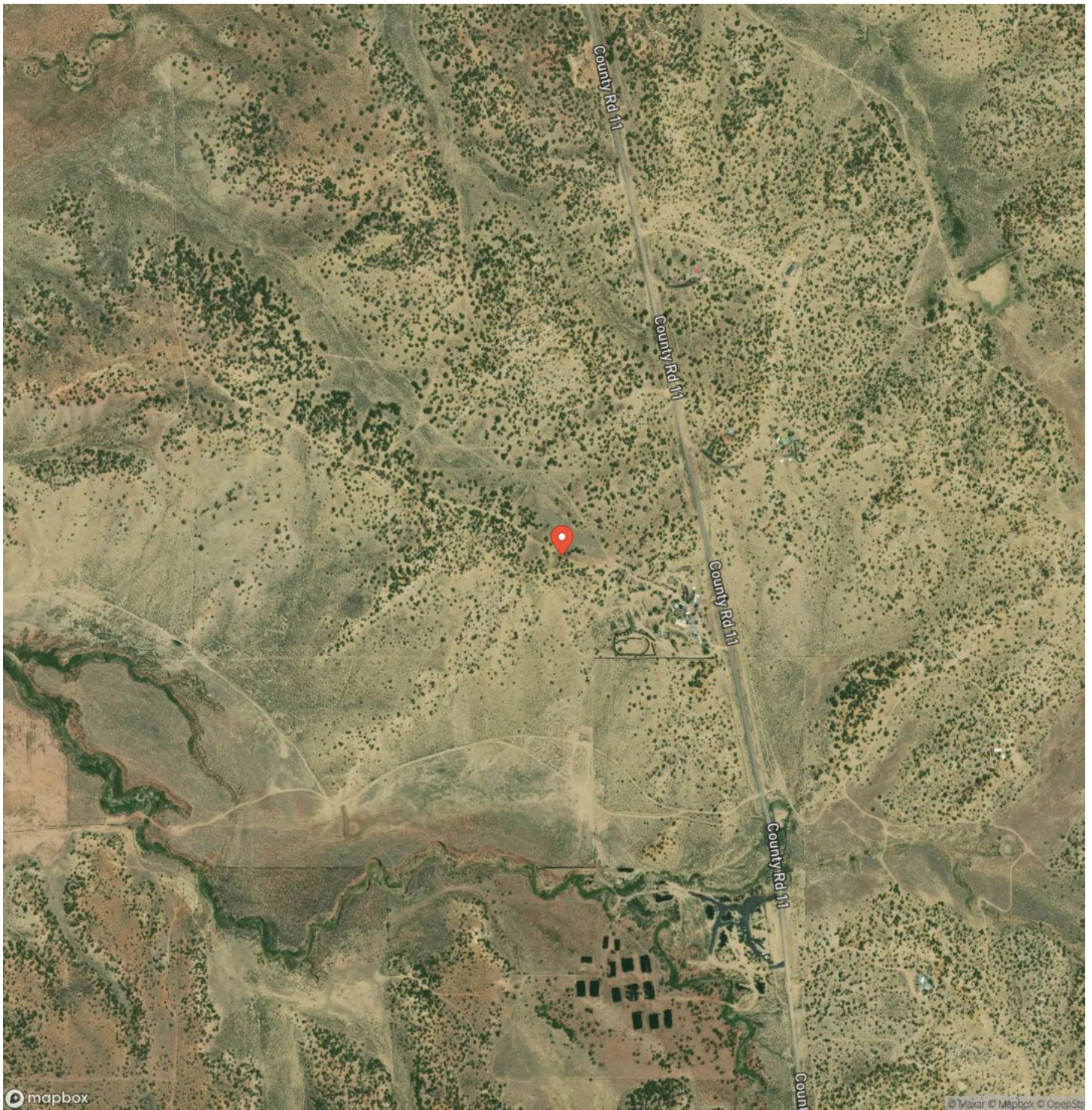
Locator Map



Locator Map



Satellite Map



DISCLAIMERS

Information in this brochure is provided solely for information purposes and does not constitute an offer to sell or advertise real estate outside the states in which broker or agent licensed. The information presented has been obtained from sources deemed to be reliable, but is not guaranteed or warranted by the agent, broker, or the sellers of these properties. This offering is subject to errors, omissions, prior sale, price change, correction or withdrawal from the market without notice. All references to age, square footage, income, expenses, acreage, carrying capacity, and land classification, etc. are approximate. Prospective buyers are chargeable with and expected to conduct their own independent investigation of the information and the property and to rely only on those results. Sellers reserve the right to accept or reject any and all offers without liability to any buyer or cooperating broker.

Maps are provided for illustration purposes only, the accuracy is not warranted. Parcels on interactive maps are not adjusted to match aerial backgrounds. This information is for reference purposes only and is not a legal document. Data maps contain errors. The seller and seller's agent are making known to all potential buyers that there may be variations between the location of the existing fence lines and the legal description of the deeded property. Seller and seller's agent make no warranties with regard to the location of the fence lines in relationship to the deeded property lines, nor does the Seller make any warranties or representations with regard to the specific acreage contained within the fenced property lines. Seller is selling the property in an "as is" condition, which includes the location of the fences as they exist. Boundaries shown on the accompanying maps are approximate, based on county parcel data. The maps are not to scale. The accuracy of the maps is not guaranteed. Prospective buyers are encouraged to verify fence lines, deeded property lines and acreages using a licensed surveyor at their own expense.



Mossy Oak Properties Enchanted Ranch Land and Home

809 First Street Suite C

Moriarty, NM 87035

(505) 886-3463

<https://www.mossyoakproperties.com/office/mossy-oak-properties-enchanted-land/>

